



MATTER SERIES

**Presentation
Will Begin
Shortly**

tech **talks** UPCOMING SESSIONS

FEB 9TH | Matter: Evaluation to Certification

MAR 9TH | Certifying a Matter Device: Thread and Wi-Fi

APR 6TH | Getting Started: Matter Over Wi-Fi

MAY 4TH | Start Your Matter Development Journey

JUN 1ST | What's New in Matter?

We will begin in:

0:00



MATTER SERIES

tech **talks** UPCOMING SESSIONS

FEB 9TH | Matter: Evaluation to Certification

MAR 9TH | Certifying a Matter Device: Thread and Wi-Fi

APR 6TH | Getting Started: Matter Over Wi-Fi

MAY 4TH | Start Your Matter Development Journey

JUN 1ST | What's New in Matter?

2023



WEBINAR SERIES

Welcome

Certifying a Matter Device: Thread and Wi-Fi

Rob Alexander



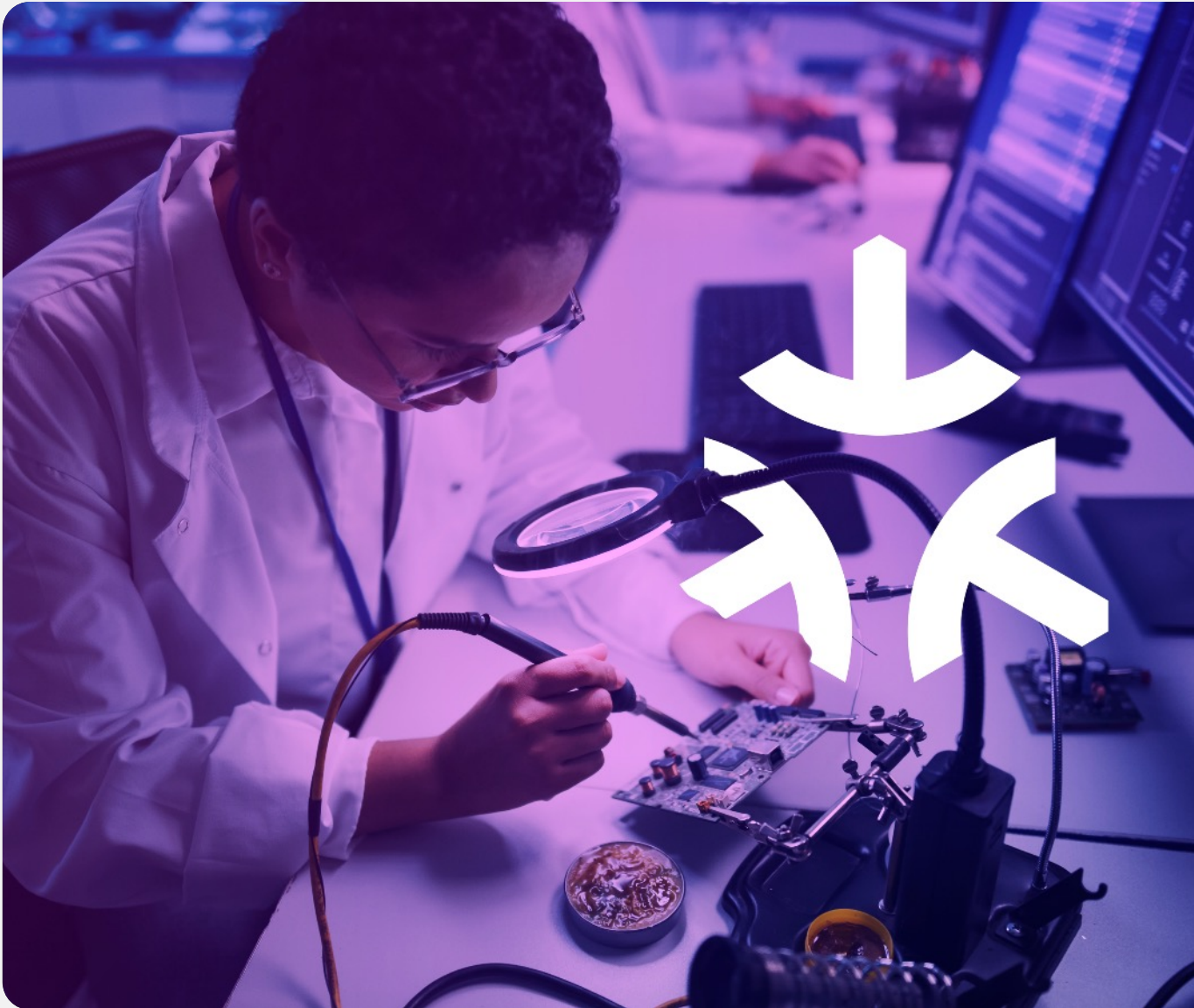
MATTER SERIES

Agenda

- 01** Matter Certification
- 02** Different Certification Paths
- 03** Optional Ecosystem Certification
- 04** Certification Timing and Cost
- 05** Summary

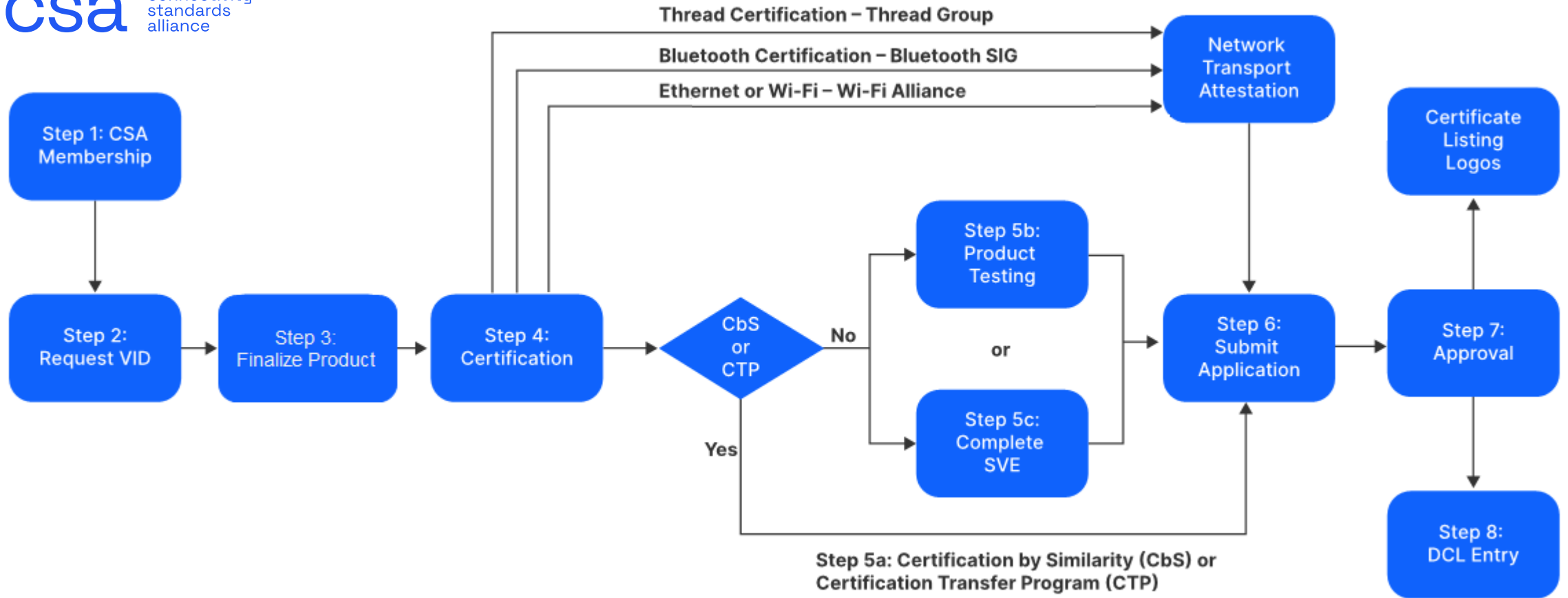
Matter Certification

Matter Certification Steps



1. **Become a member of the CSA**
2. **Request a Vendor ID code (VID) from CSA Certification**
3. **Select applicable network transports used in your product**
4. **Certification from relevant standards organization**
5. **Matter Product testing**
 - a. If product will be Certification by Similarity (CbS) or Certification Transfer Program (CTP) – go directly to step 6
 - b. Choose an authorized test provider and submit testing
 - c. OR ensure final SVE results are uploaded in TEDS
6. **Submit certification application to the CSA via the Certification Web Tool**
7. **Application review by CSA Certification**
8. **Approval – Certificate of Compliance, CSA website listing, certified logos, Certification Declaration (CD)**
9. **Distributed Compliance Ledger (DCL) compliance record**

Overview – Certification Steps



Step 1 – CSA Membership



- **Select a membership level**
 - Adopter or higher needed to develop, test and certify
 - Associate members can only participate in Certification Transfer Program
 - Membership benefits and comparison available on [CSA website](#)
- **Ready to join?**
 - Follow three-step process under “How to Become a Member”: <https://csa-iot.org/become-member/>
- **Questions about choosing a membership level? Contact CSA Member Services:** help@csa-iot.org

Step 2 – Obtain a Vendor ID code (VID) and determine your Product ID (PID)



- To request a Vendor ID code (also called a Manufacturer ID code), email certification@csa-iot.org
 - A code will be assigned to your company and sent to you via reply email
- The Manufacturer Code database is published monthly on for CSA members
 - <https://groups.csa-iot.org/wg/members-all/document/10905>
- VID codes are valid immediately upon assignment
 - Will appear in the database in the next published update
- Decide on Product ID(s)
 - A Product ID is your own unique 16-bit number to identify distinct Matter products.
 - You may have as many product IDs as you want but each has their own unique certification ID

Steps 3-4 –Product Development & Network Transport Selection/Certification



- **Products with Thread, Wi-Fi, or Bluetooth need certification for relevant standards**
 - Must complete before finalizing your Matter certification
- **Network transports supported at launch:**
 - Ethernet (IEEE PMA Compliance Attestation required)
 - Wi-Fi (Wi-Fi 4/802.11n or later – requires WPA3)
 - Thread (1.3.0 or later)
 - Bluetooth to support Matter commissioning (LE v4.0 or later)
- **Complete the relevant CSA Attestation of Network Transport Protocol Conformance/Certification form(s)**
 - <https://groups.csa-iot.org/wg/members-all/document/folder/31>
 - Choose the appropriate form for your network transport(s)
 - You will need to upload the form(s) to your Matter application
- **Complete the CSA Security Attestation**
 - <https://groups.csa-iot.org/wg/members-all/document/folder/2255>
 - Includes security recommendations and requirements
 - Fill out based on how you have implemented your product

Matter Wi-Fi Certification for Silicon Labs' Customers



Matter Wi-Fi Requirements

- **Must certify Bluetooth with Bluetooth SIG**
 - If using Silicon Labs certified part, can skip testing
 - ▶ Must still submit certification documents to BT SIG
- **May certify Wi-Fi with Wi-Fi Alliance**
 - If using the Wi-Fi Certified logo, you must test and certify
- **Must certify Matter with CSA**
 - Must test a qualified test house
 - Must submit documents to CSA
 - ▶ Bluetooth and Wi-Fi certification IDs
 - ▶ Can use Silicon Labs' Wi-Fi certification ID if not using Wi-Fi Certified logo

Matter Thread Certification for Silicon Labs' Customers



Matter Thread Requirements

- **Must certify Bluetooth with Bluetooth SIG**
 - If using Silicon Labs certified part, can skip testing
 - Must still submit certification documents to BT SIG
- **Must certify Thread with Thread Group**
 - If using Silicon Labs certified part, can skip testing
 - Must still submit certification documents to Thread Group
- **Must certify Matter with CSA**
 - Must test a qualified test house
 - Must submit documents to CSA
 - Bluetooth and Thread certification IDs

Step 5b – Matter Certification Testing

- **Generate Product PICS – Protocol Implementation Conformance Statement**
 - A list of all mandatory and optional features implemented
 - Use the CSA [PICS Tool](#) to generate/complete XML PICS
- **New product applications require compliance testing at a CSA Authorized Test Provider**
 - Usually done on your own timetable
 - Testing can also be done at a CSA sponsored event
- **A current list of Authorized Test Providers can be found on the CSA website**
 - <https://csa-iot.org/certification/testing-providers/>
 - Test provider must be validated to perform Matter testing
- **After testing is completed, your test provider will issue a final test report to the CSA**
- **Pre-testing can be completed on your own using the CSA provided Test Harness**
 - This same harness will be used by the testing provider



Step 5c – Spec Validation Event (SVE) Certification

- **New device types are tested over multiple CSA test events and a final Spec Validation Event (SVE)**
 - Those participating in the SVE and pass all the testing *may be* eligible for a product certification
 - Must still wait for the CSA to announce and approve the new release of the specification
 - Timing, location, and number of events are dictated by the Matter Working Group within the CSA
- **Product is always only eligible for certification with successful completion of full phase testing**
 - Test results from SVE can be used to apply certification provided no software changes are made afterwards
 - If SVE involved running all tests then no additional tests are necessary.
 - If SVE is a subset of tests, remaining tests must undergo ATL testing using the same software version
 - The combined results can be used to apply for certification
- **Final SVE results must be uploaded in TEDS**
 - All submitted tests must have a passing result and be validated by the assigned authorized test lab (ATL)
- **SVEs occur infrequently, and most will be using the normal certification testing process.**
 - Unless you need new features or device types, recommend to use the normal certification testing process.

SVE – Specification Validation Event
ATL – Authorized Test Lab

Step 6 – Submit Certification Application

- **Certification applications are submitted via the [Certification Web Tool](#)**
 - For instructions on requesting an account, using the tool, and submitting applications see: [Certification Tool User Guide](#)

Welcome to your CSA Certification Web Tool Dashboard

Use the buttons below add a product or to see products in various stages of the certification process.

[Add New Product Application](#) [Add a Certification Transfer Application](#) [Add Certification by Similarity Application](#)

[Start a Family](#) [Extend a Family](#) [Re-Certify a Family](#)

[View Applications Awaiting Payment](#) [View Approved Products](#) [View In Review Applications](#)

[Suspended/Failed Applications](#)

[ZUTH Installers](#) [Certified Logos](#) [Fee Schedule](#)

Incomplete (saved) New Product Certification Applications

Below is a listing of applications you have started for new product certifications but which have not yet been submitted for processing by the Alliance.

Add New Product Application

Indicate whether you would like the Connectivity Standards Alliance to include your product on its list of Certified Products on the Alliance public website.

Product Name *

Product Short Description *

Up to 255 characters.

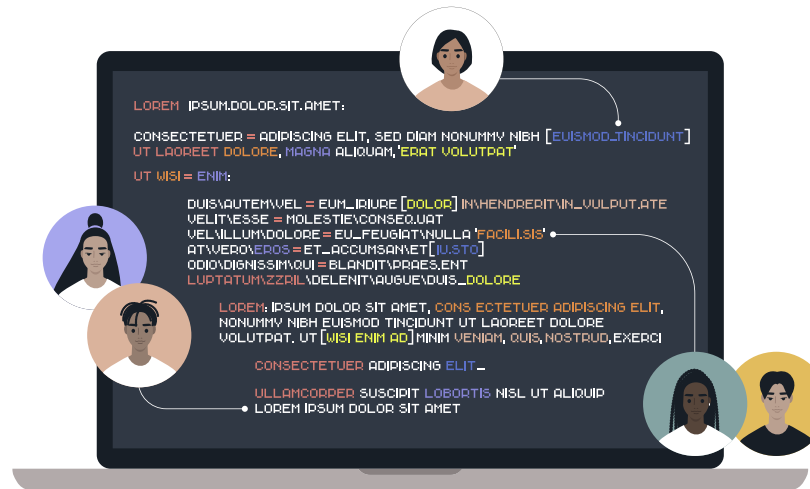
Product Long Description *

Product Link URL

Step 6 – Submit Certification Application

- **Required documents and information (tip: gather/prepare these in advance):**
- **Documents**
 - [Declaration of Conformity \(DoC\)](#)
 - PICS – Protocol Implementation Conformance Statement
 - [Network Transport Attestation](#) (not required for SW Component applications)
 - [Security Attestation](#)
- **Data**
 - Product ID (PID)
 - [Vendor ID](#) (VID) – assigned VID will appear in application
 - Device Type (for End Products, enter this in the “Technical Sub Categories” field of the application)
 - Device Role / Media Device Type (SW Component applications)
 - dac_origin_vendor_id (optional – see Matter specification)
 - dac_origin_product_id (optional – see Matter specification)
 - authorized_paa_list (optional – see Matter specification)

Step 7 – Application Review



- **Submit your application**
 - It will enter the review queue
- **CSA Certification will review your application**
 - Issuance of a certificate of compliance (if there are no issues with the application after review)
 - Or an e-mail communication back with a list of items that need to be addressed to continue processing

Step 8 - Approval



- **Certificate of Compliance**
 - PDF certificate document sent via email upon approval
- **Public listing of certified products**
 - Product listing posted to the [CSA Certified Products Database](https://www.csa-certified.com/) at [csa-certified.com](https://www.csa-certified.com/)
 - Unless otherwise requested
- **Matter certified logos**
 - Logos authorized for use with your certified products are located on your Certification Tool dashboard
- **Certification Declaration (CD) blob file**
 - A separate email notification will be sent with instructions for download when the CD file for the product is ready
 - It will be available in the Certification Tool from the account that submitted the application)

Step 9 – Distributed Compliance Ledger (DCL)

▪ What is it?

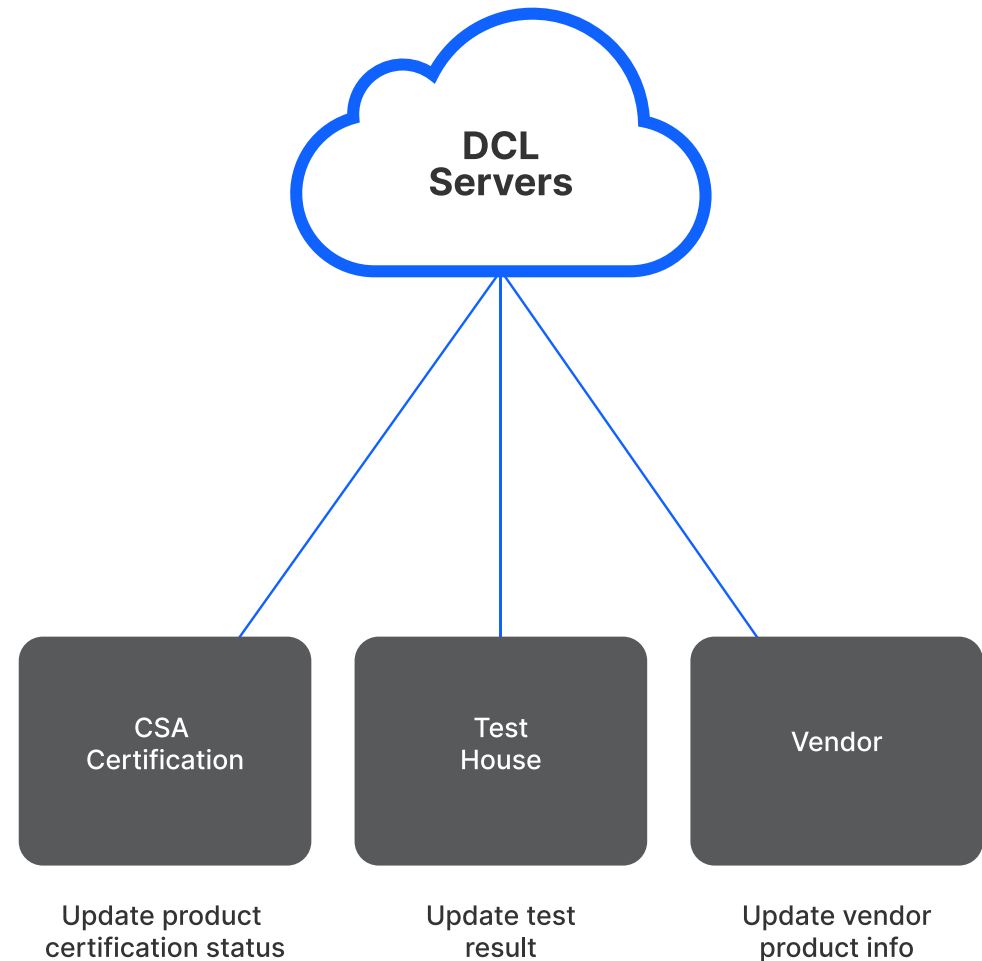
- Distributed database of all certified products
 - Certification status
 - Product name / description
 - Firmware Upgrade URI

▪ What is the benefit?

- Commissioners can restrict access to only certified devices
- Users can verify that a device is authentic

▪ How is it managed?

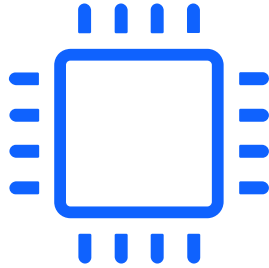
- All Matter certified products are publicly available
 - <https://webui.dcl.csa-iot.org>
- Write to the DCL is restricted to the following roles
 - CSA Certification role
 - Test House role
 - Vendor role
- A certified product record is entered by the CSA Certification



Different Certification Paths

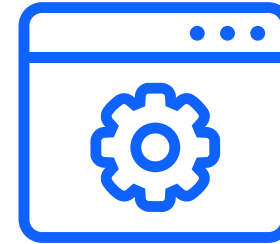
Main Certification Paths

Matter Hardware Certification



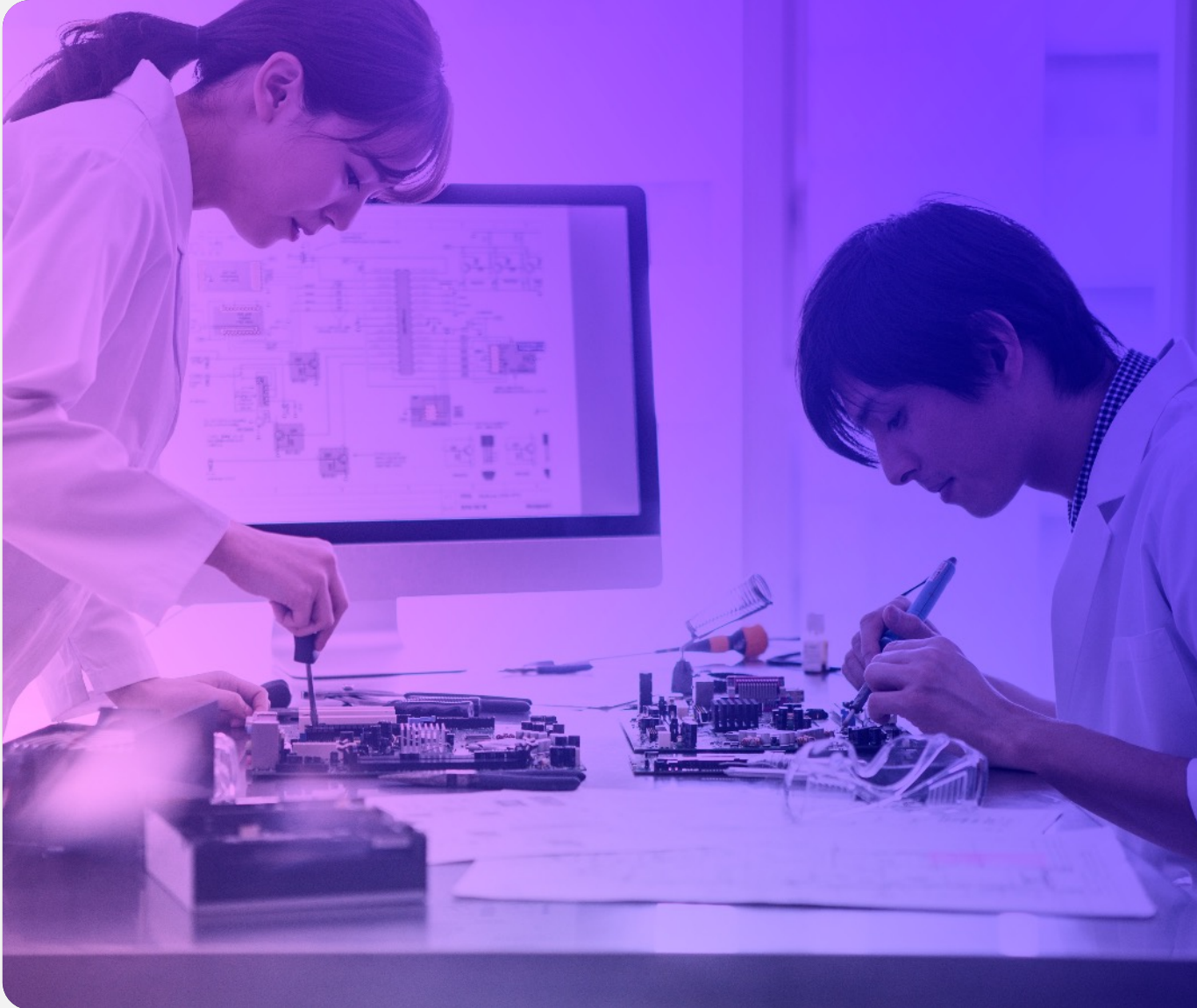
- Designed for embedded devices and end products
- All software and hardware evaluated together
- Modifications to the software that impact Matter require re-certification
- Limited hardware changes allowed

Matter Software Component Certification



- Designed for app-based devices
- Mainly for Matter controllers
- Component declares a Supported Operating Environment (SOE) that it runs on
- Underlying SOE software can change
- Underlying SOE hardware can change

Additional Certification Choices



- **Normal Path for single product**
 - Full testing either at SVE and/or ATL
 - Intended for new design products
- **Product Family Certification (PFC) Path**
 - Intended for certification of variants of the SAME product (same SW including Device ID, except language differences)
 - First “Parent” product needs full testing either at SVE or ATL
 - Other “Family” products are certified without the need for testing
- **Certification by Similarity (CbS) Path**
 - Intended for certification of a SIMILAR product (same Matter SW)
 - ▶ SIMILAR product must be certified by either Normal or Product Family Certification
 - Product is certified without the need for testing
 - May be applicable for a re-certification
- **Certification Transfer Program**
 - Available for cases of re-labelling a product manufacturer by another member
 - Available to Associate Members

Optional Ecosystem Certification

Reduce Product Costs and Time-to-Revenue

- **Optional Ecosystem certification done after Matter certification**

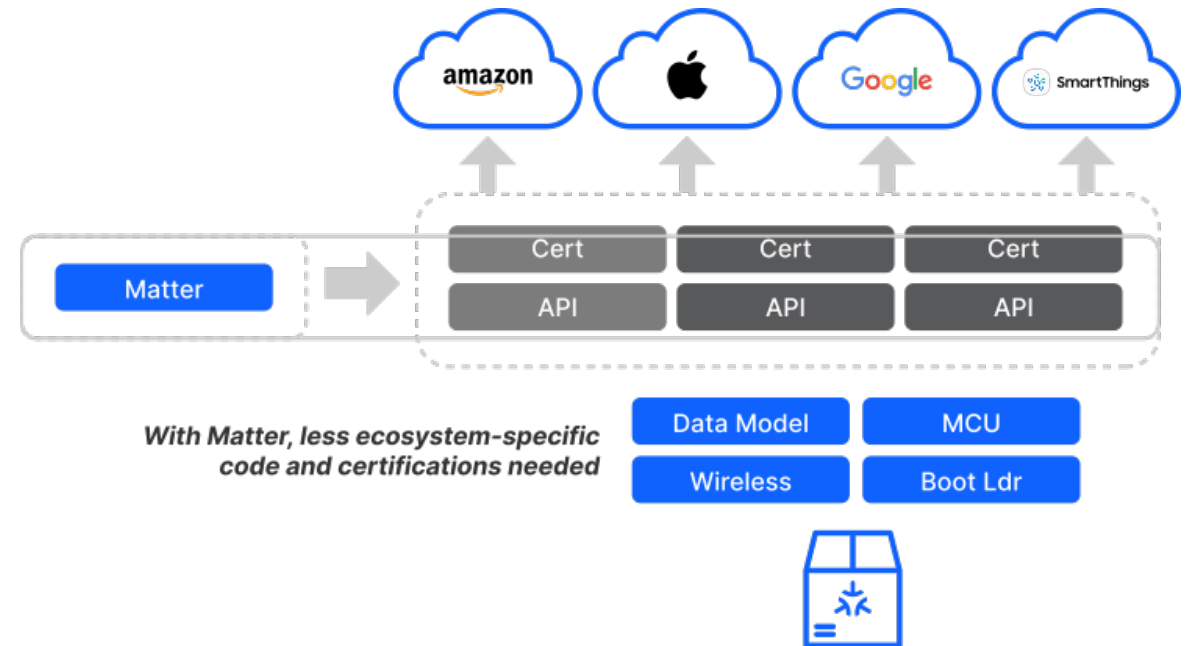
- Only light-effort ecosystem-specific interoperability testing for ecosystem specific features and base functionality
 - i.e. Google Home and Away Intelligence clusters
 - i.e. Amazon Matter Simple Setup (MSS)

- **Why would device manufacture want it?**

- Allows badge to be included on packaging
- Inclusion in Ecosystem marketing
- Ensures smooth interoperability with Ecosystems
- Includes differentiated features with Ecosystems

- **Why do users want it?**

- Helps guide users to their Ecosystem
- Provides guarantee of working with their Ecosystem



Where do you get started?

- Amazon - <https://developer.amazon.com/en-US/alexa/matter>
- Apple - <https://developer.apple.com/apple-home/matter/>
- Google - <https://developers.home.google.com/matter>
- SmartThings - <https://developer.samsung.com/smarthings>

Certification Timing and Cost

Matter Certification Fee Schedule (as of Feb. 27, 2023)

	Associate	Adopter*	Participant*	Promoter*
New Certification (by Testing)				
Application fee	N/A	3,000	2,000	2,000
Authorized Test Provider Fee	Based on Test Provider			
Certification by Similarity (CbS)				
Application fee	N/A	2,500	1,500	1,500
Certification Transfer Program				
Application fee	2,500	2,500	1,500	1,500
CTP listing (annually)**	500	FREE	FREE	FREE
Family Certification Program				
New family application fee	N/A	8,000	4,000	4,000
Recertification (family update) application fee	N/A	8,000	4,000	4,000
Family extension (adding variants) application fee	N/A	1,000	500	500

Normal Certification

Certification by Similarity (CbS)

Family Certification

* Includes a yearly fee starting at 7000 USD/year

** CTP listing fees for any existing certified products are immediately removed upon upgrade to Adopter or a higher level membership.

*** All fees are listed in US Dollars (USD).

BLE, Thread and Wi-Fi Fees (as of Feb. 27, 2023)

	Bluetooth SIG	Thread Group	Wi-Fi Alliance
Alliance Membership Levels			
Membership Fees	Adopter - \$0		
	Associate* – \$9000	Implementer - \$7500	Implementer*** - \$6000 (2024)
	Associate** – \$42000	Contributor - \$15000	Contributor - \$20000 (2024)
Authorized Test Labs			
Testing Fee	Varies based on ATL	Varies based on ATL****	Varies based on ATL
Product Certifications			
Certification Fees (per Product).	Declaration Fee (Adopter) - \$9600	Inheritance (Implementer) - \$1500	FlexTrack (Contributor)- \$5000
	Declaration Fee (Associate) - \$4800	Inheritance (Contributor) - \$1000	QuickTrack (Contributor)- \$7500
		Certification at ATL**** - \$2500	Derivative (Contributor)- \$600
			Derivative (Implementer) - \$4000

NOTE: The above info is for guidance only. Visit the respective alliance's website for the most up-to-date information and fees.

*For companies with annual revenue < \$100M

**For companies with annual revenue >\$100M

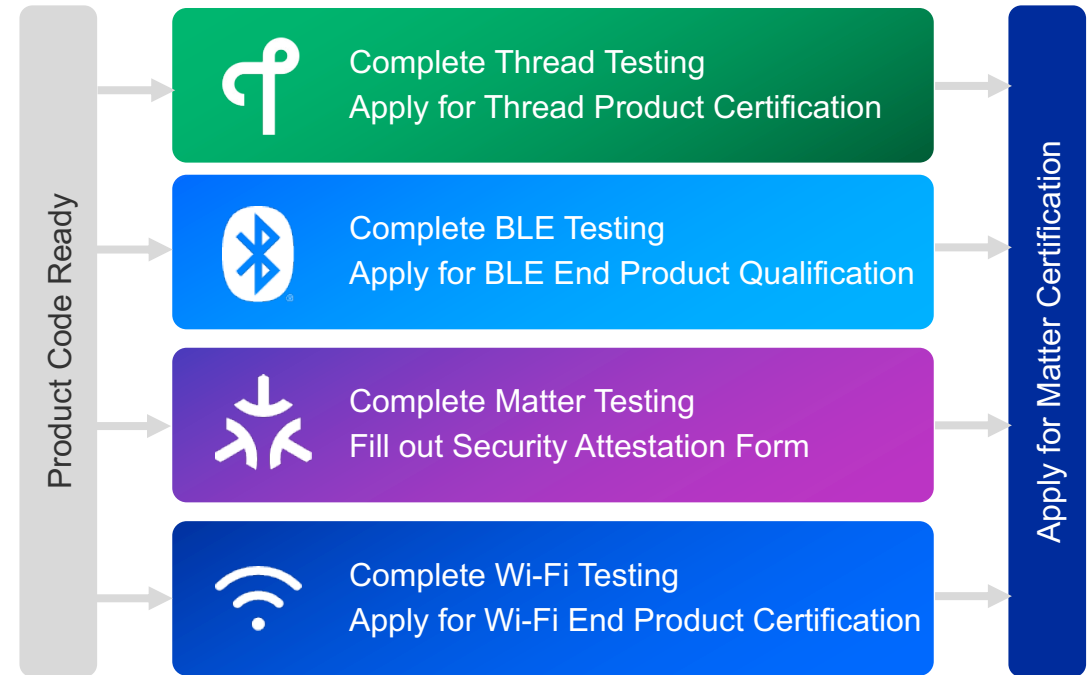
***Wi-Fi Alliance Implementer is for companies that are using unmodified Wi-Fi modules certified by another company and want to use the Wi-Fi Certified brand

**** If using an uncertified thread stack or an altered certified thread component

Summary

Matter Certification Summary

Area	Certification Body	Testing Requirement	Certification Requirements
Matter	CSA	Full Matter End Product Testing	<ul style="list-style-type: none"> CSA Membership Matter Testing completed Certification ID for each transport CSA Security Attestation completed Pay CSA Certification fee
Thread	Thread Group	<p>No Testing required if using Silicon Labs Certified Libraries for SOC</p> <p>Authorized Test Lab Testing needed for RCP</p>	<ul style="list-style-type: none"> Thread Group Membership required (even for inheritance) Thread testing completed Apply for Thread Product Certification Pay Thread Certification Fee
Bluetooth	Bluetooth SIG	Reduced Testing if using Silicon Labs Bluetooth Qualified Component	<ul style="list-style-type: none"> Bluetooth SIG Membership Completed BLE Testing Pay BLE Certification Fee
Wi-Fi	Wi-Fi Alliance	No Testing required if using Silicon Labs Certification	<ul style="list-style-type: none"> No separate certification at Wi-Fi Alliance required if using Silicon Labs Certified Stack.



Three Certification Levels – How Silicon Labs Helps?

STACK CERTIFICATION



- **Bluetooth Low Energy** – Stack is qualified with the Bluetooth SIG and is inheritable.



- **Thread** - Stack is certified and inheritable.



- **Wi-Fi** - solutions are tested and certified with the Wi-Fi Alliance but are not inheritable.

MATTER CERTIFICATION



- **Matter certification is not inherited**
 - End devices must be certified and do not inherit from platforms
 - Silicon Labs pre-tests our sample apps in the Test Harness

ECOSYSTEM CERTIFICATION

Interoperability testing and certifications are optional for smart home ecosystems.

- Certification grants use of the official *Works With* badges and additional features

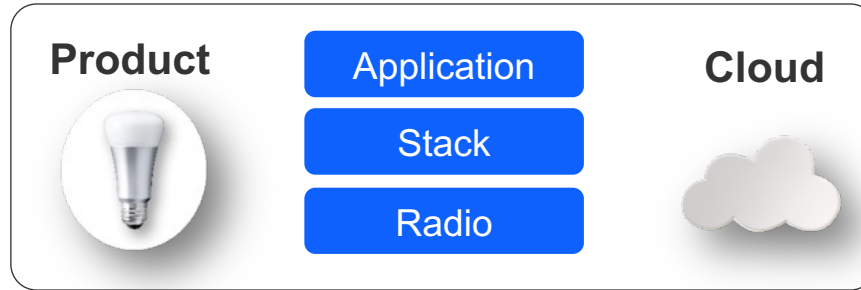


- **Silicon Labs' wireless network stacks are certified with the respective standardization bodies to save development time and costs. Simplicity Studio streamlines testing and certification for your team.**

- **Silicon Labs offers CSA-certified Matter solutions and an SDK, including certified application examples. Saving development time and costs.**

- **Silicon Labs' implementations have been tested with the popular IoT ecosystems. Our documentation, guides, and tools will streamline your certification processes.**

Silicon Labs Streamlining Ecosystem Integration



1. Establish relationship

- Work with ecosystem partner

2. Connect product

- Embed wireless technology
- Wireless certification

3. Connect ecosystem

- Ecosystem integration
- Ecosystem specific tests

4. Launch

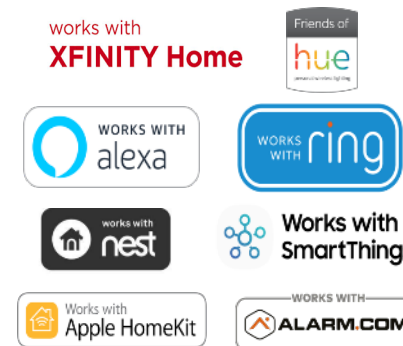
- Works With Badges
- Joint marketing



Making introductions



Supplying suite of developer and certification tools



Providing guidance



- 100% committed to IoT, actively engaged with eco-systems and partners
- Can assist customers at every step through the process

Q&A



MATTER SERIES



MATTER SERIES

Join Us
Next Month

tech **talks** UPCOMING SESSIONS

FEB 9TH | Matter: Evaluation to Certification

MAR 9TH | Certifying a Matter Device: Thread and Wi-Fi

APR 6TH | Getting Started: Matter Over Wi-Fi

MAY 4TH | Start Your Matter Development Journey

JUN 1ST | What's New in Matter?



Scan to Register



Matter Workshops

Attend an in-person workshop that will enable you to quickly develop an IoT product leveraging Matter

- Free MG24 Multiprotocol Explorer Kit
- Locations and dates in the US, Canada, and Europe now through June
- Customized workshops for smart home, industrial, healthcare, and consumer applications

2023



Thank You



MATTER SERIES

Watch  **ON DEMAND**

silabs.com/training