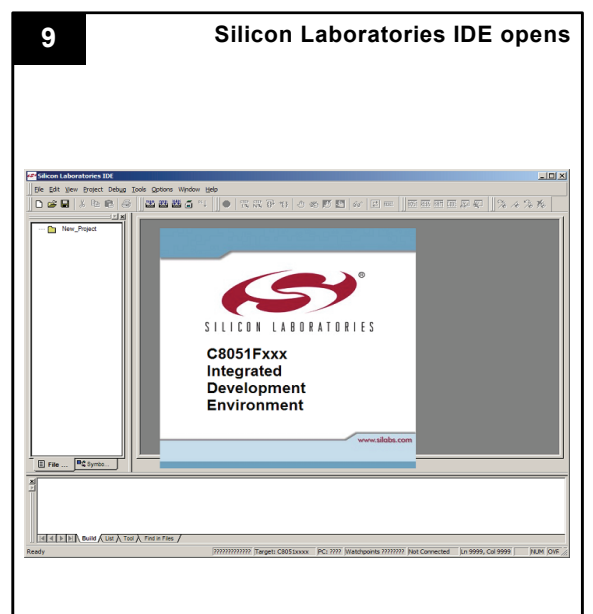
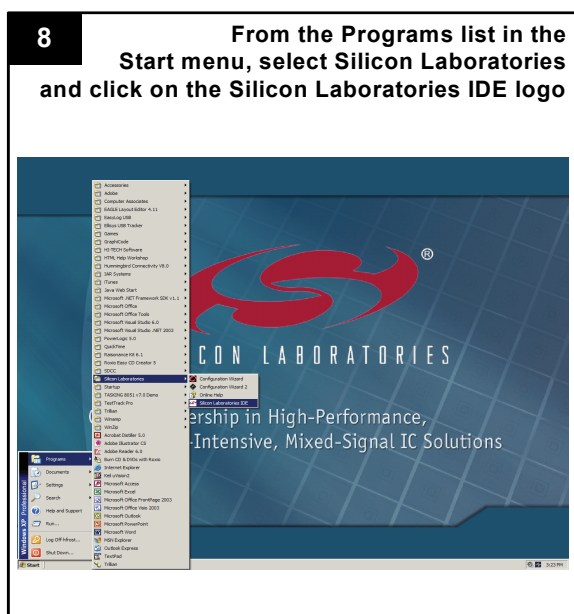
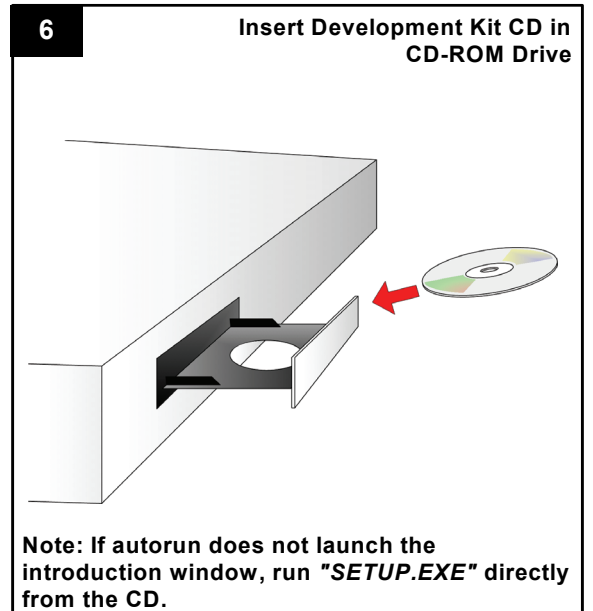
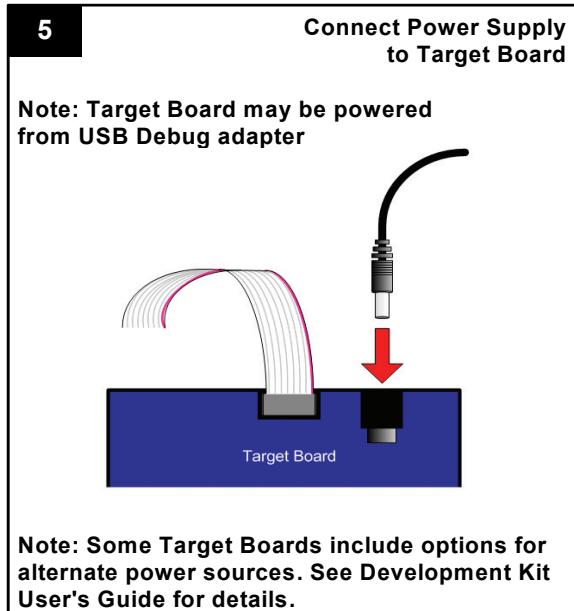
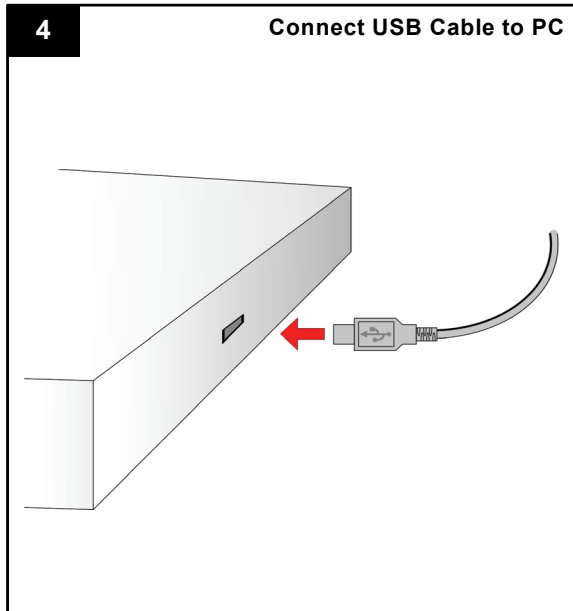
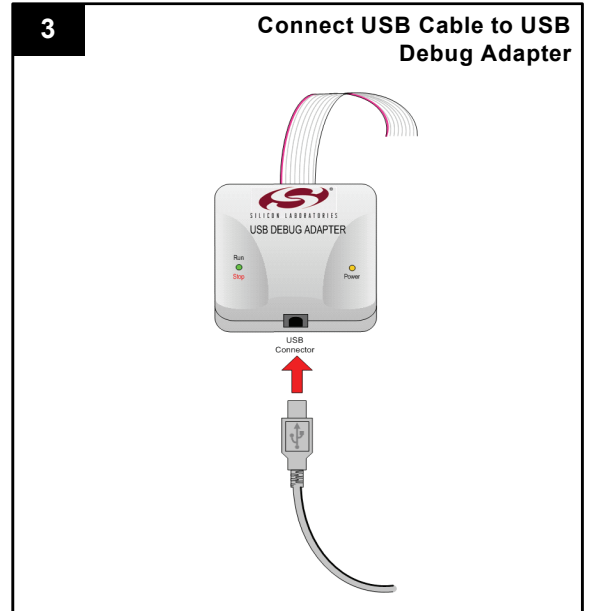
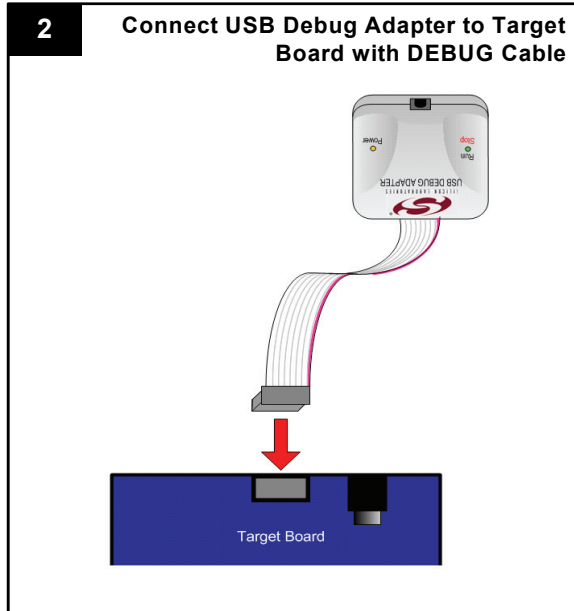
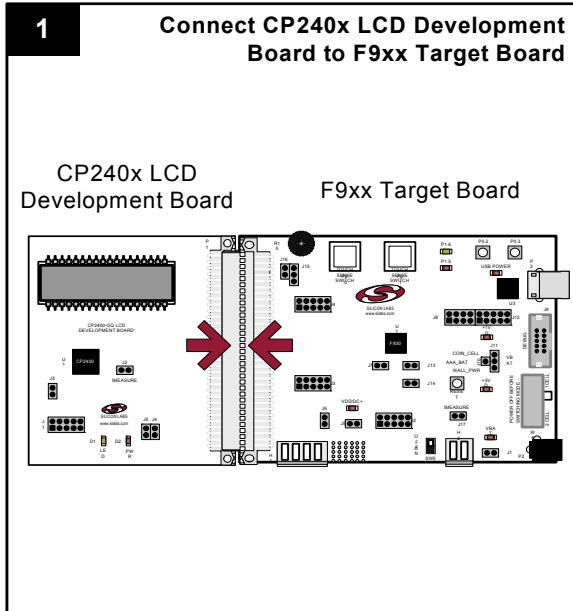


CP240X LCD DEVELOPMENT KIT QUICK-START GUIDE

Installation



Example Program

10 Select "Connection Options..." from "Options" menu

Select USB Debug Adapter

Select C2 Debug Interface

11 Connect to Target Board

12 Select "Download Object File..." from "Debug" menu

Next, click Browse and select the hex file "CP240x_Digits_Example.hex" located at "C:\SiLabs\MCU\CP240x\CP240x_LCD_Example"

Click Download

13 Execute example program

Digits "01234567" will be shown on the CP240x LCD Development Board

14 Stop execution of example program

15 Application Note 104: Integrating Keil 8051 Tools Into the Silicon Labs IDE has information on unlocking the evaluation compiler from a 2k code size limit to a 4k limit. It can be found on our application notes page here:

<https://www.silabs.com/products/mcu/Pages/ApplicationNotes.aspx>

The Keil Toolset Serial Number is needed and can be found on the Dev Kit CD

16 Open Project file "CP240x_LCD_Example.wsp" located at "C:\SiLabs\MCU\CP240x\CP240x_LCD_Example\Source"

17 Click on "main.c" to open source file

Build and Download the Program

18 Follow the instructions in the C2400 and CP2401 Development Kit User's Guide to modify the project and run other included examples

The User's Guide can be found under "Browse Documentation" in the menu on Step 7 of this Quick Start Guide

If you are having trouble installing and/or using the development kit, please use the following support resources:

- CP2400 and CP2401 Development Kit User's Guide (click "Browse Documentation" from the CD introduction window)
- Application Note "AN104: Integrating Keil 8051 Tools Into the Silicon Labs IDE" (contains instructions for obtaining the 4 k limited version of the Keil toolset)
- Latest versions of Application Notes can be found at <https://www.silabs.com/products/mcu/Pages/ApplicationNotes.aspx>
- MCU Knowledgebase (available at www.silabs.com → SUPPORT)
- Contact an Applications Engineer using the online information request form (available at www.silabs.com → SUPPORT → Contact Technical Support).