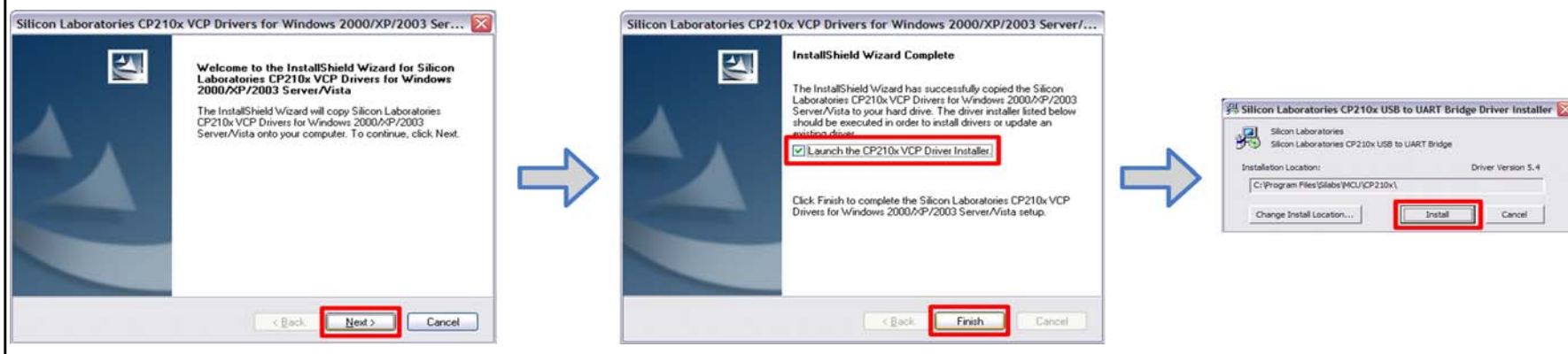
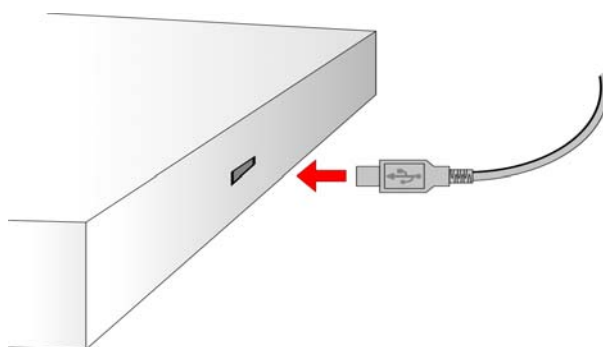


# ITO FILM EVALUATION BOARD QUICK-START GUIDE

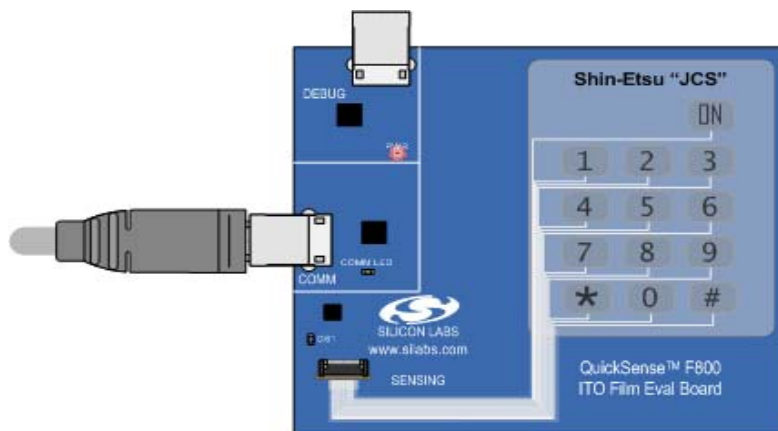
- 1** Download the CP210x VCP drivers from the Silicon Labs website ([www.silabs.com/mcudownloads](http://www.silabs.com/mcudownloads)) and Install them on your PC. If they are already installed, skip to Step 2.



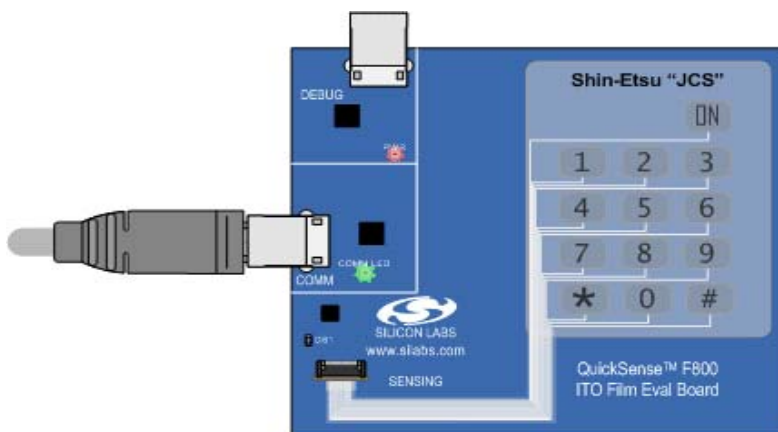
- 2** Plug in the USB cable to the PC where the CP210x VCP drivers are installed.



- 3** Connect the other end of the USB cable to P2 (COMM) on the ITO Film Evaluation Board. The PWR (DS5) LED should turn on.



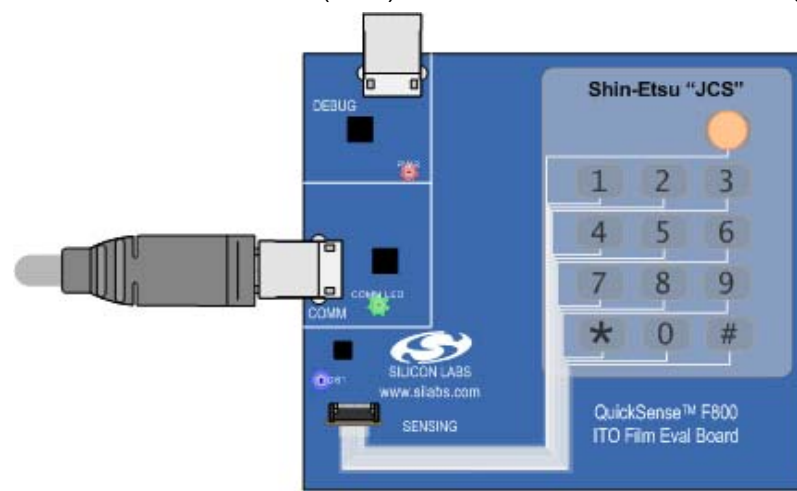
- 4** Wait for the ITO Film Evaluation Board to enumerate. The COMM LED (DS6) should turn on when this process has finished.



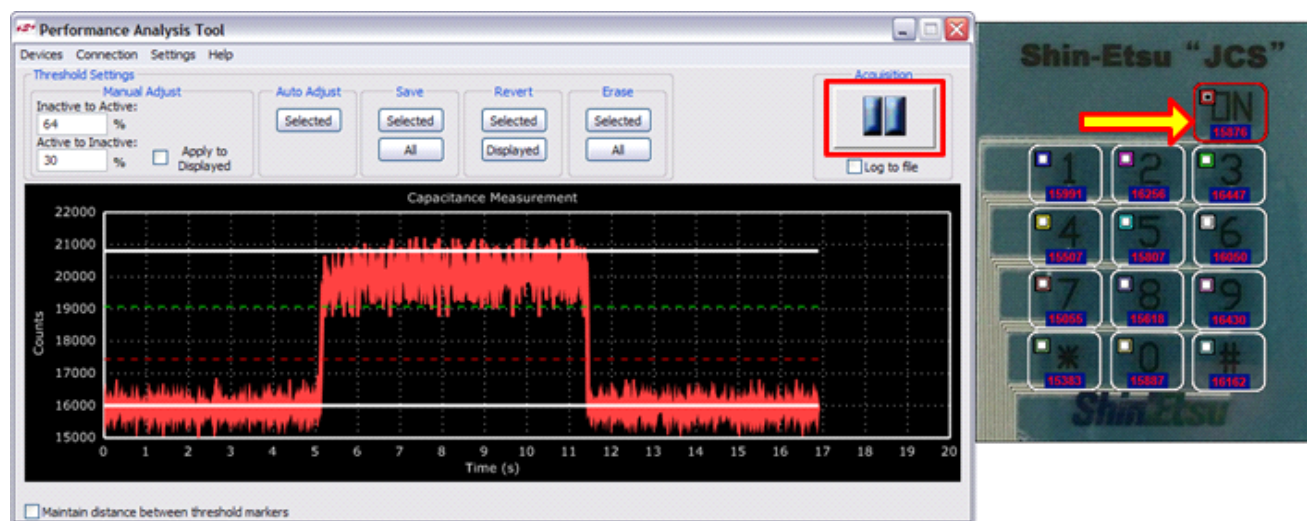
- 5 After installing the QuickSense™ Studio software to the PC, open the Performance Analysis Tool, and select the Evaluation Board COM port under the Devices menu.



- 6 Touch the keypad buttons on the board. The blue LED (DS1) should turn on whenever a finger touches one of the buttons..



- 7 To monitor a channel in the Performance Analysis Tool, click on the white line surrounding the button. Press the "Start Acquisition" (play) button in the Performance Analysis Tool. The keypad button's thresholds and measured values will be displayed.



For more information, including supporting software and documentation, please visit the Silicon Labs ITO Film website located at [www.silabs.com/keymat](http://www.silabs.com/keymat).