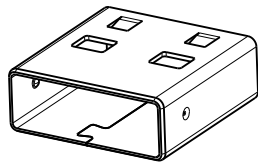


This drawing contains confidential information and is the property of without whose permission it may not be copied, shown or handed to a third party or otherwise used, and it is to be returned promptly upon request to the which is responsible for the drawing.

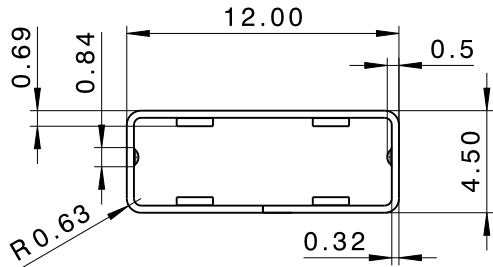
[2] Critical dimensions which must be under capability SAFETY REQUIREMENT
--- Visible surfaces.
--- Draft angles (not shown):

| | |
|-----------------------|--|
| THEORETICAL FLAT AREA | |
| DEVELOPED FLAT AREA | |
| GENERAL TOLERANCES | |
| ANGLES | |
| LENGTHS AND DIAMETERS | |

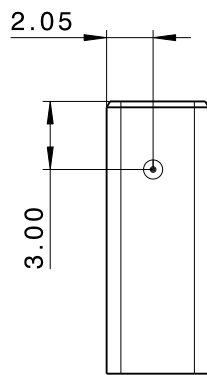
A3



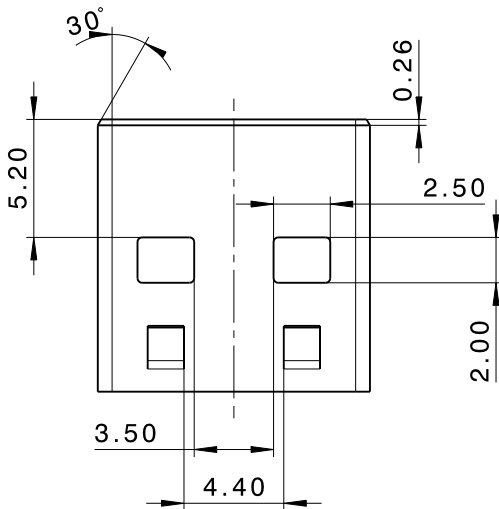
Isometric view
Scale: 2:1



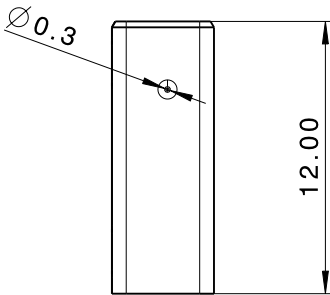
Bottom view
Scale: 3:1



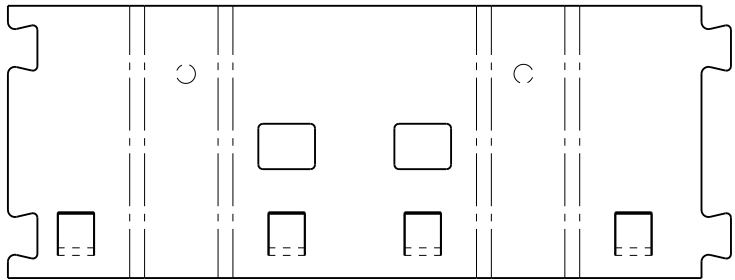
Right view
Scale: 3:1



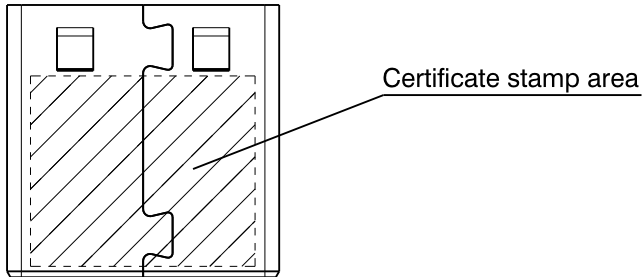
Front view
Scale: 3:1



Left view
Scale: 3:1



Unfolded view
Scale: 3:1



Rear view
Scale: 3:1

NOTES:

- For complete documentation, this drawing must be accompanied by a 3D-cad file with Part. vers. number as stated in the title block
- Dimensions in this drawing are numbered by the numbers: 1-3. Only dimensions with a dimension number are to be measured.
- All unmarket fillets according 3D-file
- Material thickness 0.32mm
- Delivery details/reel specification to be agreed between shield supplier and BlueGiga
- Burr side -> outside
- Changes since last approved version:
Dimensions added:
Dimensions removed:

TOLERANCES OF
LINEAR DIMENSIONS
Fine ISO 2768-f

| Dimension | Tolerance |
|-------------|-----------|
| 0.5 - 3 | ± 0.05 |
| 3 - 6 | ± 0.05 |
| 6 - 30 | ± 0.1 |
| 30 - 120 | ± 0.15 |
| 120 - 400 | ± 0.2 |
| 400 - 1000 | ± 0.3 |
| 1000 - 2000 | ± 0.5 |
| 2000 - 4000 | - |

For nominal sizes below 0.5 mm
the deviations shall be as
indicated adjacent to the
relevant nominal size(s)

TOLERANCES OF
RADII AND CHAMFERS
Fine ISO 2768-f

| Radius, cham-fer height | Tolerance |
|-------------------------|-----------|
| 0.5 - 3 | ± 0.2 |
| 3 - 6 | ± 0.5 |
| over 6 | ± 1 |

For nominal sizes below 0.5 mm
the deviations shall be as
indicated adjacent to the
relevant nominal size(s)

| | | | | | |
|-------------|-----------------|-------------------------|--------------------|-------------------------|------------|
| A.001 | A.001 | PEP | 12/04/2011 | | |
| DRAWING REV | MODEL REV | CREATED BY | DATE | CHECKED AND APPROVED BY | DATE |
| MATERIAL | Stainless steel | | AISI 304 | TREATMENT | - |
| | | ORIGINAL SIZE | A3 | ORIGINAL SCALE | 3:1 |
| | | ITEM DESCRIPTION | 5300072 Metal Part | | |
| | | ITEM CODE | P-00003414 | DOCUMENT NUMBER | D-00000897 |
| | | PROJECT NAME AND NUMBER | 5300072 | | |

A