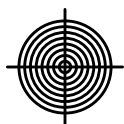
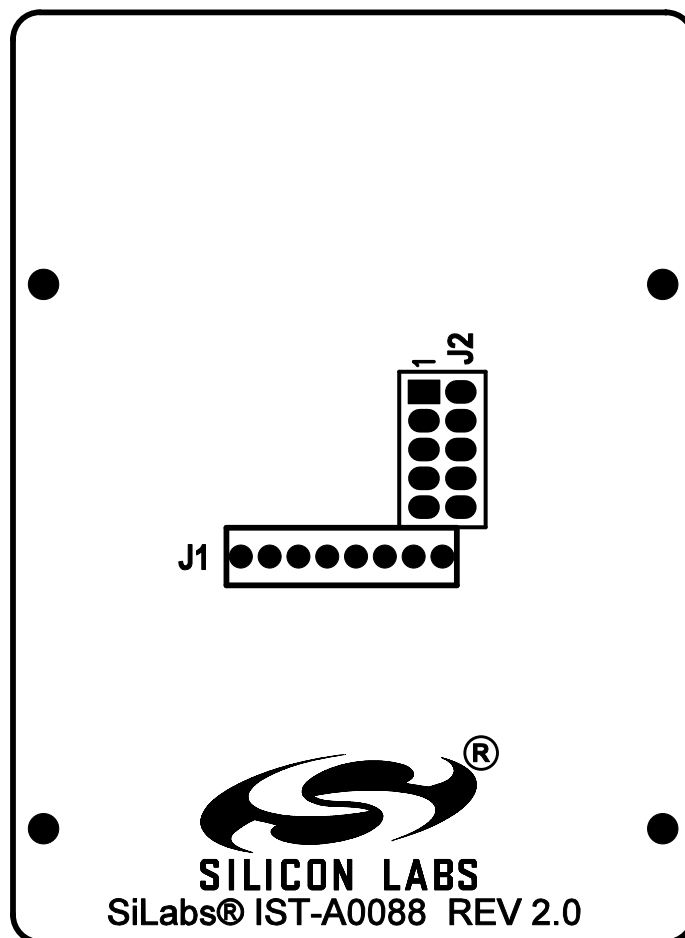
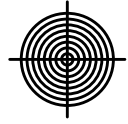
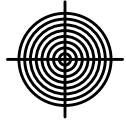
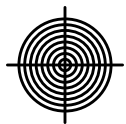
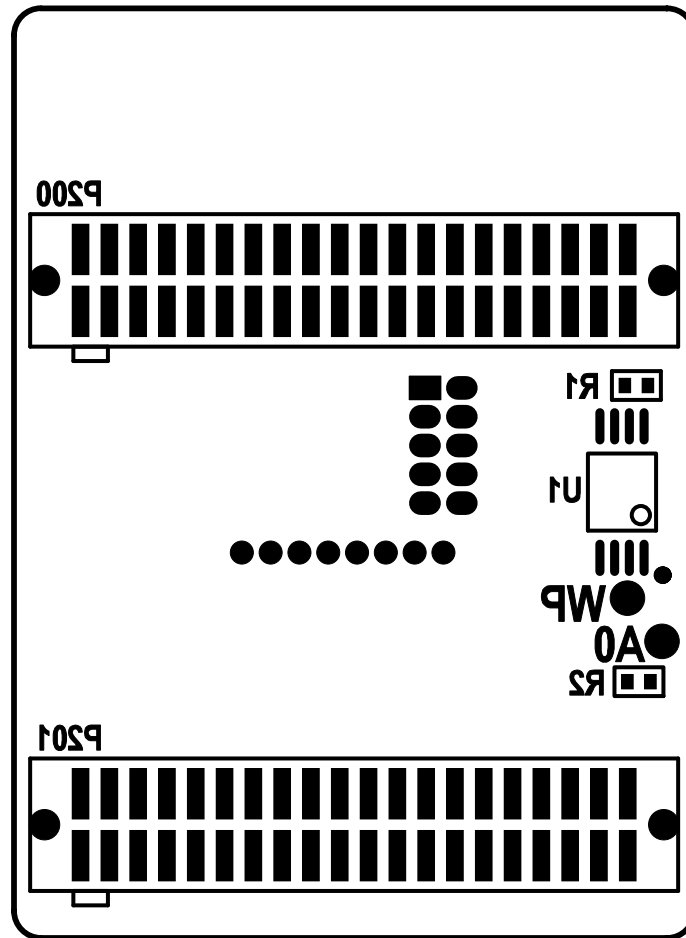


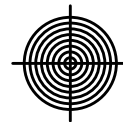
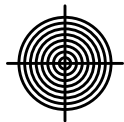
## PRIMARY SILKSCREEN



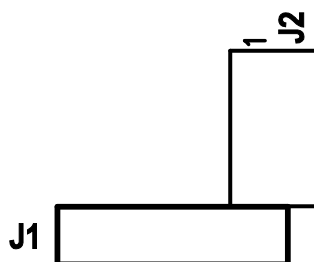


# SECONDARY SILKSCREEN

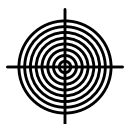


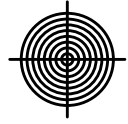
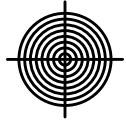


## PRIMARY SILKSCREEN

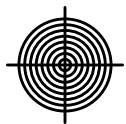
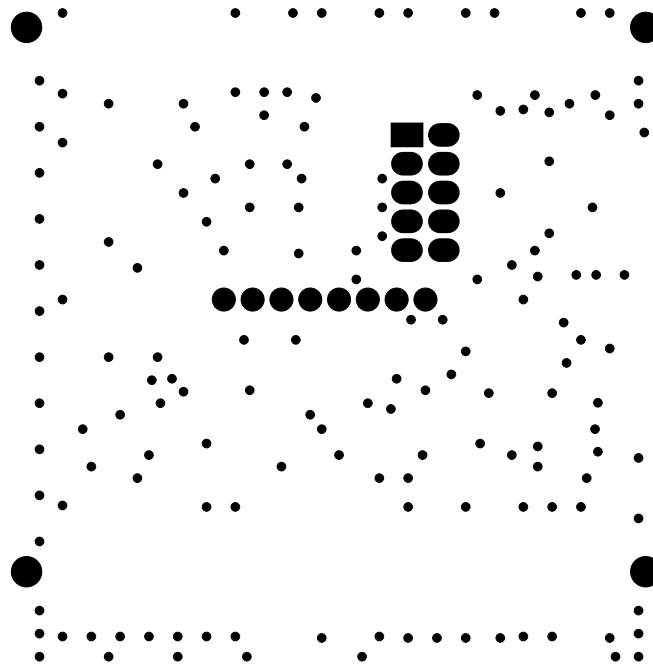


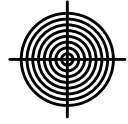
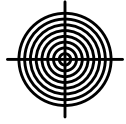
  
**SILICON LABS**  
SiLabs® IST-A0088 REV 2.0



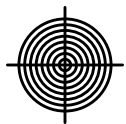
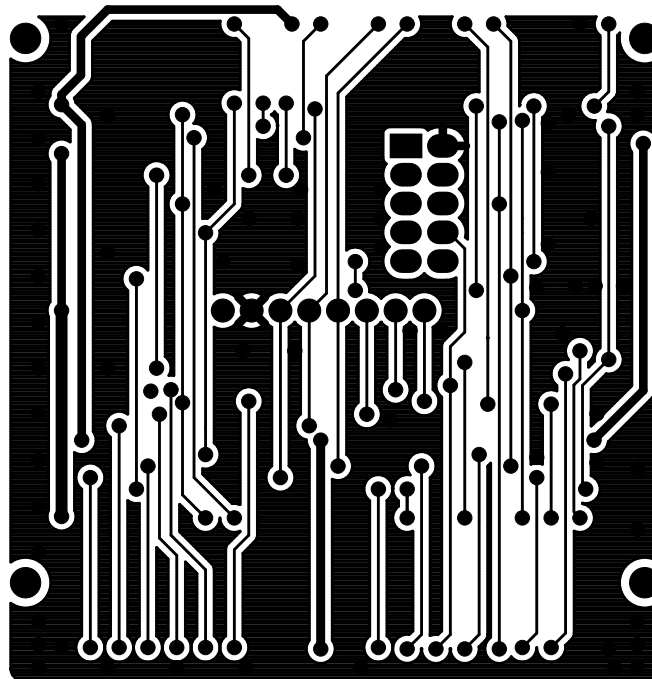


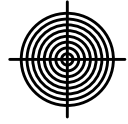
# PRIMARY SOLDER MASK



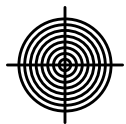
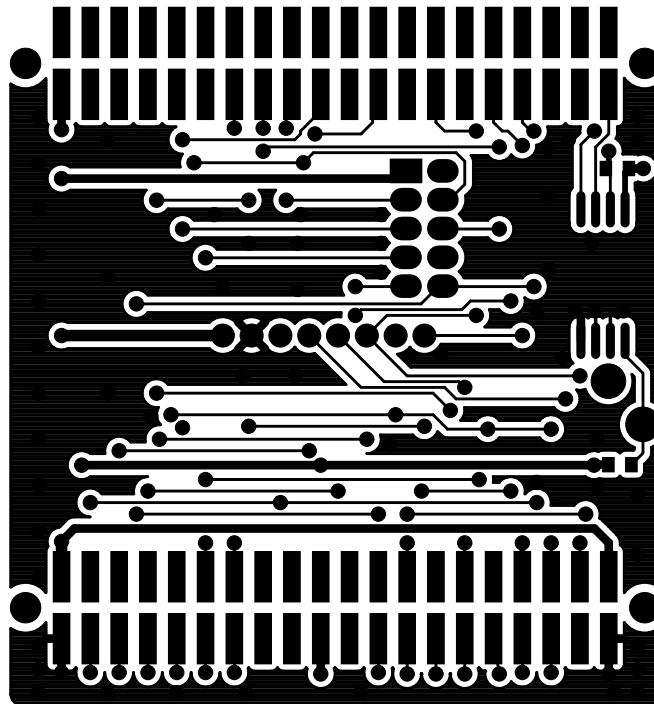


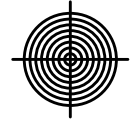
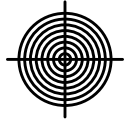
# PRIMARY SIDE



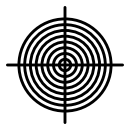
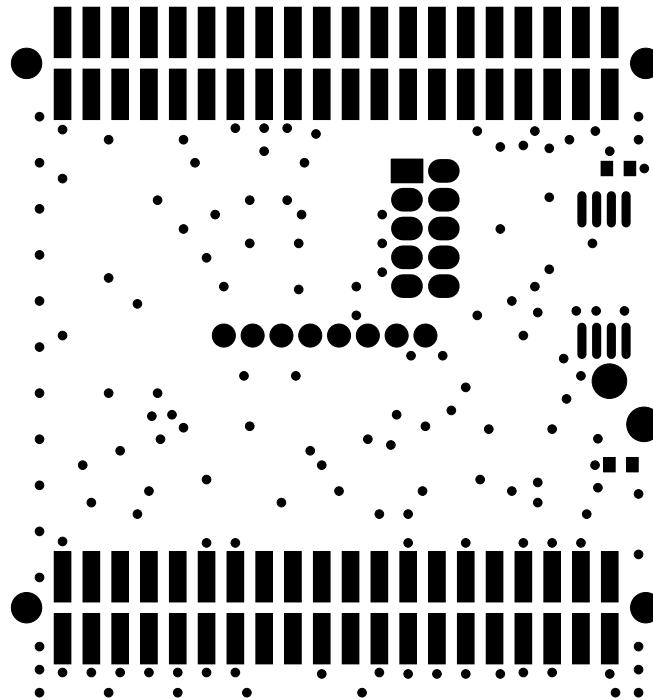


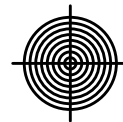
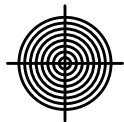
## SECONDARY SIDE





# SECONDARY SOLDER MASK





## SECONDARY SILKSCREEN

P500

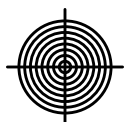
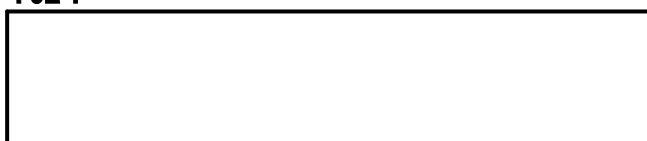


R1 ☐

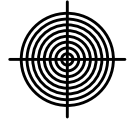
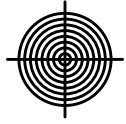
U1 ☐

WP  
A0  
R2 ☐

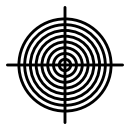
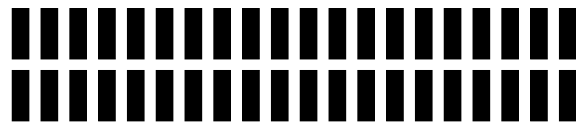
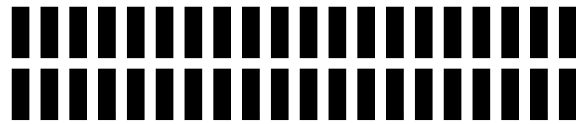
P501

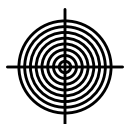
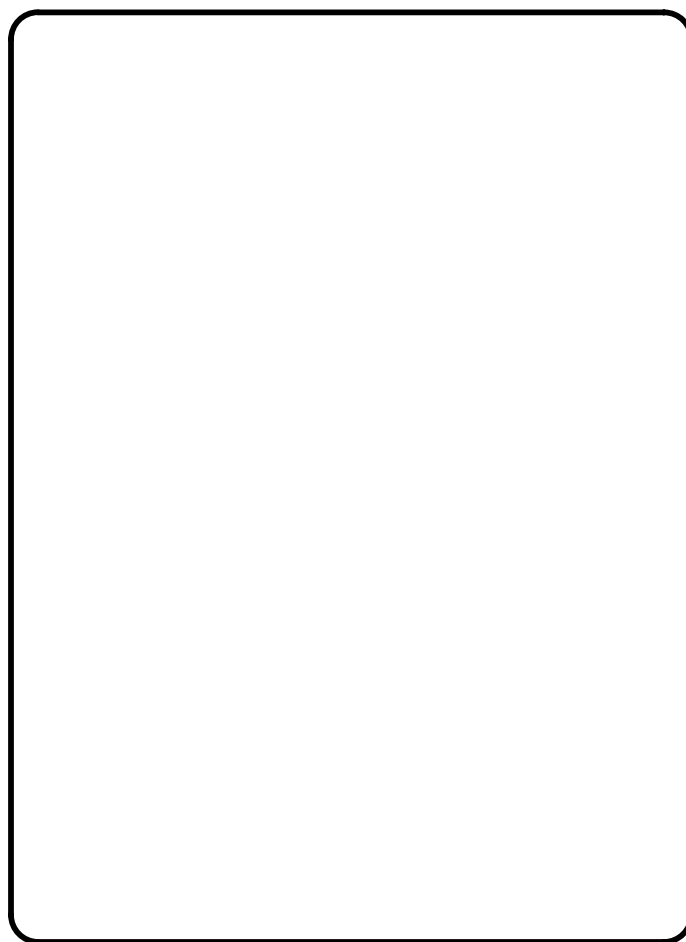
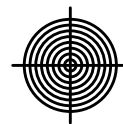
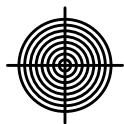


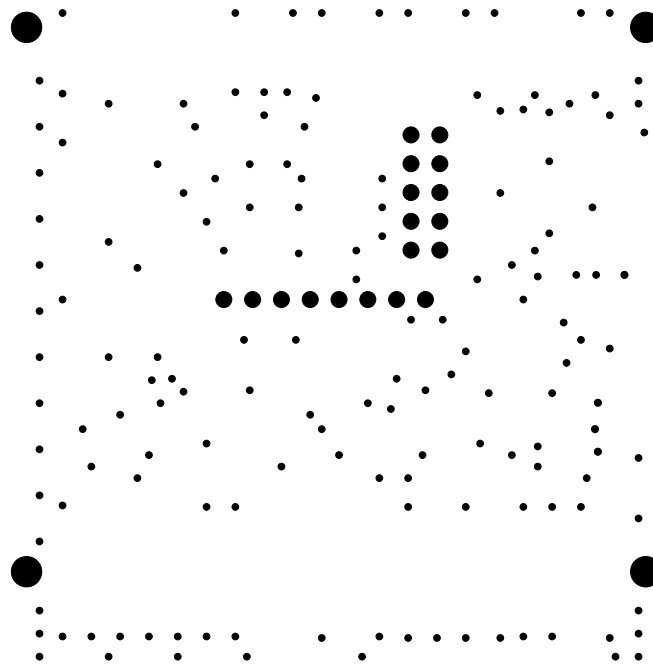


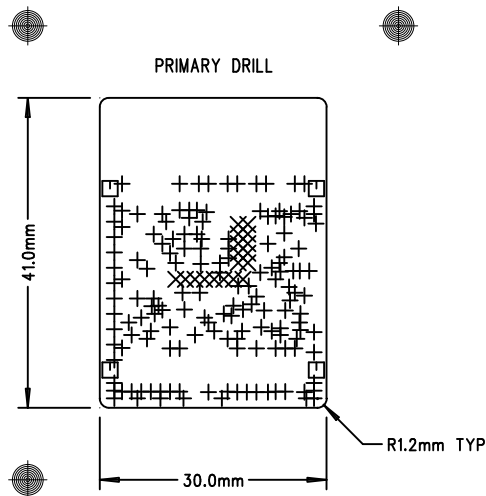


# SECONDARY SOLDER PASTE









# NOTES : UNLESS OTHERWISE SPECIFIED

1. MANUFACTURE IN ACCORDANCE WITH IPC-6012, TYPE 3, CLASS 2.
2. END PRODUCT FEATURES SHALL NOT VARY MORE THAN 20% FROM ARTWORK ORIGINALS.
3. MATERIAL SHALL BE COPPER CLAD FR-4, NEMA GRADE PER IPC-4101/26, COLOR NATURAL.
4. COPPER WEIGHT SHALL BE 1.0 OZ./SQ. FT. BEFORE PLATING.
5. ALL PLATED THROUGH HOLES SHALL HAVE A MINIMUM OF 0.001" COPPER.
6. DRILL HOLE TOLERANCE AFTER PLATING SHALL BE  $\pm 0.003$ ".
7. MINIMUM ANNULAR RING SHALL BE 0.001".
8. MINIMUM ANNULAR RING AT EMERGENT CONDUCTORS SHALL BE 0.003".
9. FINAL PCB THICKNESS SHALL BE 0.062"  $\pm 10\%$ .
10. WARP/TWIST SHALL NOT EXCEED 1.0%
11. FINISH SHALL BE LPI, BLACK SMOBC, ENIG BOTH SIDES.
12. SILKSCREEN WITH NONCONDUCTIVE WHITE EPOXY INK.
13. REFERENCE ADDITIONAL FAB NOTES IN FILE README.TXT

## LAYER STACKUP


|                      |
|----------------------|
| PRIMARY SILKSCREEN   |
| PRIMARY SOLDERMASK   |
| PRIMARY SIDE         |
| SECONDARY SIDE       |
| SECONDARY SOLDERMASK |
| SECONDARY SILKSCREEN |

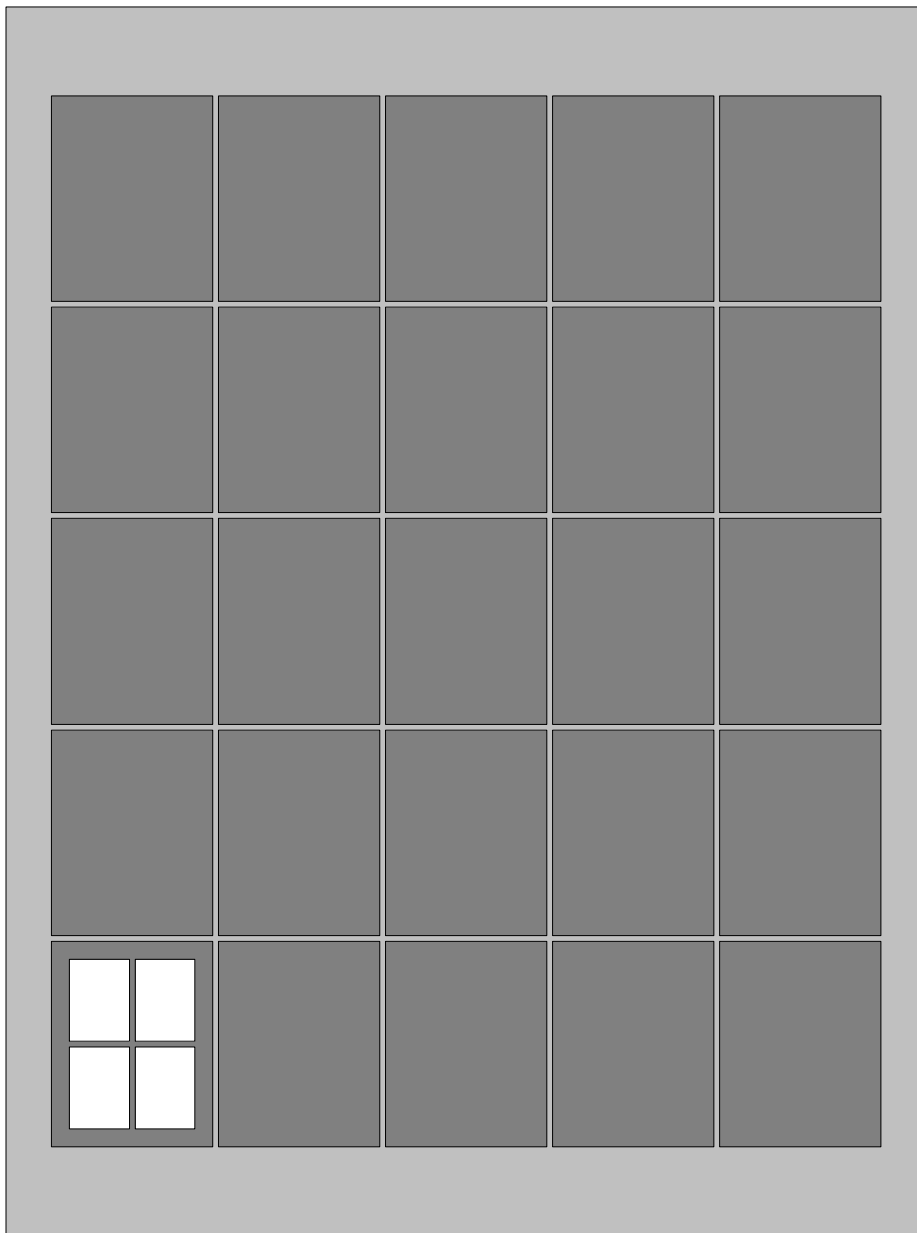
## FILE NAMES

|             |
|-------------|
| A88_PSS.PHO |
| A88_PSM.PHO |
| A88_PRI.PHO |
| A88_SEC.PHO |
| A88_SSM.PHO |
| A88_SSS.PHO |

SCALE: NONE

| SIZE  | QTY | SYM | PLT | TOOL | TOL       |
|-------|-----|-----|-----|------|-----------|
| 0.012 | 155 | +   | P   | 1    | +0/-0.012 |
| 0.028 | 18  | X   | P   | 2    | +/-0.003  |
| 0.053 | 4   | □   | N   | 3    | +/-0.003  |

|   |                    |                        |  |     |           |   |                     |              |
|---|--------------------|------------------------|--|-----|-----------|---|---------------------|--------------|
| UNLESS OTHERWISE SPECIFIED                      |                    |                        | THIS DOCUMENT CONTAINS PROPRIETARY INFORMATION AND SHALL NOT BE DUPLICATED OR USED FOR ANY PURPOSE OTHER THAN THAT FOR WHICH PROVIDED OR DISCLOSED IN WHOLE OR IN PART, WITHOUT THE WRITTEN CONSENT OF SILICON LABORATORIES, INC.. |     |           | COMPANY:  |                     |              |
| DIMENSIONS ARE IN INCHES AND APPLY AFTER FINISH |                    |                        |  |     |           |  400 W Cesar Chavez<br>AUSTIN, TX 78701<br>(512)416-8500<br>www.silabs.com |                     |              |
| INTERPRET DRAWING PER MIL-D-1000                |                    |                        |  |     |           | NAME:   |                     |              |
| TOLERANCES                                      |                    |                        |  |     |           | IST-A0088   |                     |              |
| HOLE TOLERANCES PER 78027                       |                    |                        |  |     |           | REV : 2.0   |                     |              |
| DECIMALS<br>.XX +/-<br>.XXX +/-                 | ANGLES<br>+/-      | SURFACES<br>MICRINCHES | DESIGN   | YAS | 30JUN2016 | SIZE  | PART NUMBER:        |              |
| PART TO BE FREE OF BURRS                        |                    |                        | LAYOUT   | CT  | 30JUN2016 | A   |                     |              |
| BREAK EDGES<br>MAX                              | BEND RADIUS<br>MAX | BEND RELIEF<br>MAX     | DO NOT SCALE DRAWING   |     |           | SCALE 1:1   | FABRICATION DRAWING | SHEET 1 OF 1 |



## IST-A0088 REV 2.0

### Size:

Panel: 18.0 x 24.0  
Array: 3.162 x 4.028  
Part: 1.181 x 1.614

### Panel Yield:

25 Arrays of 4 Parts  
100 Parts Total  
73.7% Material Utilization

### Matrix:

On Panel: 5 x 5, Origin: X0.895 Y1.73  
On Array: 2 x 2

### Spacing:

On Panel: 0.1 x 0.1  
On Array: 0.1 x 0.1

### Panel Borders:

Left: 0.895 Right: 0.895  
Top: 1.73 Bottom: 1.73

### Array Borders:

Left: 0.35 Right: 0.35  
Top: 0.35 Bottom: 0.35

### Notes:

Please add 4, 0.125" NP tooling holes located 0.125" from tab corners and 3, 40/120 fiducials to each side of array located 0.25" from tooling holes.