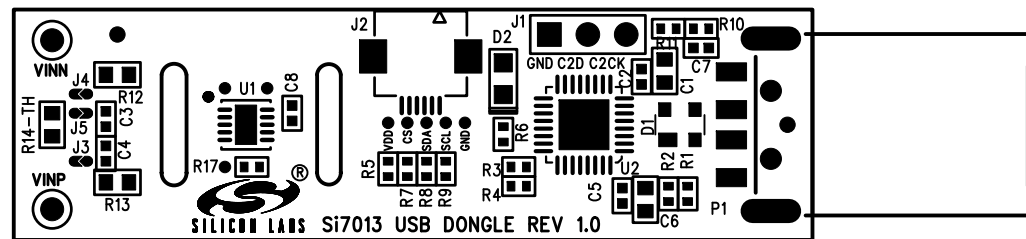
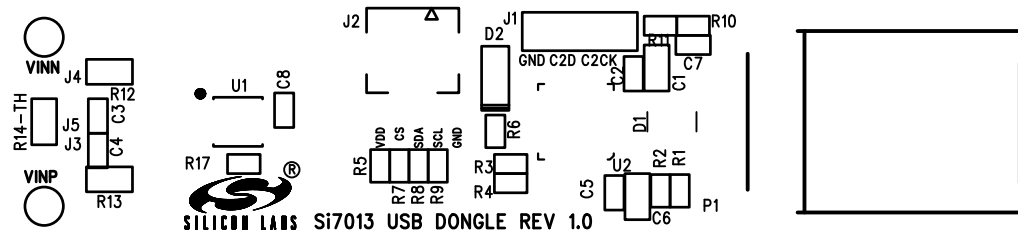


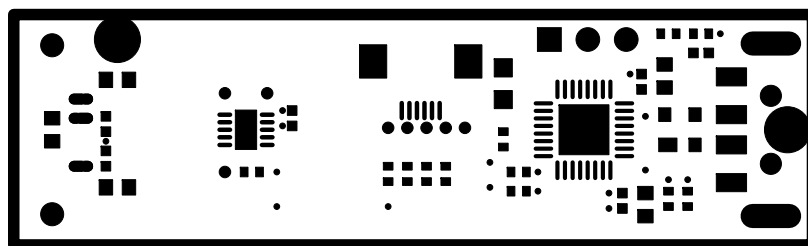
PRIMARY SILKSCREEN



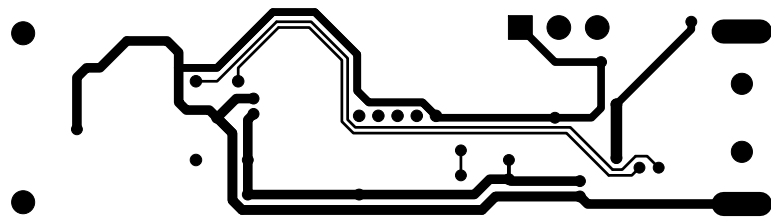
PRIMARY SIDE PRIMARY SILKSCREEN



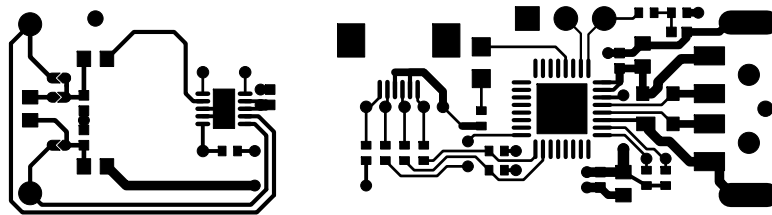
PRIMARY SOLDER MASK



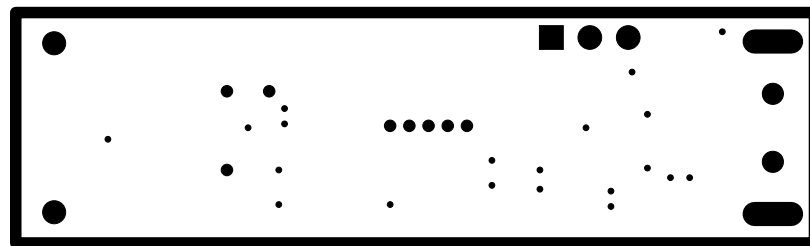
SECONDARY SIDE



PRIMARY SIDE



SECONDARY SOLDER MASK

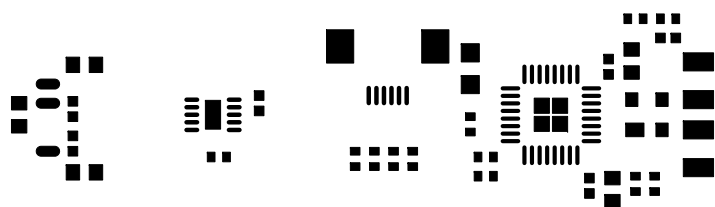


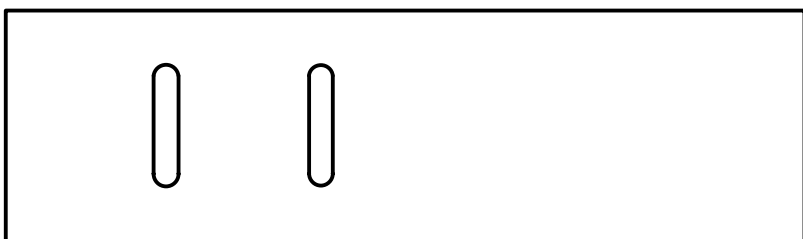
SECONDARY SILKSCREEN

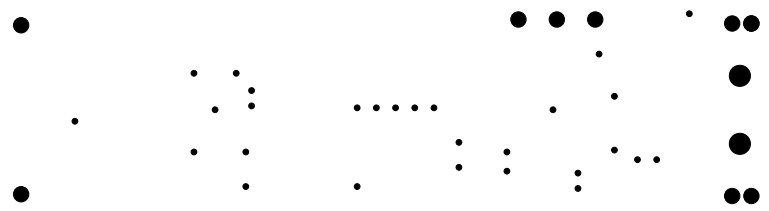
Free-Software Download www.silabs.com\2i7013U2B-Dongle



PRIMARY SOLDER PASTE







NOTES : UNLESS OTHERWISE SPECIFIED

1. MANUFACTURE IN ACCORDANCE WITH IPC-6012, TYPE 3, CLASS 2.
2. END PRODUCT FEATURES SHALL NOT VARY MORE THAN 20% FROM ARTWORK ORIGINALS.
3. MATERIAL SHALL BE COPPER CLAD FR-4, NEMA GRADE PER IPC-4101/26, COLOR NATURAL.
4. COPPER WEIGHT SHALL BE 1.0 OZ./SQ. FT. BEFORE PLATING.
5. ALL PLATED THROUGH HOLES SHALL HAVE A MINIMUM OF 0.001" COPPER.
6. DRILL HOLE TOLERANCE AFTER PLATING SHALL BE ± 0.003 ".
7. MINIMUM ANNULAR RING SHALL BE 0.001".
8. MINIMUM ANNULAR RING AT EMERGENT CONDUCTORS SHALL BE 0.003".
9. FINAL PCB THICKNESS SHALL BE 0.062" $\pm 10\%$.
10. WARP/TWIST SHALL NOT EXCEED 1.0%
11. FINISH SHALL BE LPI, RED SOLDER MASK OVER OXIDIZED COPPER, HASL BOTH SIDES.
12. SILKSCREEN WITH NONCONDUCTIVE WHITE EPOXY INK.
13. REFERENCE ADDITIONAL FAB NOTES IN FILE README.TXT

LAYER STACKUP

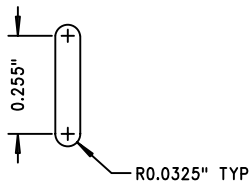
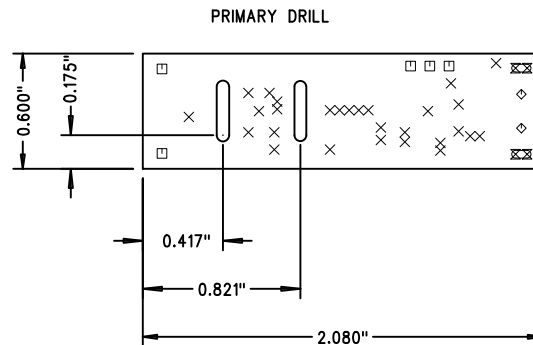
PRIMARY SILKSCREEN
PRIMARY SOLDERMASK
PRIMARY SIDE
SECONDARY SIDE
SECONDARY SOLDERMASK
SECONDARY SILKSCREEN

FILE NAMES


7013USBD_PSS.PHO
7013USBD_PSM.PHO
7013USBD_PRI.PHO
7013USBD_SEC.PHO
7013USBD_SSM.PHO
7013USBD_SSS.PHO

SCALE: NONE

SIZE	QTY	SYM	PLATED	TOL
0.015	28	✕	YES	+0/-0.015
0.04	5	□	YES	+/-0.003
0.055	2	◇	NO	+/-0.003
0.04 x 0.1	2	⊗	YES	+/-0.003



SLOT DETAIL
2 PLACES

UNLESS OTHERWISE SPECIFIED			THIS DOCUMENT CONTAINS PROPRIETARY INFORMATION AND SHALL NOT BE DUPLICATED OR USED FOR ANY PURPOSE OTHER THAN THAT FOR WHICH PROVIDED OR DISCLOSED IN WHOLE OR IN PART, WITHOUT THE WRITTEN CONSENT OF SILICON LABORATORIES, INC..			COMPANY:  400 W Cesar Chavez AUSTIN, TX 78701 (512)416-8500 www.silabs.com		
DIMENSIONS ARE IN INCHES AND APPLY AFTER FINISH DIMENSIONS IN BRACKETS [] ARE IN MILLIMETERS INTERPRET DRAWING PER MIL-D-1000						NAME: Si7013 USB-DONGLE		
TOLERANCES						REV : 1.0		
HOLE TOLERANCES PER 78027								
DECIMALS .XX +/- .XXX +/-	ANGLES +/-	SURFACES MICROINCHES	DESIGN	JG	01MAR2013	SIZE A	PART NUMBER:	
PART TO BE FREE OF BURRS			LAYOUT	CT	20MAR2013			
BREAK EDGES MAX	BEND RADIUS MAX	BEND RELIEF MAX	DO NOT SCALE DRAWING			SCALE 1:1 FABRICATION DRAWING SHEET 1 OF 1		

Si7013 USB DONGLE REV 1.0

Size:

Array: 2.08 x 3.5

Part: 2.08 x 0.6

Parts On Array:

5 Parts

Matrix:

1 x 5

Spacing:

NA x 0.0

Array Borders:

Left: 0.0 Right: 0.0

Top: 0.25 Bottom: 0.25

Notes:

Please add 4, 0.125" NP tooling holes located 0.125" from tab corners and 3, 40/120 fiduials to each side of array located 0.25" from tooling holes.