

- The CP210x Evaluation Kits contain the following:
- CP210x evaluation board (CP2104 board pictured as an example)
- required cables (USB or RS232 serial)
- DVD
- Quick Start Guide (this document)

The CP210x USB-to-UART smart-interface family provides a simple solution for connecting UART serial peripheral-based designs to USB using a minimum of components and PCB space. The CP210x devices include a USB 2.0 full-speed function controller, USB transceiver, EEPROM or One-Time Programmable ROM, and one or more UART interfaces.

## CP210X USB-TO-UART EVALUATION KIT QUICK-START GUIDE



### EVALUATION BOARD/KIT IMPORTANT NOTICE

Silicon Laboratories Inc. and its affiliated companies ("Silicon Labs") provides the enclosed evaluation board/kit to the user ("User") under the following conditions:

This evaluation board/kit ("EVB/Kit") is intended for use for ENGINEERING DEVELOPMENT, TESTING, DEMONSTRATION, OR EVALUATION PURPOSES ONLY and is not a finished end-product fit for general consumer use. ANY OTHER USE, RESALE, OR REDISTRIBUTION FOR ANY OTHER PURPOSE IS STRICTLY PROHIBITED. This EVB/Kit is not intended to be complete in terms of required design-, marketing-, and/or manufacturing-related protective considerations, including product safety and environmental measures typically found in end products that incorporate such semiconductor components or circuit boards. As such, persons handling this EVB/Kit must have electronics training and observe good engineering practice standards. As a prototype not available for commercial reasons, this EVB/Kit does not fall within the scope of the European Union directives regarding electromagnetic compatibility, restricted substances (RoHS), recycling (WEEE), FCC, CE or UL, and therefore may not meet the technical requirements of these directives or other related directives.

Should this EVB/Kit not meet the specifications indicated in the User's Guide, the EVB/Kit may be returned within 30 days from the date of delivery for a full refund. THE FOREGOING WARRANTY IS THE EXCLUSIVE WARRANTY MADE BY SILICON LABS TO USER, IS USER'S SOLE REMEDY, AND IS IN LIEU OF ALL OTHER WARRANTIES, EXPRESSED, IMPLIED, OR STATUTORY, INCLUDING ANY WARRANTY OF MERCHANTABILITY, NON-INFRINGEMENT, DESIGN, WORKMANSHIP, OR FITNESS FOR ANY PARTICULAR PURPOSE.

User assumes all responsibility and liability for proper and safe handling of the EVB/Kit. Further, User indemnifies Silicon Labs from all claims arising from User's handling or use of the EVB/Kit. Due to the open construction of the EVB/Kit, it is User's responsibility to take any and all appropriate precautions with regard to electrostatic discharge.

EXCEPT TO THE EXTENT OF THE INDEMNITY SET FORTH ABOVE, NEITHER PARTY SHALL BE LIABLE TO THE OTHER FOR ANY INDIRECT, SPECIAL, INCIDENTAL, OR CONSEQUENTIAL DAMAGES.

Neither Silicon Labs nor User is obligated to perform any activities or conduct any business as a consequence of using the EVB/Kit, and neither party is entitled to any form of exclusivity with respect to the EVB/Kit.

Silicon Labs assumes no liability for applications assistance, customer product design, software performance, or infringement of patents or services described herein.

Please read the User's Guide and, specifically, the Warnings and Restrictions notice in the User's Guide prior to handling the EVB/Kit. This notice contains important safety information about temperatures and voltages. For additional environmental and/or safety information, please contact a Silicon Labs application engineer or visit [www.silabs.com/support/quality](http://www.silabs.com/support/quality).

No license is granted under any patent right or other intellectual property right of Silicon Labs covering or relating to any machine, process, or combination in which the EVB/Kit or any of its components might be or are used.

User's use of this EVB/Kit is conditioned upon acceptance of the foregoing conditions. If User is unwilling to accept these conditions, User may request a refund and return the EVB/Kit to Silicon Labs in its original condition, unopened, with the original packaging and all documentation to:

Mailing Address:  
400 W. Cesar Chavez  
Austin, TX 78701

## A. Getting Started

**1** Insert the DVD included in the kit to install the CP210x-related software. The latest version of this installer can also be found on the Silicon Labs website: [www.silabs.com/interface-software](http://www.silabs.com/interface-software).

OR

| Platform | Installers               | Release Notes                 |
|----------|--------------------------|-------------------------------|
| Windows  | <a href="#">Download</a> | <a href="#">Release Notes</a> |
| Mac      | <a href="#">Download</a> | <a href="#">Release Notes</a> |
| Linux    | <a href="#">Download</a> | <a href="#">Release Notes</a> |

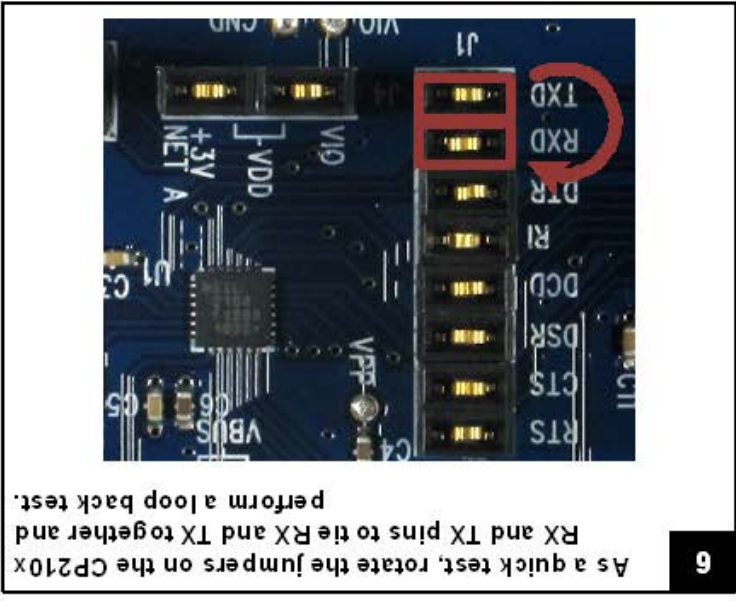
<http://www.silabs.com/interface-software>

**2** After inserting the DVD or downloading the SDK, run the installer. Click **Next** to proceed through the installer steps.

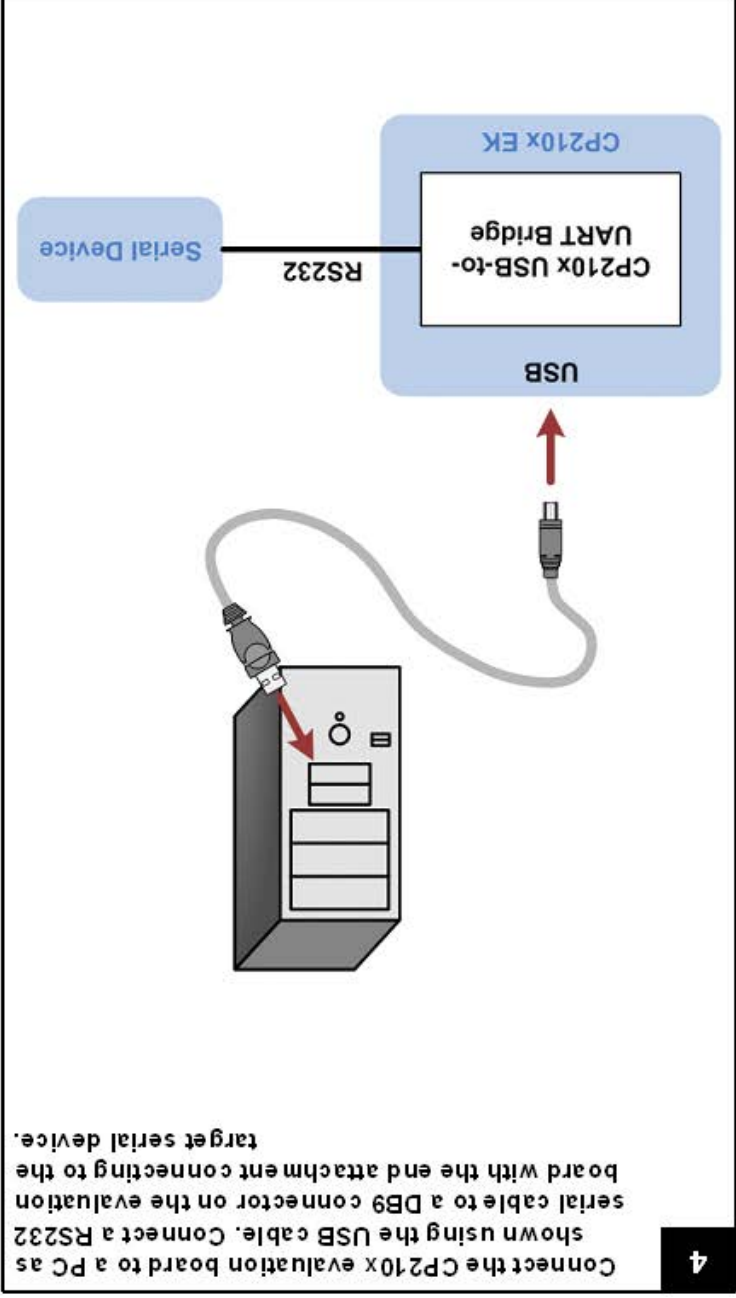
**Note: Windows installation process shown.**

**3** If on a Windows PC, the SDK installer will detect the current operating system and automatically start installing the drivers. Click **Next** to install the driver to the system.

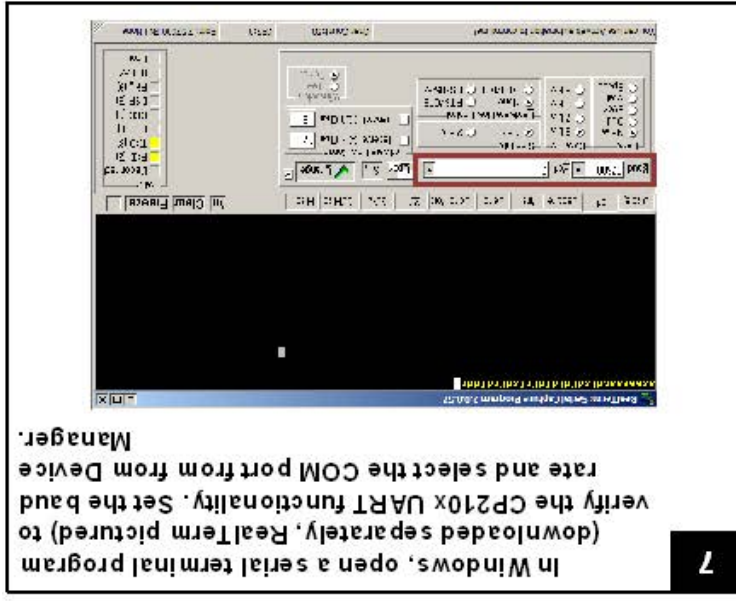




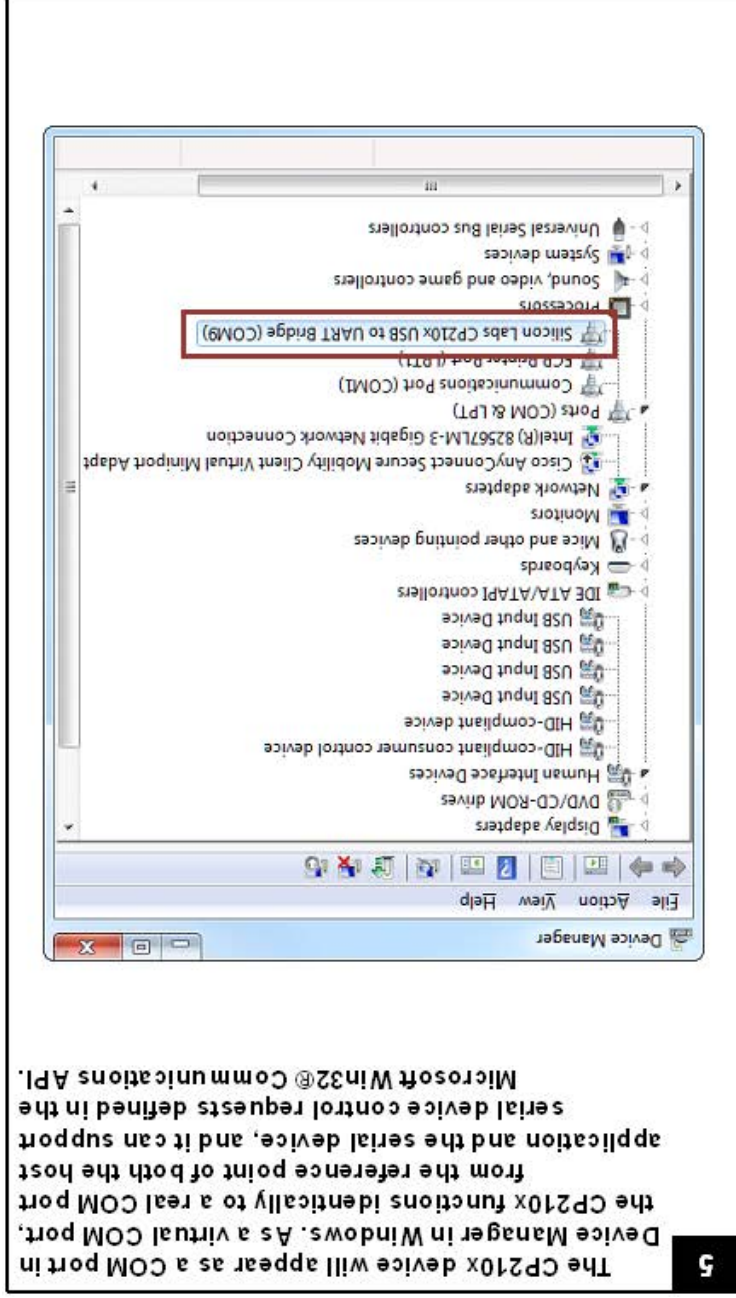
6 As a quick test, rotate the jumpers on the CP210x board with the end attachment connecting to the serial cable to a DB9 connector on the evaluation board with the end attachment connecting to the target serial device.



4 Connect the CP210x evaluation board to a PC as shown using the USB cable. Connect a RS232 serial cable to a DB9 connector on the evaluation board with the end attachment connecting to the target serial device.



7 In Windows, open a serial terminal program (downloaded separately, RealTerm pictured) to verify the CP210x UART functionality. Set the baud rate and select the COM port from from Device Manager.



5 The CP210x device will appear as a COM port in Device Manager in Windows. As a virtual COM port, the CP210x functions identically to a real COM port, from the reference point of both the host application and the serial device, and it can support serial device control requests defined in the Microsoft Win32® Communications API.

Access all CP210x-related material directly from the website or from the SDK installed to `c:\silabs\mcu\cp210x_sdk` by default. Software can be accessed from the Start menu.

- Documentation
- Data Sheets
- Application Notes
- Users Guides
- and more
- AN721: Device Customization Utility
- AN720: Virtual COM Port (VCP) Drivers
- Software
- AN197: Serial COM Port Examples
- AN220: Driver Customization Utility (Windows)
- AN223: GPIO Read/Write Examples

CP210x Software Development Kit

Silicon Labs →

All Programs →

- AN721: CP210x/CP211x Device Customization Guide
- AN571: CP210x Virtual COM Port Interface
- AN220: USB Driver Customization
- AN197: Serial Communications Guide for the CP210x

Application Notes: [www.silabs.com/appnotes](http://www.silabs.com/appnotes)

Software Development Kit: <http://www.silabs.com/interface-software>

VCP Drivers: <http://www.silabs.com/interface-software>

Device Information: <http://www.silabs.com/smartinterface>

Data Sheets: <http://www.silabs.com/smartinterface> → Documentation tab → Data Sheet section

Users Guides: <http://www.silabs.com/smartinterface> → USB to UART Bridges → Documentation tab → User Guides section

MCU Knowledge Base: [www.silabs.com](http://www.silabs.com) → Support → Knowledge Base

Contact an Applications Engineer: [www.silabs.com](http://www.silabs.com) → Support → Contact Technical Support

Quality Documents: [www.silabs.com/quality](http://www.silabs.com/quality)