




LEGAL NOTICE:
SILICON LABORATORIES INC. ("SILICON LABS") AND/OR ITS LICENSORS DO NOT WARRANT THE ACCURACY OR COMPLETENESS OF THIS SCHEMATIC OR ANY INFORMATION CONTAINED WITHIN THIS SCHEMATIC. IT IS PROVIDED "AS-IS" FOR REFERENCE ONLY. SILICON LABS DOES NOT WARRANT THAT THIS DESIGN WILL MEET THE SPECIFICATIONS, BE SUITABLE FOR YOUR APPLICATION OR FIT FOR ANY PARTICULAR PURPOSE, OR WILL OPERATE IN YOUR IMPLEMENTATION. SILICON LABS AND ITS LICENSORS DO NOT WARRANT THAT THE DESIGN IMPLIED IN THIS SCHEMATIC IS PRODUCTION-WORTHY. YOU SHOULD COMPLETELY VALIDATE AND TEST YOUR DESIGN IMPLEMENTATION TO CONFIRM SYSTEM FUNCTIONALITY FOR YOUR APPLICATION.

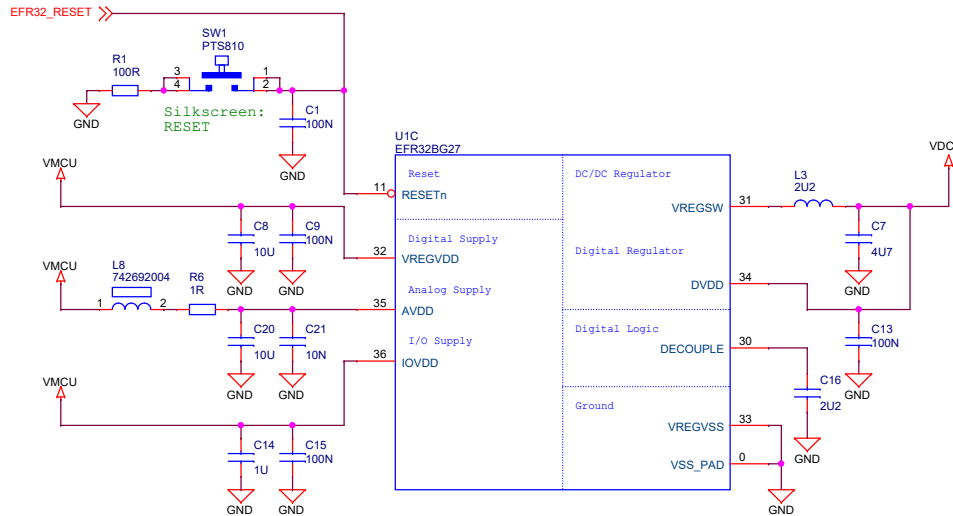


EFR32BG27 +8 dBm DK	
Board Function	Page
Title Page	1
EFR32BG27	2
Sensors and Peripherals	3
Power and Mini Simplicity	4
On-board Debugger	5

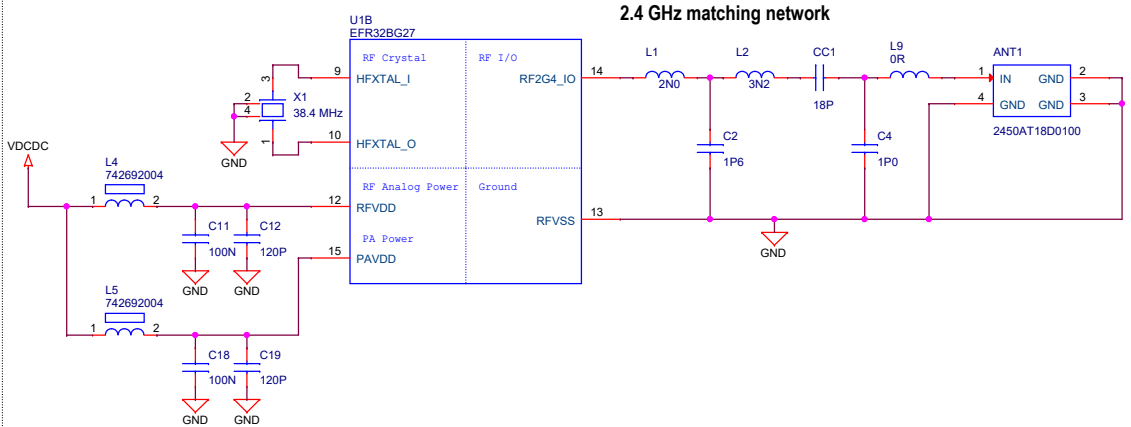
Revision History	
Rev.	Description
A00	Initial Release
A01	Updated matching network
A02	Updated antenna matching network

 SILICON LABS		Board Name	
		EFR32BG27 +8 dBm DK	
Designed PEP		Approved RGU	
Size A3	Sheet Modified Date Wednesday, April 19, 2023		Revision A02
COPYRIGHT SILICON LABORATORIES INC. 2021 CONFIDENTIAL – SUBJECT TO TERMS OF USE			Sheet 1 of 5

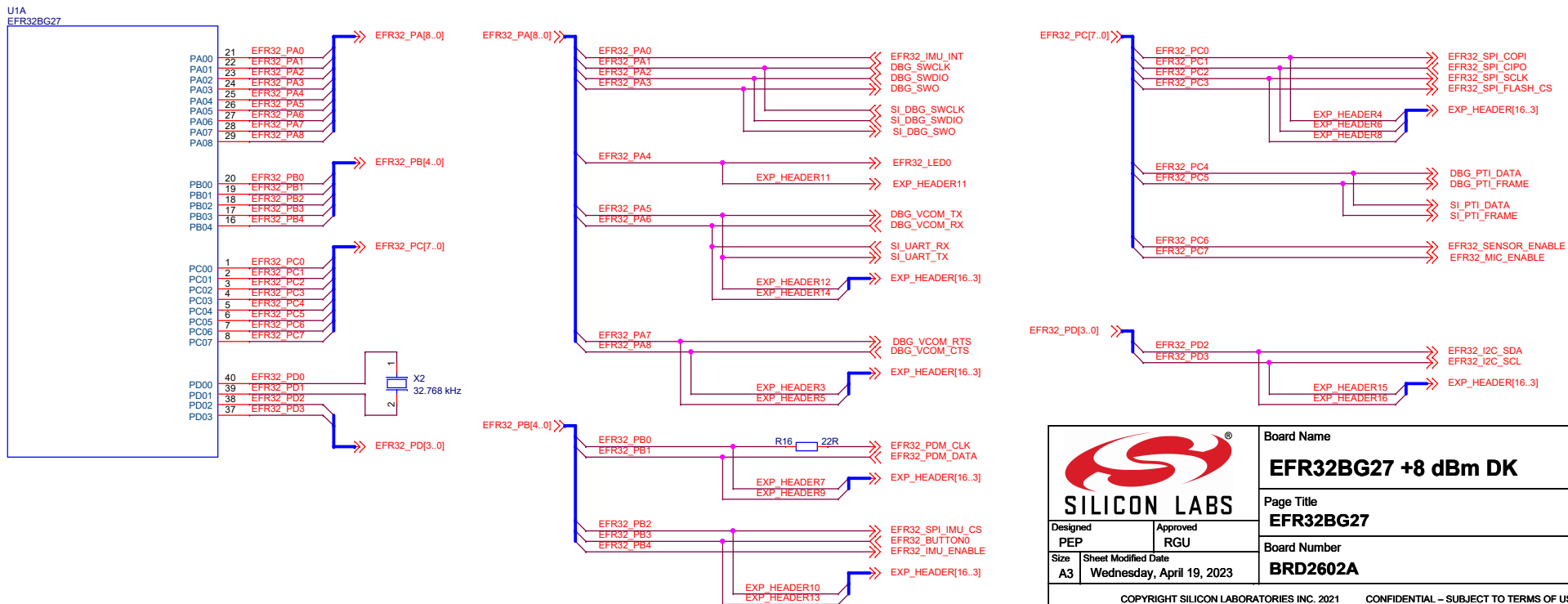
EFR32BG27 Power Section




EFR32BG27 RF Section

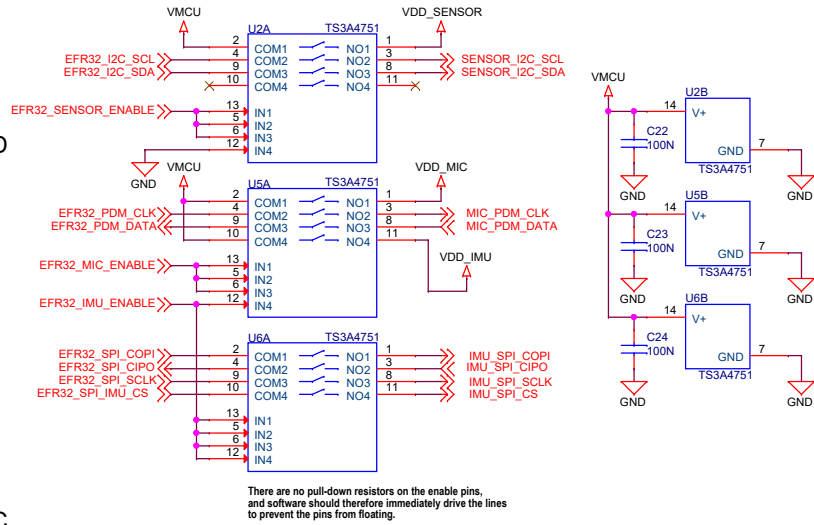


EFR32BG27 IOs & Signal Assignments

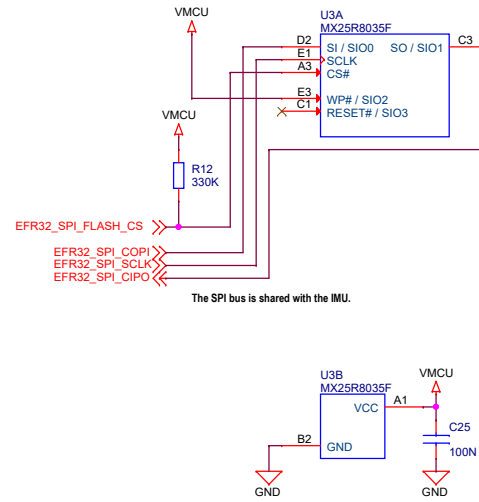


		Board Name	
		EFR32BG27 +8 dBm DK	
Designed PEP		Page Title	
Size A3		EFR32BG27	
Sheet Modified Date Wednesday, April 19, 2023		Board Number	
		BRD2602A	
		Revision	
		A02	
		Sheet	
		2 of 5	

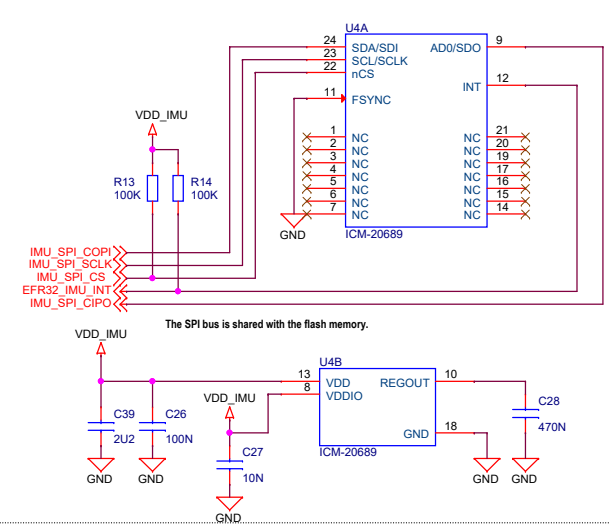
Sensor Power/Isolation



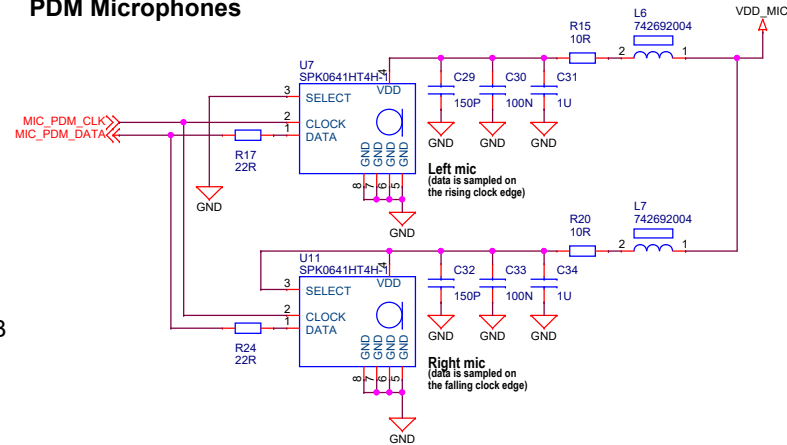
SPI Flash



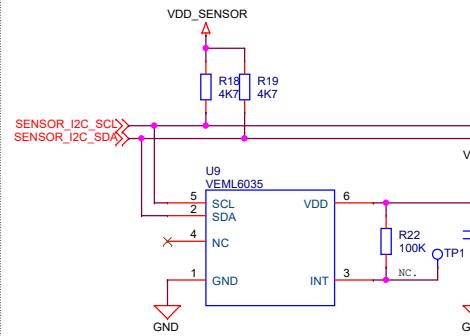
6-axis Inertial Sensor (IMU)



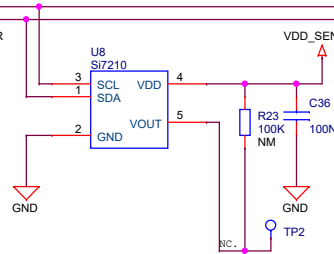
PDM Microphones



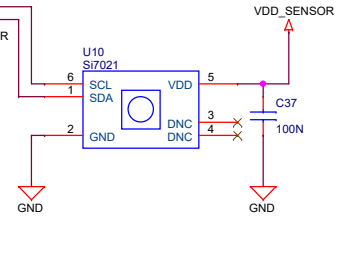
Ambient Light Sensor



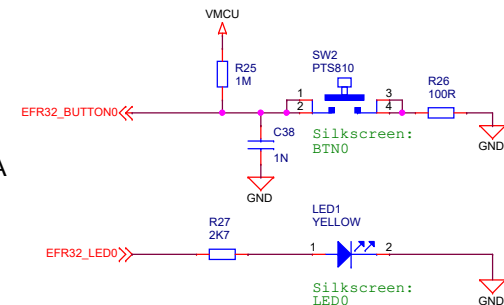
Hall-effect Sensor



RH/Temp Sensor

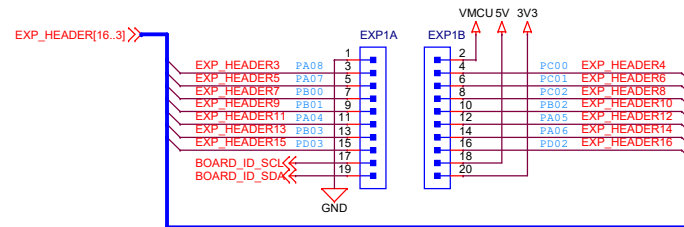


Push Button & LED



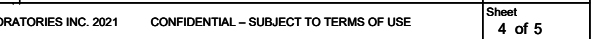
Breakout Pads - EXP Header

All signals routed to the EXP header are used on the board as well. Take care to avoid signal conflicts (see page 2 for signal assignments).



		Board Name	
		EFR32BG27 +8 dBm DK	
Designed PEP		Page Title	
Size A3		Sensors and Peripherals	
Sheet Modified Date		Board Number	
Wednesday, April 19, 2023		BRD2602A	
Approved RGU		Revision	
		A02	
COPYRIGHT SILICON LABORATORIES INC. 2021		CONFIDENTIAL - SUBJECT TO TERMS OF USE	
		Sheet 3 of 5	

A



D



B



A

