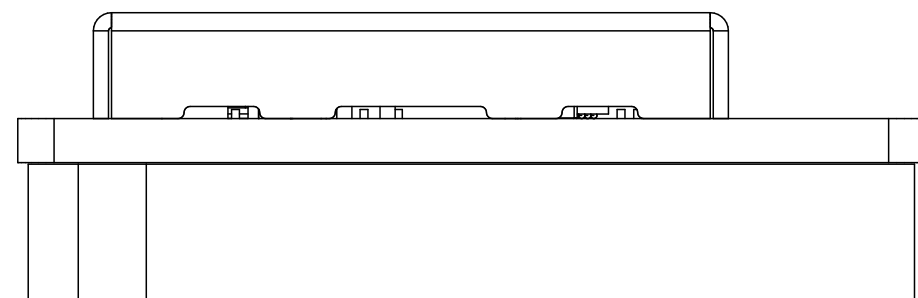
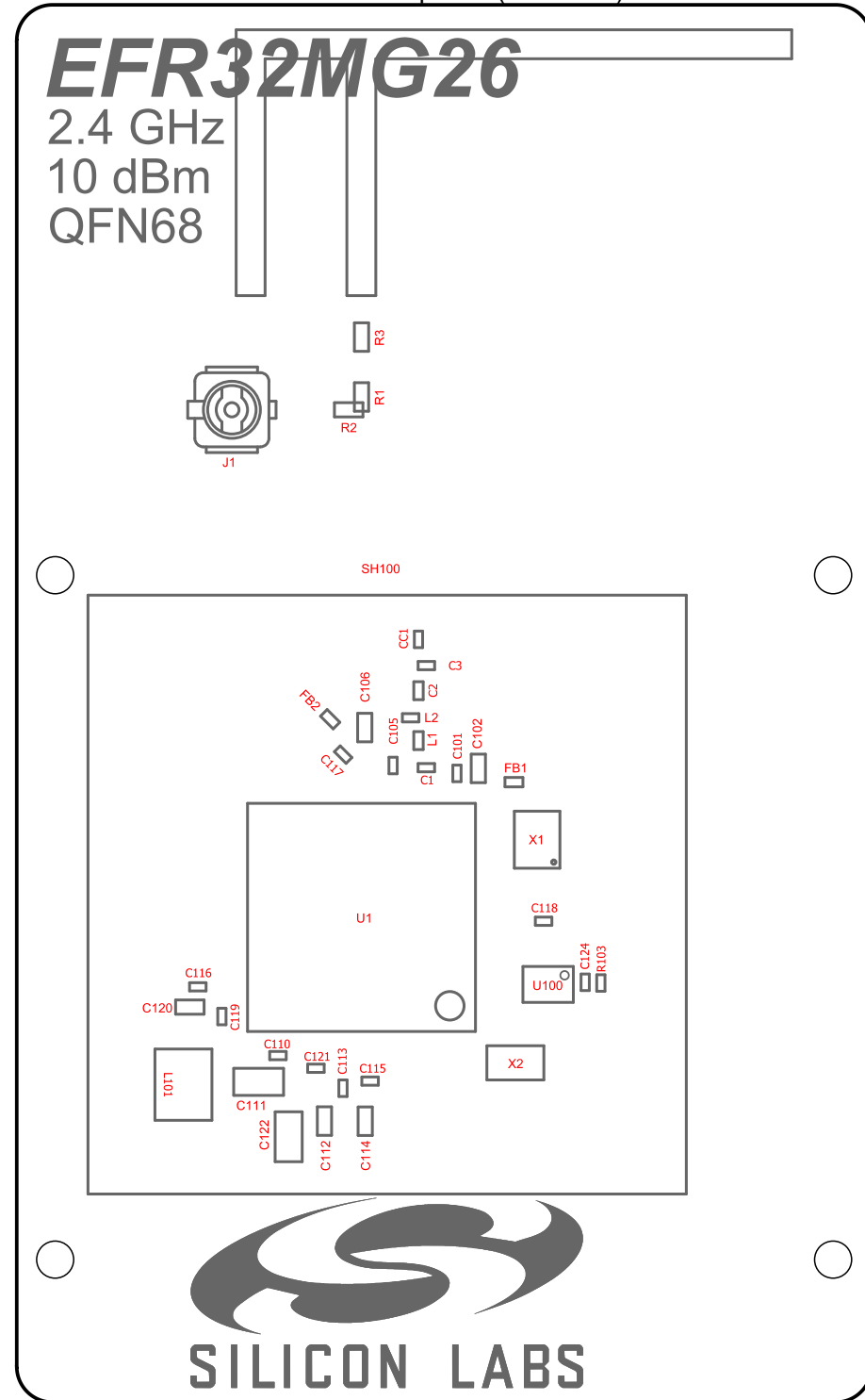
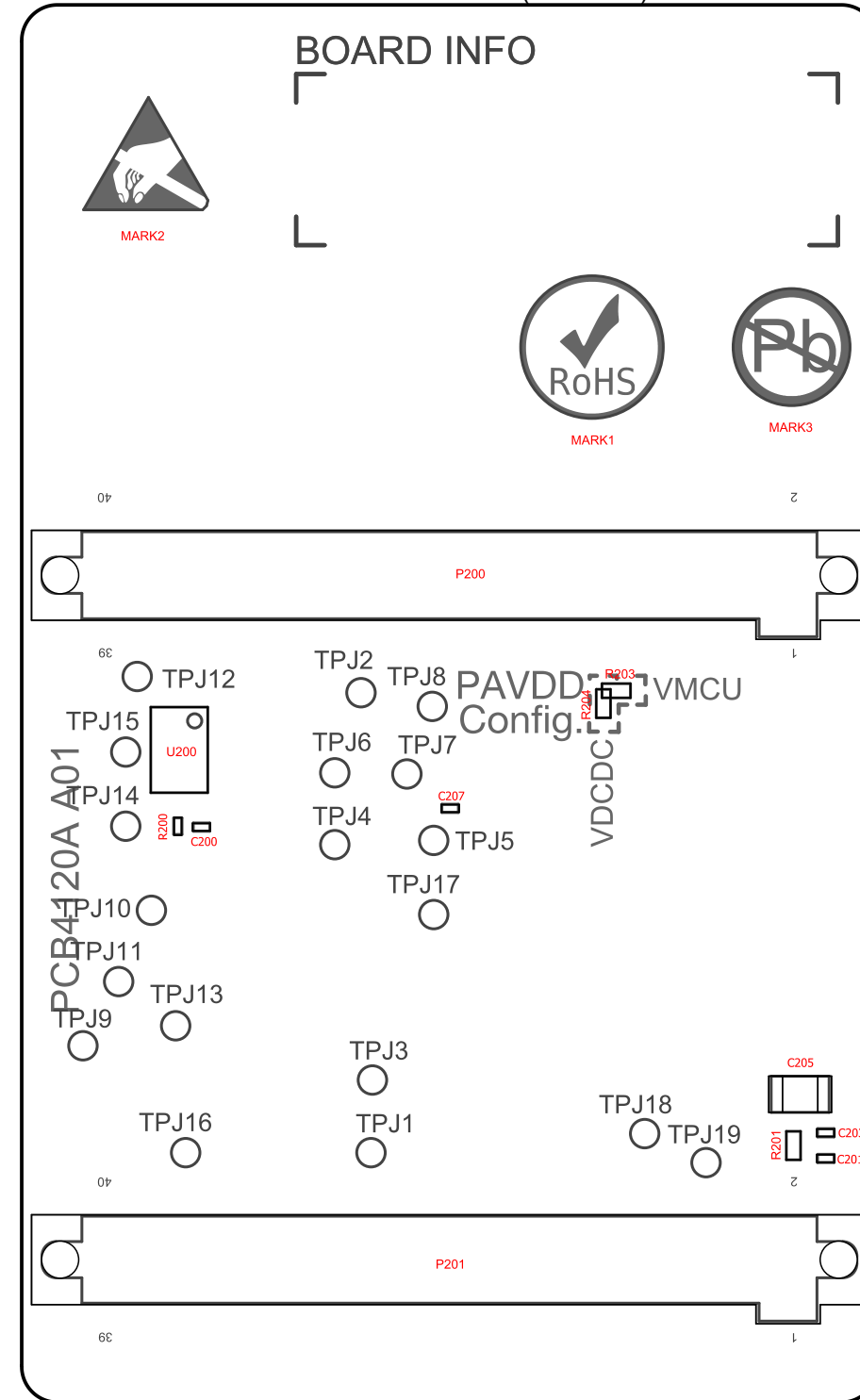



View from Top side (Scale 4:1)



View from Front side (Scale 4:1)

View from Bottom side (Scale 4:1)



 <b>SILICON LABS</b>		<b>BOARD NAME:</b> EFR32MG26 Radio Board QFN68 10 dBm		
		<b>DESIGN:</b> SZL	<b>DOCUMENT TITLE:</b> Assembly Drawings	
		<b>APPROVED:</b> RGU		
Unless otherwise specified Dimensions are in Millimeters Scale 4:1	<b>SIZE:</b> A3	<b>MODIFIED DATE:</b> 2023. 09. 08.	<b>PCB No:</b> PCB4120A	<b>REVISION:</b> A01 --
COPYRIGHT SILICON LABORATORIES INC. 2022		CONFIDENTIAL - SUBJECT TO TERMS OF USE		<b>SHEET:</b> 1 OF 1