



EFR32 Mighty Gecko Radio Board
2.4 GHz 19 dBm, VMCU to PAVDD


Board Function	Page
Title Page	1
RF, Antenna & Power	2
EFR32 Signal Assignments	3
WSTK Connectors & Board ID	4

LEGAL NOTICE:
SILICON LABORATORIES INC. ("SILICON LABS") AND/OR ITS LICENSORS DO NOT WARRANT THE ACCURACY OR COMPLETENESS OF THIS SCHEMATIC OR ANY INFORMATION CONTAINED WITHIN THIS SCHEMATIC. IT IS PROVIDED "AS-IS" FOR REFERENCE ONLY. SILICON LABS DOES NOT WARRANT THAT THIS DESIGN WILL MEET THE SPECIFICATIONS, BE SUITABLE FOR YOUR APPLICATION OR FIT FOR ANY PARTICULAR PURPOSE, OR WILL OPERATE IN YOUR IMPLEMENTATION. SILICON LABS AND ITS LICENSORS DO NOT WARRANT THAT THE DESIGN IMPLIED IN THIS SCHEMATIC IS PRODUCTION-WORTHY. YOU SHOULD COMPLETELY VALIDATE AND TEST YOUR DESIGN IMPLEMENTATION TO CONFIRM SYSTEM FUNCTIONALITY FOR YOUR APPLICATION.

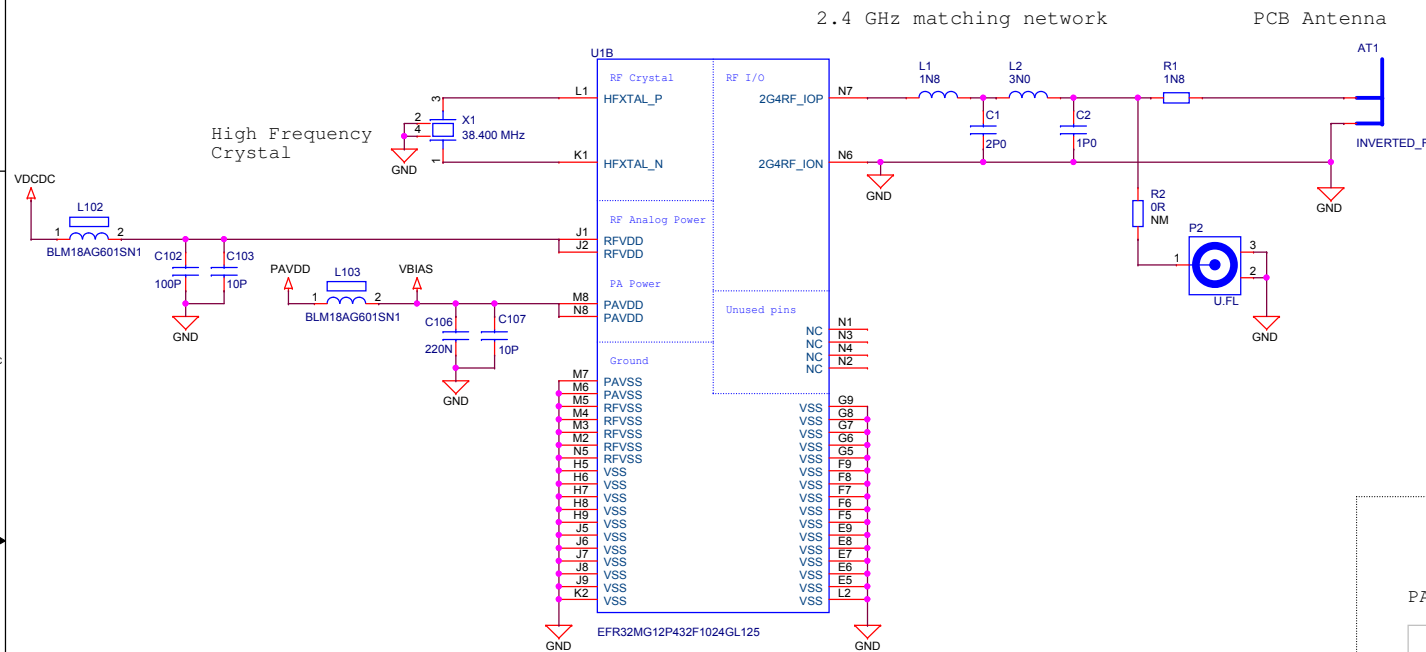


Revision History	
Rev.	Description
A00	Initial version.
A01	Updated EFR32 chip revision and 32 kHz crystal part number.
A02	Fixing EFR32 pin names; Adding antenna tuning.

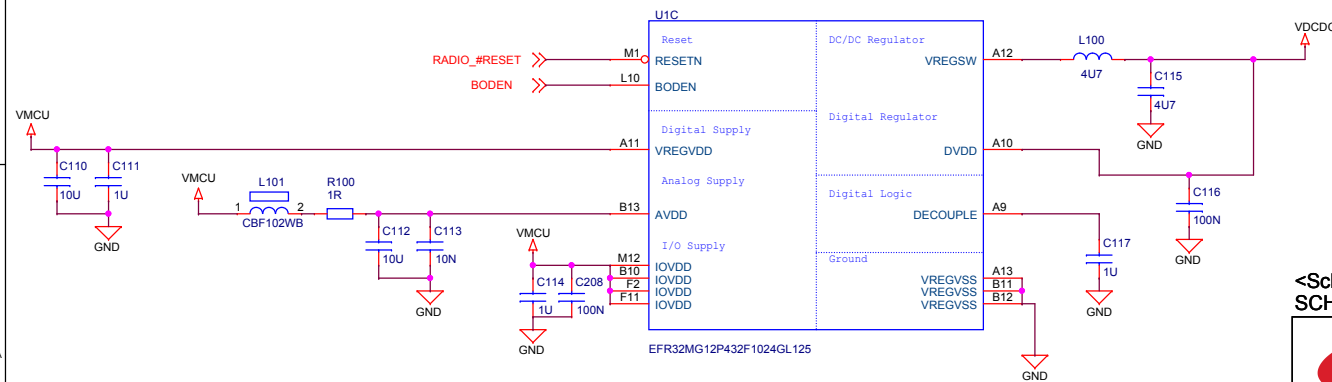
<Schematic Path>
SCHEMATIC1

 SILICON LABS		Schematic Title EFR32MG12 2.4 GHz Radio Board	
		Page Title Title Page	
Designed: TAB	Approved: <OrgAddr2>	Document number BRD4161A	Revision A02
Size A3	BOM Doc No: <Cage Code>	Sheet Created Date Monday, April 02, 2012	Sheet Modified Date Monday, January 30, 2017
Design Created Date: Monday, April 02, 2012		Sheet 1 of 4	

Antenna & Radio Interface

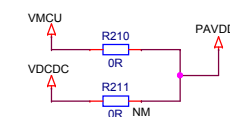


Power & Decoupling

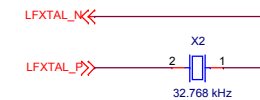


PAVDD Configuration

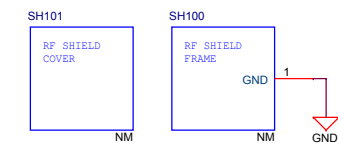
	Power Config 1 VMCU to PAVDD	Power Config DCDC to PAVDD
R210	Mount	Not mount
R211	Not mount	Mount



Low Frequency Crystal



RF Shielding



<Schematic Path>
SCHEMATIC1



Designed: TAB		Approved: <OrgAddr2>
Size A3	BOM Doc No: <Cage Code>	
Design Created Date: Monday, April 02, 2012		

	Schematic Title
1	1.1
2	2.1
3	3.1
4	4.1
5	5.1
6	6.1
7	7.1
8	8.1
9	9.1
10	10.1
11	11.1
12	12.1
13	13.1
14	14.1
15	15.1
16	16.1
17	17.1
18	18.1
19	19.1
20	20.1
21	21.1
22	22.1
23	23.1
24	24.1
25	25.1
26	26.1
27	27.1
28	28.1
29	29.1
30	30.1
31	31.1
32	32.1
33	33.1
34	34.1
35	35.1
36	36.1
37	37.1
38	38.1
39	39.1
40	40.1
41	41.1
42	42.1
43	43.1
44	44.1
45	45.1
46	46.1
47	47.1
48	48.1
49	49.1
50	50.1
51	51.1
52	52.1
53	53.1
54	54.1
55	55.1
56	56.1
57	57.1
58	58.1
59	59.1
60	60.1
61	61.1
62	62.1
63	63.1
64	64.1
65	65.1
66	66.1
67	67.1
68	68.1
69	69.1
70	70.1
71	71.1
72	72.1
73	73.1
74	74.1
75	75.1
76	76.1
77	77.1
78	78.1
79	79.1
80	80.1
81	81.1
82	82.1
83	83.1
84	84.1
85	85.1
86	86.1
87	87.1
88	88.1
89	89.1
90	90.1
91	91.1
92	92.1
93	93.1
94	94.1
95	95.1
96	96.1
97	97.1
98	98.1
99	99.1
100	100.1

EFR32MG12 2.4 GHz Radio Board

Page Title

RF, Antenna & Power

Document number
BRD4161A

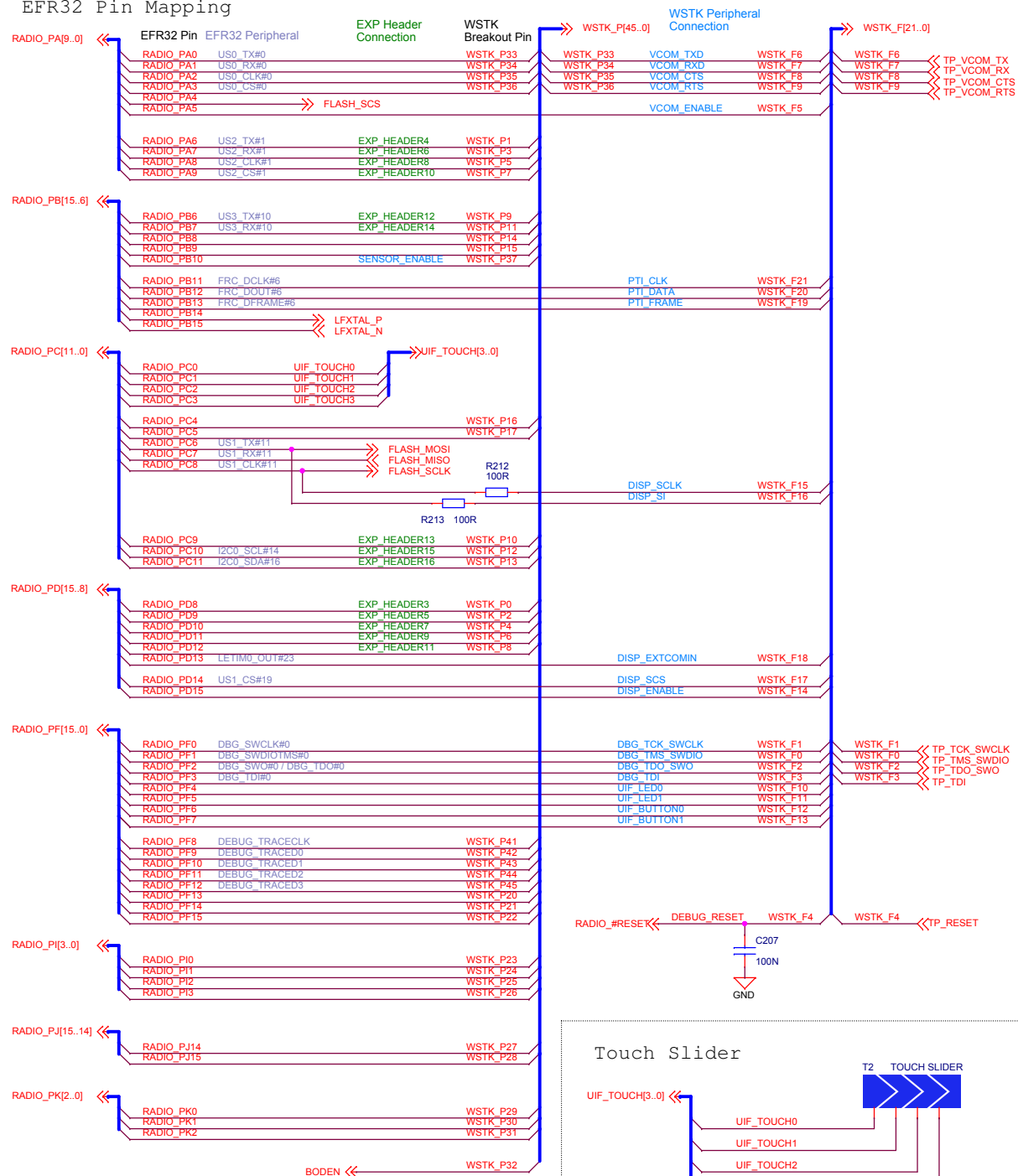
Revision
A02

Sheet Created Date	Monday, April 02, 2012
--------------------	------------------------

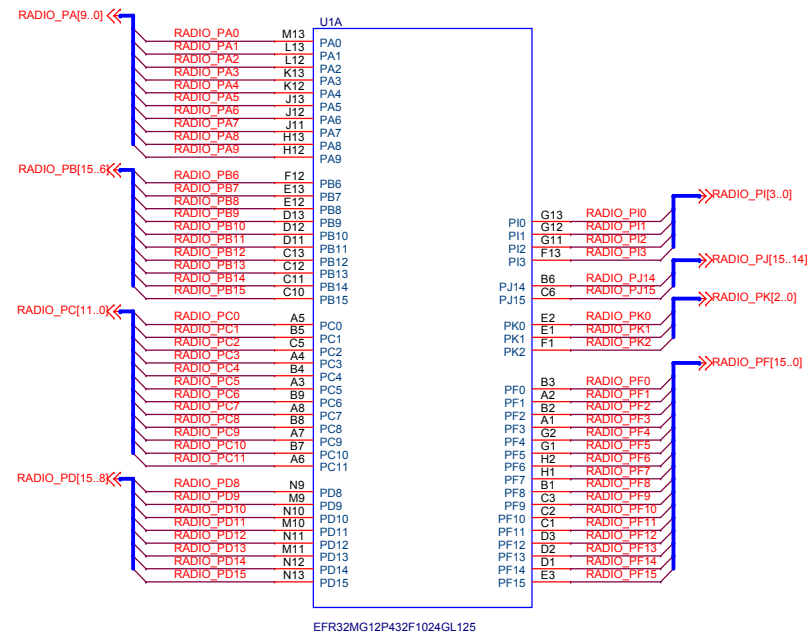
Sheet Modified Date	Monday, January 30, 2017
---------------------	--------------------------

Sheet
2 of 4

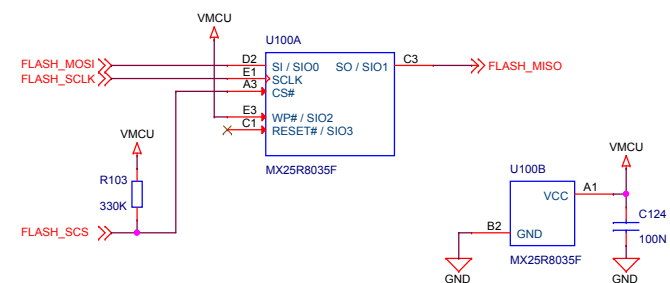
EFR32 Pin Mapping



EFR32 I/O Port Pins



Serial Flash

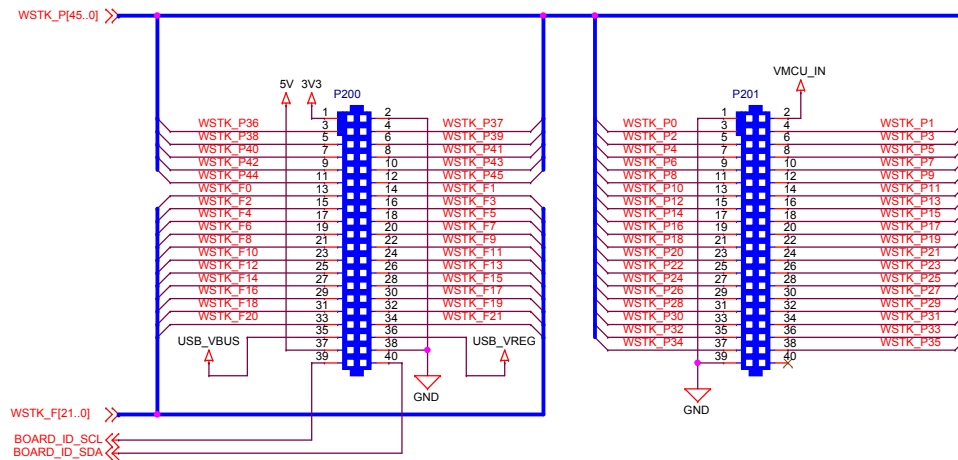


<Schematic Path>
SCHEMATIC1

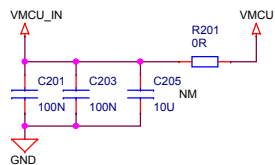


Designed: TAB		Approved: <OrgAddr2>		EFR32 I/O Port Connections			
Size A3		BOM Doc No: <Cage Code>		Document number BRD4161A			Revision A02
Design Created Date: Monday, April 02, 2012		Sheet Created Date Wednesday, April 11, 2012		Sheet Modified Date Monday, January 30, 2017			Sheet 3 of 4

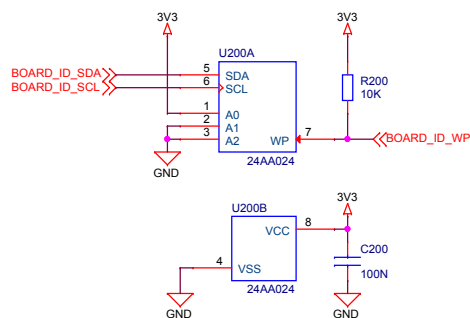
WSTK Connectors



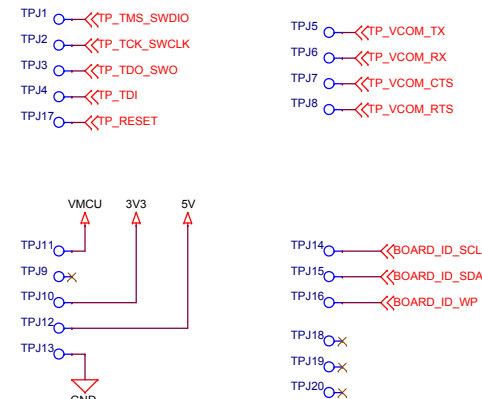
WSTK Power Decoupling



Board Identification



Test Points



<Schematic Path>
SCHEMATIC1

		Schematic Title	
		EFR32MG12 2.4 GHz Radio Board	
Designed: TAB		Page Title	
Size A3		WSTK Connectors & Board ID	
BOM Doc No: <Cage Code>		Document number	
Design Created Date: Monday, April 02, 2012		BRD4161A	
Approved: <OrgAddr2>		Revision	
Sheet Created Date: Tuesday, April 03, 2012		A02	
Sheet Modified Date: Monday, January 30, 2017		Sheet 4 of 4	