



**EFR32 Mighty Gecko Radio Board**  
2.4 GHz 10 dBm, VDCDC to PAVDD


Board Function	Page
Title Page	1
RF, Antenna & Power	2
EFR32 Signal Assignments	3
WSTK Connectors & Board ID	4

LEGAL NOTICE:  
SILICON LABORATORIES INC. ("SILICON LABS") AND/OR ITS LICENSORS DO NOT WARRANT THE ACCURACY OR COMPLETENESS OF THIS SCHEMATIC OR ANY INFORMATION CONTAINED WITHIN THIS SCHEMATIC. IT IS PROVIDED "AS-IS" FOR REFERENCE ONLY. SILICON LABS DOES NOT WARRANT THAT THIS DESIGN WILL MEET THE SPECIFICATIONS, BE SUITABLE FOR YOUR APPLICATION OR FIT FOR ANY PARTICULAR PURPOSE, OR WILL OPERATE IN YOUR IMPLEMENTATION. SILICON LABS AND ITS LICENSORS DO NOT WARRANT THAT THE DESIGN IMPLIED IN THIS SCHEMATIC IS PRODUCTION-WORTHY. YOU SHOULD COMPLETELY VALIDATE AND TEST YOUR DESIGN IMPLEMENTATION TO CONFIRM SYSTEM FUNCTIONALITY FOR YOUR APPLICATION.

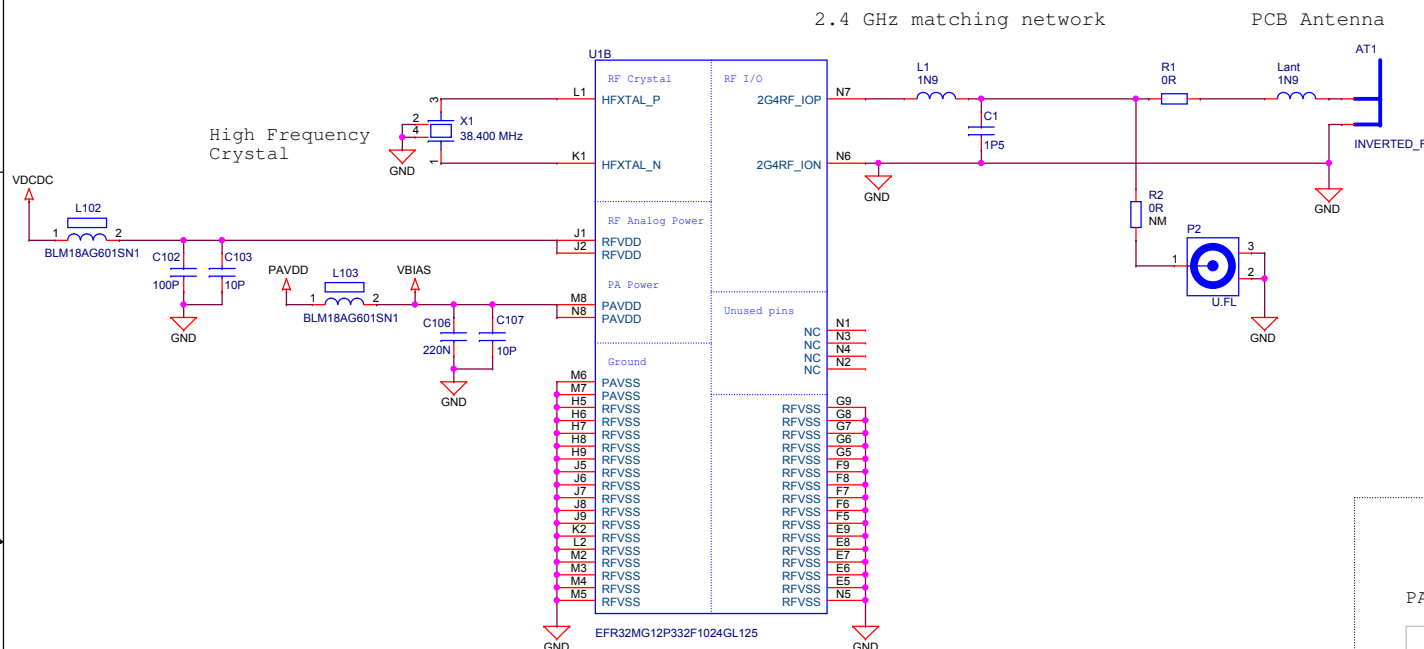


Revision History	
Rev.	Description
A00	Initial version.
A01	Updated EFR32 chip revision and 32 kHz crystal part number.

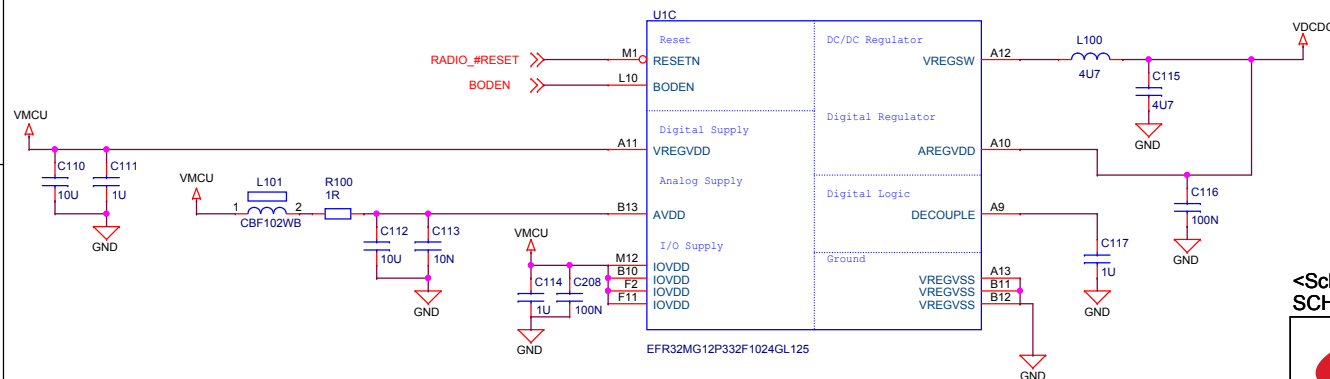
<Schematic Path>  
SCHEMATIC1

 <b>SILICON LABS</b>		Schematic Title <b>EFR32MG12 2.4 GHz Radio Board</b>	
		Page Title <b>Title Page</b>	
Designed: TAB	Approved: <OrgAddr2>	Document number <b>BRD4162A</b>	Revision A01
Size A3	BOM Doc No: <Cage Code>	Sheet Created Date Monday, April 02, 2012	Sheet Modified Date Thursday, November 17, 2016
Design Created Date: Monday, April 02, 2012		Sheet 1 of 4	

## Antenna & Radio Interface



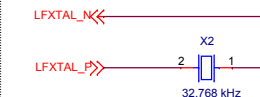
## Power & Decoupling



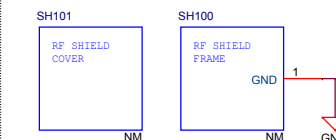
### PAVDD Configuration

	Power Config 1 VMCU to PAVDD	Power Config 2 DCDC to PAVDD
R210	Mount	Not mount
R211	Not mount	Mount

### Low Frequency Crystal



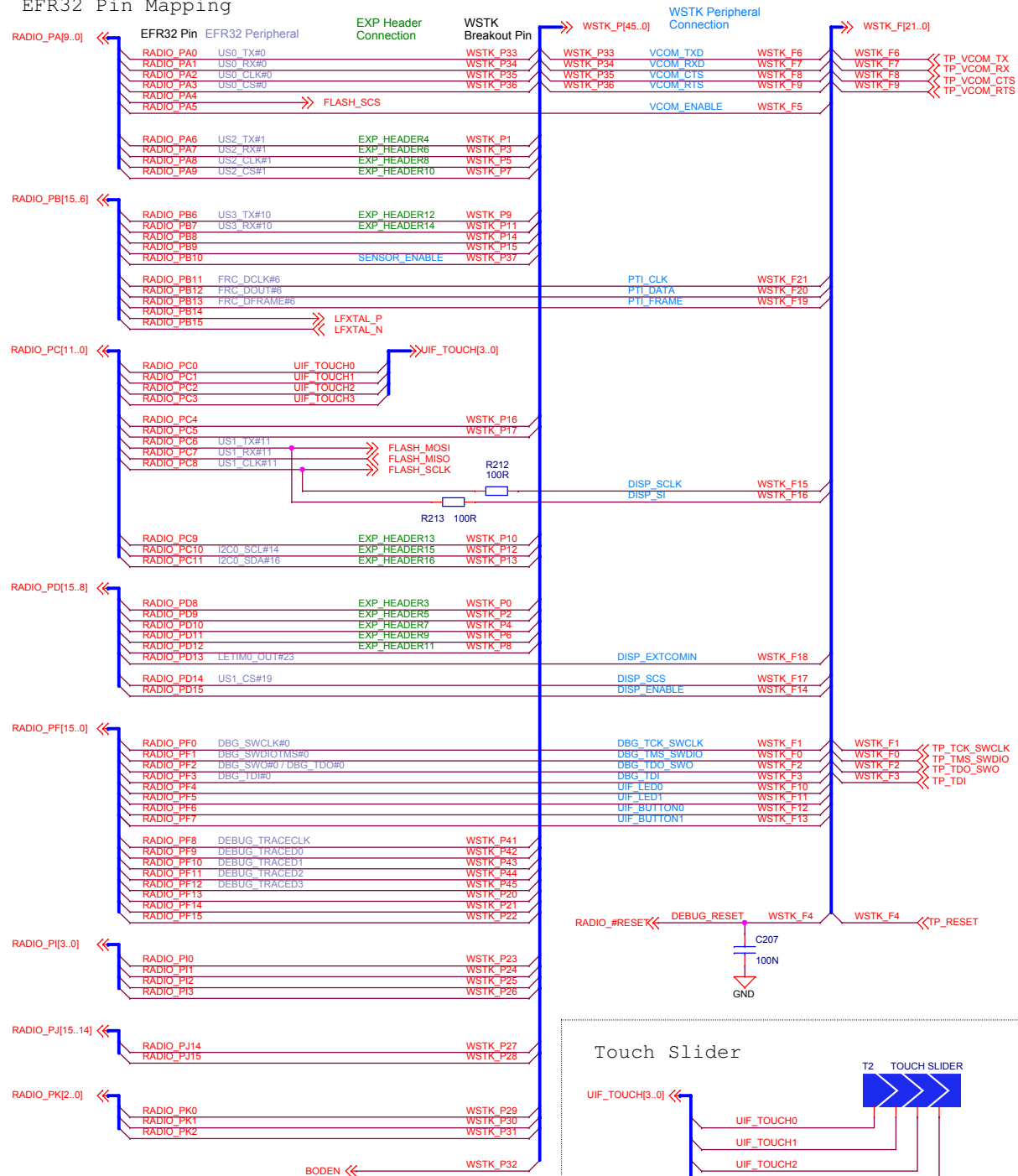
### RF Shielding



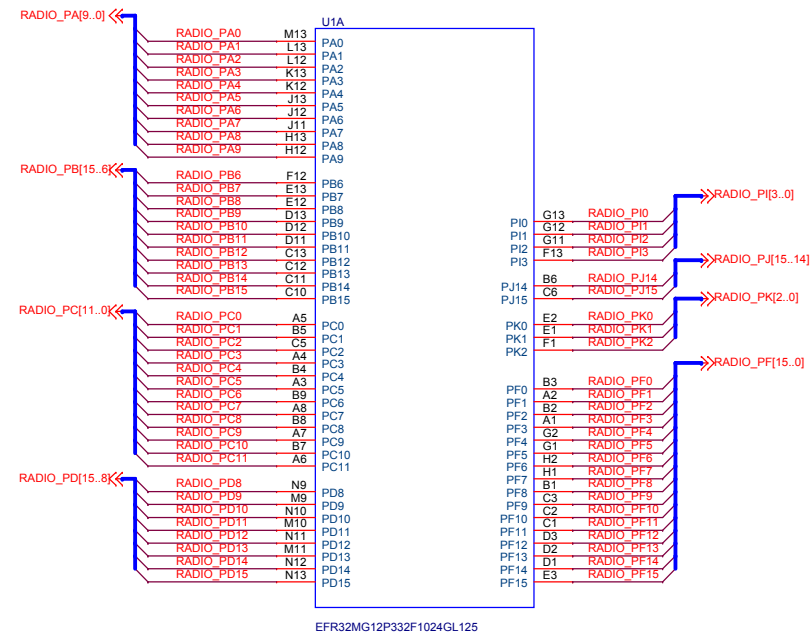
<Schematic Path>  
SCHEMATIC1

		Schematic Title	
EFR32MG12 2.4 GHz Radio Board		Page Title	
RF, Antenna & Power		Document number	
BRD4162A		Revision	
A01		Sheet	
2 of 4		Sheet Created Date	
Monday, April 02, 2012		Sheet Modified Date	
Thursday, November 17, 2016		Design Created Date	
Monday, April 02, 2012		BOM Doc No:	
<Cage Code>		Approved:	
<OrgAddr>		Approved:	
<OrgAddr>		Approved:	

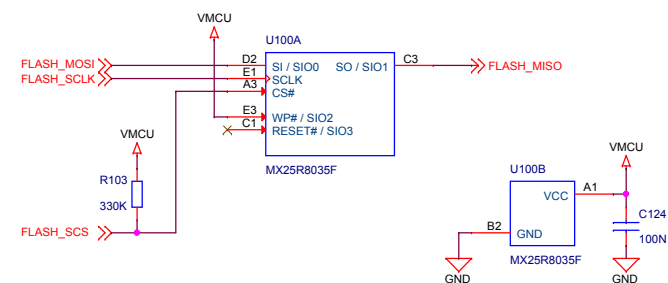
## EFR32 Pin Mapping



## EFR32 I/O Port Pins



## Serial Flash



<Schematic Path>  
SCHEMATIC1



Designed: TAB		Approved: <OrgAddr2>
Size A3	BOM Doc No: <Cage Code>	
Design Created Date: Monday, April 02, 2012		

Schematic Title
-----------------

## EFR32MG12 2.4 GHz Radio Board

Page Title

## EFR32 I/O Port Connections

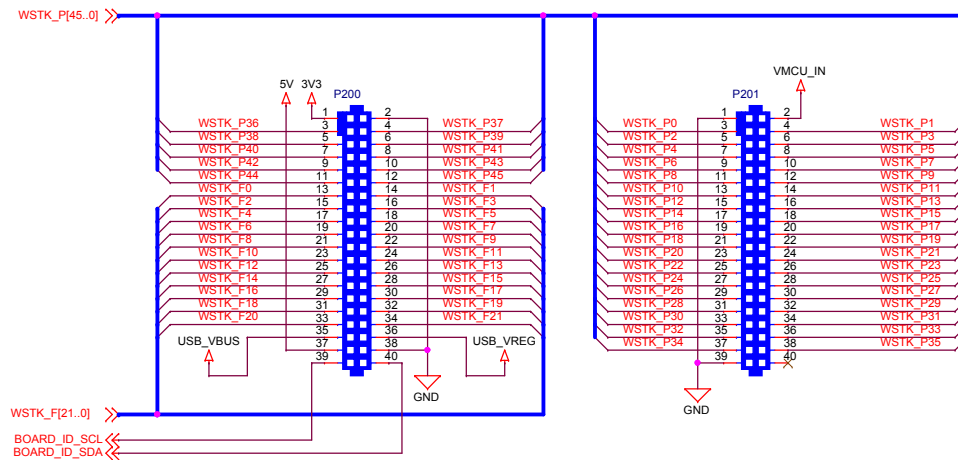
Document number  
**BRD4162A**

Sheet Created Date	Wednesday, April 11, 2012
--------------------	---------------------------

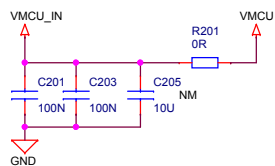
Sheet Modified Date	Thursday, November 17, 2016
---------------------	-----------------------------

Revision	A01
Sheet	3 of

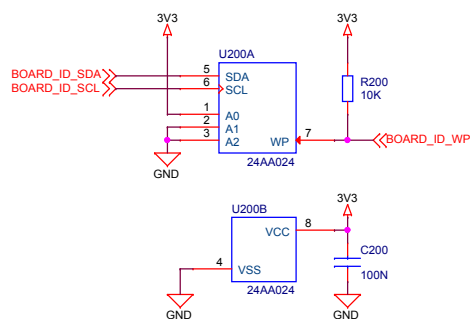
## WSTK Connectors



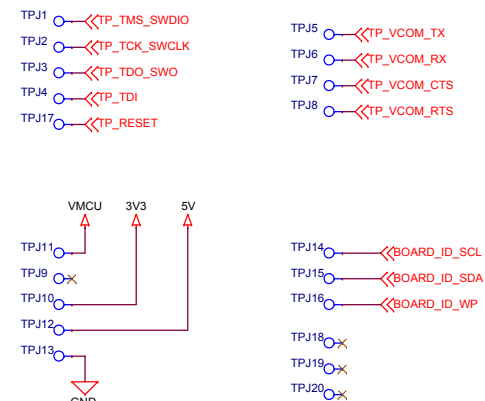
## WSTK Power Decoupling




## Board Identification



## Test Points



<Schematic Path>  
SCHEMATIC1

		Schematic Title	
		<b>EFR32MG12 2.4 GHz Radio Board</b>	
Designed:		Page Title	
TAB		<b>WSTK Connectors &amp; Board ID</b>	
Size	BOM Doc No:	Document number	Revision
A3	<Cage Code>	<b>BRD4162A</b>	<b>A01</b>
Design Created Date:		Sheet Created Date	Sheet Modified Date
Monday, April 02, 2012		Tuesday, April 03, 2012	Thursday, November 17, 2016
		Sheet	4 of 4