



EFR32xG21 Radio Board
2.4 GHz 0/10dBm, with EFP

| Board Function | Page |
|----------------------------|------|
| Title Page | 1 |
| RF, Antenna & Power | 2 |
| EFR32 Signal Assignments | 3 |
| WSTK Connectors & Board ID | 4 |

LEGAL NOTICE:
SILICON LABORATORIES INC. ("SILICON LABS") AND/OR ITS LICENSORS DO NOT WARRANT THE ACCURACY OR COMPLETENESS OF THIS SCHEMATIC OR ANY INFORMATION CONTAINED WITHIN THIS SCHEMATIC. IT IS PROVIDED "AS-IS" FOR REFERENCE ONLY. SILICON LABS DOES NOT WARRANT THAT THIS DESIGN WILL MEET THE SPECIFICATIONS, BE SUITABLE FOR YOUR APPLICATION OR FIT FOR ANY PARTICULAR PURPOSE, OR WILL OPERATE IN YOUR IMPLEMENTATION. SILICON LABS AND ITS LICENSORS DO NOT WARRANT THAT THE DESIGN IMPLIED IN THIS SCHEMATIC IS PRODUCTION-WORTHY. YOU SHOULD COMPLETELY VALIDATE AND TEST YOUR DESIGN IMPLEMENTATION TO CONFIRM SYSTEM FUNCTIONALITY FOR YOUR APPLICATION.



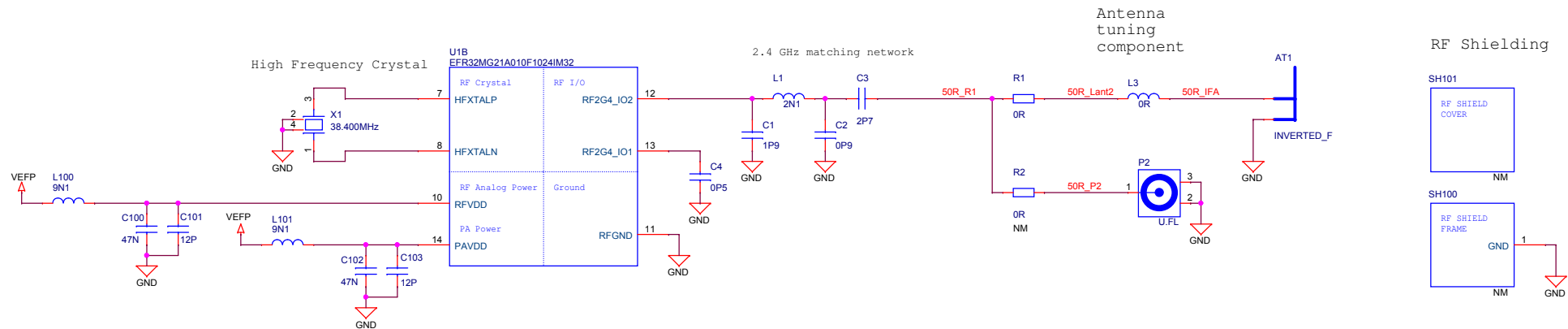
PCB4179B

Revision History

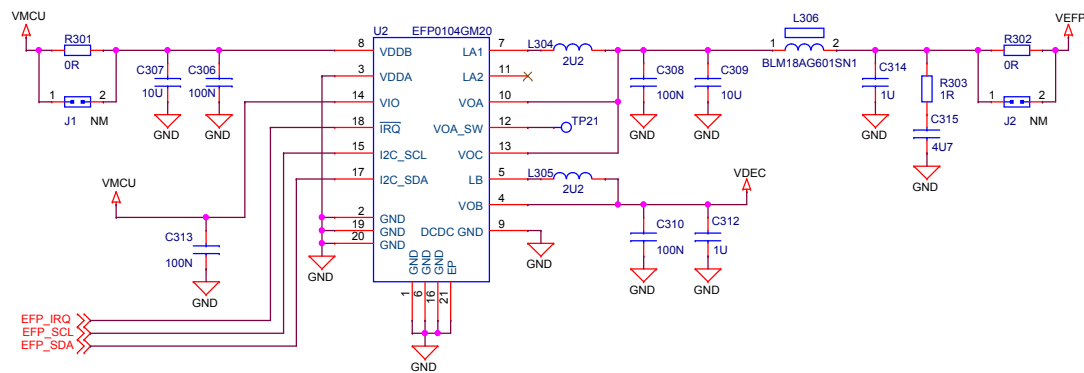
| Rev. | Description |
|------|--|
| A00 | Init. rev. based on BRD4179A Rev. A00. Xtal, pinmap, RF and EFP updates. |
| A01 | 0/10dBm match. Improved filter for EFP out. No C105. Fixed L305, L304 OPN. |
| A02 | Updated EFP01 to IC rev. D. |
| | |
| | |
| | |
| | |
| | |
| | |
| | |

| | | | |
|-----------------------------------|--|--|--|
| | | Schematic Title EFR32xG21 2.4 GHz 0/10 dBm Radio Board with EFP | |
| Designed: PMI | | Page Title Title Page | |
| Size A3 | | Document number BRD4179B | Revision A02 |
| BOM Doc No: <Cage Code> | | Design Created Date: Friday, November 03, 2017 | Sheet Created Date Friday, November 03, 2017 |
| | | Sheet Modified Date Friday, January 10, 2020 | Sheet 1 of 4 |

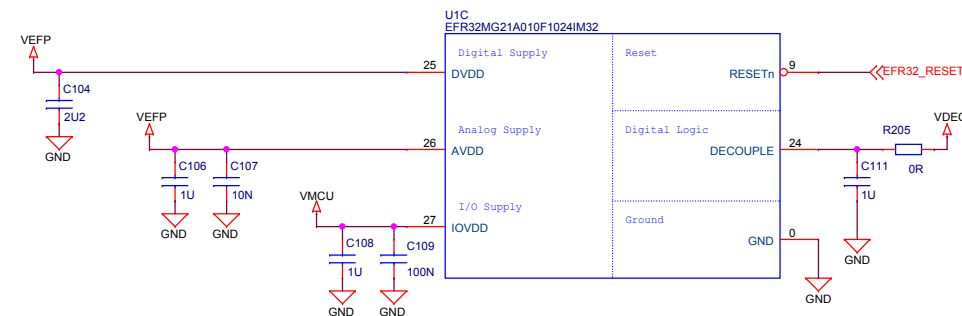
Antenna & Radio Interface




EFP01 DCDC

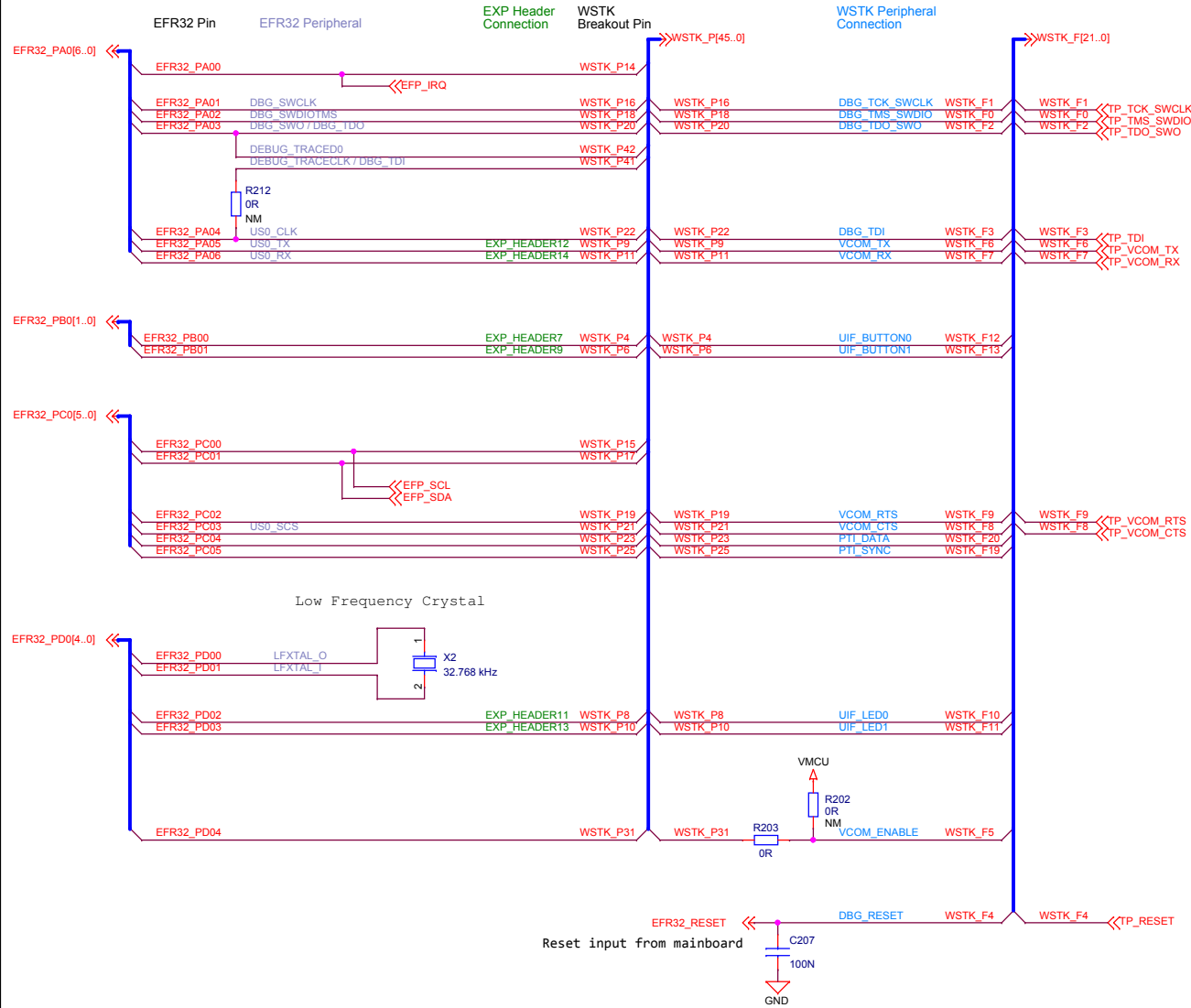


Power & Decoupling

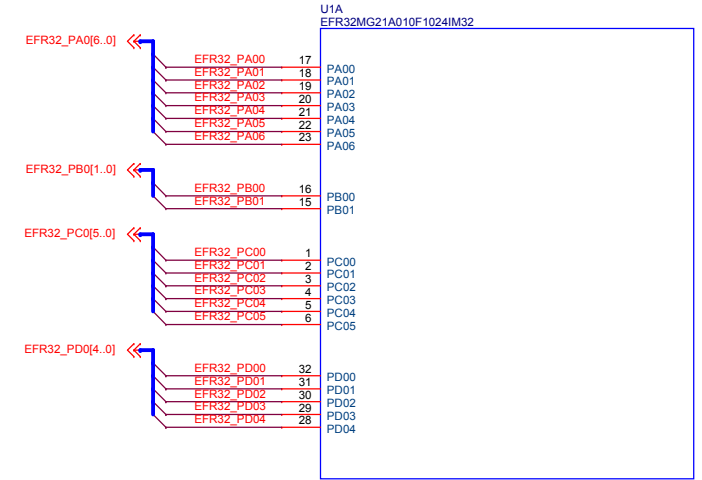



| | | | |
|---|--|---|--|
|  | | Schematic Title | |
| | | EFR32xG21 2.4 GHz 0/10 dBm Radio Board with EFP | |
| Page Title | | RF, Antenna & Power | |
| Designed: PMI | | Approved: TAB | |
| Size A3 | | BOM Doc No: <Cage Code> | |
| Design Created Date: Friday, November 03, 2017 | | Document number BRD4179B | |
| Sheet Created Date: Friday, November 03, 2017 | | Revision A02 | |
| Sheet Modified Date: Friday, January 10, 2020 | | Sheet 2 of 4 | |

Pin Mapping

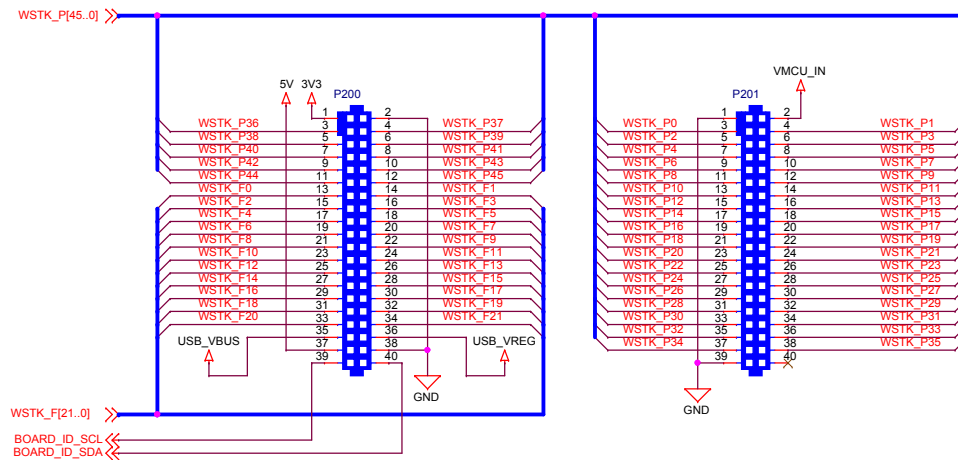


I/O Port Pins

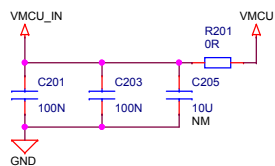


| | | | |
|--|--|--|--|
|  SILICON LABS | | Schematic Title | |
| | | EFR32xG21 2.4 GHz 0/10 dBm Radio Board with EFP | |
| Designed: PMI | | Page Title | |
| Size A3 | | EFR32 Signal Assignments | |
| BOM Doc No: <Cage Code> | | Document number | |
| Design Created Date: Friday, November 03, 2017 | | BRD4179B | |
| Sheet Created Date: Friday, November 03, 2017 | | Revision | |
| Sheet Modified Date: Friday, January 10, 2020 | | A02 | |
| Sheet 3 of 4 | | | |

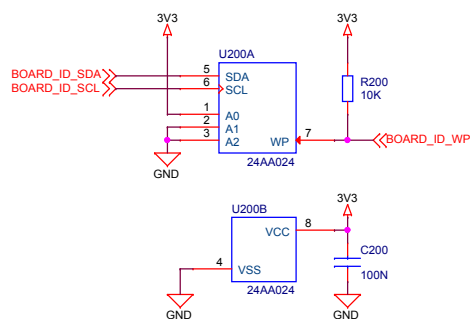
WSTK Connectors



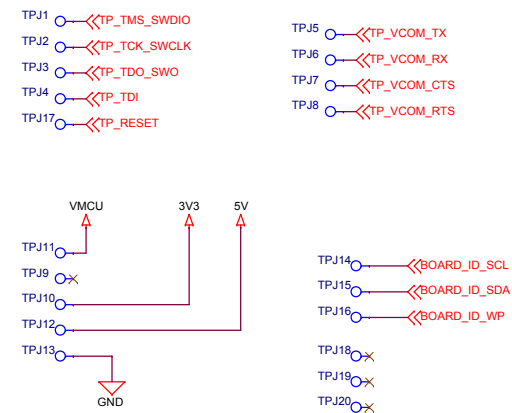
WSTK Power Decoupling




Board Identification



Test Points



| | | | |
|--|--|--|--------------|
|  SILICON LABS | | Schematic Title | |
| | | EFR32xG21 2.4 GHz 0/10 dBm Radio Board with EFP | |
| Designed: PMI | | Page Title | |
| Size A3 | | WSTK Connectors & Board ID | |
| BOM Doc No: <Cage Code> | | Document number | Revision |
| Design Created Date: Friday, November 03, 2017 | | BRD4179B | A02 |
| Sheet Created Date: Friday, November 03, 2017 | | Sheet Modified Date: Friday, January 10, 2020 | Sheet 4 of 4 |