



EFR32xG21 Radio Board

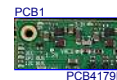
2.4 GHz 0/10dBm, with EFP

| Board Function | Page |
|----------------------------|------|
| Title Page | 1 |
| RF, Antenna & Power | 2 |
| EFR32 Signal Assignments | 3 |
| WSTK Connectors & Board ID | 4 |

Revision History

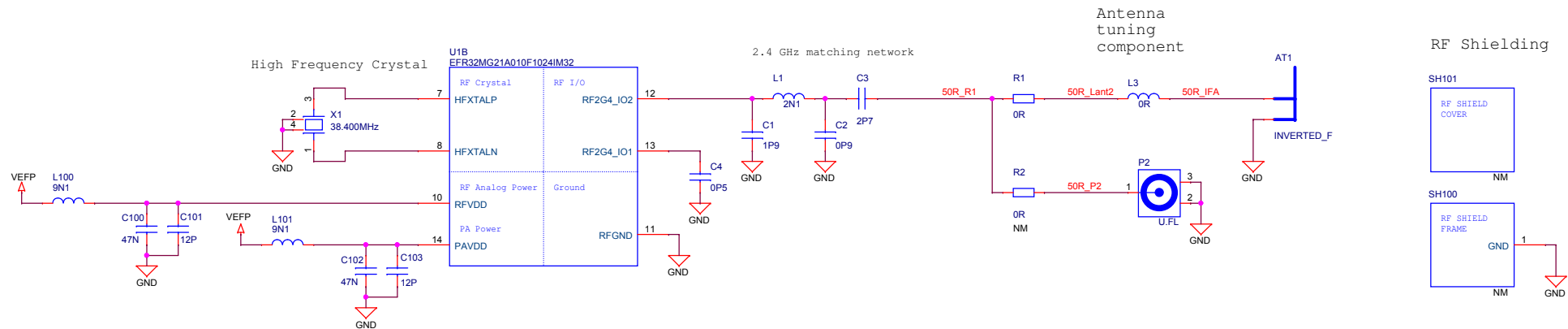
| Rev. | Description |
|------|--|
| A00 | Init. rev. based on BRD4179A Rev. A00. Xtal, pinmap, RF and EFP updates. |
| A01 | 0/10dBm match. Improved filter for EFP out. No C105. Fixed L305, L304 OPN. |
| A02 | Updated EFP01 to IC rev. D. |
| A03 | R212 is mounted. Fixed net aliases. |
| | |
| | |
| | |
| | |
| | |

LEGAL NOTICE:
SILICON LABORATORIES INC. ("SILICON LABS") AND/OR ITS LICENSORS DO NOT WARRANT THE ACCURACY OR COMPLETENESS OF THIS SCHEMATIC OR ANY INFORMATION CONTAINED WITHIN THIS SCHEMATIC. IT IS PROVIDED "AS-IS" FOR REFERENCE ONLY. SILICON LABS DOES NOT WARRANT THAT THIS DESIGN WILL MEET THE SPECIFICATIONS, BE SUITABLE FOR YOUR APPLICATION OR FIT FOR ANY PARTICULAR PURPOSE, OR WILL OPERATE IN YOUR IMPLEMENTATION. SILICON LABS AND ITS LICENSORS DO NOT WARRANT THAT THE DESIGN IMPLIED IN THIS SCHEMATIC IS PRODUCTION-WORTHY. YOU SHOULD COMPLETELY VALIDATE AND TEST YOUR DESIGN IMPLEMENTATION TO CONFIRM SYSTEM FUNCTIONALITY FOR YOUR APPLICATION.

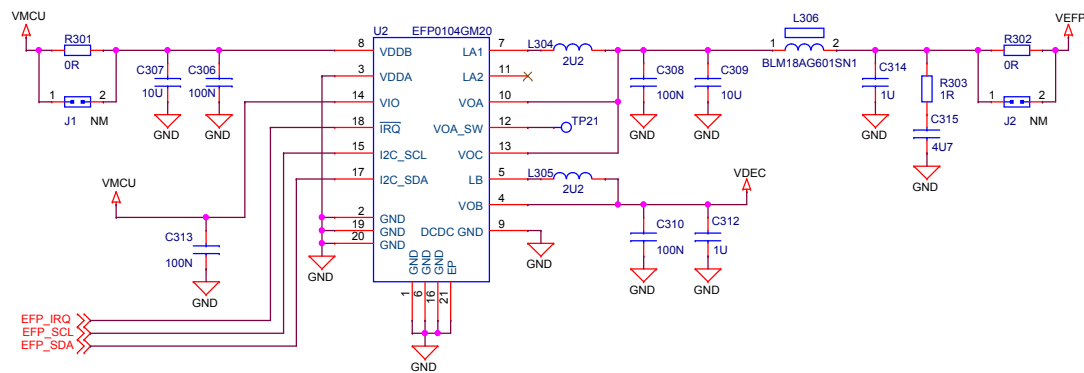


| | | | | | |
|---|--|---|--|------------------------------------|--|
| Designed: PMI | | Approved: TAB | | Title Page | |
| Size A3 | | BOM Doc No: <Cage Code> | | Document number BRD4179B | |
| Design Created Date: Friday, November 03, 2017 | | Sheet Created Date Friday, November 03, 2017 | | Revision A03 | |
| | | Sheet Modified Date Tuesday, February 18, 2020 | | Sheet 1 of 4 | |

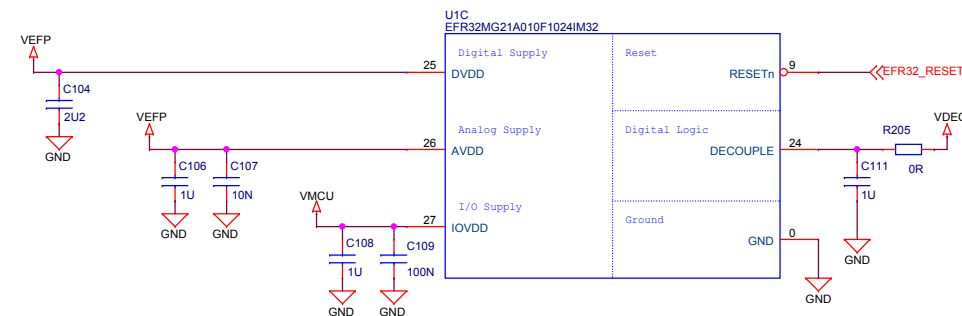
Antenna & Radio Interface




EFP01 DCDC

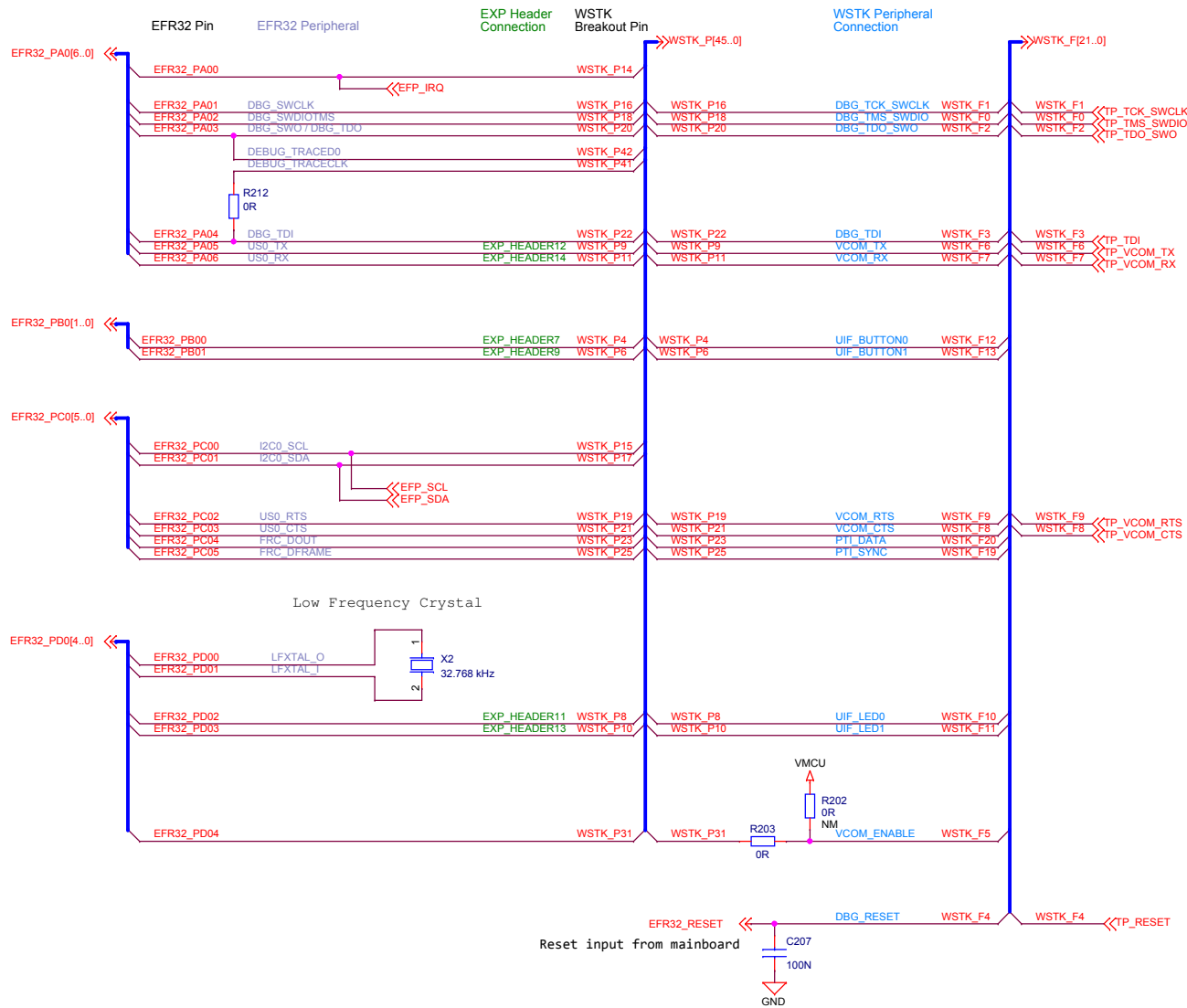


Power & Decoupling

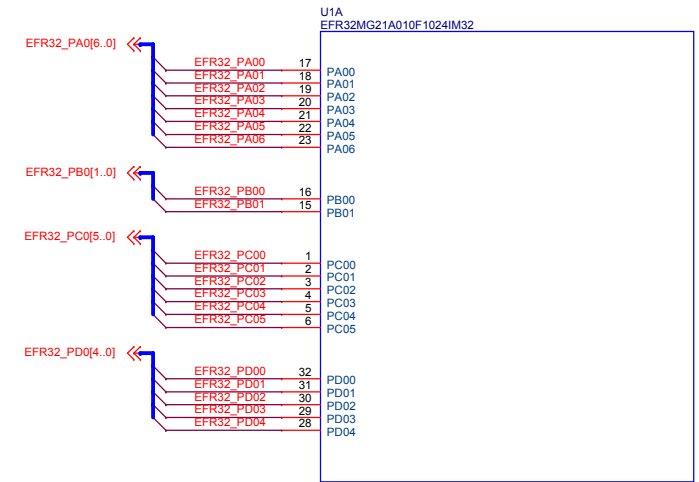



| | | | |
|--|-------------|--|----------------------------|
|  SILICON LABS | | Schematic Title | |
| | | EFR32xG21 2.4 GHz 0/10 dBm Radio Board with EFP | |
| Page Title | | RF, Antenna & Power | |
| Designed: | Approved: | Document number | Revision |
| PMI | TAB | BRD4179B | A03 |
| Size | BOM Doc No: | Sheet Created Date | Sheet Modified Date |
| A3 | <Cage Code> | Friday, November 03, 2017 | Tuesday, February 18, 2020 |
| Design Created Date: | | Sheet | 2 of 4 |

Pin Mapping

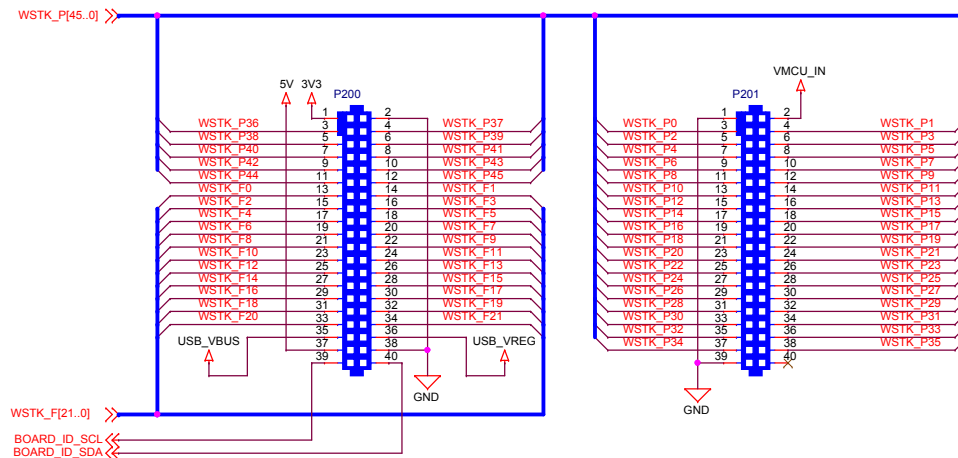


I/O Port Pins

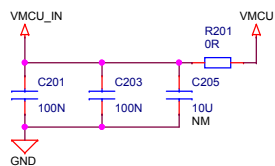


| | | | |
|---|--|---|--------------|
|  | | Schematic Title | |
| | | EFR32xG21 2.4 GHz 0/10 dBm Radio Board with EFP | |
| Designed: PMI Size A3 Design Created Date: Friday, November 03, 2017 | | Page Title | |
| | | EFR32 Signal Assignments | |
| BOM Doc No: <Cage Code> | | Document number | Revision |
| Friday, November 03, 2017 | | BRD4179B | A03 |
| Sheet Created Date: Friday, November 03, 2017 | | Sheet Modified Date: Tuesday, February 18, 2020 | Sheet 3 of 4 |

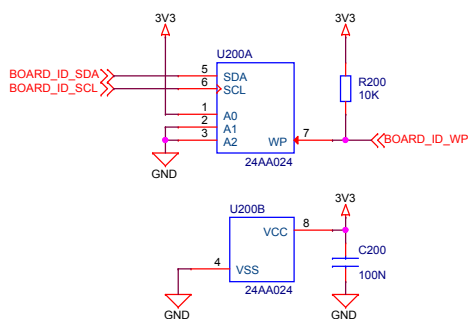
WSTK Connectors



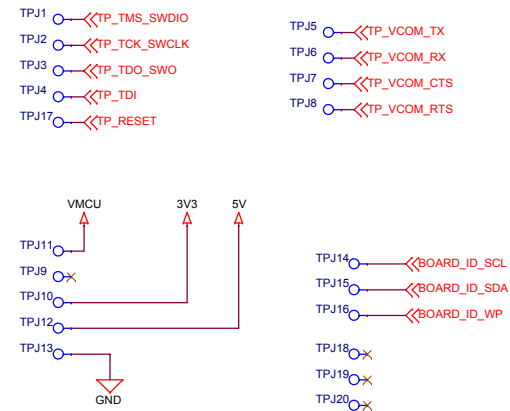
WSTK Power Decoupling




Board Identification



Test Points



| | | | |
|--|--|--|--------------|
|  SILICON LABS | | Schematic Title | |
| | | EFR32xG21 2.4 GHz 0/10 dBm Radio Board with EFP | |
| Designed: PMI | | Page Title | |
| Size A3 | | WSTK Connectors & Board ID | |
| BOM Doc No: <Cage Code> | | Document number | Revision |
| Design Created Date: Friday, November 03, 2017 | | BRD4179B | A03 |
| Sheet Created Date: Friday, November 03, 2017 | | Sheet Modified Date: Tuesday, February 18, 2020 | Sheet 4 of 4 |