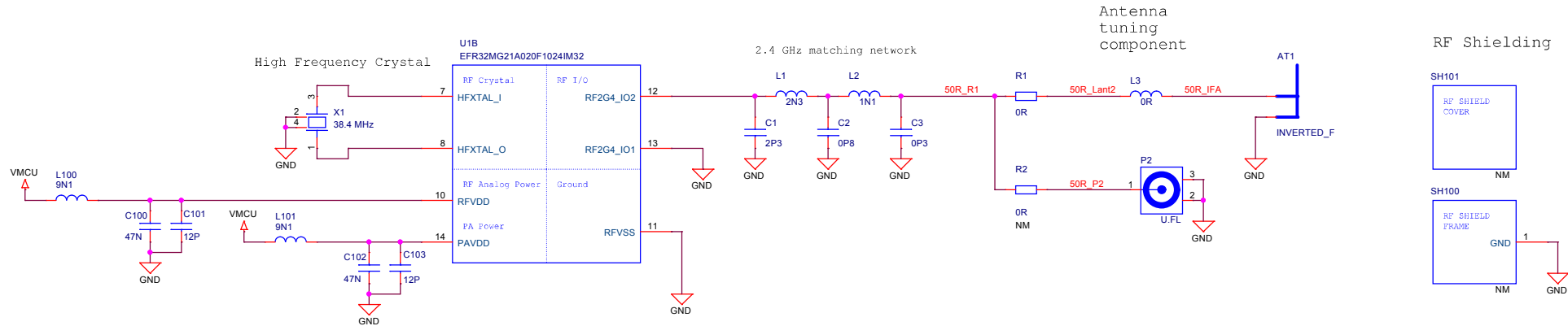
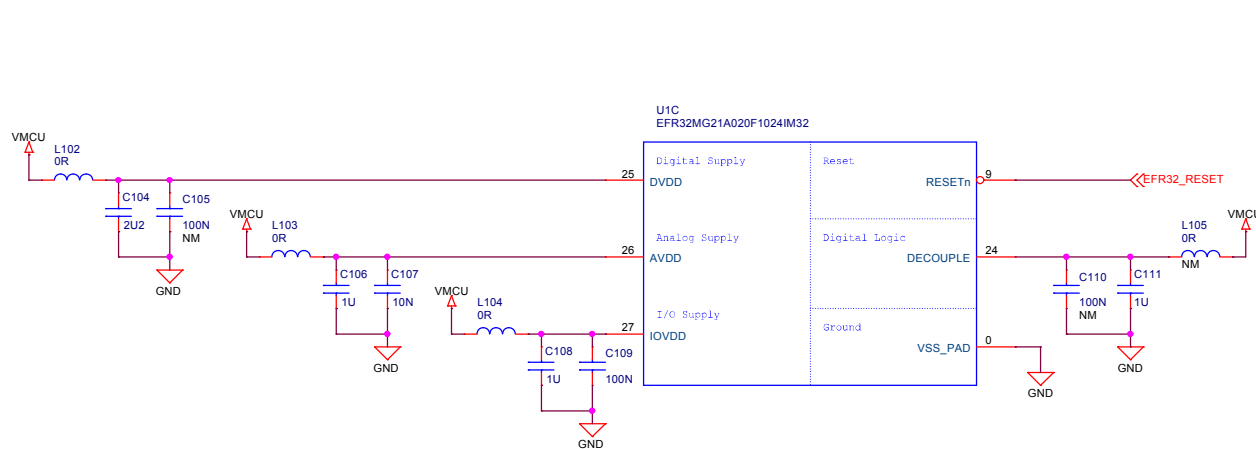




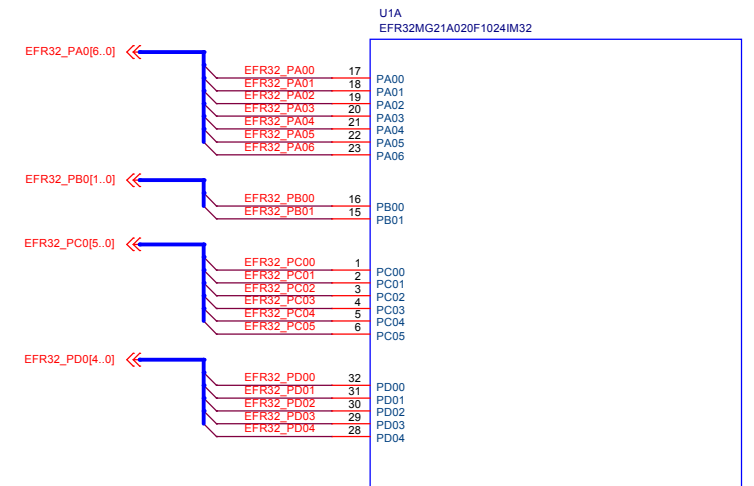
## Antenna & Radio Interface




## Power & Decoupling

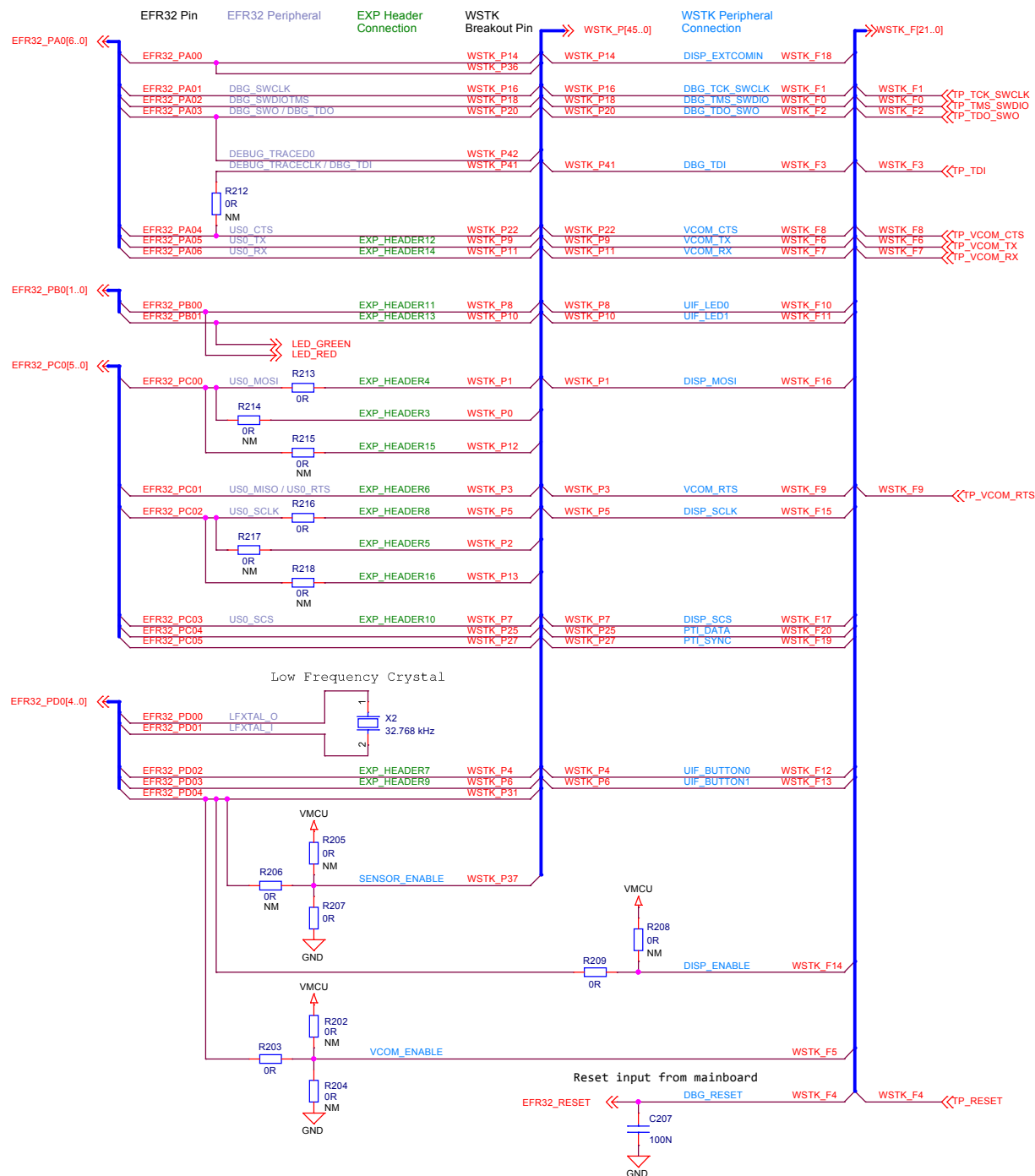


## I/O Port Pins

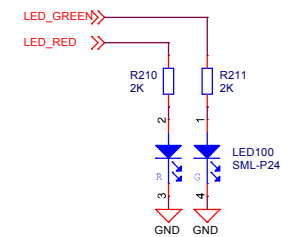


		Schematic Title	
		<b>EFR32xG21 2.4 GHz 20 dBm Radio Board</b>	
Designed: JSH		Page Title	
Approved: JNO		<b>RF, Antenna and Power</b>	
Size A3	BOM Doc No:	Document number	Revision
		<b>BRD4180A</b>	<b>A02</b>
Design Created Date: Friday, November 03, 2017		Sheet Created Date: Friday, November 03, 2017	Sheet Modified Date: Thursday, July 02, 2020
			Sheet 2 of 4

## Pin Mapping



## LEDs



Schematic Title
-----------------

## EFR32xG21 2.4 GHz 20 dBm Radio Board

Page Title

## I/O Port Connections

Designed: JSH		Approved: JNO	
Size A3	BOM Doc No:		
Design Created Date: Friday, November 03, 2017			

Document number

**BRD4180A**

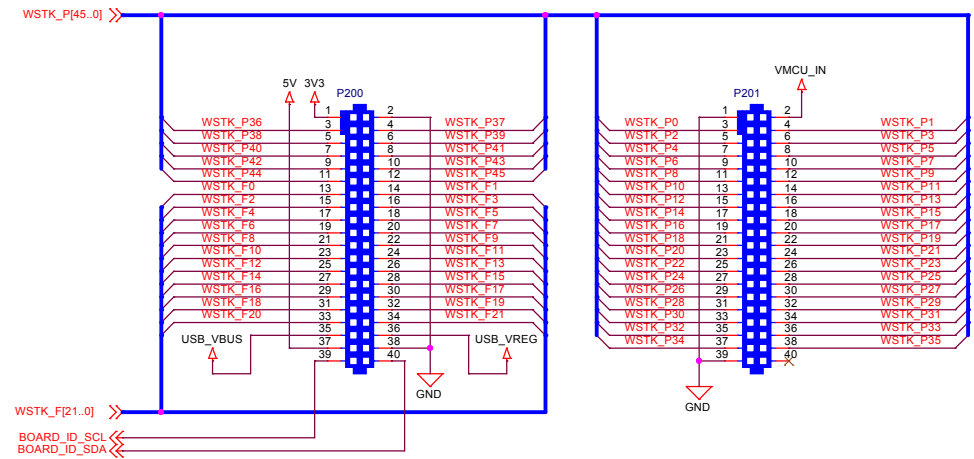
Sheet Created Date  
Friday, November 03, 2017

Sheet Modified Date  
Thursday, July 02, 2020

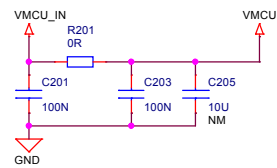
Revision	A02
----------	-----

Sheet  
3 of

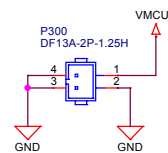
WSTK Connectors



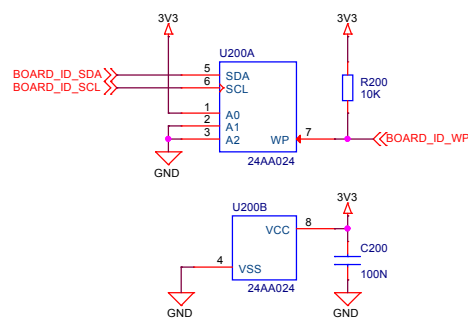
WSTK Power Decoupling



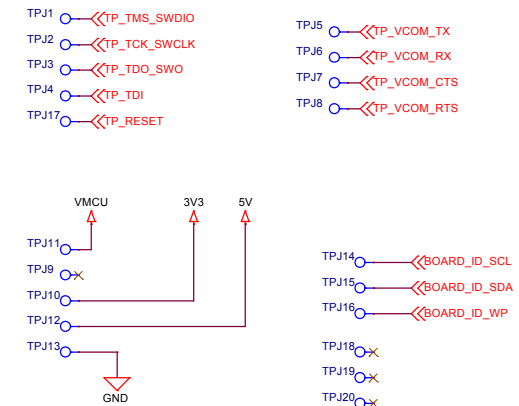
Battery Connector




Board Identification



Test Points



	Schematic Title	
	<b>EFR32xG21 2.4 GHz 20 dBm Radio Board</b>	
Page Title		<b>WSTK Connectors &amp; Board ID</b>
Designed: JSH	Approved: JNO	Document number <b>BRD4180A</b>
Size A3	BOM Doc No:	Revision A02
Design Created Date: Friday, November 03, 2017	Sheet Created Date Friday, November 03, 2017	Sheet Modified Date Thursday, July 02, 2020
		Sheet 4 of 4