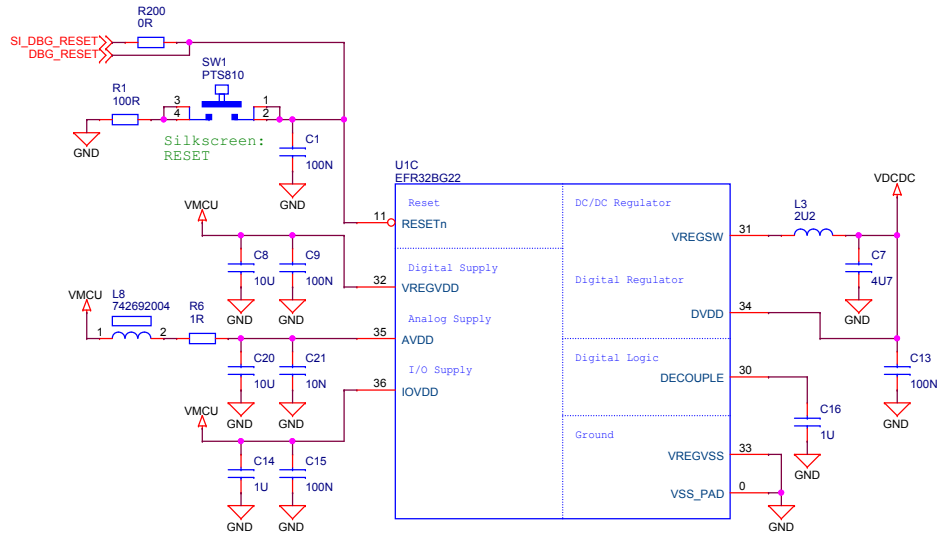
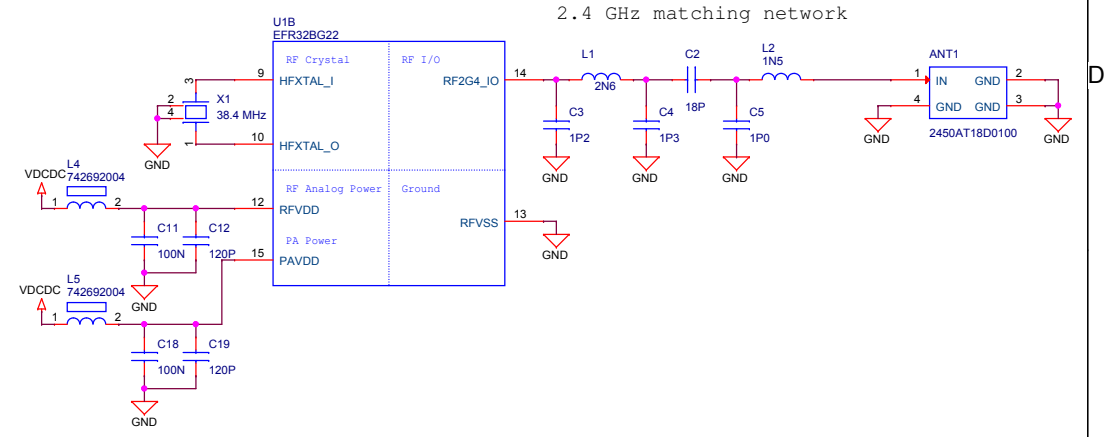


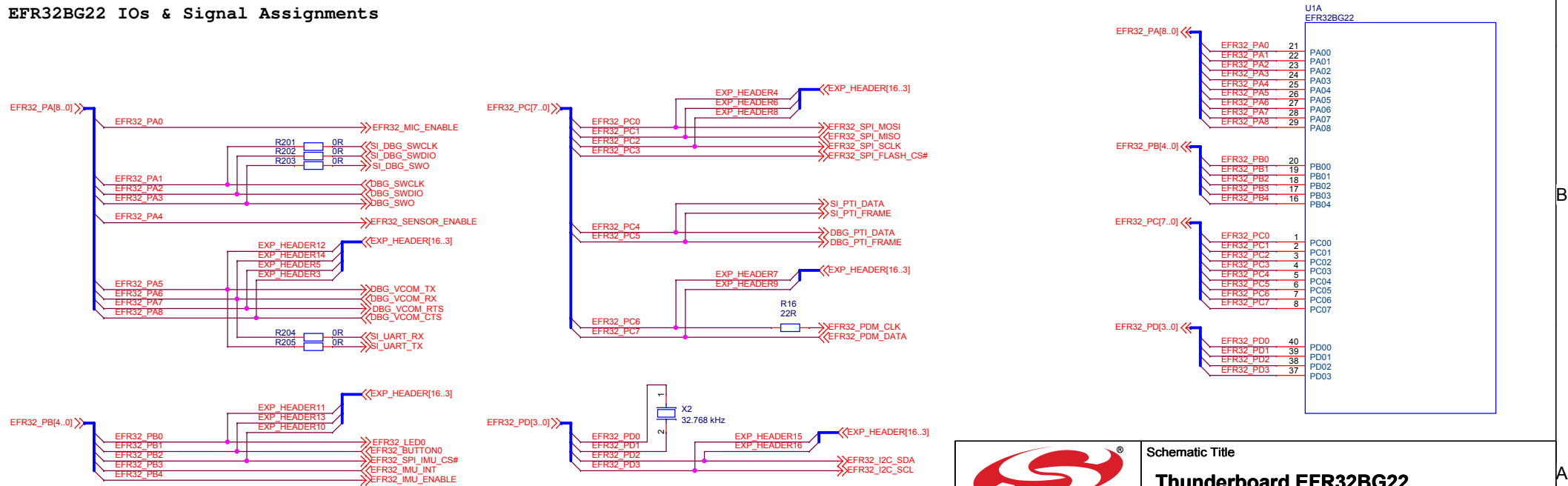
EFR32BG22 Power Section



EFR32BG22 RF Section



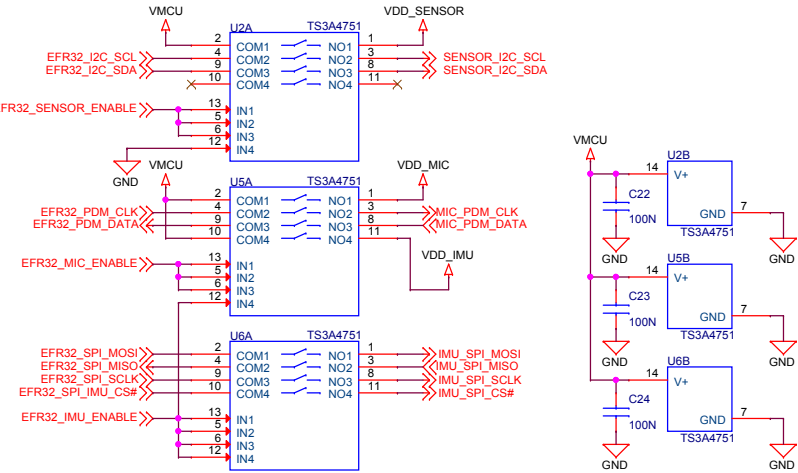
EFR32BG22 IOs & Signal Assignments



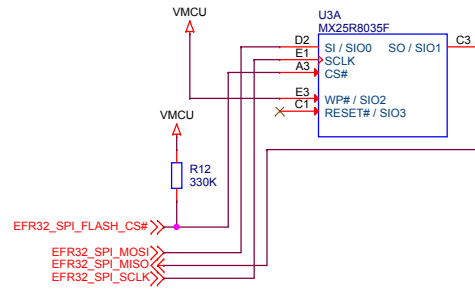
		Schematic Title	
		Thunderboard EFR32BG22	
Designed: ESH Size: A3		Page Title	
		EFR32BG22	
Approved: JSH		Document number	
BOM Doc No:		BRD4184A	
Design Created Date: Wednesday, July 31, 2019		Sheet Created Date: Thursday, August 01, 2019	
		Sheet Modified Date: Friday, November 22, 2019	
		Revision	
		A01	
		Sheet	
		2 of 5	

Sensor Power/Isolation

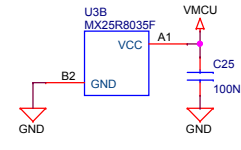
There are no pull-down resistors on the enable pins, and software should therefore immediately drive the lines to prevent the pins from floating.



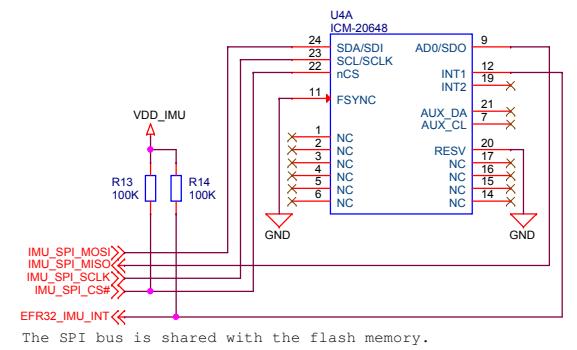
SPI Flash



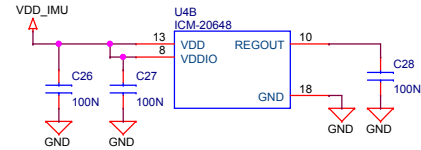
The SPI bus is shared with the IMU.



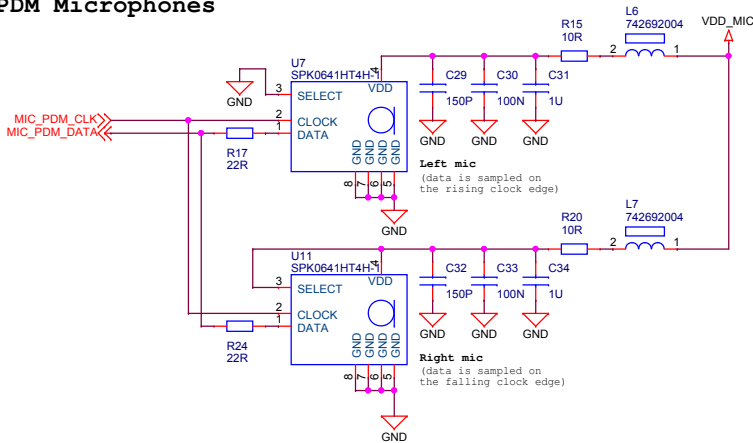
6-axis Inertial Sensor (IMU)



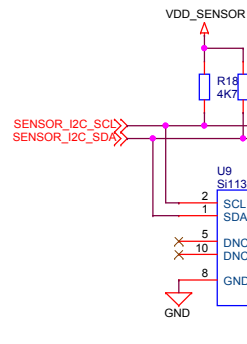
The SPI bus is shared with the flash memory.



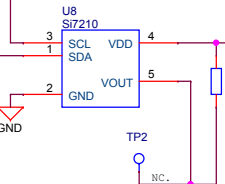
PDM Microphones



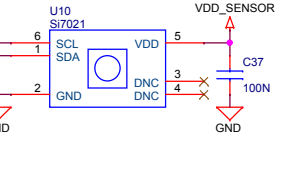
UV/Ambient Light Sensor



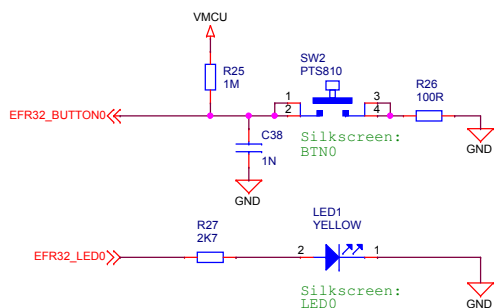
Hall-effect Sensor



RH/Temp Sensor

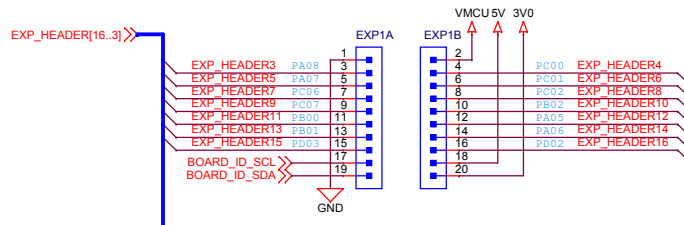


Push Buttons & LEDs

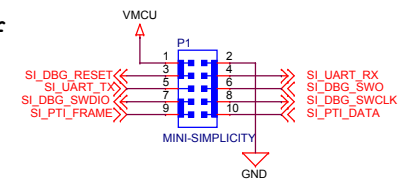


Breakout Pads - EXP Header

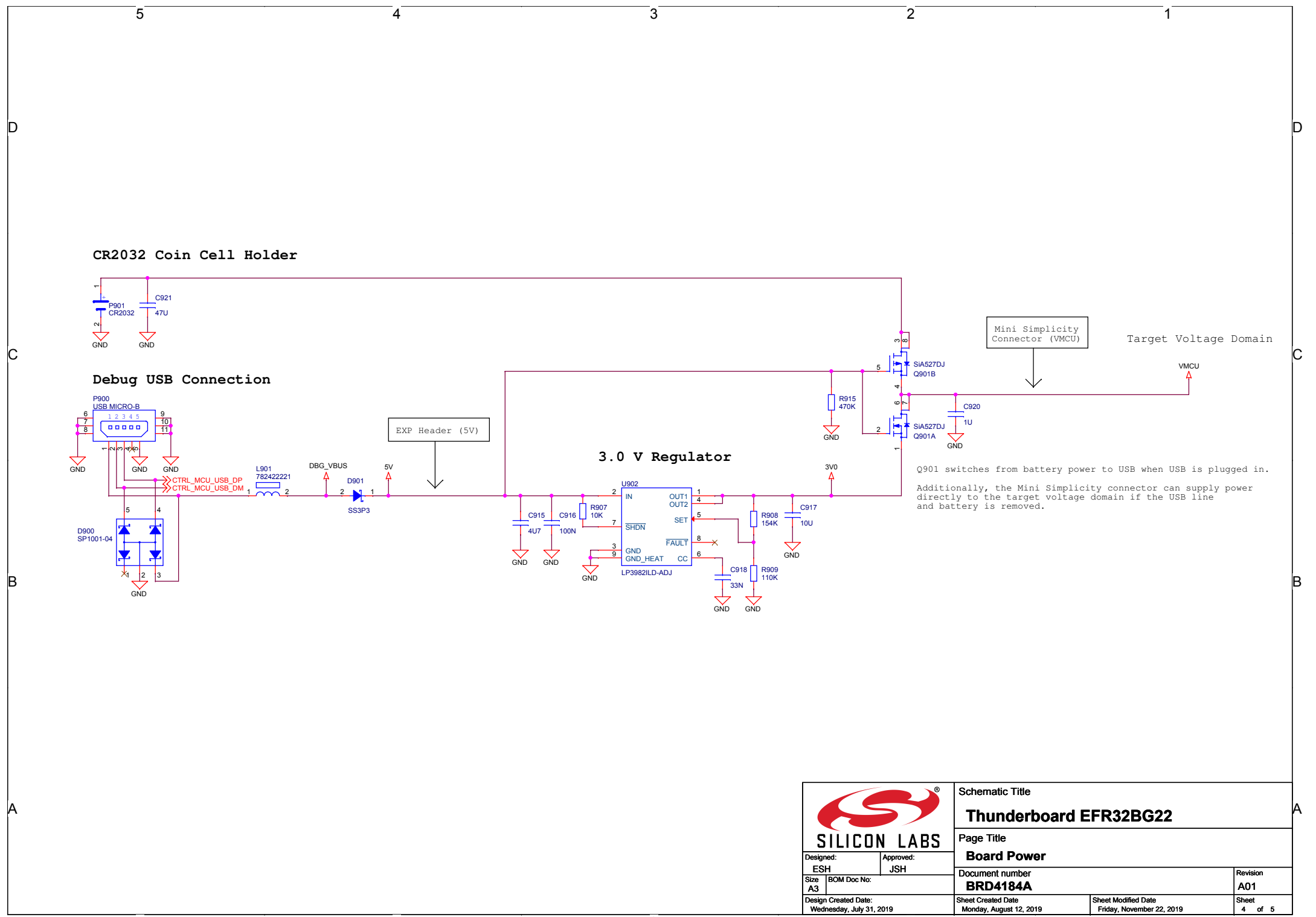
All signals routed to the EXP header are used on the board as well. Take care to avoid signal conflicts (see page 2 for signal assignments).




Mini Simplicity Connector

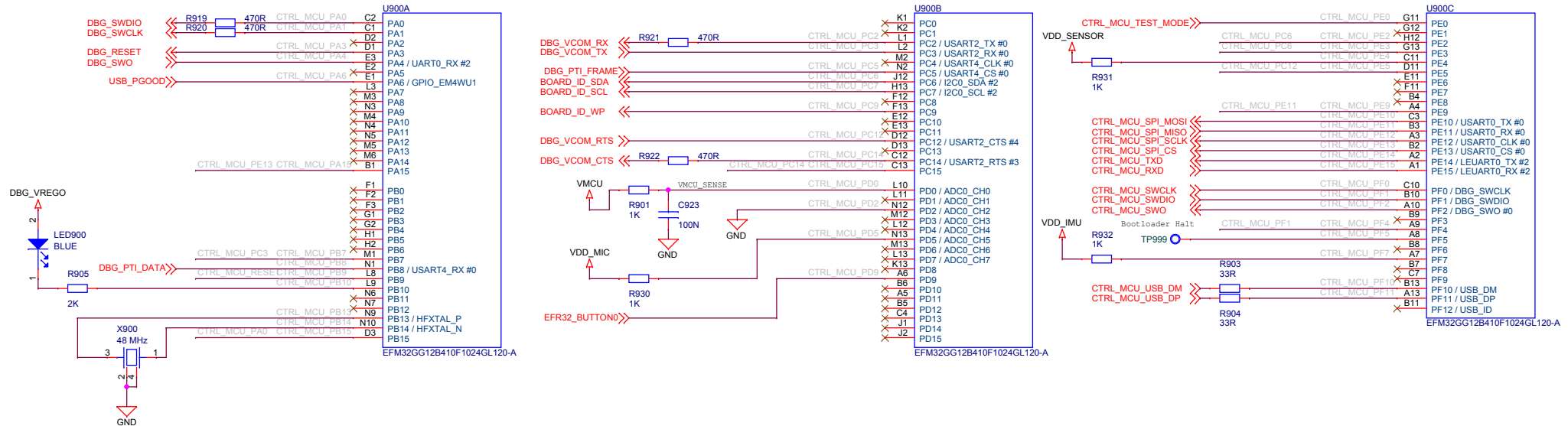


		Schematic Title	
		Thunderboard EFR32BG22	
Designed: ESH Size: A3		Page Title	
		Sensors and Peripherals	
Approved: JSH BOM Doc No:		Document number BRD4184A	
Design Created Date: Wednesday, July 31, 2019		Revision A01	
Sheet Created Date: Friday, August 02, 2019		Sheet Modified Date: Friday, November 22, 2019	
Sheet 3 of 5		Sheet 3 of 5	

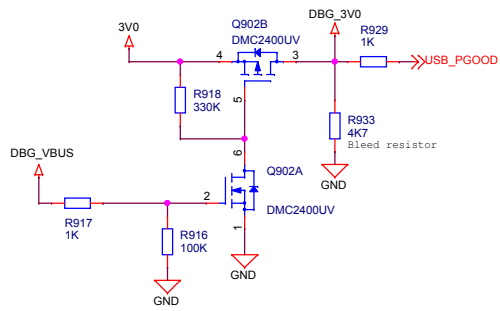


 SILICON LABS		Schematic Title	
		Thunderboard EFR32BG22	
Designed: ESH Approved: JSH		Page Title	
		Board Power	
Size: A3	BOM Doc No:	Document number	Revision
		BRD4184A	A01
Design Created Date:	Sheet Created Date:	Sheet Modified Date:	Sheet
Wednesday, July 31, 2019	Monday, August 12, 2019	Friday, November 22, 2019	4 of 5

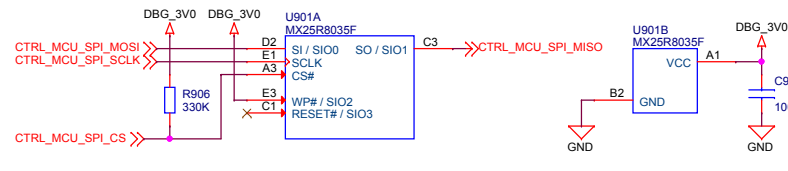
On-board Debugger



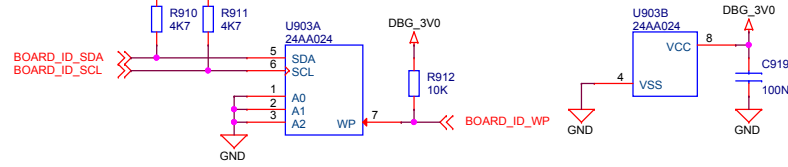
USB Cable Detection and Power Isolation



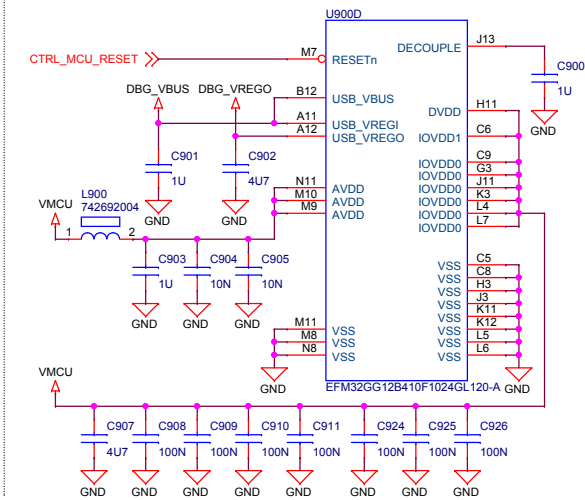
Serial Flash



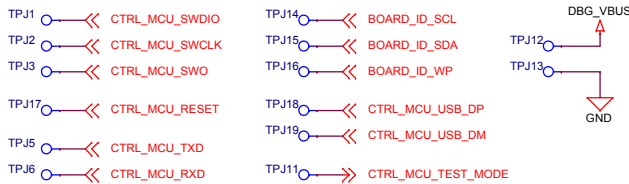
Board ID



On-board Debugger Power



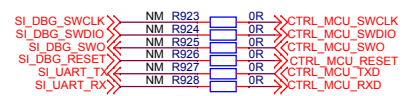
Test Points



Mech



Misc



		Schematic Title	
		Thunderboard EFR32BG22	
Designed: ESH Approved: JSH		Page Title	
		On-board Debugger	
Design Created Date: Wednesday, July 31, 2019		Document number BRD4184A	
Sheet Created Date: Monday, August 12, 2019		Revision A01	
Sheet Modified Date: Friday, November 22, 2019		Sheet 5 of 5	