



EFR32xG24B Radio Board

2.4 GHz 20 dBm

Board Function

Page

Title Page

1

RF, Antenna and Power

2

EFR32 Signal Assignments

3

WSTK Connectors & Board ID

4




LEGAL NOTICE:
SILICON LABORATORIES INC. ("SILICON LABS") AND/OR ITS LICENSORS DO NOT WARRANT THE ACCURACY OR COMPLETENESS OF THIS SCHEMATIC OR ANY INFORMATION CONTAINED WITHIN THIS SCHEMATIC. IT IS PROVIDED "AS-IS" FOR REFERENCE ONLY. SILICON LABS DOES NOT WARRANT THAT THIS DESIGN WILL MEET THE SPECIFICATIONS, BE SUITABLE FOR YOUR APPLICATION OR FIT FOR ANY PARTICULAR PURPOSE, OR WILL OPERATE IN YOUR IMPLEMENTATION. SILICON LABS AND ITS LICENSORS DO NOT WARRANT THAT THE DESIGN IMPLIED IN THIS SCHEMATIC IS PRODUCTION-WORTHY. YOU SHOULD COMPLETELY VALIDATE AND TEST YOUR DESIGN IMPLEMENTATION TO CONFIRM SYSTEM FUNCTIONALITY FOR YOUR APPLICATION.

Revision History

Rev. Description

A00 Initial release.

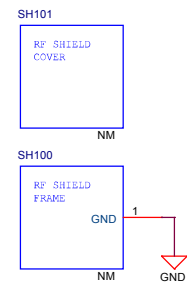
A01 U1 with new factory calibrations, mounted C3.

 SILICON LABS		Board Name EFR32xG24B 2.4 GHz 20 dBm Radio Board	
		Page Title Title Page	
Designed TAB	Approved RGU	Board Number BRD4187C	Revision A01
Size A3	Sheet Modified Date Tuesday, February 15, 2022	Copyright Silicon Laboratories Inc. 2020 Confidential – Subject to Terms of Use	
			Sheet 1 of 4

D



D

C

B



[illegible]

I/O Port Pins

The diagram shows the pin connections for the EFR32xG24B 2.4 GHz 20 dBm Radio Board. The pins are organized into four groups, each connected to a specific I/O port:

- PA Pins (PA00-PA09):** EFR32_PA0[9..0] to EFR32_PA09
- PB Pins (PB00-PB05):** EFR32_PB0[5..0] to EFR32_PB05
- PC Pins (PC00-PC09):** EFR32_PC0[9..0] to EFR32_PC09
- PD Pins (PD00-PD05):** EFR32_PD0[5..0] to EFR32_PD05

Serial Flash

The serial flash is connected to the EFR32xG24B 2.4 GHz 20 dBm Radio Board. The connections are as follows:

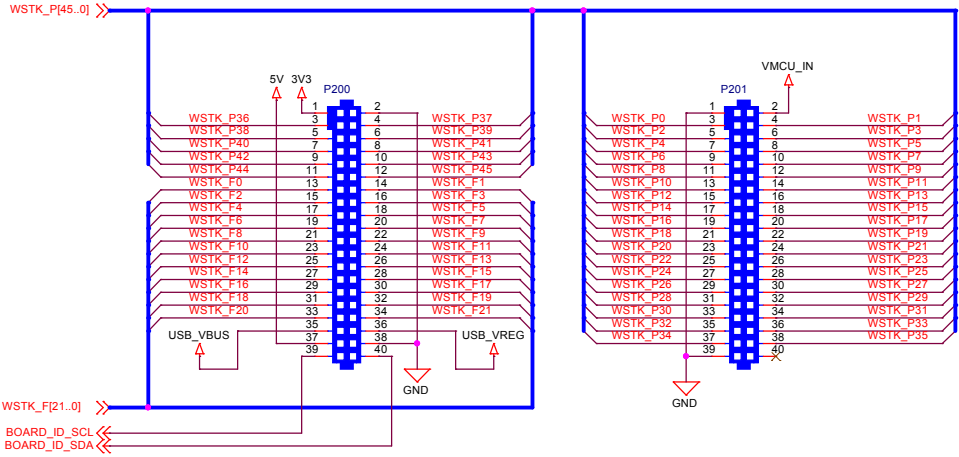
- U100A (MX25R8035F):**
 - D2: SI / SIO0
 - E1: SO / SIO1
 - A3: SCLK
 - C1: CS#
 - E3: WP# / SIO2
 - C1: RESET# / SIO3
- U100B (MX25R8035F):**
 - A1: VCC
 - B2: GND

The diagram also shows the connection of the FLASH_MOSI, FLASH_SCLK, and FLASH_SCS pins to the serial flash. The FLASH_SCS pin is connected to a 330K resistor (R103) and the VMCU pin. The FLASH_MOSI and FLASH_SCLK pins are connected to the serial flash. The FLASH_MISO pin is connected to the serial flash. The VMCU pin is connected to the serial flash. The GND pin is connected to the serial flash.

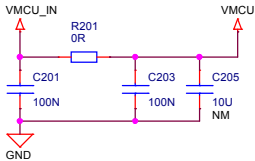


Board Name	
EFR32xG24B 2.4 GHz 20 dBm Radio Board	
Page Title	
EFR32 Signal Assignments	
Board Number	Revision
BRD4187C	A01
LABORATORIES INC. 2020	CONFIDENTIAL – SUBJECT TO TERMS OF USE
Sheet 3 of 4	

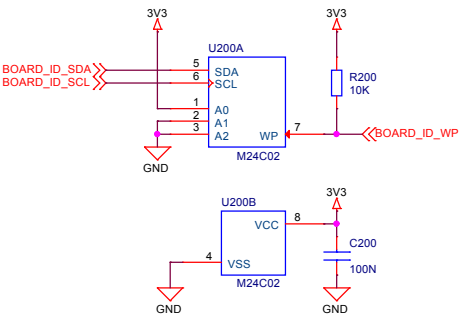
WSTK Connectors



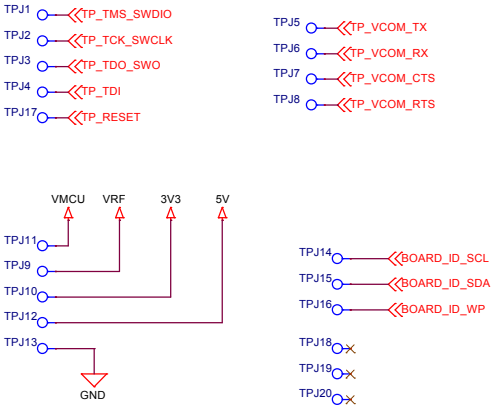
WSTK Power Decoupling




Board Identification



Test Points



 SILICON LABS	Board Name EFR32xG24B 2.4 GHz 20 dBm Radio Board	
	Page Title WSTK Connectors & Board ID	
Designed TAB	Approved RGU	Board Number BRD4187C
Size A3	Sheet Modified Date Tuesday, February 15, 2022	Revision A01
COPYRIGHT SILICON LABORATORIES INC. 2020 CONFIDENTIAL – SUBJECT TO TERMS OF USE		Sheet 4 of 4