



EFR32xG24 / Si4468 Radio Board	
2.4 GHz 20 dBm / 868-915 MHz 14 dBm	
Board Function	Page
Title Page	1
RF, Antenna and Power	2
SubGHz RF & Power	3
EFR32 Signal Assignments	4
WSTK Connectors & Board ID	5

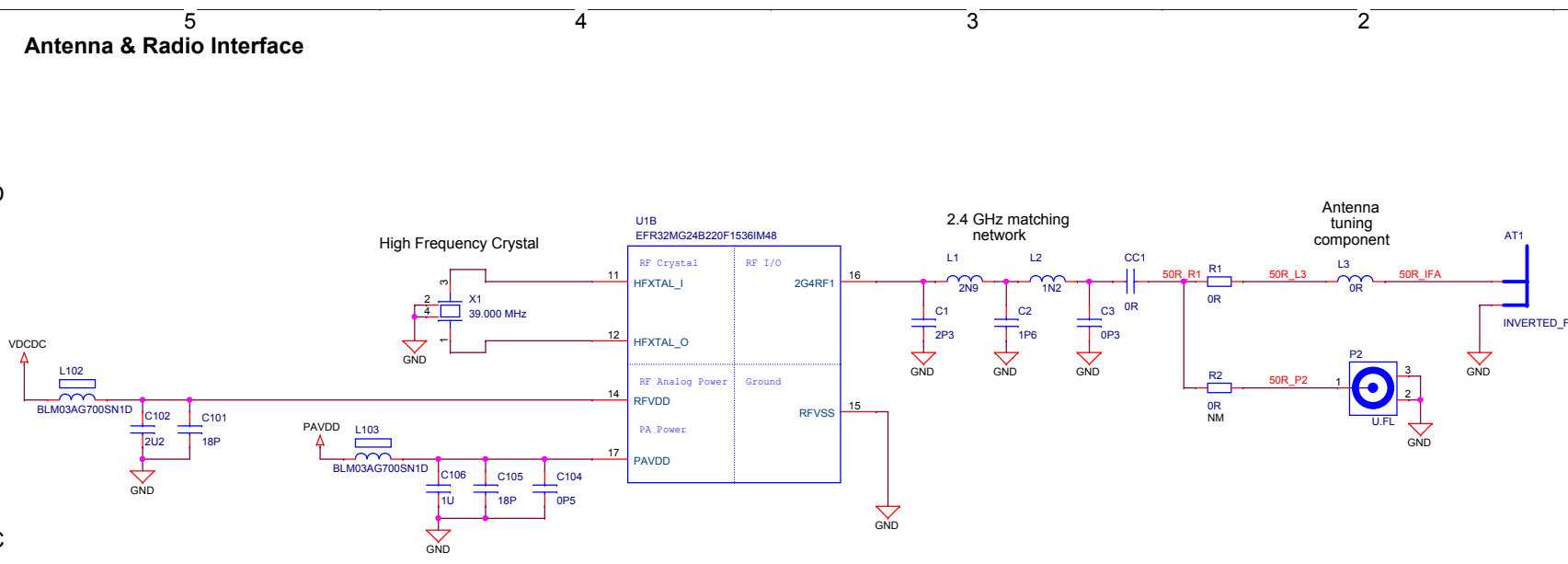


LEGAL NOTICE:
SILICON LABORATORIES INC. ("SILICON LABS") AND/OR ITS LICENSORS DO NOT WARRANT THE ACCURACY OR COMPLETENESS OF THIS SCHEMATIC OR ANY INFORMATION CONTAINED WITHIN THIS SCHEMATIC. IT IS PROVIDED "AS-IS" FOR REFERENCE ONLY. SILICON LABS DOES NOT WARRANT THAT THIS DESIGN WILL MEET THE SPECIFICATIONS, BE SUITABLE FOR YOUR APPLICATION OR FIT FOR ANY PARTICULAR PURPOSE, OR WILL OPERATE IN YOUR IMPLEMENTATION. SILICON LABS AND ITS LICENSORS DO NOT WARRANT THAT THE DESIGN IMPLIED IN THIS SCHEMATIC IS PRODUCTION-WORTHY. YOU SHOULD COMPLETELY VALIDATE AND TEST YOUR DESIGN IMPLEMENTATION TO CONFIRM SYSTEM FUNCTIONALITY FOR YOUR APPLICATION.

Revision History	
Rev.	Description
A00	Initial release
A01	Updated U1 OPN.

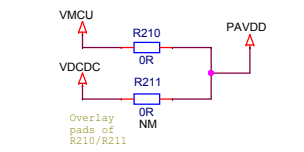
		Board Name	
		EFR32xG24 DualPHY 2400/915/868 MHz Radio Board	
SILICON LABS		Page Title	
		Title Page	
Designed SZL	Approved RGU	Board Number	Revision
Size A3	Sheet Modified Date Tuesday, May 31, 2022	BRD4197A	A01
COPYRIGHT SILICON LABORATORIES INC. 2020 CONFIDENTIAL – SUBJECT TO TERMS OF USE			Sheet 1 of 5

Antenna & Radio Interface

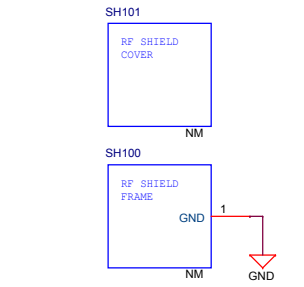


PAVDD Configuration

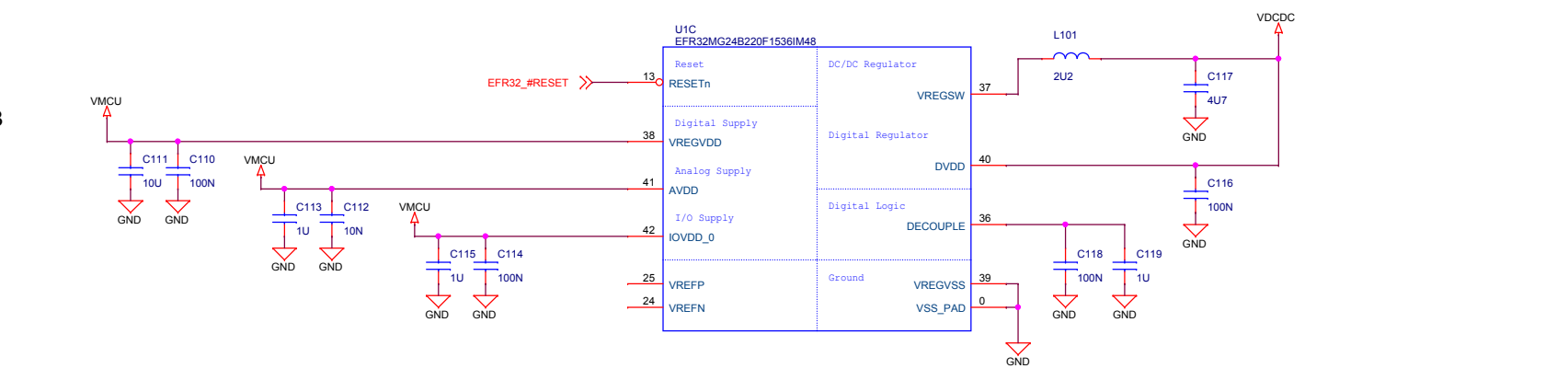
	Power Config 1 VMCU to PAVDD	Power Config 2 DCDC to PAVDD
R210	Mount	Not mount
R211	Not mount	Mount



RF Shielding

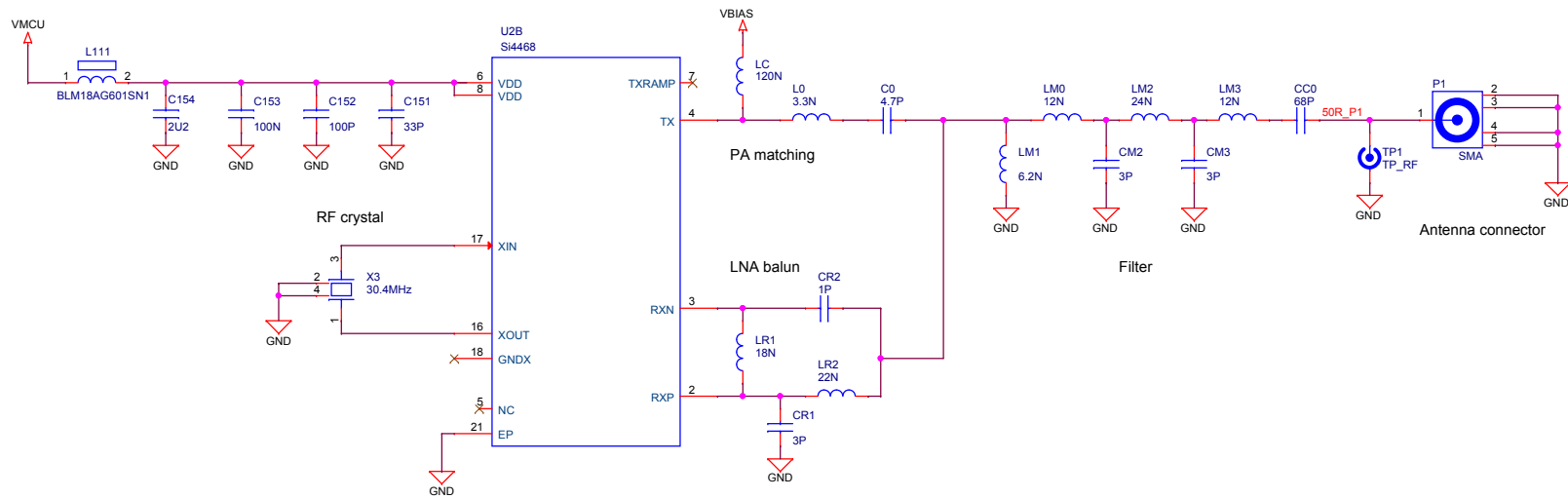


Power & Decoupling



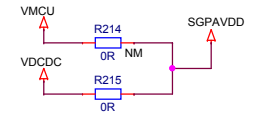
		Board Name	
		EFR32xG24 DualPHY 2400/915/868 MHz Radio Board	
Designed SZL		Page Title	
		RF & Power	
Size	Sheet Modified Date	Board Number	Revision
A3	Tuesday, May 31, 2022	BRD4197A	A01
COPYRIGHT SILICON LABORATORIES INC. 2020 CONFIDENTIAL – SUBJECT TO TERMS OF USE			Sheet 2 of 5

SubGHz Antenna & Radio Interface

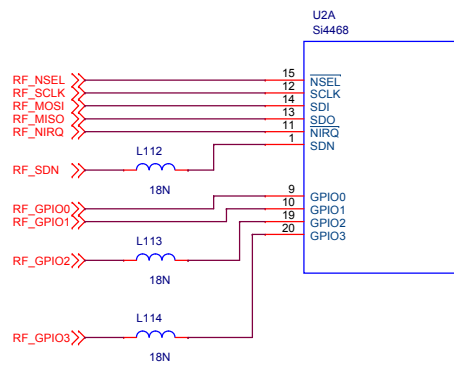


SGPAVDD Configuration

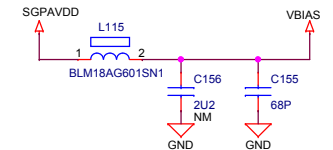
	Power Config 1 VMCU to SGPAVDD	Power Config 2 DCDC to SGPAVDD
R214	Mount	Not mount
R215	Not mount	Mount




Radio SPI & GPIO

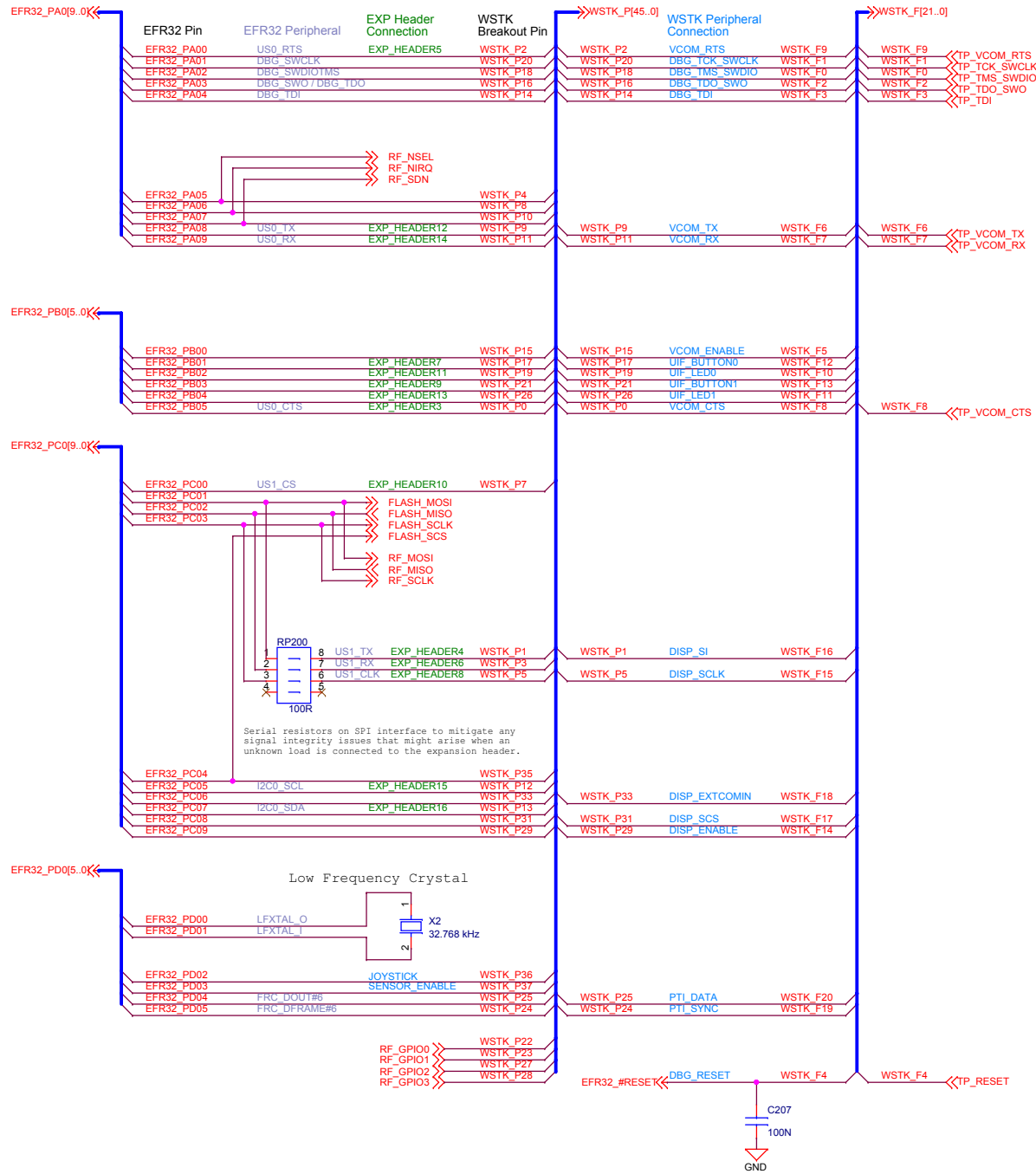


SGPAVDD Filtering

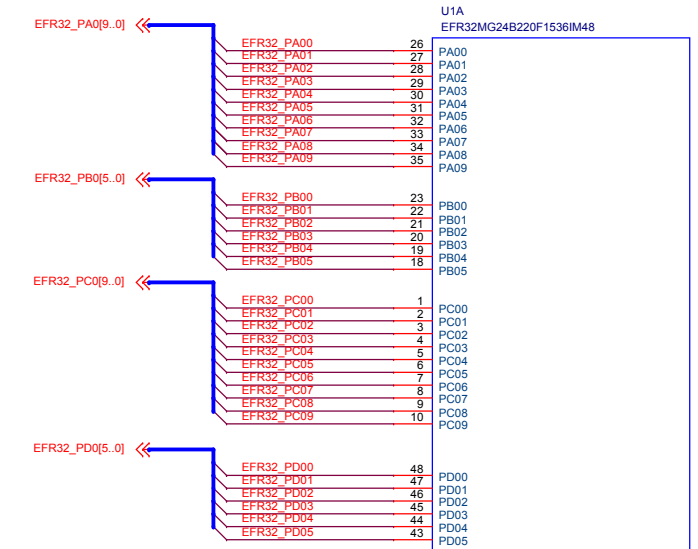


 SILICON LABS		Board Name	EFR32xG24 DualPHY 2400/915/868 MHz Radio Board
		Page Title	SubGHz RF & Power
Designed	Approved	Board Number	BRD4197A
Size	Sheet Modified Date	Revision	
A3	Tuesday, May 31, 2022	A01	Sheet 3 of 5
<small>COPYRIGHT SILICON LABORATORIES INC. 2020 CONFIDENTIAL – SUBJECT TO TERMS OF USE</small>			

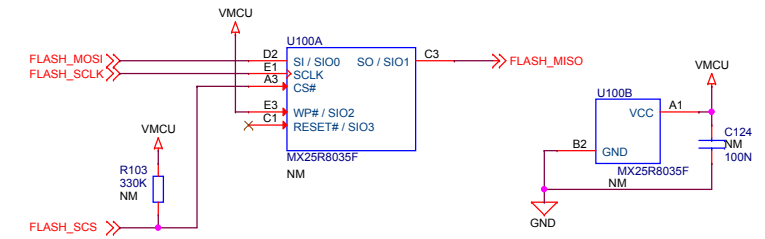
Pin Mapping



I/O Port Pins

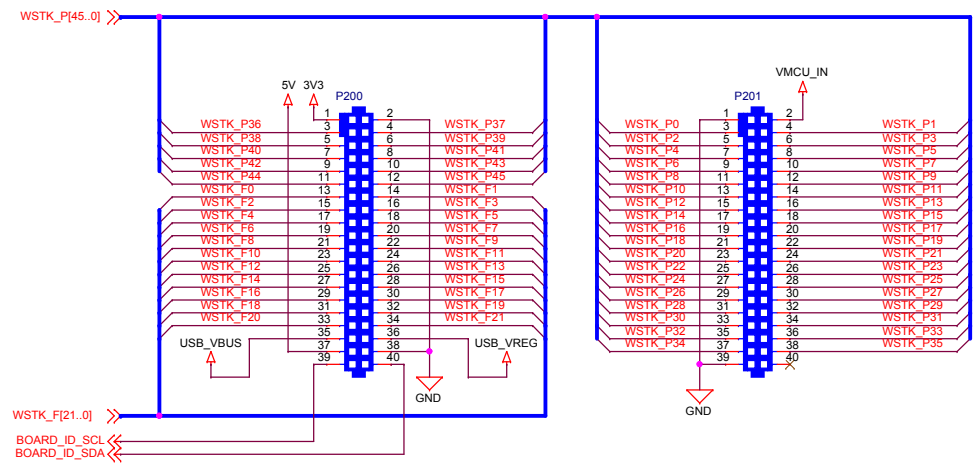


Serial Flash

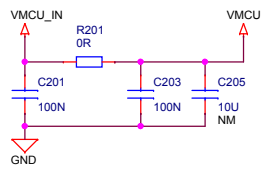


		Board Name	
		EFR32xG24 DualPHY 2400/915/868 MHz Radio Board	
Designed SZL Approved RGU		Page Title	
		EFR32 Signal Assignments	
Size A3 Sheet Modified Date Tuesday, May 31, 2022		Board Number	Revision
		BRD4197A	A01
COPYRIGHT SILICON LABORATORIES INC. 2020 CONFIDENTIAL – SUBJECT TO TERMS OF USE			
		Sheet	4 of 5

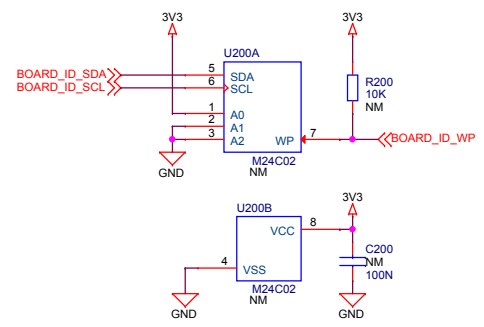
WSTK Connectors



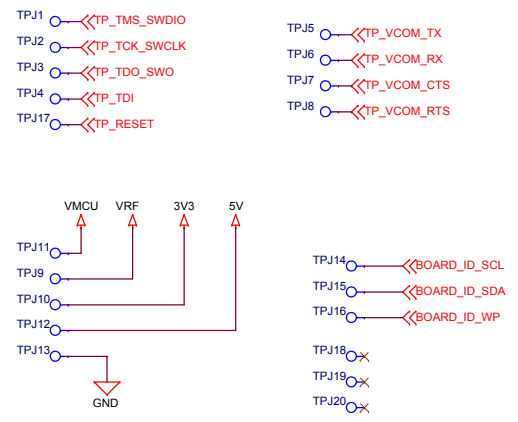
WSTK Power Decoupling



Board Identification



Test Points



		Board Name	
		EFR32xG24 DualPHY 2400/915/868 MHz Radio Board	
Designed SZL		Page Title	
		WSTK Connectors & Board ID	
Size A3		Board Number	
		BRD4197A	
Sheet Modified Date Tuesday, May 31, 2022		Revision	
		A01	
COPYRIGHT SILICON LABORATORIES INC. 2020 CONFIDENTIAL – SUBJECT TO TERMS OF USE			
		Sheet 5 of 5	