


**EFR32 Flex Gecko Dual Band Radio Board**  
2.4 GHz / 868 MHz 13 dBm, DCDC to PAVDD

Board Function	Page
Title Page	1
RF, Antenna & Power	2
EFR32 Signal Assignments	3
WSTK Connectors & Board ID	4



Revision History	
Rev.	Description
B00	Initial release.

<Schematic Path>  
SCHEMATIC1



SILICON LABS®

Designed:  
JSH

Approved:  
JNO

Size  
A3

BOM Doc No:  
<Cage Code>

Design Created Date:  
Monday, April 02, 2012

Sheet Created Date  
Monday, April 02, 2012

Schematic Title  
**EFR32FG Dual Band 2400/868 MHz Radio Board**

Page Title  
**Title Page**

Document number  
**BRD4250B**

Revision  
B00

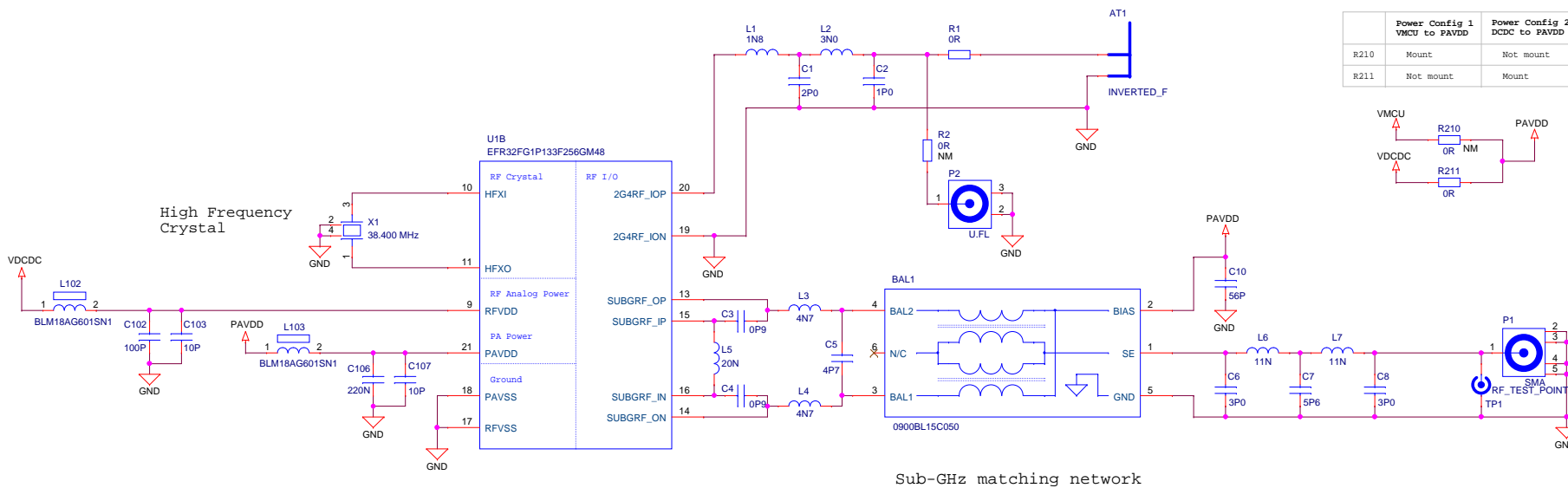
Sheet Modified Date  
Tuesday, February 09, 2016

Sheet  
1 of 4

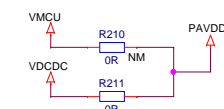
## Antenna & Radio Interface

## 2.4 GHz matching network

## PAVDD Configuration

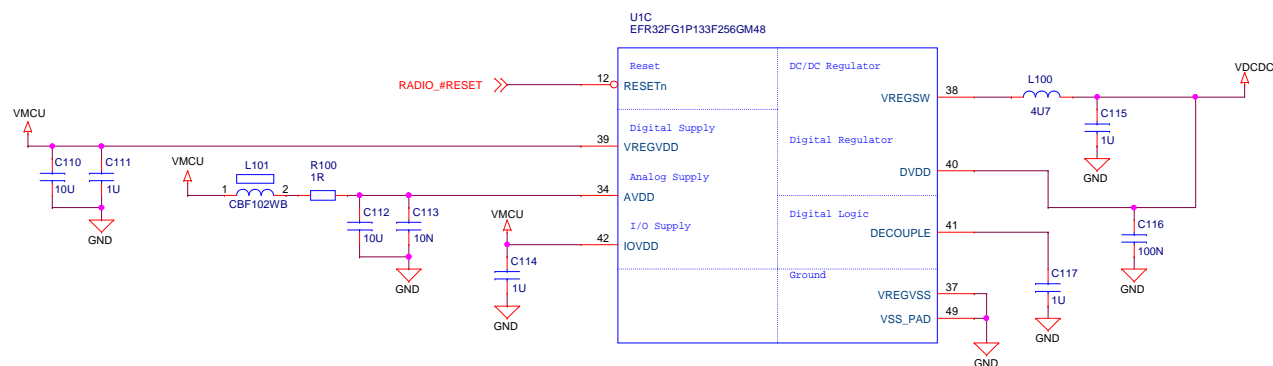


	Power Config 1 VMCU to PAVDD	Power Config DCDC to PAVDD
R210	Mount	Not mount
R211	Not mount	Mount

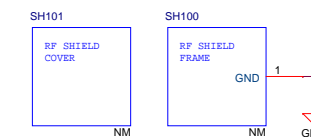


## Power & Decoupling

## Low Frequency Crystal



## RF Shielding



<Schematic Path>  
SCHEMATIC1



	Schematic Title
1	1.1
2	2.1
3	3.1
4	4.1
5	5.1
6	6.1
7	7.1
8	8.1
9	9.1
10	10.1
11	11.1
12	12.1
13	13.1
14	14.1
15	15.1
16	16.1
17	17.1
18	18.1
19	19.1
20	20.1
21	21.1
22	22.1
23	23.1
24	24.1
25	25.1
26	26.1
27	27.1
28	28.1
29	29.1
30	30.1
31	31.1
32	32.1
33	33.1
34	34.1
35	35.1
36	36.1
37	37.1
38	38.1
39	39.1
40	40.1
41	41.1
42	42.1
43	43.1
44	44.1
45	45.1
46	46.1
47	47.1
48	48.1
49	49.1
50	50.1
51	51.1
52	52.1
53	53.1
54	54.1
55	55.1
56	56.1
57	57.1
58	58.1
59	59.1
60	60.1
61	61.1
62	62.1
63	63.1
64	64.1
65	65.1
66	66.1
67	67.1
68	68.1
69	69.1
70	70.1
71	71.1
72	72.1
73	73.1
74	74.1
75	75.1
76	76.1
77	77.1
78	78.1
79	79.1
80	80.1
81	81.1
82	82.1
83	83.1
84	84.1
85	85.1
86	86.1
87	87.1
88	88.1
89	89.1
90	90.1
91	91.1
92	92.1
93	93.1
94	94.1
95	95.1
96	96.1
97	97.1
98	98.1
99	99.1
100	100.1

# EFR32FG Dual Band 2400/868 MHz Radio Bo

Page Title

## RF, Antenna & Power

Document number

**BRD4250B**

Revision
----------

B00

AS	< Cage Code >
Design Created Date: Monday, April 02, 2012	

Sheet Created Date	Monday, April 02, 2012
--------------------	------------------------

Sheet Modified Date	Tuesday, February 09, 2016
---------------------	----------------------------

Sheet  
2 of 4

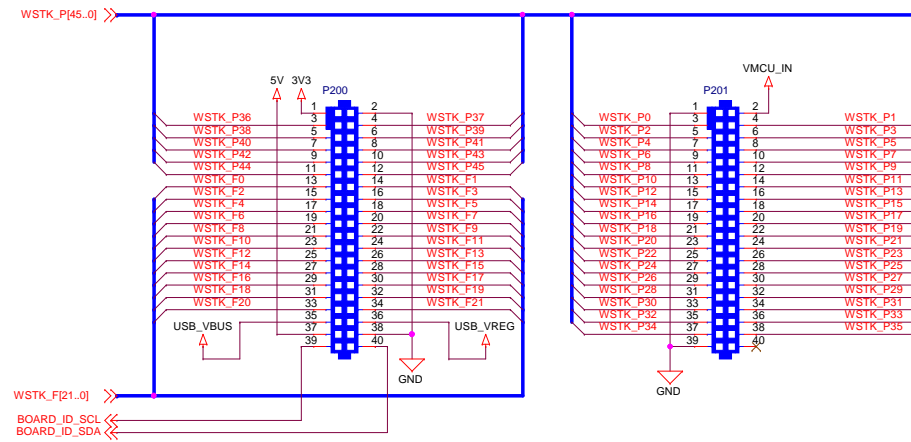
[illegible]

**EFR32 I/O Port Pins**

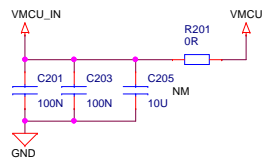
**Serial Flash**

<Schematic Path>  
SCHEMATIC1

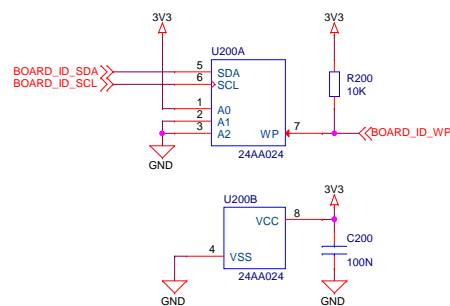
## WSTK Connectors



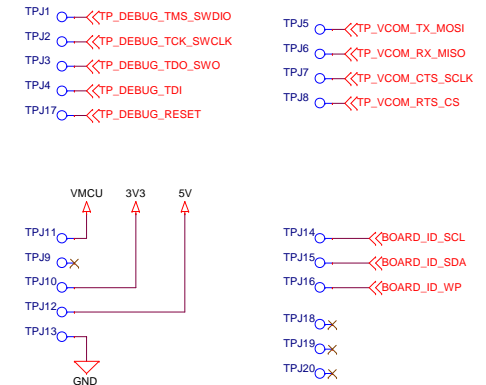
## WSTK Power Decoupling



## Board Identification



## Test Points



<Schematic Path>  
SCHEMATIC1

		Schematic Title	
		EFR32FG Dual Band 2400/868 MHz Radio Boa	
Designed: JSH		Page Title	
Size A3		WSTK Connectors & Board ID	
BOM Doc No: <Cage Code>		Document number	Revision
Design Created Date: Monday, April 02, 2012		BRD4250B	B00
Sheet Created Date: Tuesday, April 03, 2012		Sheet Modified Date: Tuesday, February 09, 2016	Sheet 4 of 4