



EFR32 Flex Gecko Dual Band Radio Board
2.4 GHz / 868 MHz 13 dBm, DCDC to PAVDD


Board Function	Page
Title Page	1
RF, Antenna & Power	2
EFR32 Signal Assignments	3
WSTK Connectors & Board ID	4

Revision History	
Rev.	Description
B00	Initial release.
B01	SubGHz PA supplied from filtered PAVDD.

LEGAL NOTICE:
SILICON LABORATORIES INC. ("SILICON LABS") AND/OR ITS LICENSORS DO NOT WARRANT THE ACCURACY OR COMPLETENESS OF THIS SCHEMATIC OR ANY INFORMATION CONTAINED WITHIN THIS SCHEMATIC. IT IS PROVIDED "AS-IS" FOR REFERENCE ONLY. SILICON LABS DOES NOT WARRANT THAT THIS DESIGN WILL MEET THE SPECIFICATIONS, BE SUITABLE FOR YOUR APPLICATION OR FIT FOR ANY PARTICULAR PURPOSE, OR WILL OPERATE IN YOUR IMPLEMENTATION. SILICON LABS AND ITS LICENSORS DO NOT WARRANT THAT THE DESIGN IMPLIED IN THIS SCHEMATIC IS PRODUCTION-WORTHY. YOU SHOULD COMPLETELY VALIDATE AND TEST YOUR DESIGN IMPLEMENTATION TO CONFIRM SYSTEM FUNCTIONALITY FOR YOUR APPLICATION.



<Schematic Path>
SCHEMATIC1

 SILICON LABS		Schematic Title	
		EFR32FG Dual Band 2400/868 MHz Radio Board	
Designed: JSH		Approved: JNO	
Size A3	BOM Doc No: <Cage Code>	Page Title	
Design Created Date: Monday, April 02, 2012		Document number BRD4250B	Revision B01
Sheet Created Date Monday, April 02, 2012		Sheet Modified Date Tuesday, April 19, 2016	Sheet 1 of 4

EFR32 Pin Mapping

The diagram illustrates the pin mapping for the EFR32 device, showing connections between various pins and internal blocks. The pins are organized into groups: RADIO_PA[5..0], RADIO_PB[15..11], RADIO_PC[11..6], RADIO_PD[15..13], and RADIO_PF[7..0]. The connections are as follows:

Pin Group	Pin	Function	Internal Block
RADIO_PA[5..0]	RADIO_PA0	US0_TX#0	EXP_HEADER12
	RADIO_PA1	US0_RX#0	EXP_HEADER14
	RADIO_PA2	US0_CLK#0	EXP_HEADER3
	RADIO_PA3	US0_CS#0	EXP_HEADER5
	RADIO_PA4	US1_CS#1	WSTK_P16
RADIO_PB[15..11]	RADIO_PB11	FRC_DCLK#6	WSTK_P18
	RADIO_PB12	FRC_DOUT#6	WSTK_P20
	RADIO_PB13	FRC_DFRAME#6	WSTK_P22
	RADIO_PB14		LFXTAL_P
	RADIO_PB15		LFXTAL_N
RADIO_PC[11..6]	RADIO_PC6	US1_TX#11	FLASH_MOSI
	RADIO_PC7	US1_RX#11	FLASH_MISO
	RADIO_PC8	US1_CLK#11	FLASH_SCLK
	RADIO_PC9	US1_CS#11	EXP_HEADER10
	RADIO_PC10	I2C0_SCL#14	EXP_HEADER15
RADIO_PD[15..13]	RADIO_PD13	LETIM0_OUT0#23	WSTK_P31
	RADIO_PD14	US1_CS#19	WSTK_P33
	RADIO_PD15		WSTK_P35
	RADIO_PD16		WSTK_P37
	RADIO_PD17		WSTK_P39
RADIO_PF[7..0]	RADIO_PF0	DBG_SWCLK#0	WSTK_P24
	RADIO_PF1	DBG_SWDIOTMS#0	WSTK_P26
	RADIO_PF2	DBG_SWO#0/DBG_TDO#0	WSTK_P28
	RADIO_PF3	DBG_TDI#0	WSTK_P10
	RADIO_PF4		WSTK_P8

The diagram also shows the connections to the WSTK blocks (WSTK_P1, WSTK_P3, WSTK_P5, WSTK_P7, WSTK_P9, WSTK_P11, WSTK_P13, WSTK_P15, WSTK_P17, WSTK_P19, WSTK_P21, WSTK_P23, WSTK_P25, WSTK_P27, WSTK_P29, WSTK_P31, WSTK_P33, WSTK_P35, WSTK_P37, WSTK_P39, WSTK_P41, WSTK_P43, WSTK_P45, WSTK_P47, WSTK_P49, WSTK_P51, WSTK_P53, WSTK_P55, WSTK_P57, WSTK_P59, WSTK_P61, WSTK_P63, WSTK_P65, WSTK_P67, WSTK_P69, WSTK_P71, WSTK_P73, WSTK_P75, WSTK_P77, WSTK_P79, WSTK_P81, WSTK_P83, WSTK_P85, WSTK_P87, WSTK_P89, WSTK_P91, WSTK_P93, WSTK_P95, WSTK_P97, WSTK_P99, WSTK_P101, WSTK_P103, WSTK_P105, WSTK_P107, WSTK_P109, WSTK_P111, WSTK_P113, WSTK_P115, WSTK_P117, WSTK_P119, WSTK_P121, WSTK_P123, WSTK_P125, WSTK_P127, WSTK_P129, WSTK_P131, WSTK_P133, WSTK_P135, WSTK_P137, WSTK_P139, WSTK_P141, WSTK_P143, WSTK_P145, WSTK_P147, WSTK_P149, WSTK_P151, WSTK_P153, WSTK_P155, WSTK_P157, WSTK_P159, WSTK_P161, WSTK_P163, WSTK_P165, WSTK_P167, WSTK_P169, WSTK_P171, WSTK_P173, WSTK_P175, WSTK_P177, WSTK_P179, WSTK_P181, WSTK_P183, WSTK_P185, WSTK_P187, WSTK_P189, WSTK_P191, WSTK_P193, WSTK_P195, WSTK_P197, WSTK_P199, WSTK_P201, WSTK_P203, WSTK_P205, WSTK_P207, WSTK_P209, WSTK_P211, WSTK_P213, WSTK_P215, WSTK_P217, WSTK_P219, WSTK_P221, WSTK_P223, WSTK_P225, WSTK_P227, WSTK_P229, WSTK_P231, WSTK_P233, WSTK_P235, WSTK_P237, WSTK_P239, WSTK_P241, WSTK_P243, WSTK_P245, WSTK_P247, WSTK_P249, WSTK_P251, WSTK_P253, WSTK_P255, WSTK_P257, WSTK_P259, WSTK_P261, WSTK_P263, WSTK_P265, WSTK_P267, WSTK_P269, WSTK_P271, WSTK_P273, WSTK_P275, WSTK_P277, WSTK_P279, WSTK_P281, WSTK_P283, WSTK_P285, WSTK_P287, WSTK_P289, WSTK_P291, WSTK_P293, WSTK_P295, WSTK_P297, WSTK_P299, WSTK_P301, WSTK_P303, WSTK_P305, WSTK_P307, WSTK_P309, WSTK_P311, WSTK_P313, WSTK_P315, WSTK_P317, WSTK_P319, WSTK_P321, WSTK_P323, WSTK_P325, WSTK_P327, WSTK_P329, WSTK_P331, WSTK_P333, WSTK_P335, WSTK_P337, WSTK_P339, WSTK_P341, WSTK_P343, WSTK_P345, WSTK_P347, WSTK_P349, WSTK_P351, WSTK_P353, WSTK_P355, WSTK_P357, WSTK_P359, WSTK_P361, WSTK_P363, WSTK_P365, WSTK_P367, WSTK_P369, WSTK_P371, WSTK_P373, WSTK_P375, WSTK_P377, WSTK_P379, WSTK_P381, WSTK_P383, WSTK_P385, WSTK_P387, WSTK_P389, WSTK_P391, WSTK_P393, WSTK_P395, WSTK_P397, WSTK_P399, WSTK_P401, WSTK_P403, WSTK_P405, WSTK_P407, WSTK_P409, WSTK_P411, WSTK_P413, WSTK_P415, WSTK_P417, WSTK_P419, WSTK_P421, WSTK_P423, WSTK_P425, WSTK_P427, WSTK_P429, WSTK_P431, WSTK_P433, WSTK_P435, WSTK_P437, WSTK_P439, WSTK_P441, WSTK_P443, WSTK_P445, WSTK_P447, WSTK_P449, WSTK_P451, WSTK_P453, WSTK_P455, WSTK_P457, WSTK_P459, WSTK_P461, WSTK_P463, WSTK_P465, WSTK_P467, WSTK_P469, WSTK_P471, WSTK_P473, WSTK_P475, WSTK_P477, WSTK_P479, WSTK_P481, WSTK_P483, WSTK_P485, WSTK_P487, WSTK_P489, WSTK_P491, WSTK_P493, WSTK_P495, WSTK_P497, WSTK_P499, WSTK_P501, WSTK_P503, WSTK_P505, WSTK_P507, WSTK_P509, WSTK_P511, WSTK_P513, WSTK_P515, WSTK_P517, WSTK_P519, WSTK_P521, WSTK_P523, WSTK_P525, WSTK_P527, WSTK_P529, WSTK_P531, WSTK_P533, WSTK_P535, WSTK_P537, WSTK_P539, WSTK_P541, WSTK_P543, WSTK_P545, WSTK_P547, WSTK_P549, WSTK_P551, WSTK_P553, WSTK_P555, WSTK_P557, WSTK_P559, WSTK_P561, WSTK_P563, WSTK_P565, WSTK_P567, WSTK_P569, WSTK_P571, WSTK_P573, WSTK_P575, WSTK_P577, WSTK_P579, WSTK_P581, WSTK_P583, WSTK_P585, WSTK_P587, WSTK_P589, WSTK_P591, WSTK_P593, WSTK_P595, WSTK_P597, WSTK_P599, WSTK_P601, WSTK_P603, WSTK_P605, WSTK_P607, WSTK_P609, WSTK_P611, WSTK_P613, WSTK_P615, WSTK_P617, WSTK_P619, WSTK_P621, WSTK_P623, WSTK_P625, WSTK_P627, WSTK_P629, WSTK_P631, WSTK_P633, WSTK_P635, WSTK_P637, WSTK_P639, WSTK_P641, WSTK_P643, WSTK_P645, WSTK_P647, WSTK_P649, WSTK_P651, WSTK_P653, WSTK_P655, WSTK_P657, WSTK_P659, WSTK_P661, WSTK_P663, WSTK_P665, WSTK_P667, WSTK_P669, WSTK_P671, WSTK_P673, WSTK_P675, WSTK_P677, WSTK_P679, WSTK_P681, WSTK_P683, WSTK_P685, WSTK_P687, WSTK_P689, WSTK_P691, WSTK_P693, WSTK_P695, WSTK_P697, WSTK_P699, WSTK_P701, WSTK_P703, WSTK_P705, WSTK_P707, WSTK_P709, WSTK_P711, WSTK_P713, WSTK_P715, WSTK_P717, WSTK_P719, WSTK_P721, WSTK_P723, WSTK_P725,

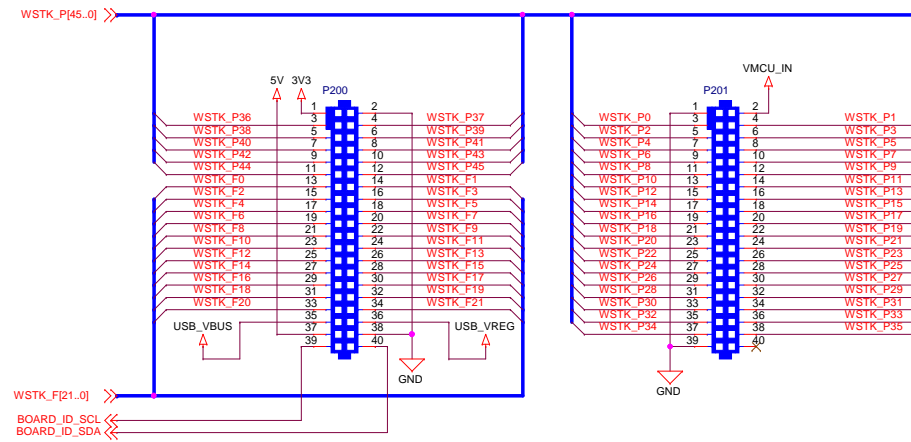
EFR32 I/O Port Pins

Serial Flash

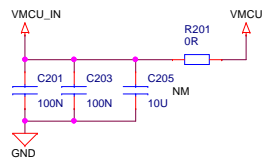
<Schematic Path>
SCHEMATIC1

Schematic Title	
EFR32FG Dual Band 2400/868 MHz Radio Bo	
Page Title	
EFR32 I/O Port Connections	
Document number	
BRD4250B	
Size	Revision
A3	B01
BOM Doc No:	Sheet Created Date
<Cage Code>	Wednesday, April 11, 2012
Design:	Sheet Modified Date
JSH	Tuesday, April 19, 2016
Approved:	Sheet
JNO	3 of 4

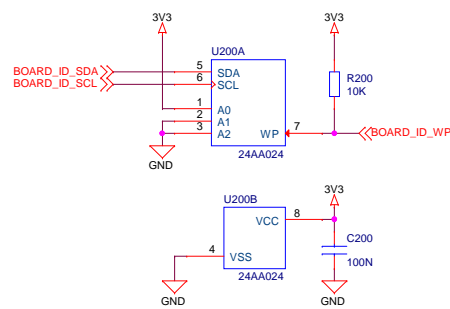
WSTK Connectors



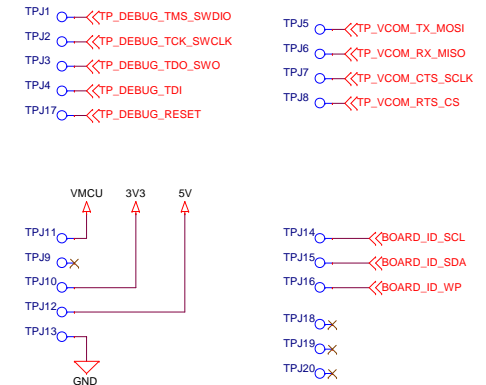
WSTK Power Decoupling



Board Identification



Test Points



<Schematic Path>
SCHEMATIC1

		Schematic Title	
		EFR32FG Dual Band 2400/868 MHz Radio Boa	
Designed: JSH		Page Title	
Size A3		WSTK Connectors & Board ID	
BOM Doc No: <Cage Code>		Document number	Revision
Design Created Date: Monday, April 02, 2012		BRD4250B	B01
Sheet Created Date: Tuesday, April 03, 2012		Sheet Modified Date: Tuesday, April 19, 2016	Sheet 4 of 4