



LEGAL NOTICE:
SILICON LABORATORIES INC. ("SILICON LABS") AND/OR ITS LICENSORS DO NOT WARRANT THE ACCURACY OR COMPLETENESS OF THIS SCHEMATIC OR ANY INFORMATION CONTAINED WITHIN THIS SCHEMATIC. IT IS PROVIDED "AS-IS" FOR REFERENCE ONLY. SILICON LABS DOES NOT WARRANT THAT THIS DESIGN WILL MEET THE SPECIFICATIONS, BE SUITABLE FOR YOUR APPLICATION OR FIT FOR ANY PARTICULAR PURPOSE, OR WILL OPERATE IN YOUR IMPLEMENTATION. SILICON LABS AND ITS LICENSORS DO NOT WARRANT THAT THE DESIGN IMPLIED IN THIS SCHEMATIC IS PRODUCTION-WORTHY. YOU SHOULD COMPLETELY VALIDATE AND TEST YOUR DESIGN IMPLEMENTATION TO CONFIRM SYSTEM FUNCTIONALITY FOR YOUR APPLICATION.



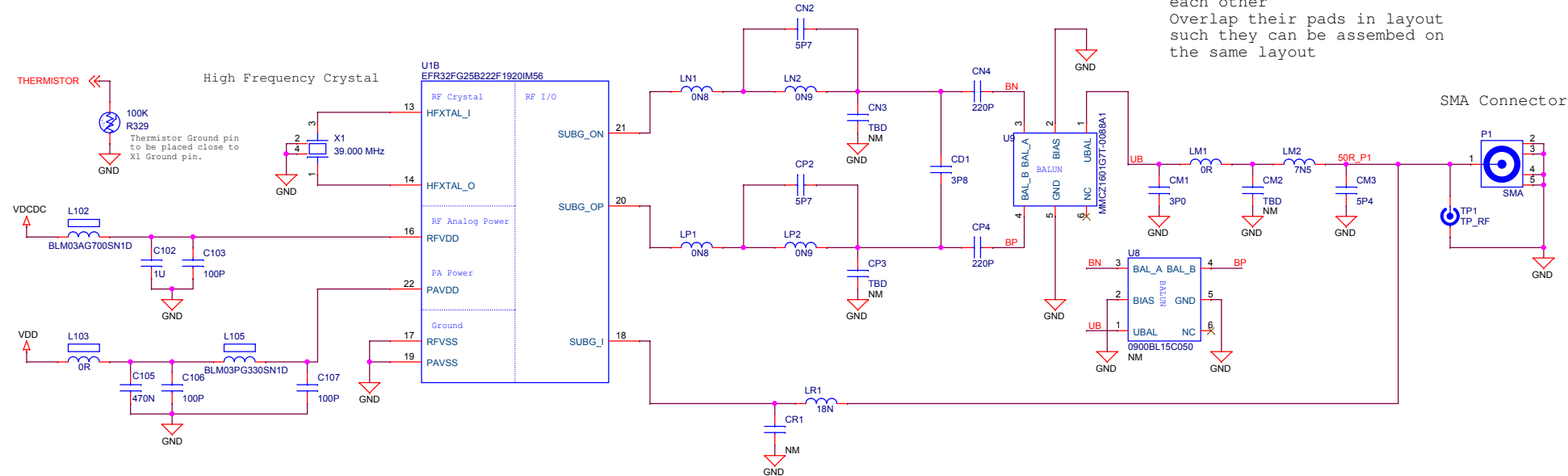
Revision History

Rev.	Description
------	-------------

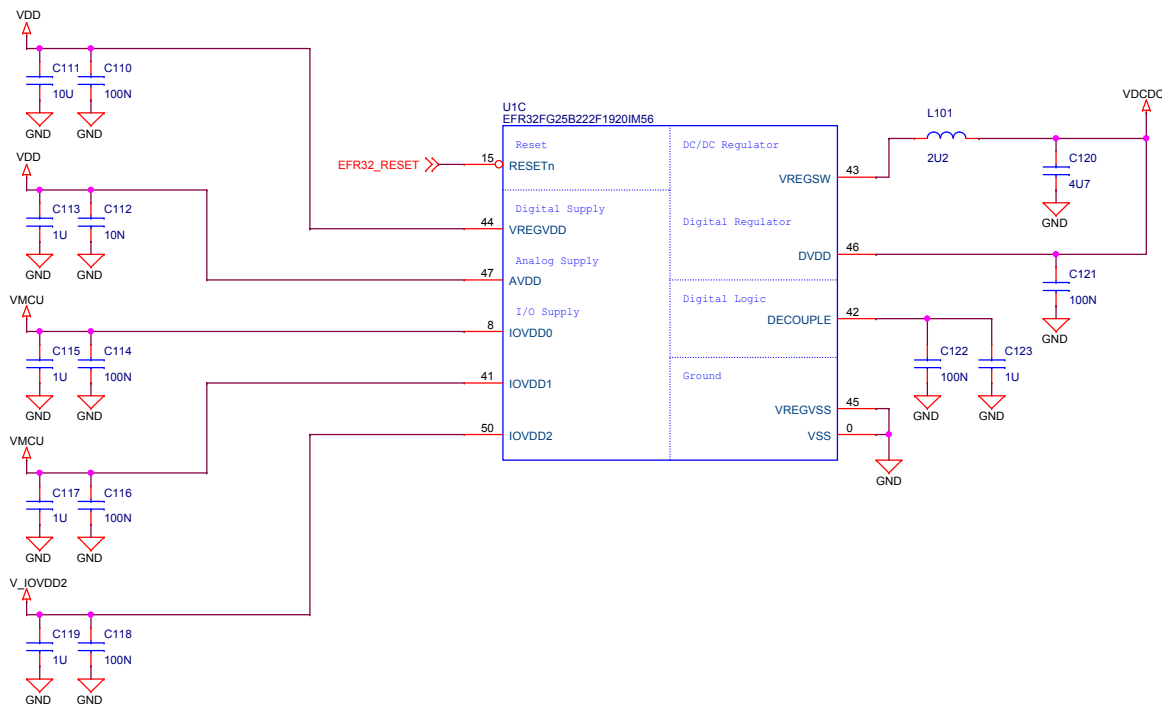
A00	Initial release.
-----	------------------

		Board Name	
SILICON LABS		FG25 915 MHz 14 dBm Radio Board	
Designed TAB		Page Title	
Approved RGU		Title Page	
Size A3	Sheet Modified Date Wednesday, November 17, 2021	Board Number BRD4270B	Revision A00
COPYRIGHT SILICON LABORATORIES INC. 2020 CONFIDENTIAL – SUBJECT TO TERMS OF USE			Sheet 1 of 5

Radio Interface

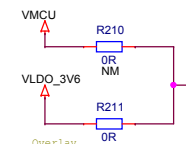


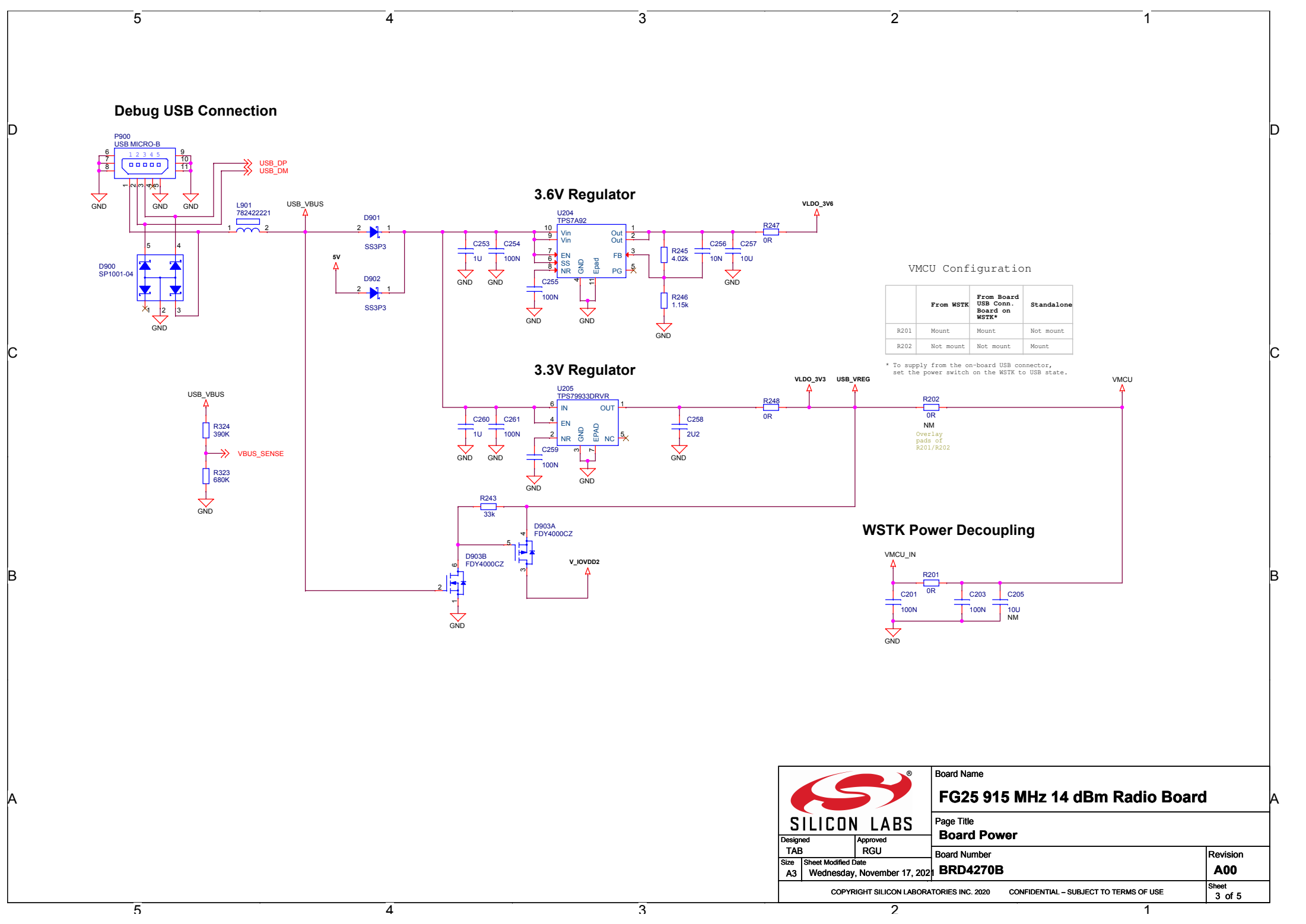
Power & Decoupling



VDD Configuration

	Power Config 1 VMCU to VDD	Power Config 2 VLDO_3V6 to VDD
R210	Mount	Not mount
R211	Not mount	Mount



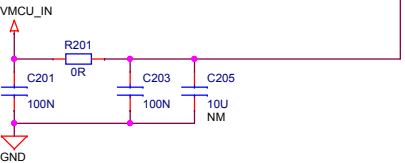



VMCU Configuration

	From WSTK	From Board USB Conn. Board on WSTK*	Standalone
R201	Mount	Mount	Not mount
R202	Not mount	Not mount	Mount

* To supply from the on-board USB connector, set the power switch on the WSTK to USB state.

WSTK Power Decoupling





SILICON LABS

Board Name
FG25 915 MHz 14 dBm Radio Board

Page Title
Board Power

Board Number
BRD4270B

Revision
A00

Designed
TAB

Approved
RGU

Size
A3

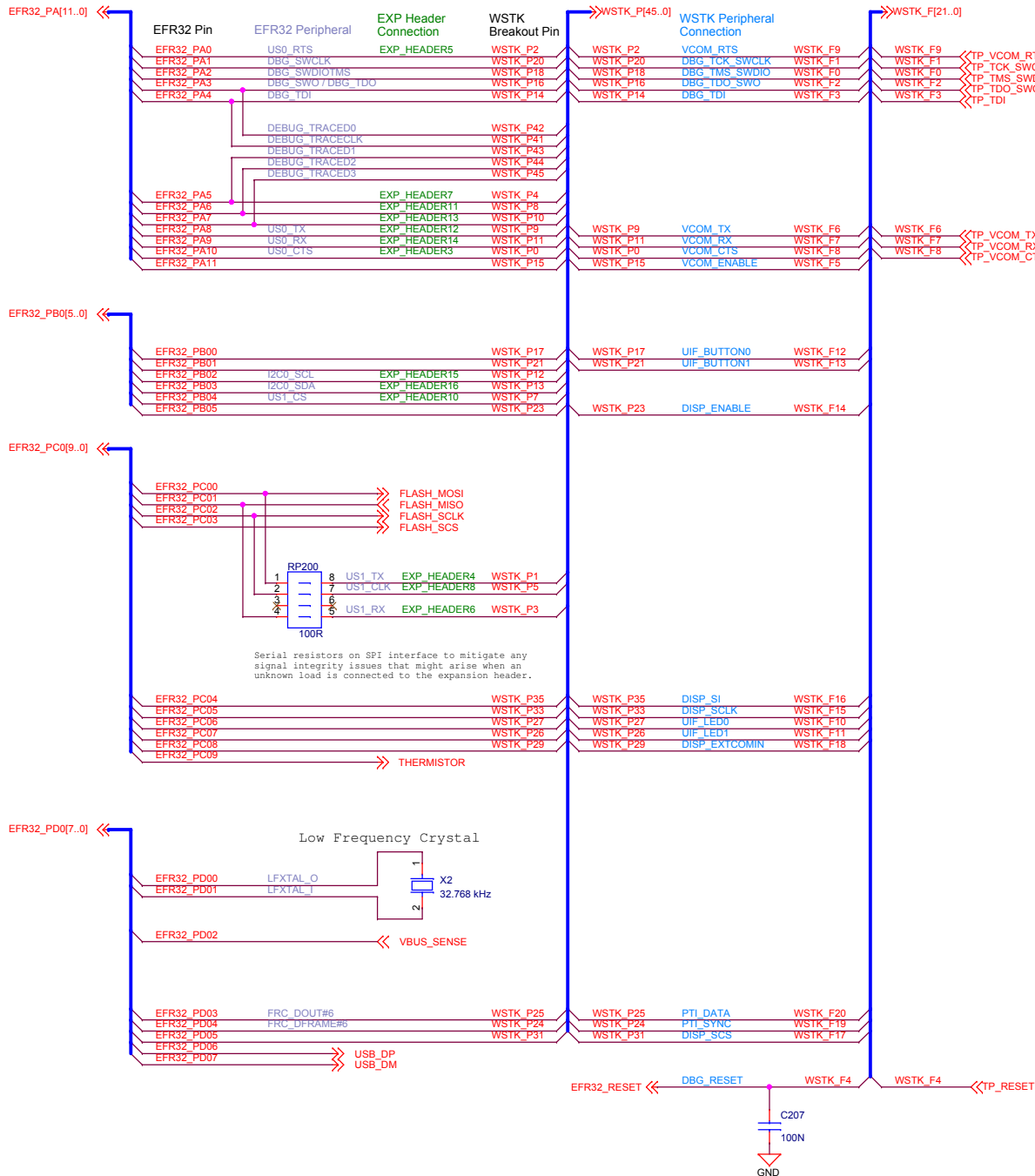
Sheet Modified Date
Wednesday, November 17, 2021

COPYRIGHT SILICON LABORATORIES INC. 2020

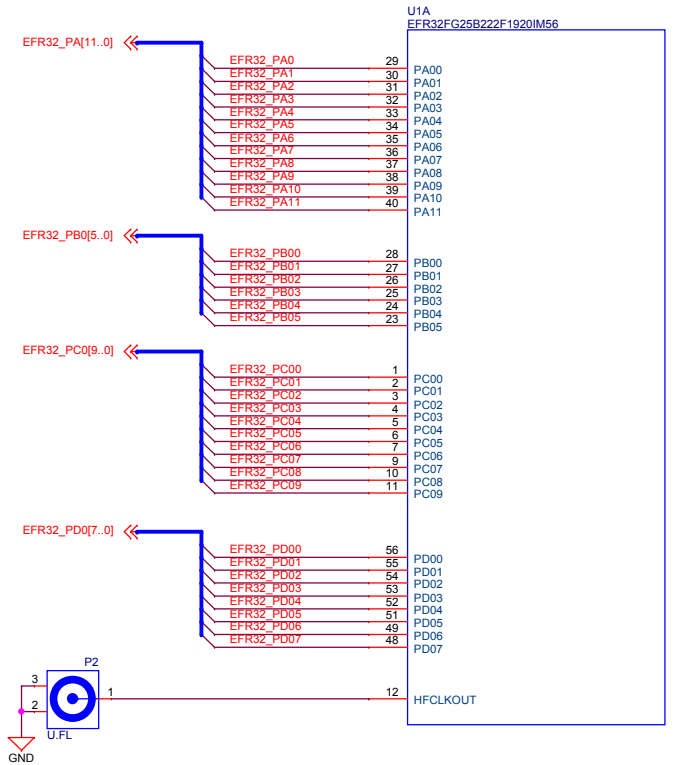
CONFIDENTIAL – SUBJECT TO TERMS OF USE

Sheet
3 of 5

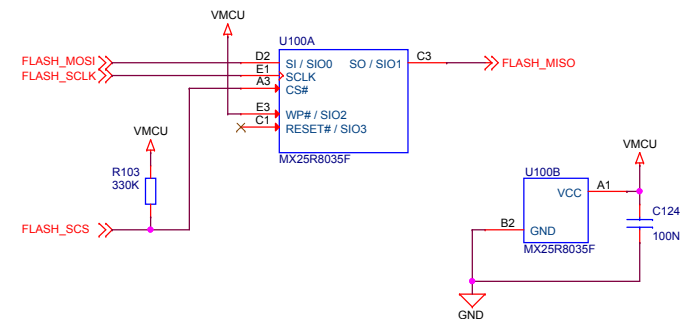
Pin Mapping



I/O Port Pins

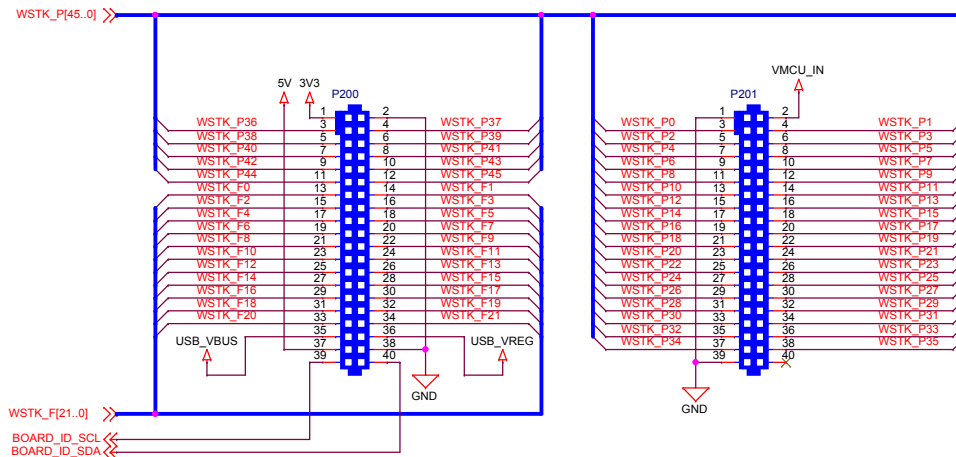


Serial Flash

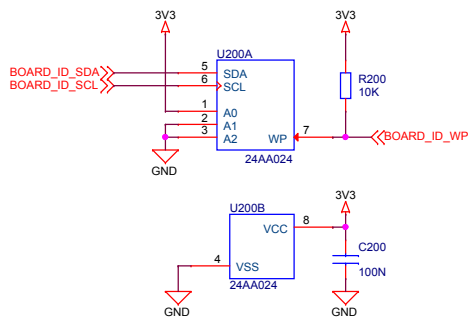


		Board Name	
		FG25 915 MHz 14 dBm Radio Board	
Designed TAB		Page Title	
Size A3		EFR32 Signal Assignments	
Sheet Modified Date		Board Number	
Wednesday, November 17, 2021		BRD4270B	
Revision		A00	
Sheet 4 of 5		Copyright Silicon Laboratories Inc. 2020	
		CONFIDENTIAL - SUBJECT TO TERMS OF USE	

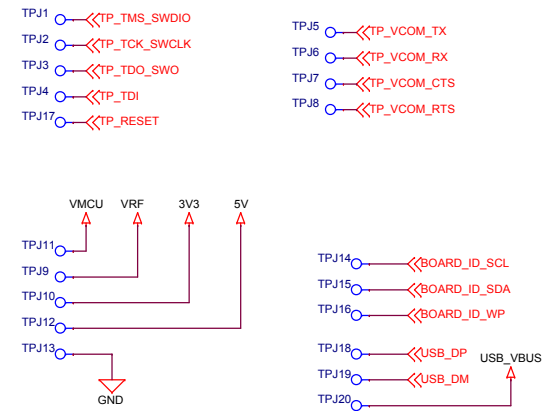
WSTK Connectors




Board Identification



Test Points



		Board Name	
		FG25 915 MHz 14 dBm Radio Board	
Designed TAB		Page Title	
Size A3		WSTK Connectors & Board ID	
Sheet Modified Date		Board Number	
Wednesday, November 17, 2021		BRD4270B	
Revision		A00	
Copyright Silicon Laboratories Inc. 2020		Sheet 5 of 5	