



## EFR32FG25 Radio Board

915 MHz +14 dBm

### Board Function

### Page

Title Page

1

RF & Power

2

Board Power

3

EFR32 Signal Assignments

4

WSTK Connectors & Board ID

5



LEGAL NOTICE:  
SILICON LABORATORIES INC. ("SILICON LABS") AND/OR ITS LICENSORS DO NOT WARRANT THE ACCURACY OR COMPLETENESS OF THIS SCHEMATIC OR ANY INFORMATION CONTAINED WITHIN THIS SCHEMATIC. IT IS PROVIDED "AS-IS" FOR REFERENCE ONLY. SILICON LABS DOES NOT WARRANT THAT THIS DESIGN WILL MEET THE SPECIFICATIONS, BE SUITABLE FOR YOUR APPLICATION OR FIT FOR ANY PARTICULAR PURPOSE, OR WILL OPERATE IN YOUR IMPLEMENTATION. SILICON LABS AND ITS LICENSORS DO NOT WARRANT THAT THE DESIGN IMPLIED IN THIS SCHEMATIC IS PRODUCTION-WORTHY. YOU SHOULD COMPLETELY VALIDATE AND TEST YOUR DESIGN IMPLEMENTATION TO CONFIRM SYSTEM FUNCTIONALITY FOR YOUR APPLICATION.

## Revision History

### Rev. Description

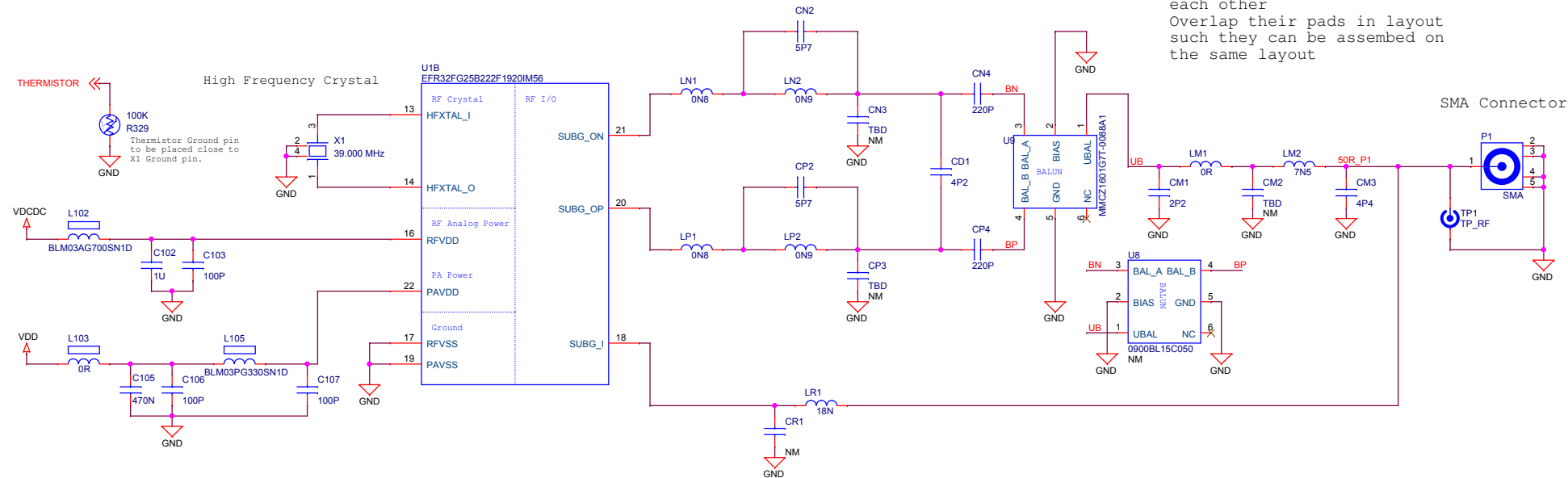
A00 Initial release.

A01 Updated X1 OPN. Fixed U8/U9 and P900 footprints.

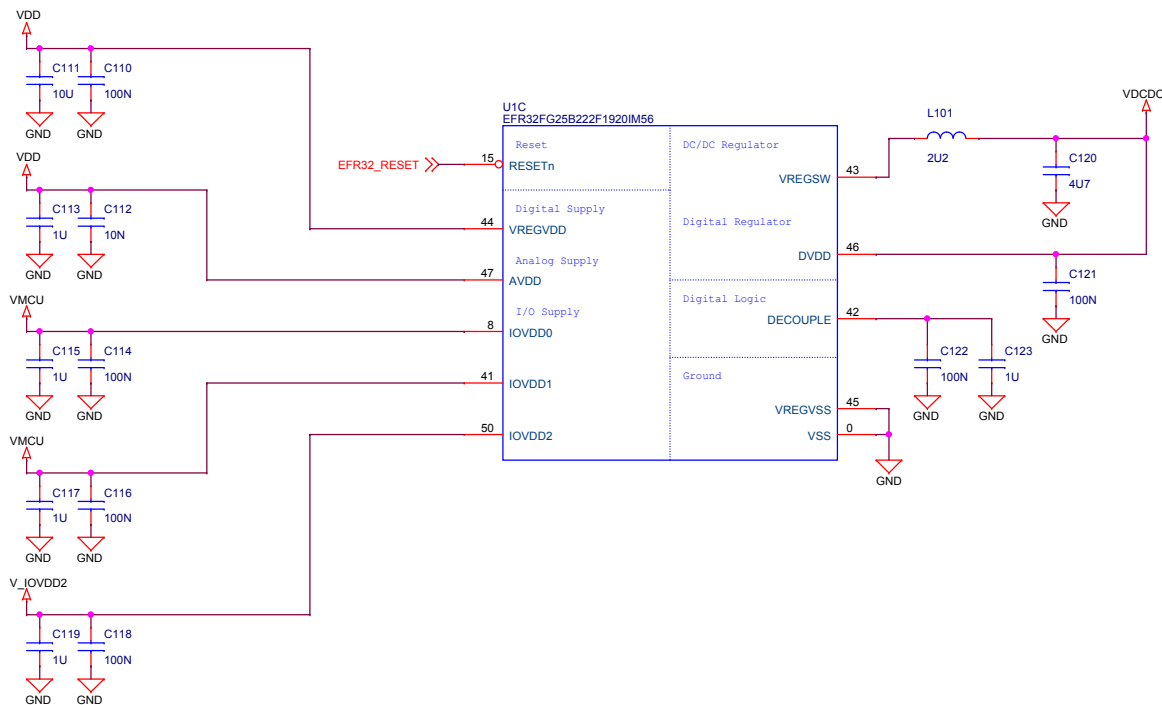
A02 Upd. matching. Added R225.

		Board Name	
SILICON LABS		FG25 915 MHz 14 dBm Radio Board	
Designed TAB		Page Title Title Page	
Approved RGU		Board Number BRD4270B	
Size A3	Sheet Modified Date Monday, March 14, 2022	Revision A02	
COPYRIGHT SILICON LABORATORIES INC. 2020		CONFIDENTIAL – SUBJECT TO TERMS OF USE	
		Sheet 1 of 5	

## Radio Interface

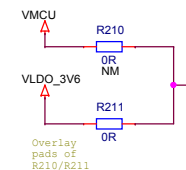


## Power & Decoupling

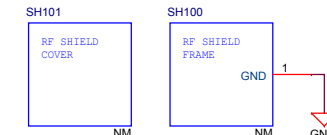


## VDD Configuration

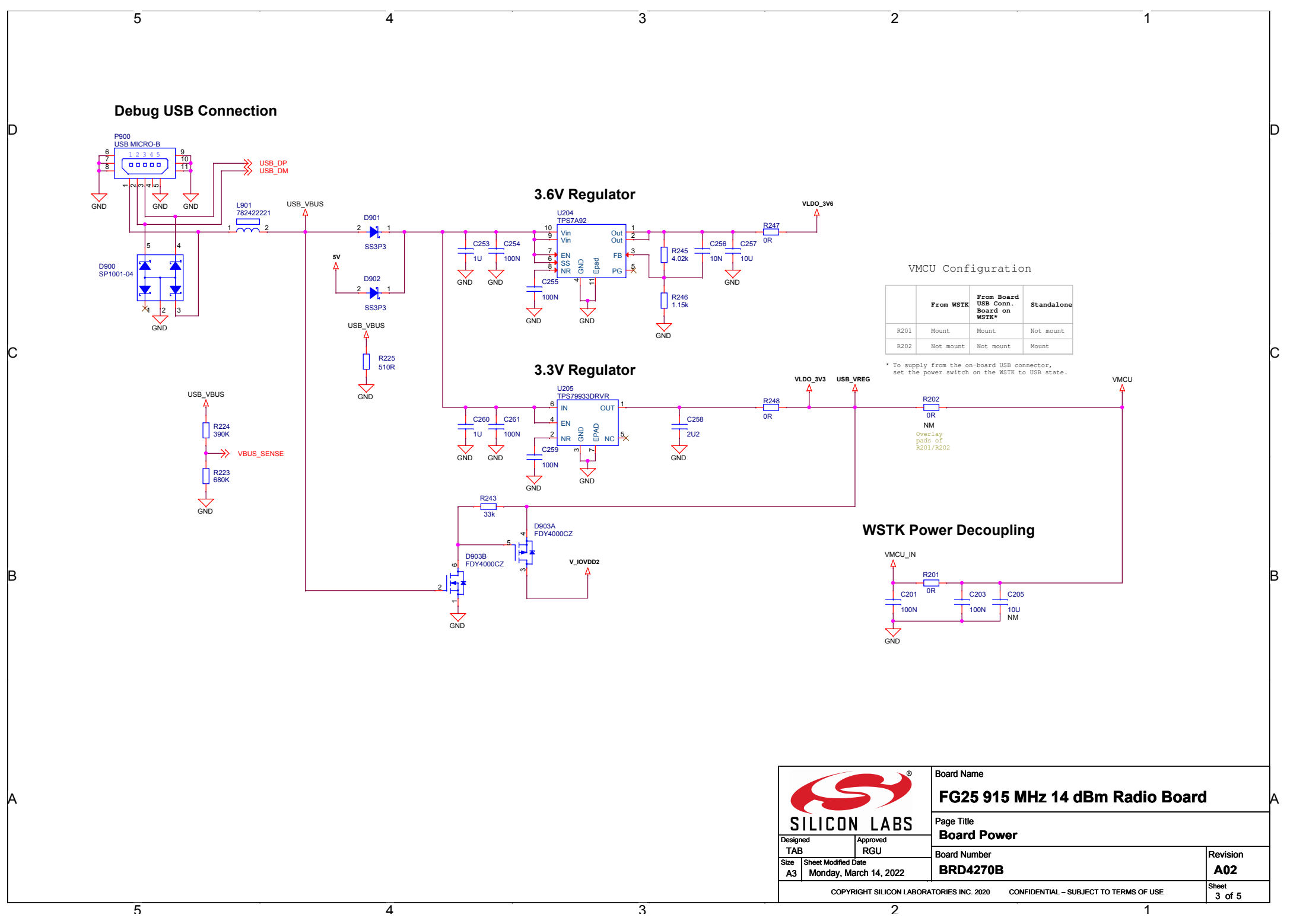
	Power Config 1 VMCU to VDD	Power Config 2 VDDO_3V6 to VDD
R210	Mount	Not mount
R211	Not mount	Mount



## RF Shielding



		Board Name	
		FG25 915 MHz 14 dBm Radio Board	
Designed TAB		Page Title	
Size A3		RF & Power	
Sheet Modified Date Monday, March 14, 2022		Board Number	
		BRD4270B	
		Revision	
		A02	
		Sheet 2 of 5	



Debug USB Connection

3.6V Regulator


3.3V Regulator

VMCU Configuration

	From WSTK	From Board USB Conn. Board on WSTK*	Standalone
R201	Mount	Mount	Not mount
R202	Not mount	Not mount	Mount

\* To supply from the on-board USB connector, set the power switch on the WSTK to USB state.

WSTK Power Decoupling



**SILICON LABS**

Board Name  
**FG25 915 MHz 14 dBm Radio Board**

Page Title  
**Board Power**

Board Number  
**BRD4270B**

Revision  
**A02**

Designed  
TAB

Approved  
RGU

Size  
A3

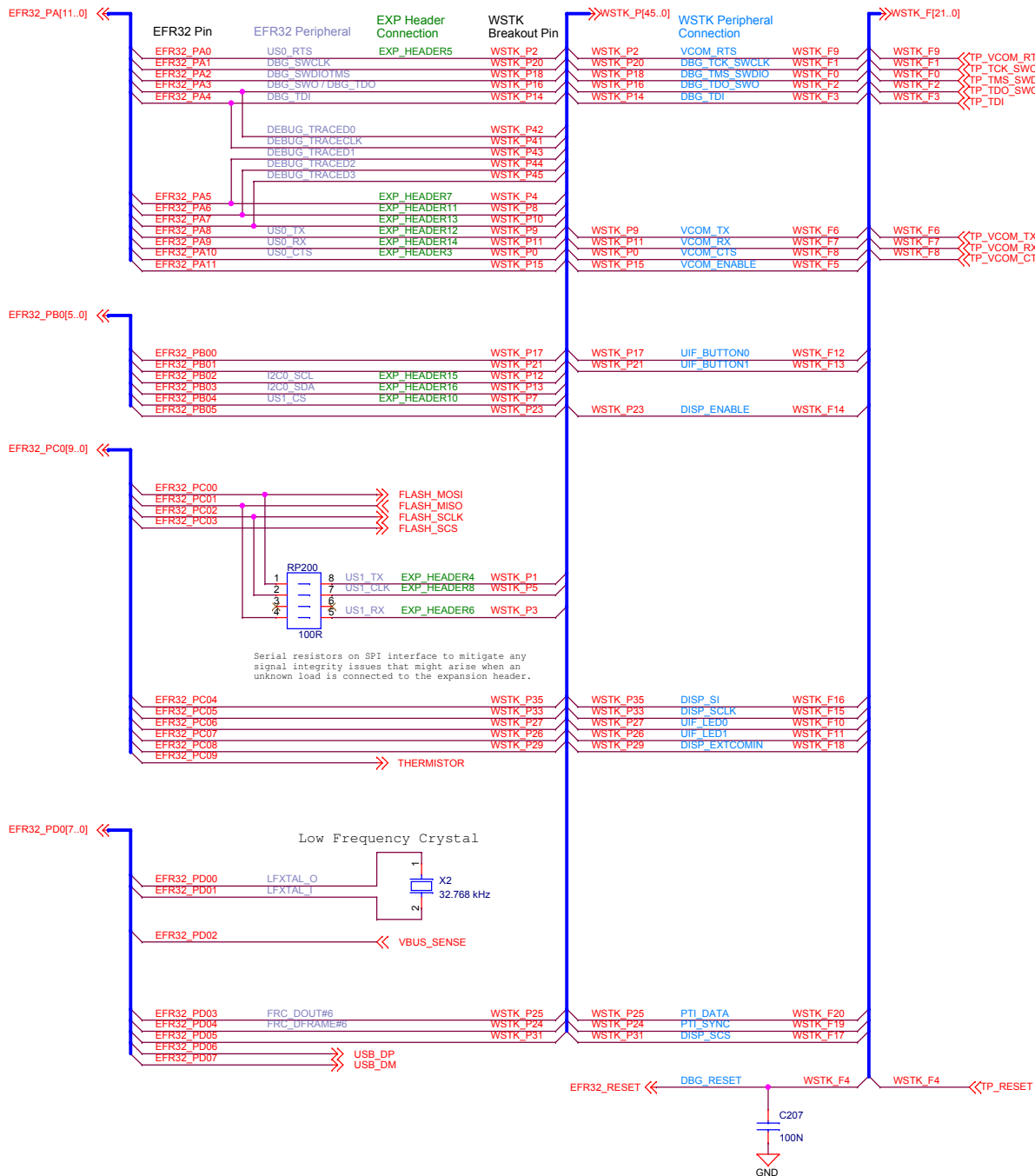
Sheet Modified Date  
Monday, March 14, 2022

COPYRIGHT SILICON LABORATORIES INC. 2020

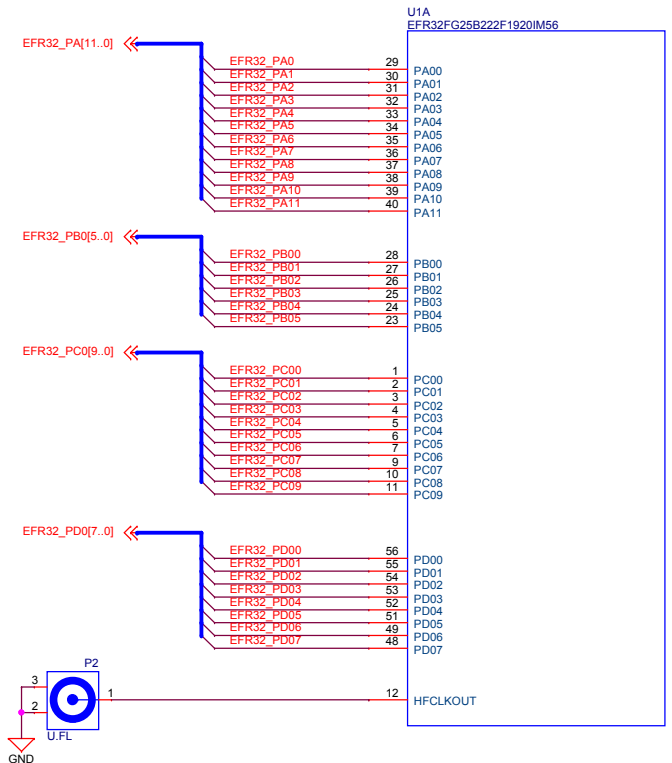
CONFIDENTIAL – SUBJECT TO TERMS OF USE

Sheet  
3 of 5

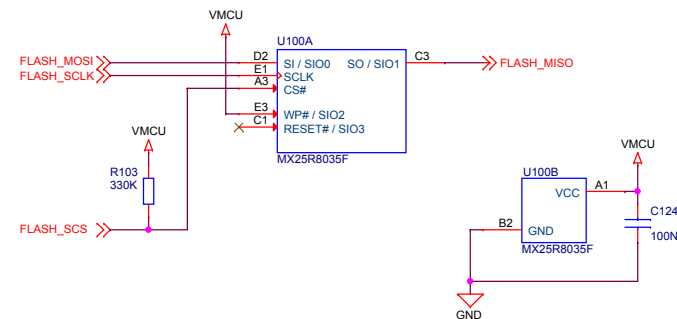
## Pin Mapping



## I/O Port Pins

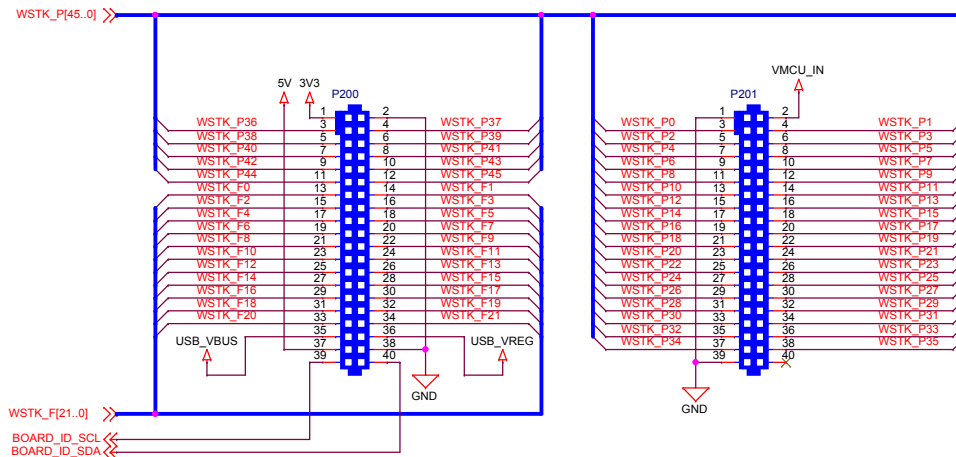


## Serial Flash

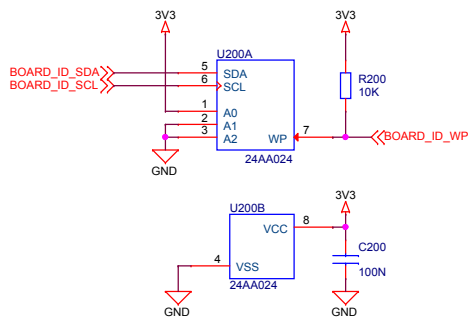


		Board Name	
		FG25 915 MHz 14 dBm Radio Board	
Designed TAB		Page Title	
Approved RGU		EFR32 Signal Assignments	
Size A3		Board Number	
Sheet Modified Date		BRD4270B	
Monday, March 14, 2022		Revision	
		A02	
COPYRIGHT SILICON LABORATORIES INC. 2020		CONFIDENTIAL – SUBJECT TO TERMS OF USE	
		Sheet 4 of 5	

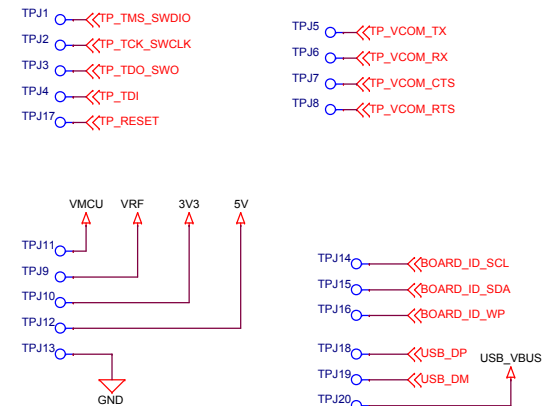
# WSTK Connectors




## Board Identification



## Test Points



		Board Name	
		FG25 915 MHz 14 dBm Radio Board	
Designed TAB		Page Title	
Size A3		WSTK Connectors & Board ID	
Sheet Modified Date Monday, March 14, 2022		Board Number	Revision
		BRD4270B	A02
COPYRIGHT SILICON LABORATORIES INC. 2020		CONFIDENTIAL – SUBJECT TO TERMS OF USE	
		Sheet 5 of 5	