



## EFR32FG25 Radio Board

915 MHz +14 dBm

### Board Function

### Page

Title Page

1

RF & Power

2

Board Power

3

EFR32 Signal Assignments

4

WSTK Connectors & Board ID

5



LEGAL NOTICE:  
SILICON LABORATORIES INC. ("SILICON LABS") AND/OR ITS LICENSORS DO NOT WARRANT THE ACCURACY OR COMPLETENESS OF THIS SCHEMATIC OR ANY INFORMATION CONTAINED WITHIN THIS SCHEMATIC. IT IS PROVIDED "AS-IS" FOR REFERENCE ONLY. SILICON LABS DOES NOT WARRANT THAT THIS DESIGN WILL MEET THE SPECIFICATIONS, BE SUITABLE FOR YOUR APPLICATION OR FIT FOR ANY PARTICULAR PURPOSE, OR WILL OPERATE IN YOUR IMPLEMENTATION. SILICON LABS AND ITS LICENSORS DO NOT WARRANT THAT THE DESIGN IMPLIED IN THIS SCHEMATIC IS PRODUCTION-WORTHY. YOU SHOULD COMPLETELY VALIDATE AND TEST YOUR DESIGN IMPLEMENTATION TO CONFIRM SYSTEM FUNCTIONALITY FOR YOUR APPLICATION.

## Revision History

### Rev. Description


A00 Initial release.

A01 Updated X1 OPN. Fixed U8/U9 and P900 footprints.

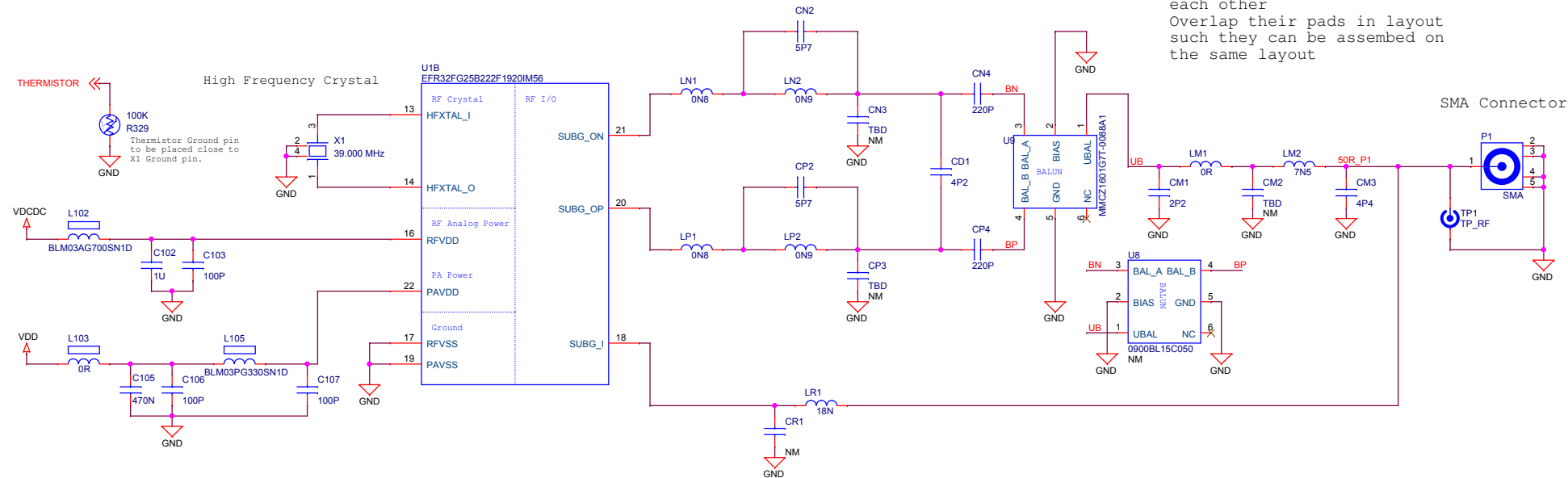
A02 Upd. matching. Added R225.

A03 Release with U1 not mounted.

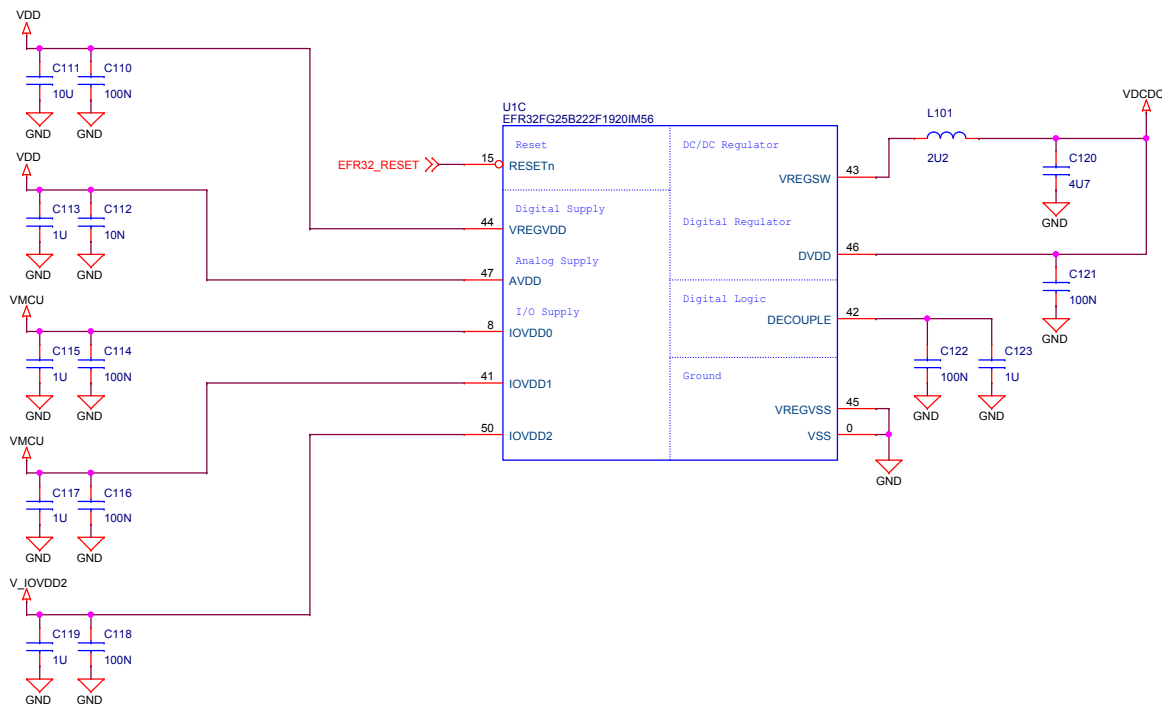
A04 Release with U1 mounted. Updated U1 OPN.

 <b>SILICON LABS</b>		Board Name		<b>FG25 915 MHz 14 dBm Radio Board</b>	
		Page Title		<b>Title Page</b>	
Designed <b>TAB</b>		Approved <b>RGU</b>		Board Number	
Size <b>A3</b>		Sheet Modified Date <b>Wednesday, June 29, 2022</b>			Revision <b>A04</b>
COPYRIGHT SILICON LABORATORIES INC. 2020				CONFIDENTIAL – SUBJECT TO TERMS OF USE	
				Sheet 1 of 5	

## Radio Interface

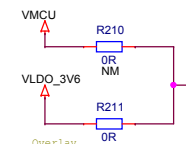


## Power & Decoupling

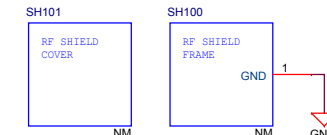


## VDD Configuration

	Power Config 1 VMCU to VDD	Power Config 2 VLDO_3V6 to VDD
R210	Mount	Not mount
R211	Not mount	Mount

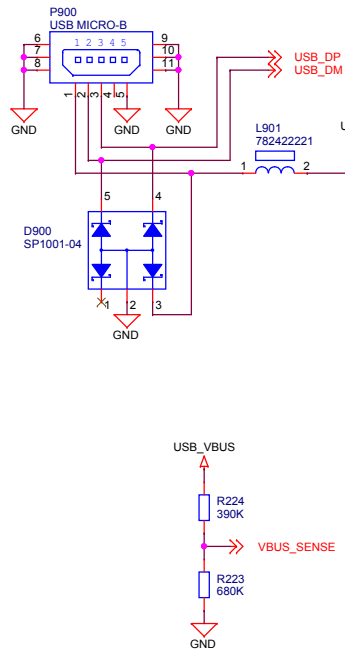


## RF Shielding

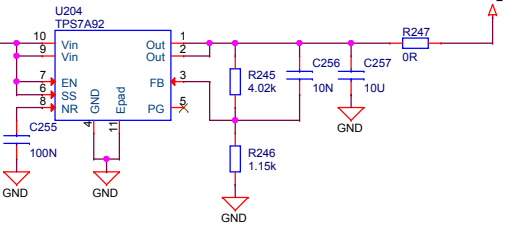


		Board Name	
		FG25 915 MHz 14 dBm Radio Board	
Designed TAB		Page Title	
Size A3		RF & Power	
Sheet Modified Date		Board Number	
Wednesday, June 29, 2022		BRD4270B	
Revision		A04	
Copyright Silicon Laboratories Inc. 2020		CONFIDENTIAL - SUBJECT TO TERMS OF USE	
Sheet 2 of 5			

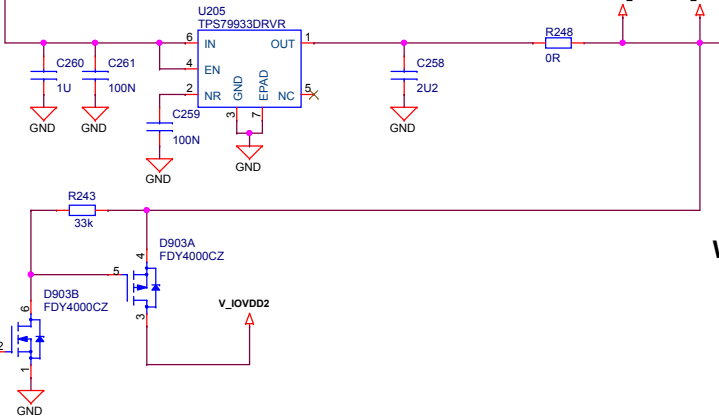
## Debug USB Connection



## 3.6V Regulator



## 3.3V Regulator

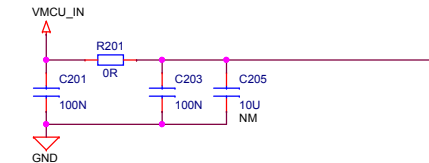



## VMCU Configuration

	From WSTK	From Board USB Conn. Board on WSTK*	Standalone
R201	Mount	Mount	Not mount
R202	Not mount	Not mount	Mount

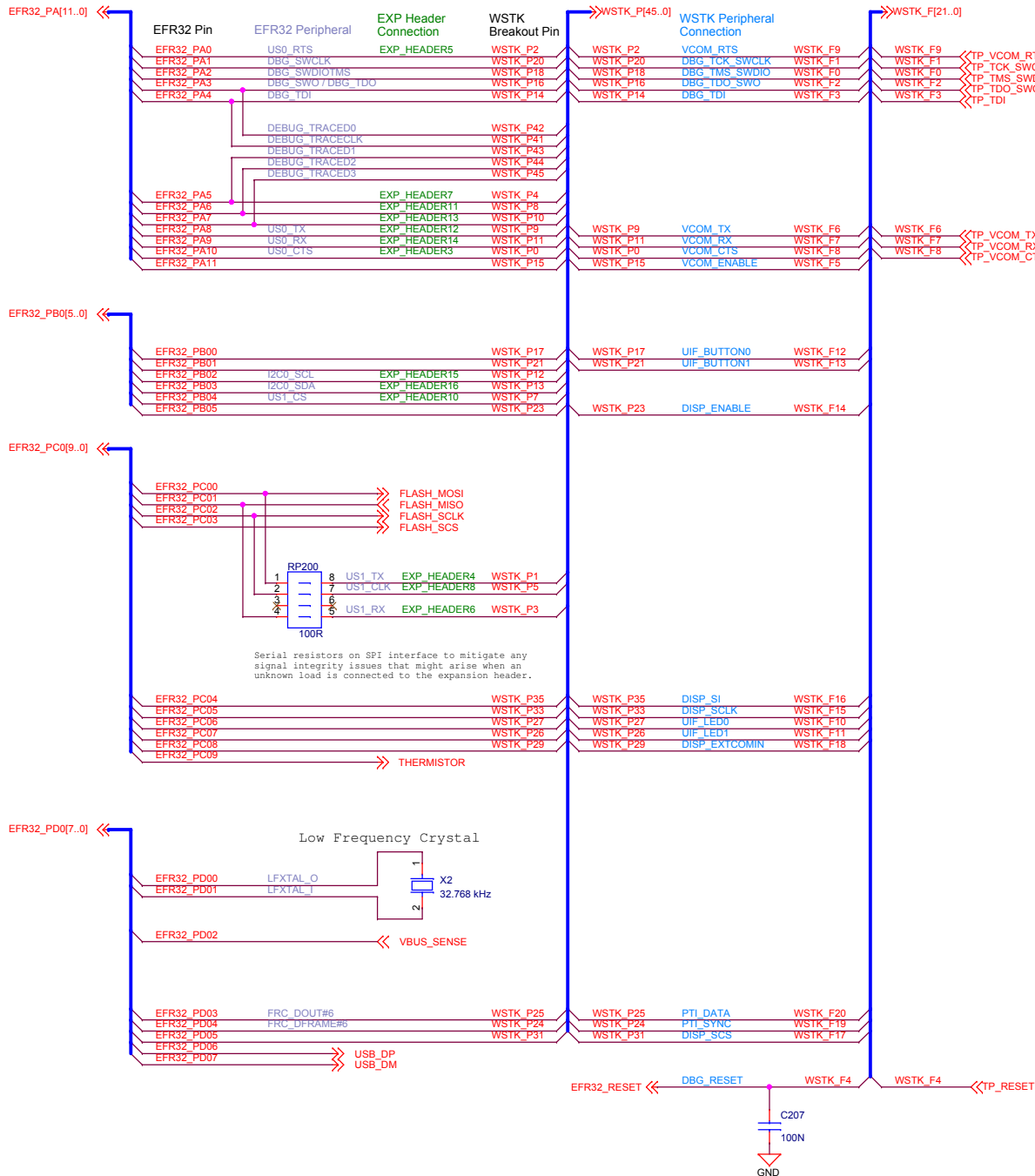
\* To supply from the on-board USB connector, set the power switch on the WSTK to USB state.

## WSTK Power Decoupling

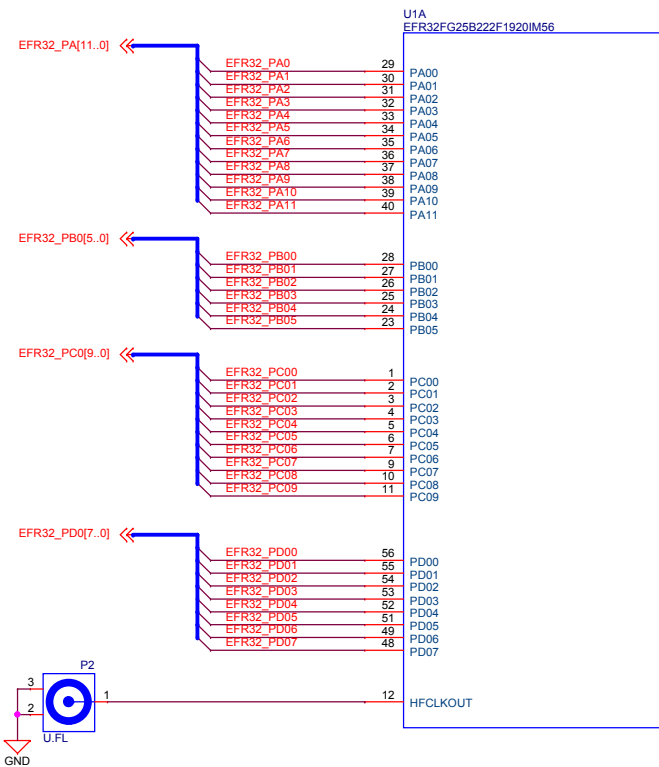


		Board Name	
		FG25 915 MHz 14 dBm Radio Board	
Designed TAB		Page Title	
Size A3		Board Power	
Sheet Modified Date		Board Number	
Wednesday, June 29, 2022		BRD4270B	
Approved RGU		Revision	
		A04	
COPYRIGHT SILICON LABORATORIES INC. 2020		CONFIDENTIAL – SUBJECT TO TERMS OF USE	
		Sheet 3 of 5	

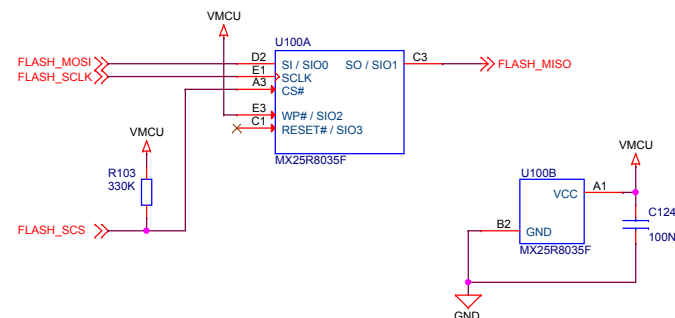
# Pin Mapping



# I/O Port Pins

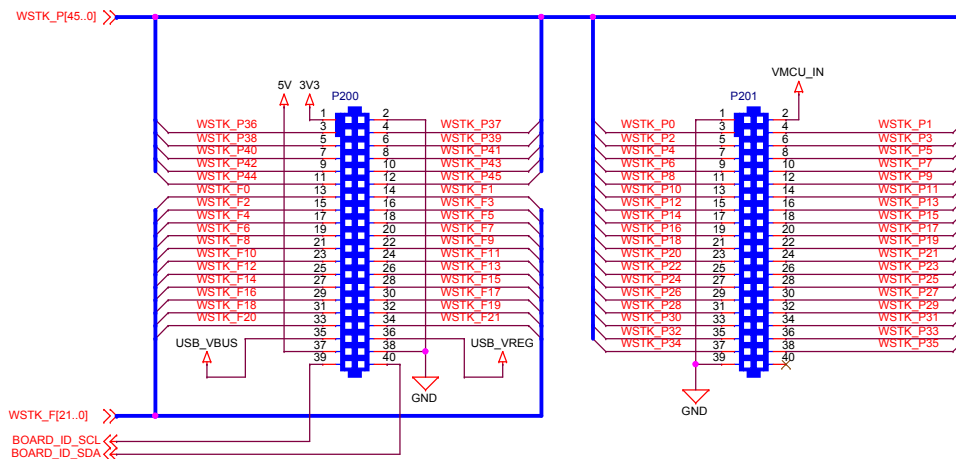


# Serial Flash

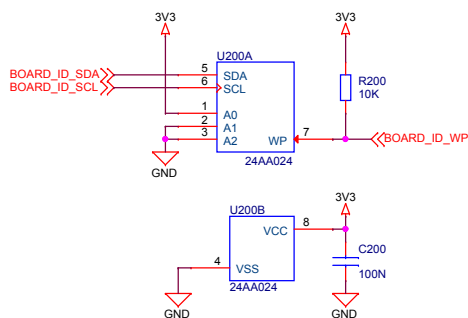


		Board Name	
		FG25 915 MHz 14 dBm Radio Board	
Designed TAB		Page Title	
Size A3		EFR32 Signal Assignments	
Sheet Modified Date Wednesday, June 29, 2022		Board Number BRD4270B	
Approved RGU		Revision A04	
COPYRIGHT SILICON LABORATORIES INC. 2020		CONFIDENTIAL - SUBJECT TO TERMS OF USE	
		Sheet 4 of 5	

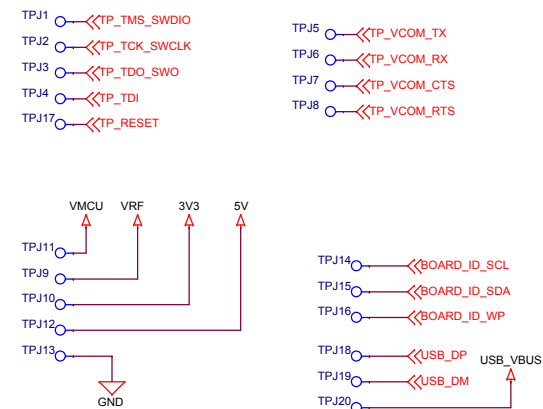
# WSTK Connectors




## Board Identification



## Test Points



		Board Name	
		FG25 915 MHz 14 dBm Radio Board	
Designed TAB		Page Title	
Size A3		WSTK Connectors & Board ID	
Sheet Modified Date		Board Number	
Wednesday, June 29, 2022		BRD4270B	
Revision		A04	
Copyright Silicon Laboratories Inc. 2020		CONFIDENTIAL – SUBJECT TO TERMS OF USE	
Sheet 5 of 5			