



EFR32FG25 Radio Board

915 MHz +16 dBm

Board Function

Page

Title Page

1

RF & Power

2

Board Power

3

EFR32 Signal Assignments

4

Mainboard Connectors, USB & Board ID

5



LEGAL NOTICE:
SILICON LABORATORIES INC. ("SILICON LABS") AND/OR ITS LICENSORS DO NOT WARRANT THE ACCURACY OR COMPLETENESS OF THIS SCHEMATIC OR ANY INFORMATION CONTAINED WITHIN THIS SCHEMATIC. IT IS PROVIDED "AS-IS" FOR REFERENCE ONLY. SILICON LABS DOES NOT WARRANT THAT THIS DESIGN WILL MEET THE SPECIFICATIONS, BE SUITABLE FOR YOUR APPLICATION OR FIT FOR ANY PARTICULAR PURPOSE, OR WILL OPERATE IN YOUR IMPLEMENTATION. SILICON LABS AND ITS LICENSORS DO NOT WARRANT THAT THE DESIGN IMPLIED IN THIS SCHEMATIC IS PRODUCTION-WORTHY. YOU SHOULD COMPLETELY VALIDATE AND TEST YOUR DESIGN IMPLEMENTATION TO CONFIRM SYSTEM FUNCTIONALITY FOR YOUR APPLICATION.

Revision History

Rev. Description

A00 Initial release.

A01 Updated X1 OPN. Fixed U8/U9 and P900 footprints.

A02 Upd. matching. Added R225.

A03 Release with U1 not mounted.

A04 Release with U1 mounted. Updated U1 OPN.

A05 Updated markings to 16dBm. Rearranged filter. Fixed P900 footprint.

A06 IOVDD2 <-- VLDO_3V3, USB_VBUS to U204, U205 removed. Removed R225.



Board Name

FG25 915 MHz 16 dBm Radio Board

Page Title

Title Page

Board Number

BRD4270B

Revision

A06

COPYRIGHT SILICON LABORATORIES INC. 2020 CONFIDENTIAL - SUBJECT TO TERMS OF USE

Sheet
1 of 5

Power & Decoupling

VDD Configuration

	Power Config 1 VMCU to VDD	Power Config 2 VLDO_3V6 to VDD
R210	Mount	Not mount
R211	Not mount	Mount

RF Shielding

Legend

- VMCU
- VLDO_3V6
- VDD
- Overlay pads of R210/R211

Board Name
FG25 915 MHz 16 dBm Radio Board

Page Title
RF & Power

Board Number
BRD4270B

Revision
A06

Copyright
COPYRIGHT SILICON LABORATORIES INC. 2020

Confidentiality
CONFIDENTIAL – SUBJECT TO TERMS OF USE

Sheet
2 of 5

VDD Configuration

	Power Config 1 VMCU to VDD	Power Config 2 VLDO_3V6 to VDD
R210	Mount	Not mount
R211	Not mount	Mount

VMCU

R210

OR

NM

VDD

VLDO_3V6

R211

OR

Overlay pads of R210/R211

RF Shielding

SH101

RF SHIELD COVER

NM

SH100

RF SHIELD FRAME

GND 1


NM

GND

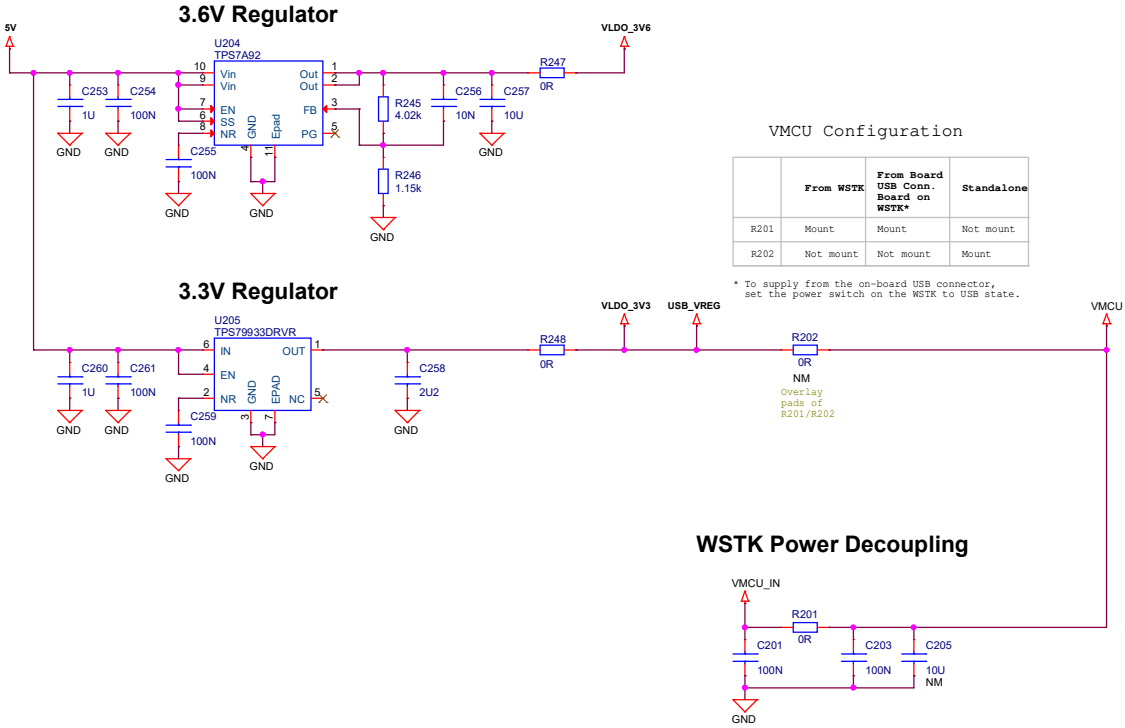
RF Shielding

The diagram illustrates the RF shielding setup for two components, SH101 and SH100. SH101 is labeled 'RF SHIELD COVER' and SH100 is labeled 'RF SHIELD FRAME'. Both components are connected to ground (GND) via a common point labeled '1'. The connection is shown as a red line from the 'GND' terminal of SH100 to a red triangle symbol labeled 'GND'.

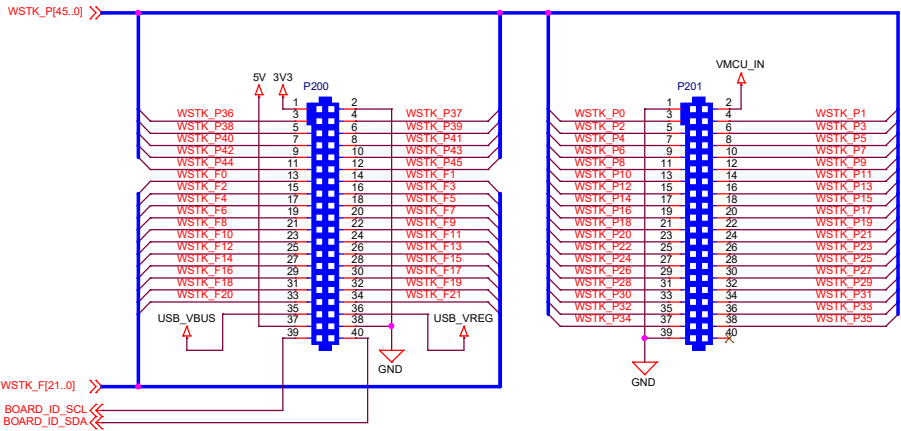
```
graph TD; SH101[SH101  
RF SHIELD  
COVER] --- NM1[NM]; SH100[SH100  
RF SHIELD  
FRAME] --- NM2[NM]; SH100 --- GND1[GND]; GND1 --- 1[1]; 1 --- GND2[GND];
```

 SILICON LABS		Board Name	
		FG25 915 MHz 16 dBm Radio Board	
Designed TAB		Approved RGU	
Size A3		Revision A06	
Sheet Modified Date Tuesday, January 10, 2023		Board Number BRD4270B	
COPYRIGHT SILICON LABORATORIES INC. 2020		CONFIDENTIAL - SUBJECT TO TERMS OF USE	
		Sheet 2 of 5	

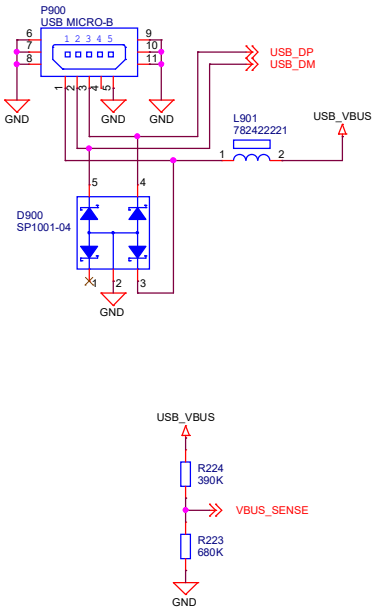
Board Power



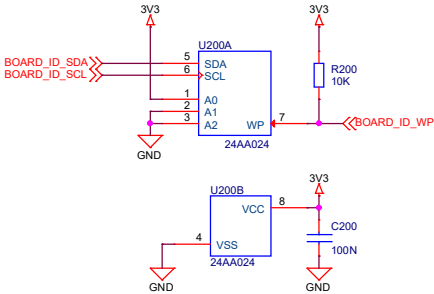
Mainboard Connectors



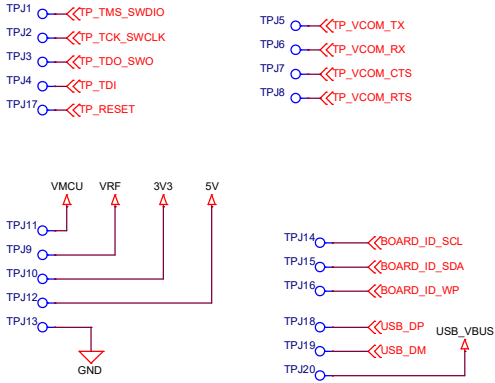
USB Connector & VBUS Sense




Board Identification



Test Points



 SILICON LABS	Board Name FG25 915 MHz 16 dBm Radio Board	
	Page Title Mainboard Connectors, USB & Board ID	
Designed TAB	Approved RGU	Revision A06
Size A3	Sheet Modified Date Tuesday, January 10, 2023	Board Number BRD4270B
COPYRIGHT SILICON LABORATORIES INC. 2020 CONFIDENTIAL – SUBJECT TO TERMS OF USE		
		Sheet 5 of 5