



EFR32FG25 Radio Board

868 MHz +14 dBm

Board Function

Page

Title Page

1

RF & Power

2

Board Power

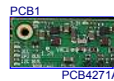
3

EFR32 Signal Assignments

4

WSTK Connectors & Board ID

5



LEGAL NOTICE:
SILICON LABORATORIES INC. ("SILICON LABS") AND/OR ITS LICENSORS DO NOT WARRANT THE ACCURACY OR COMPLETENESS OF THIS SCHEMATIC OR ANY INFORMATION CONTAINED WITHIN THIS SCHEMATIC. IT IS PROVIDED "AS-IS" FOR REFERENCE ONLY. SILICON LABS DOES NOT WARRANT THAT THIS DESIGN WILL MEET THE SPECIFICATIONS, BE SUITABLE FOR YOUR APPLICATION OR FIT FOR ANY PARTICULAR PURPOSE, OR WILL OPERATE IN YOUR IMPLEMENTATION. SILICON LABS AND ITS LICENSORS DO NOT WARRANT THAT THE DESIGN IMPLIED IN THIS SCHEMATIC IS PRODUCTION-WORTHY. YOU SHOULD COMPLETELY VALIDATE AND TEST YOUR DESIGN IMPLEMENTATION TO CONFIRM SYSTEM FUNCTIONALITY FOR YOUR APPLICATION.

Revision History


Rev. Description

A00 Initial release.

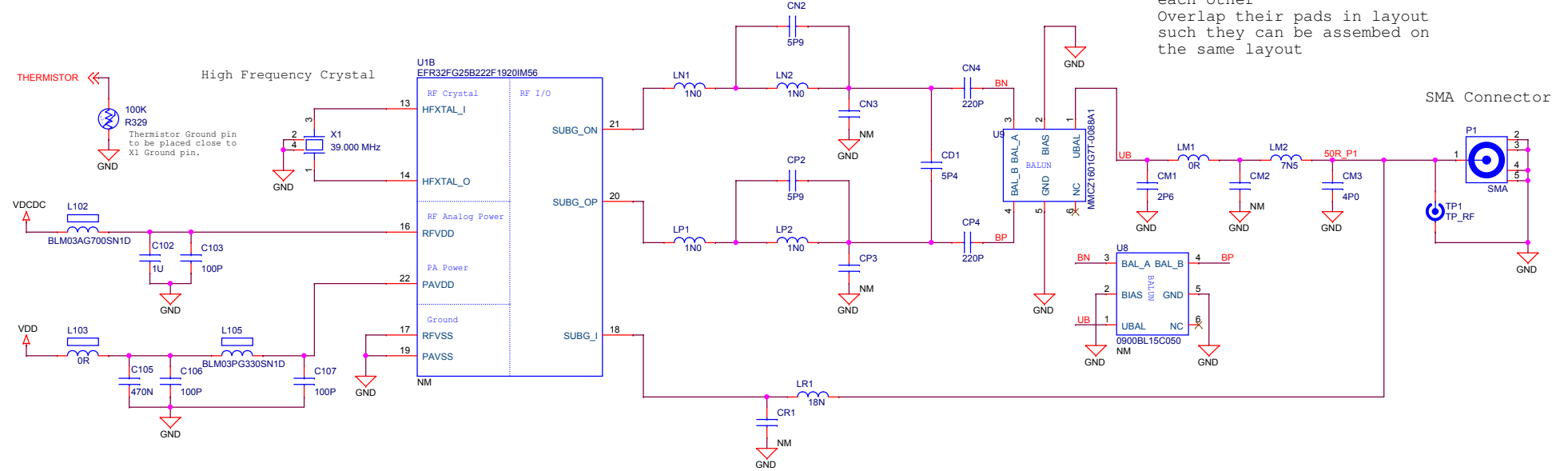
A01 Upd. match. nw., X1, C112, C256. Fixed P900 footprint. Thermistor, VBUS_Sense added.

A02 Upd. matching. Added R225.

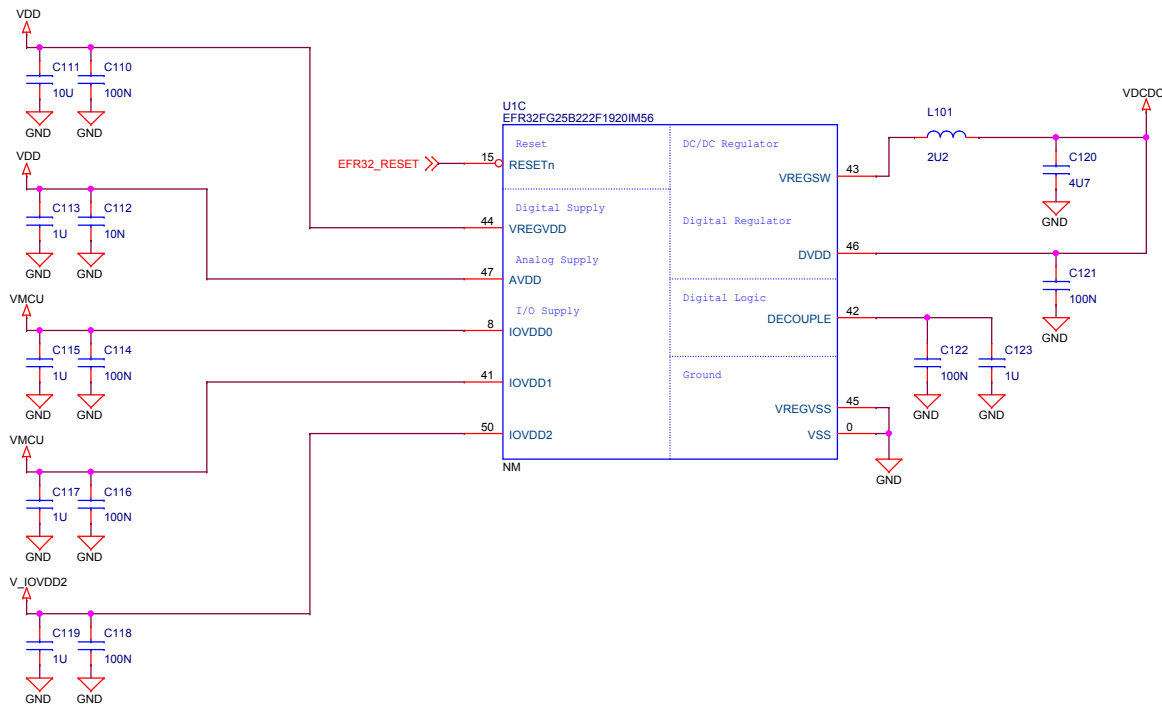
A03 Release with U1 not mounted.

 SILICON LABS		Board Name FG25 868 MHz 14 dBm Radio Board	
		Page Title Title Page	
Designed TAB	Approved RGU	Board Number BRD4271A	Revision A03
Size A3	Sheet Modified Date Tuesday, June 07, 2022		Sheet 1 of 5
COPYRIGHT SILICON LABORATORIES INC. 2020		CONFIDENTIAL – SUBJECT TO TERMS OF USE	

Radio Interface

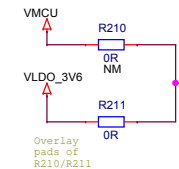


Power & Decoupling

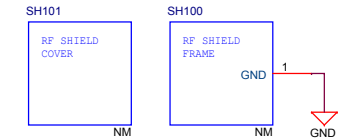


VDD Configuration

	Power Config 1 VMCU to VDD	Power Config 2 VLDO_3V6 to VDD
R210	Mount	Not mount
R211	Not mount	Mount

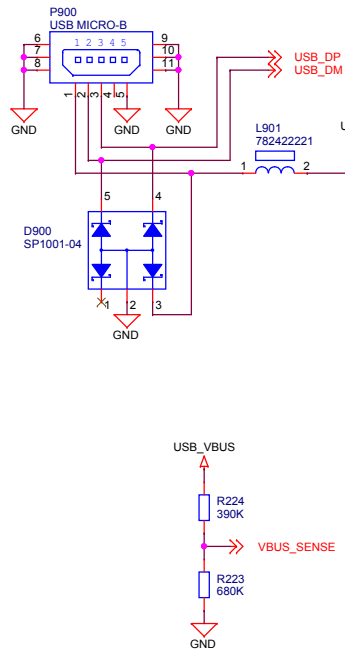


RF Shielding

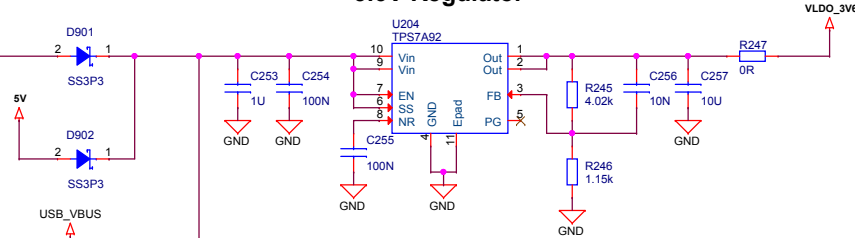


		Board Name	
		FG25 868 MHz 14 dBm Radio Board	
Designed TAB		Page Title	
Size A3		RF & Power	
Sheet Modified Date		Board Number	
Tuesday, June 07, 2022		BRD4271A	
Copyright Silicon Laboratories Inc. 2020		Revision	
CONFIDENTIAL - SUBJECT TO TERMS OF USE		A03	
		Sheet 2 of 5	

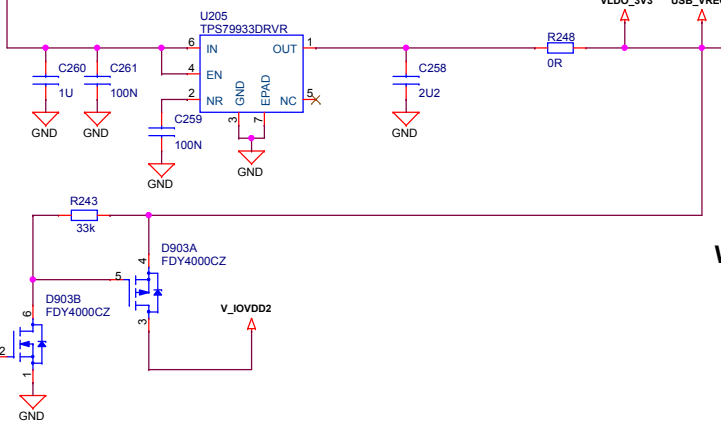
Debug USB Connection



3.6V Regulator



3.3V Regulator

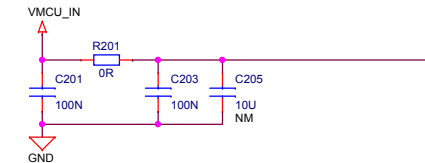



VMCU Configuration

	From WSTK	From Board USB Conn. Board on WSTK*	Standalone
R201	Mount	Mount	Not mount
R202	Not mount	Not mount	Mount

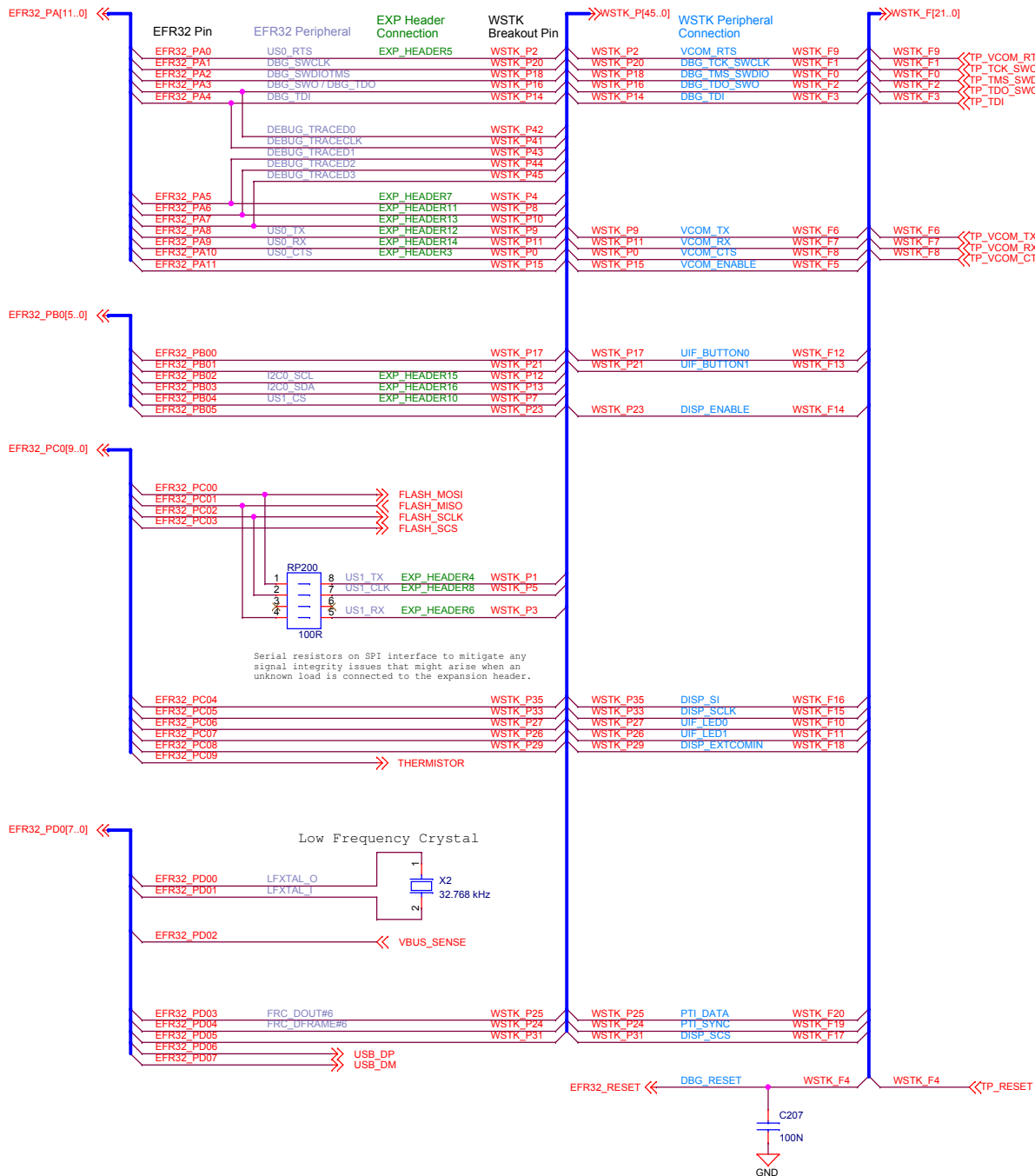
* To supply from the on-board USB connector, set the power switch on the WSTK to USB state.

WSTK Power Decoupling

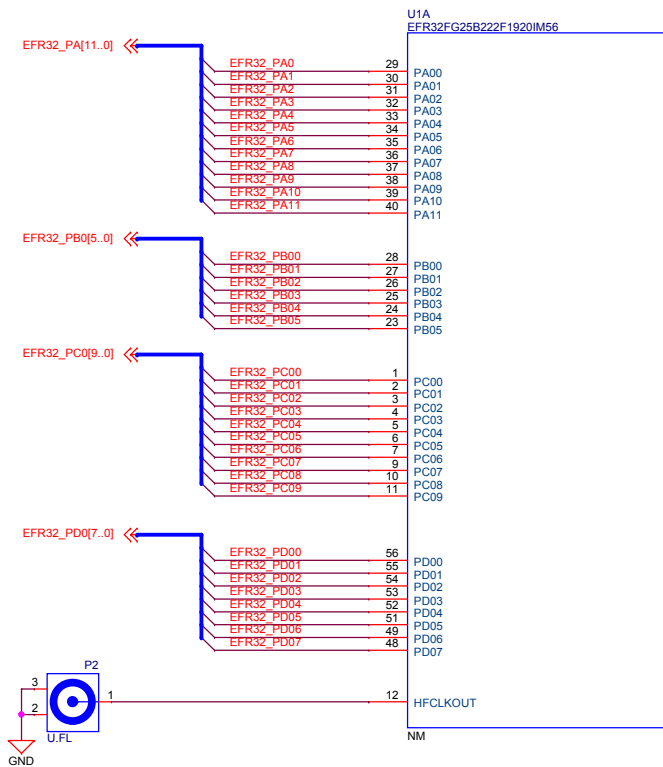


		Board Name	
		FG25 868 MHz 14 dBm Radio Board	
Designed TAB		Page Title	
Approved RGU		Board Power	
Size A3	Sheet Modified Date Tuesday, June 07, 2022	Board Number	Revision
		BRD4271A	A03
COPYRIGHT SILICON LABORATORIES INC. 2020 CONFIDENTIAL – SUBJECT TO TERMS OF USE			Sheet 3 of 5

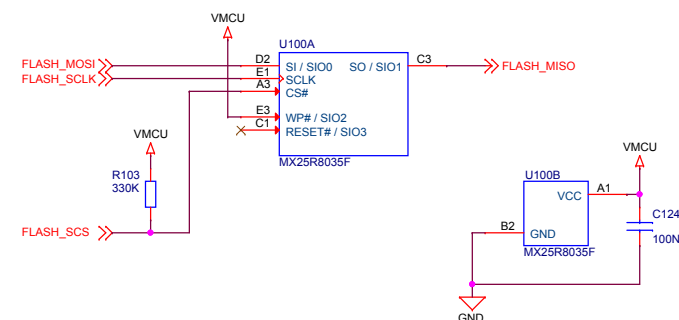
Pin Mapping



I/O Port Pins

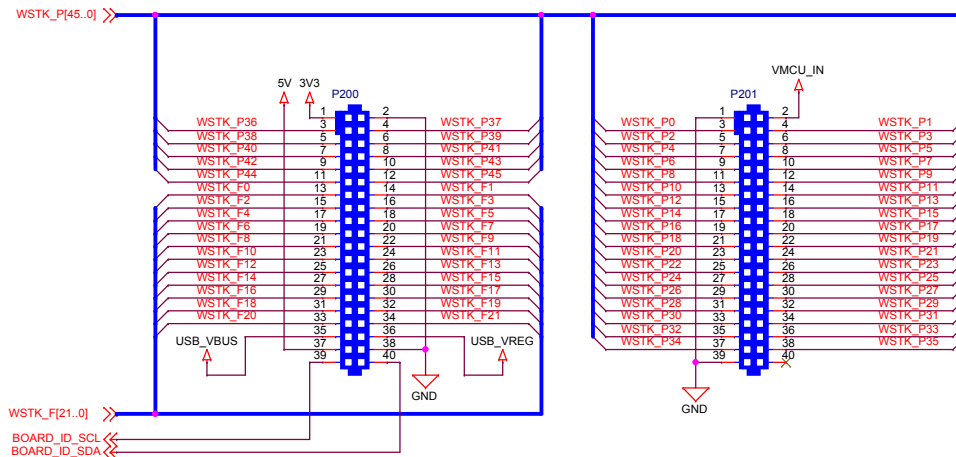


Serial Flash

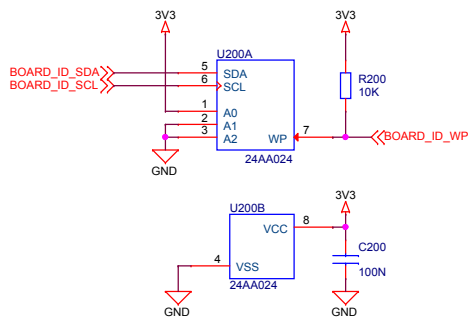


		Board Name	
		FG25 868 MHz 14 dBm Radio Board	
Designed TAB		Page Title	
Approved RGU		EFR32 Signal Assignments	
Size A3		Board Number	
Sheet Modified Date		BRD4271A	
Tuesday, June 07, 2022		Revision	
		A03	
COPYRIGHT SILICON LABORATORIES INC. 2020		CONFIDENTIAL – SUBJECT TO TERMS OF USE	
		Sheet 4 of 5	

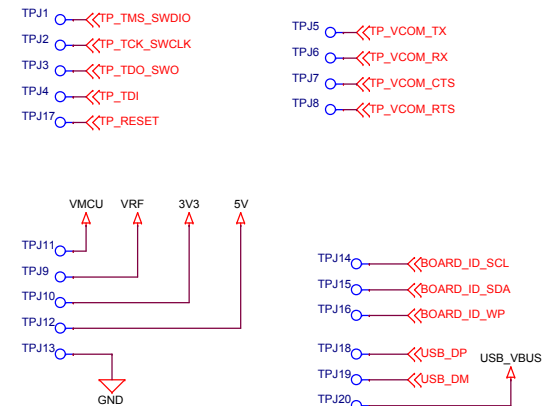
WSTK Connectors




Board Identification



Test Points



		Board Name	
		FG25 868 MHz 14 dBm Radio Board	
Designed TAB		Page Title	
Size A3		WSTK Connectors & Board ID	
Sheet Modified Date Tuesday, June 07, 2022		Board Number	Revision
		BRD4271A	A03
COPYRIGHT SILICON LABORATORIES INC. 2020 CONFIDENTIAL – SUBJECT TO TERMS OF USE			Sheet 5 of 5