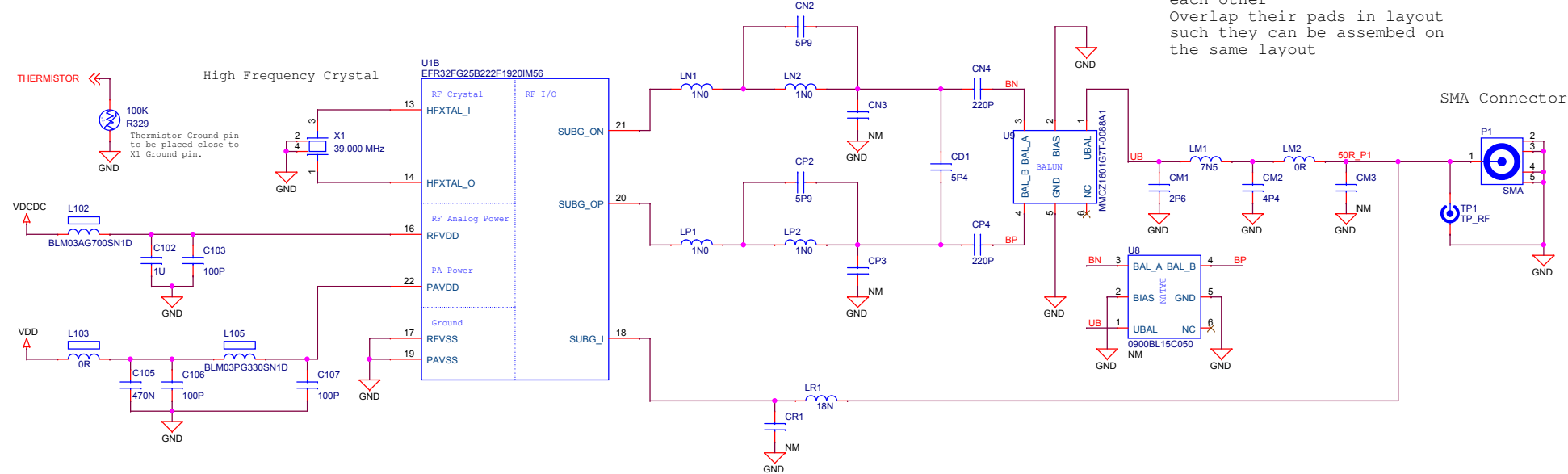
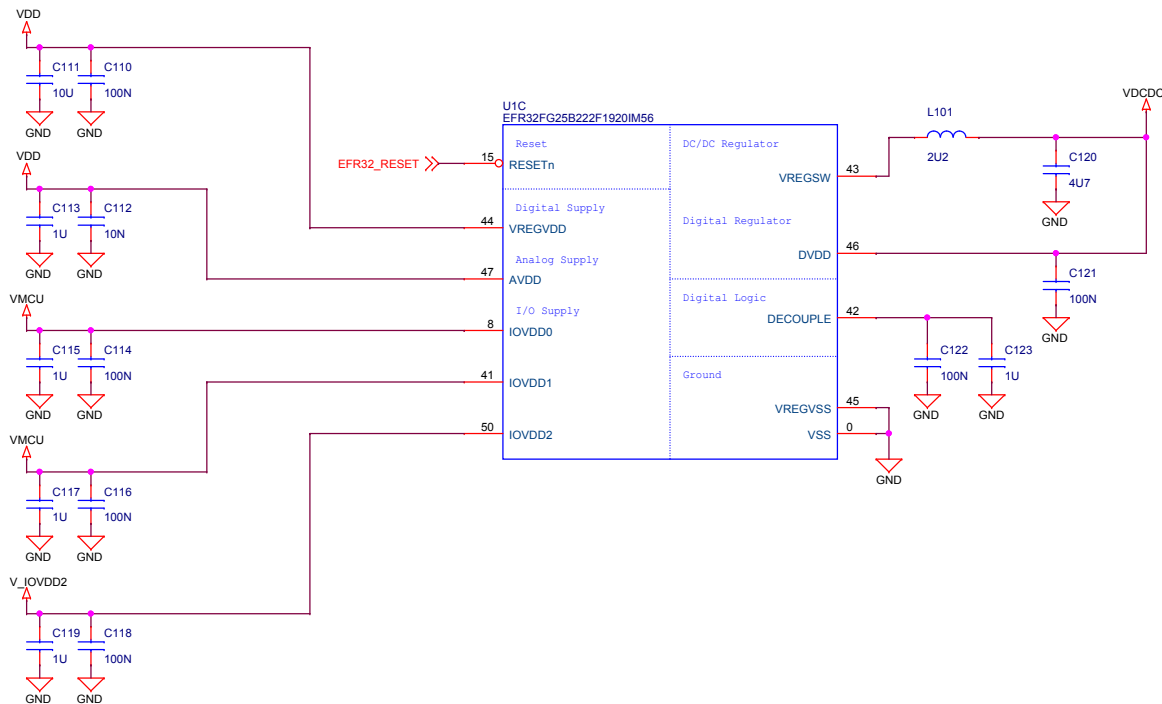


Radio Interface

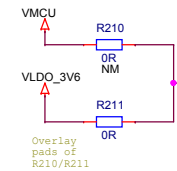


Power & Decoupling

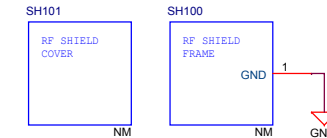


VDD Configuration

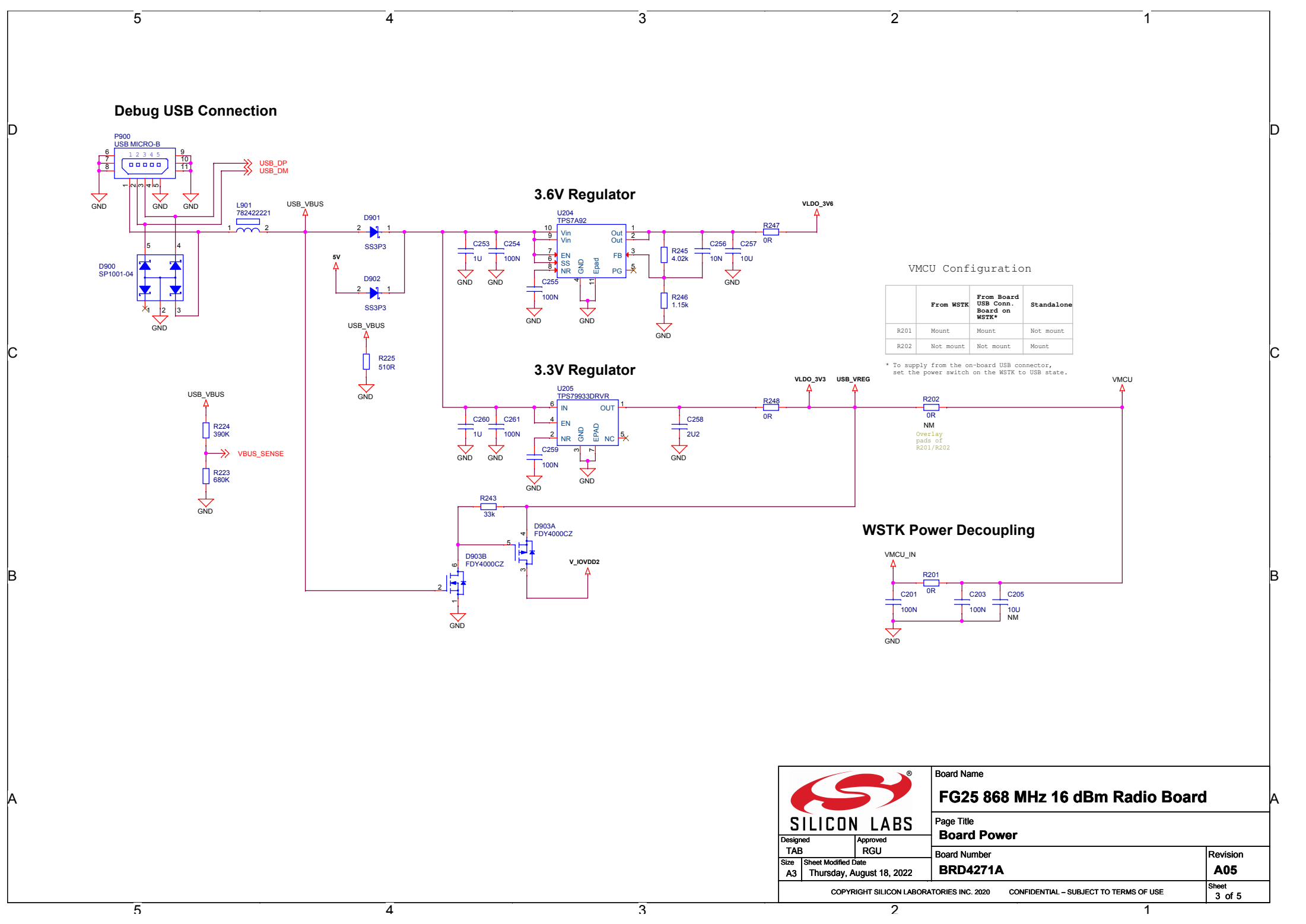
	Power Config 1 VMCU to VDD	Power Config 2 VLDO_3V6 to VDD
R210	Mount	Not mount
R211	Not mount	Mount



RF Shielding



		Board Name	
		FG25 868 MHz 16 dBm Radio Board	
Designed TAB		Page Title	
Size A3		RF & Power	
Sheet Modified Date		Board Number	
Thursday, August 18, 2022		BRD4271A	
COPYRIGHT SILICON LABORATORIES INC. 2020		CONFIDENTIAL - SUBJECT TO TERMS OF USE	
		Revision	
		A05	
		Sheet 2 of 5	



Debug USB Connection

3.6V Regulator


3.3V Regulator

VMCU Configuration

	From WSTK	From Board USB Conn. Board on WSTK*	Standalone
R201	Mount	Mount	Not mount
R202	Not mount	Not mount	Mount

* To supply from the on-board USB connector, set the power switch on the WSTK to USB state.

WSTK Power Decoupling



SILICON LABS

Board Name
FG25 868 MHz 16 dBm Radio Board

Page Title
Board Power

Board Number
BRD4271A

Revision
A05

Designed
TAB

Approved
RGU

Size
A3

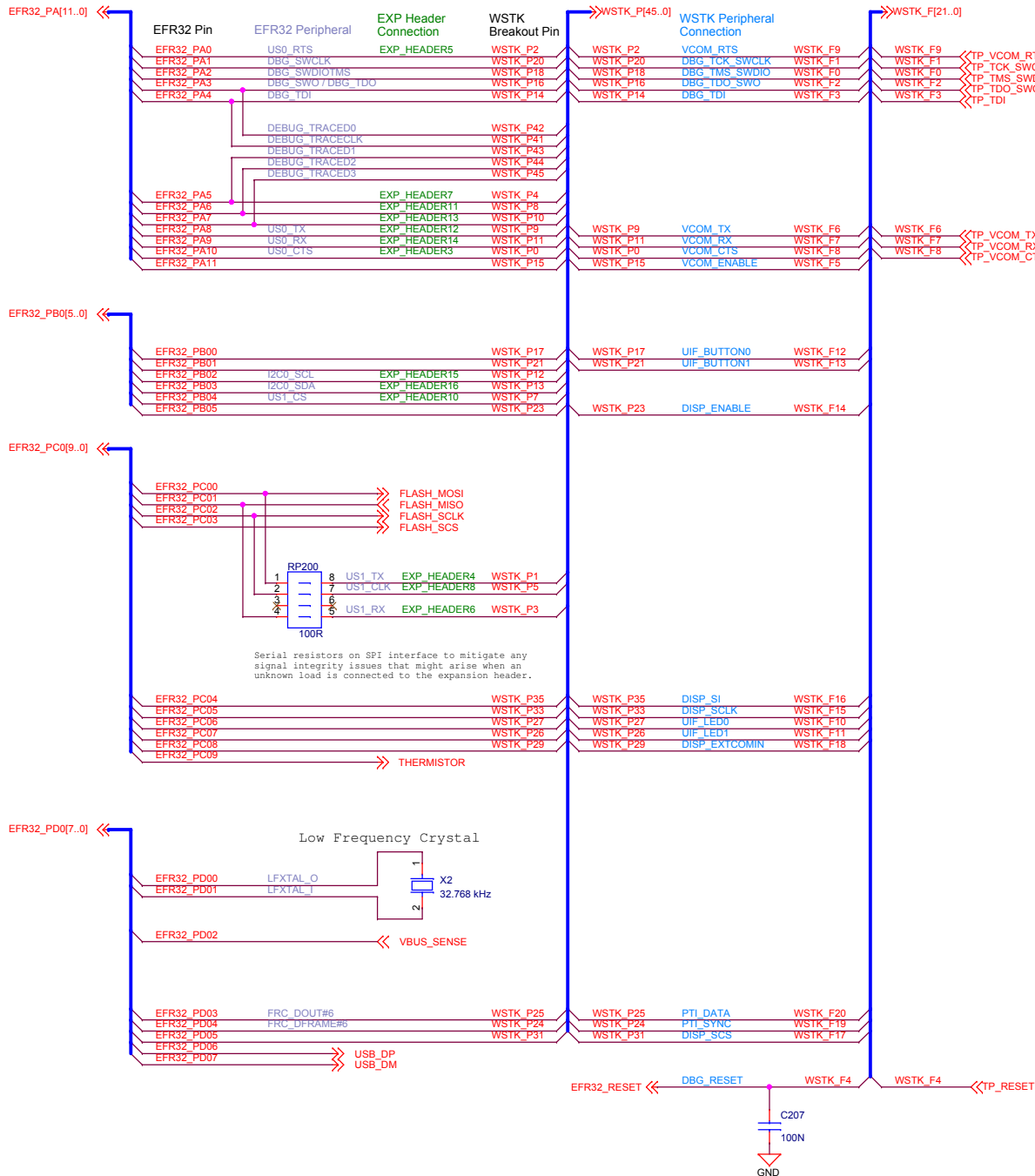
Sheet Modified Date
Thursday, August 18, 2022

COPYRIGHT SILICON LABORATORIES INC. 2020

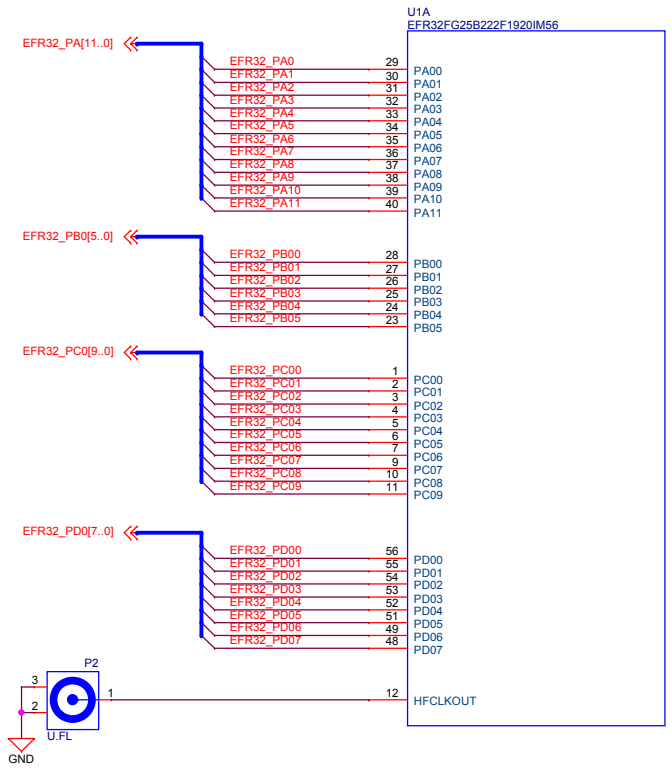
CONFIDENTIAL – SUBJECT TO TERMS OF USE

Sheet
3 of 5

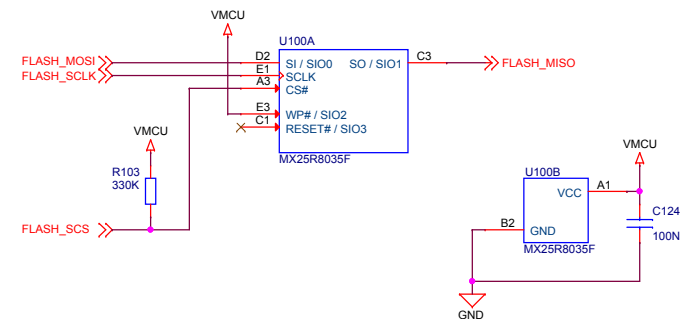
Pin Mapping



I/O Port Pins

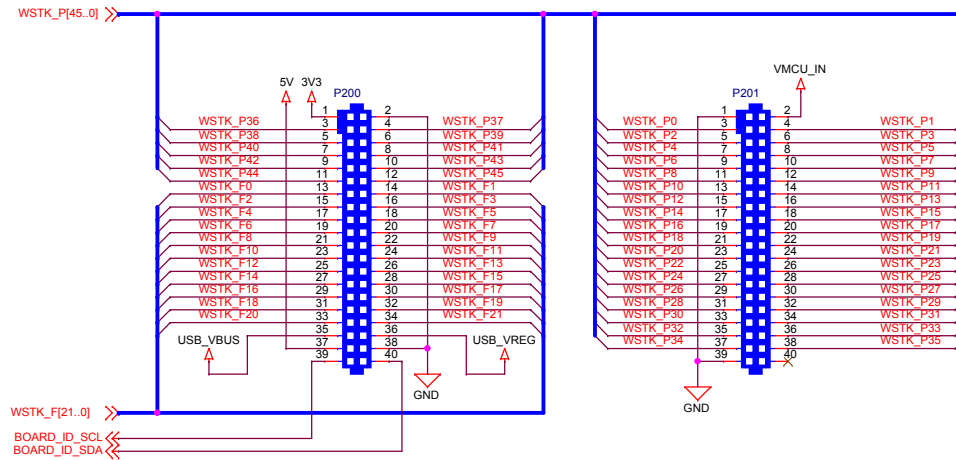


Serial Flash

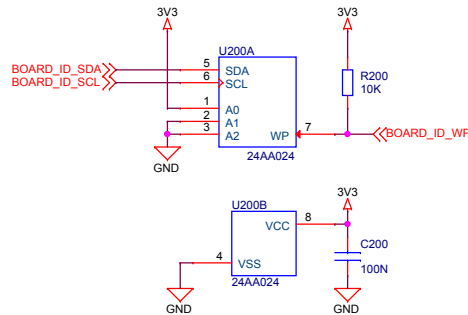


		Board Name	
		FG25 868 MHz 16 dBm Radio Board	
Designed TAB		Page Title	
Approved RGU		EFR32 Signal Assignments	
Size A3		Board Number	
Sheet Modified Date		BRD4271A	
Thursday, August 18, 2022		Revision	
		A05	
COPYRIGHT SILICON LABORATORIES INC. 2020		CONFIDENTIAL – SUBJECT TO TERMS OF USE	
		Sheet 4 of 5	

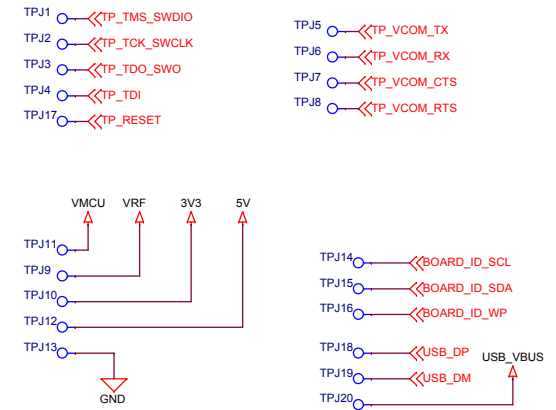
WSTK Connectors




Board Identification



Test Points



		Board Name	
		FG25 868 MHz 16 dBm Radio Board	
Designed TAB		Page Title	
Size A3		WSTK Connectors & Board ID	
Sheet Modified Date Thursday, August 18, 2022		Board Number	Revision
		BRD4271A	A05
COPYRIGHT SILICON LABORATORIES INC. 2020 CONFIDENTIAL – SUBJECT TO TERMS OF USE			Sheet 5 of 5