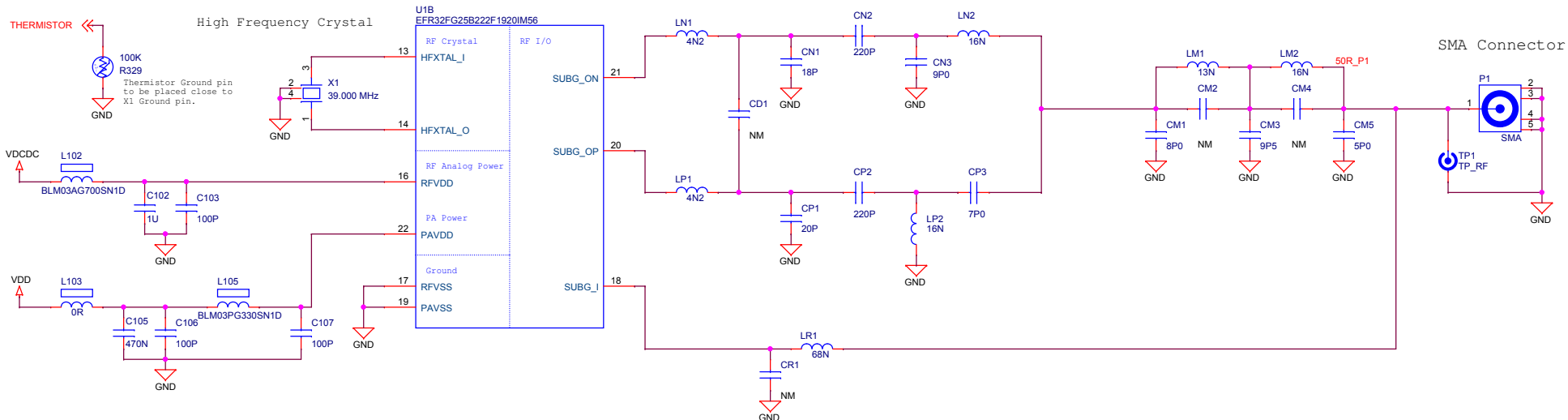


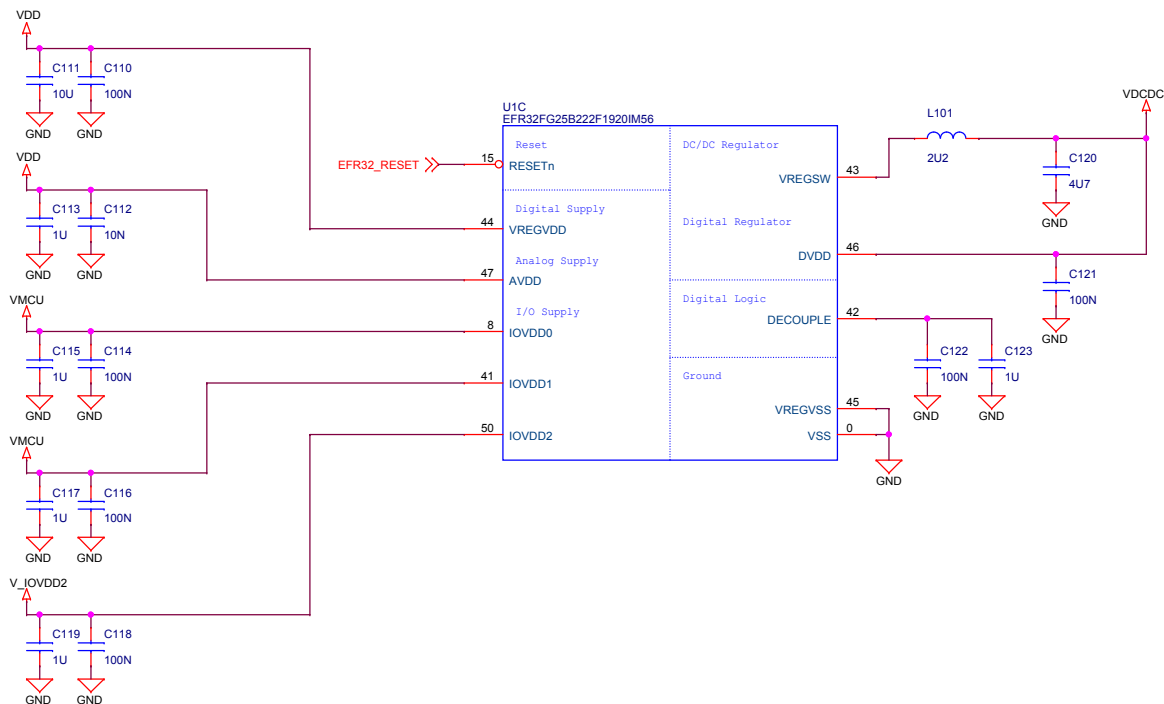


## Radio Interface

## Sub-GHz matching network

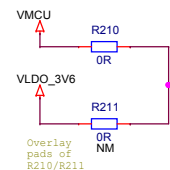


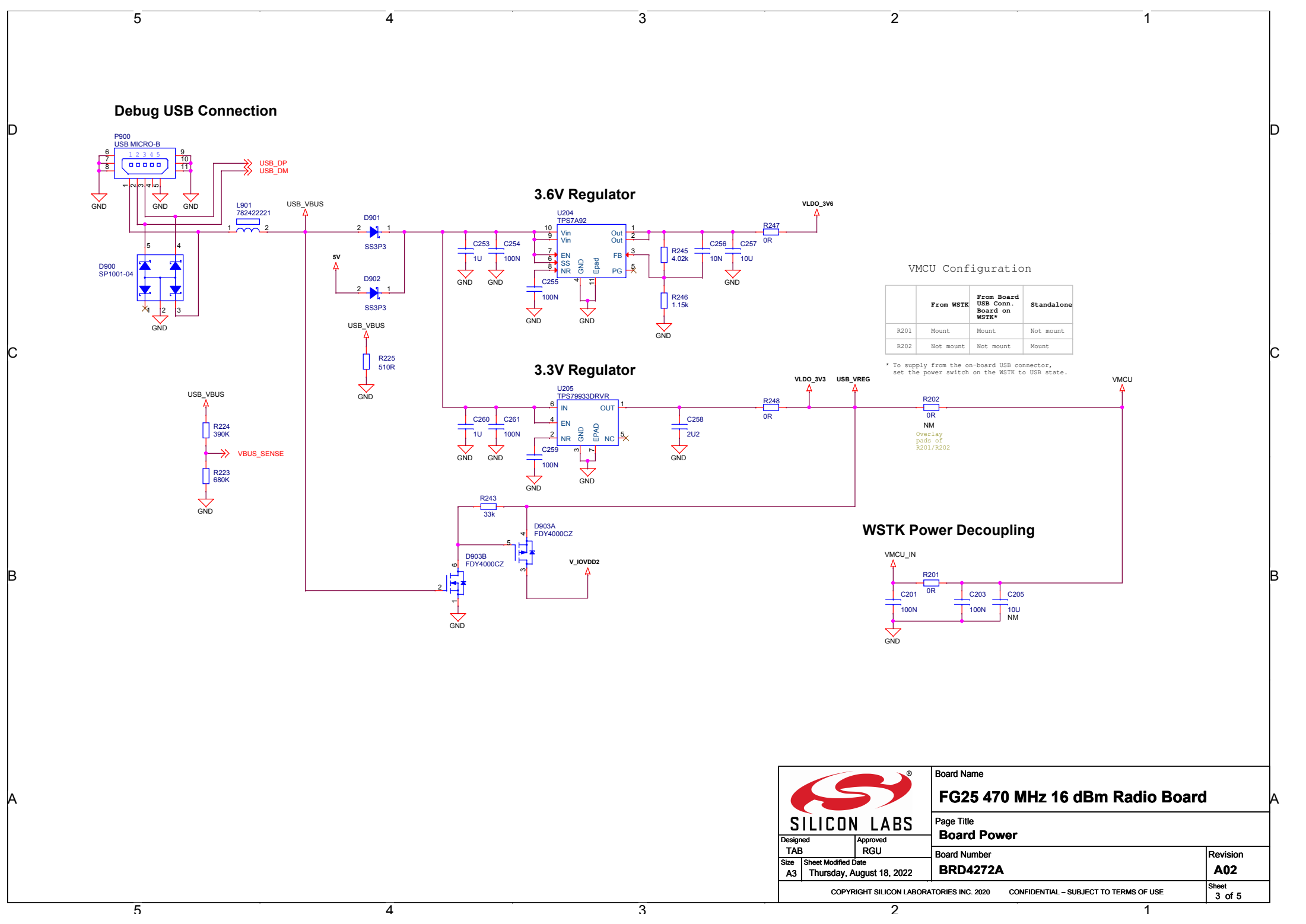
## Power & Decoupling



## VDD Configuration

	Power Config 1 VMCU to VDD	Power Config 2 VLDO_3V6 to VDD
R210	Mount	Not mount
R211	Not mount	Mount





Debug USB Connection

3.6V Regulator


3.3V Regulator

VMCU Configuration

	From WSTK	From Board USB Conn. Board on WSTK*	Standalone
R201	Mount	Mount	Not mount
R202	Not mount	Not mount	Mount

\* To supply from the on-board USB connector, set the power switch on the WSTK to USB state.

WSTK Power Decoupling



**SILICON LABS**

Board Name  
**FG25 470 MHz 16 dBm Radio Board**

Page Title  
**Board Power**

Board Number  
**BRD4272A**

Revision  
**A02**

Designed  
TAB

Approved  
RGU

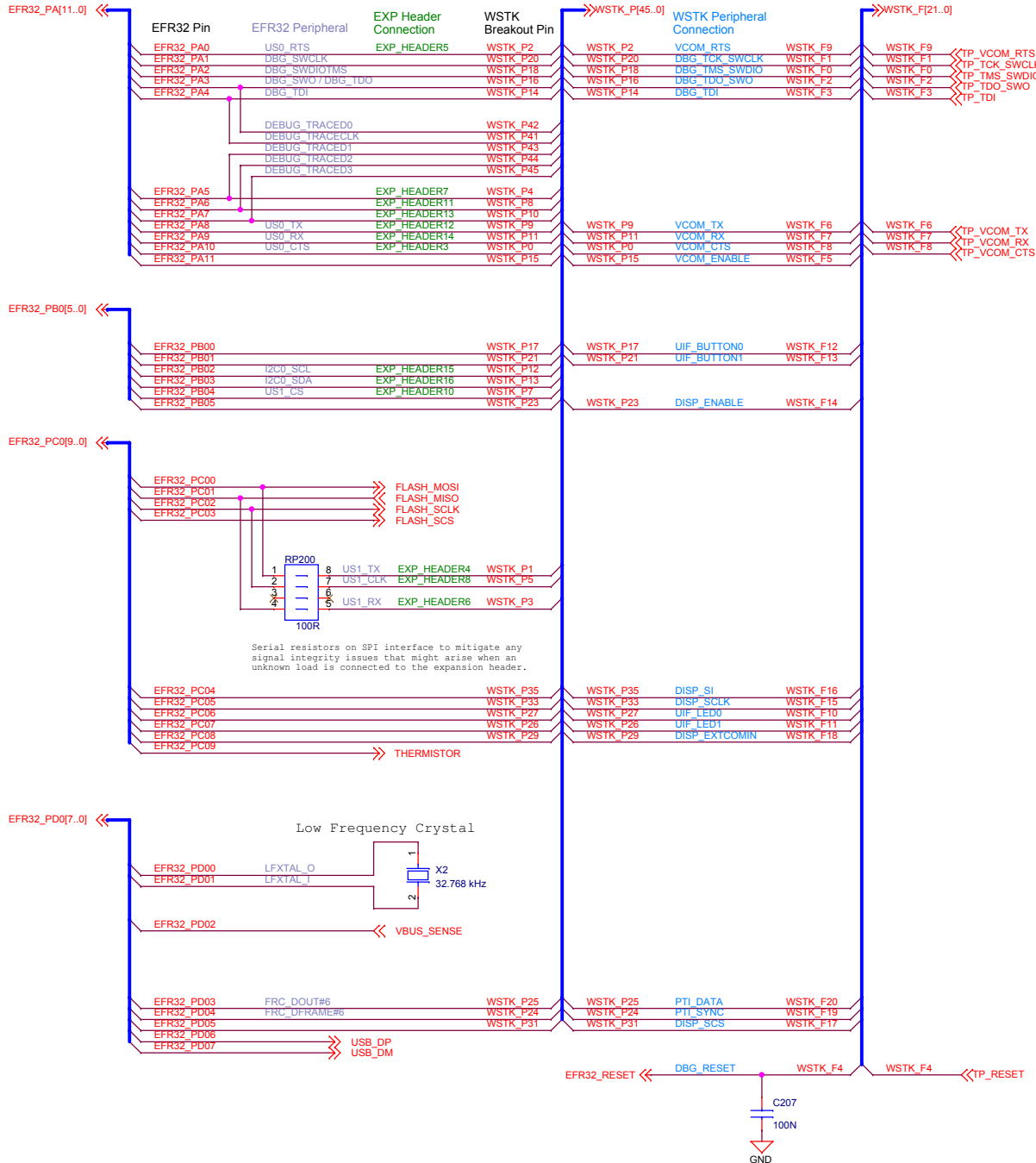
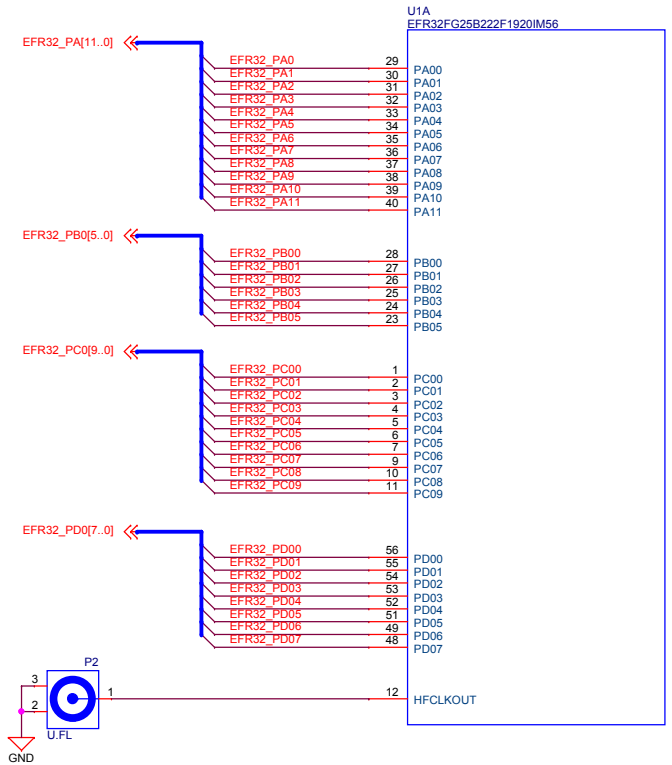
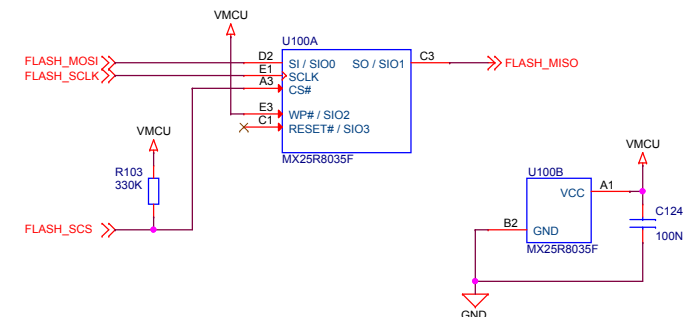
Size  
A3


Sheet Modified Date  
Thursday, August 18, 2022

COPYRIGHT SILICON LABORATORIES INC. 2020

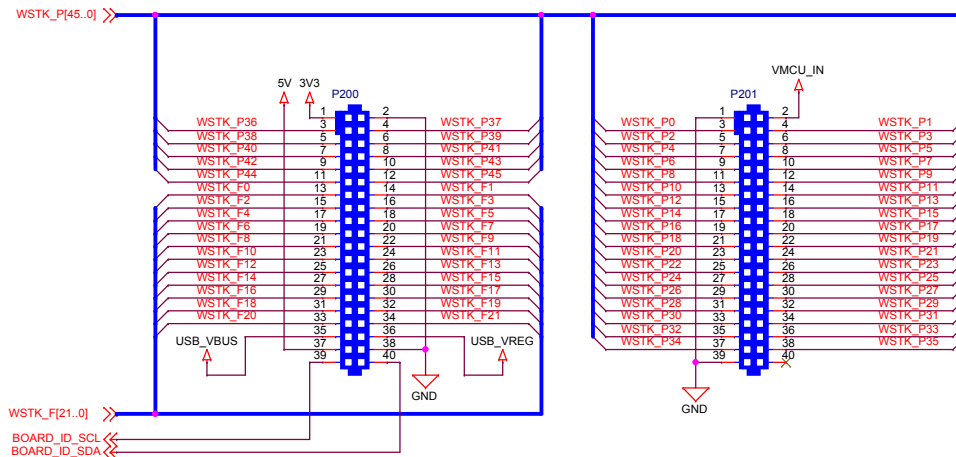
CONFIDENTIAL – SUBJECT TO TERMS OF USE

Sheet  
3 of 5

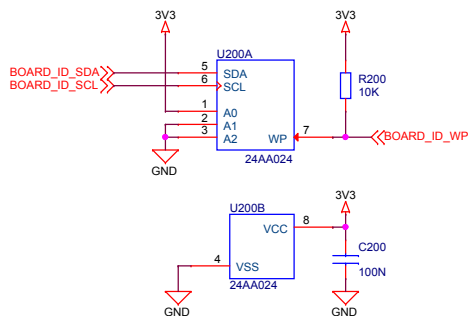
[illegible][illegible][illegible]

 <b>SILICON LABS</b>		Board Name	
		<b>FG25 470 MHz 16 dBm Radio Board</b>	
Designed TAB		Approved RGU	
Page Title		<b>EFR32 Signal Assignments</b>	
Size A3	Sheet Modified Date Thursday, August 18, 2022	Board Number <b>BRD4272A</b>	Revision <b>A02</b>
COPYRIGHT SILICON LABORATORIES INC. 2020		CONFIDENTIAL – SUBJECT TO TERMS OF USE	
		Sheet 4 of 5	

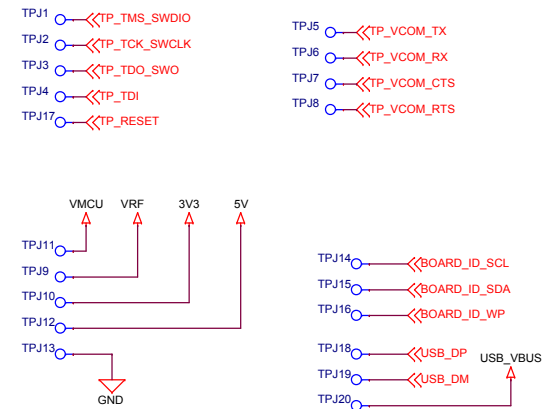
# WSTK Connectors




## Board Identification



## Test Points



		Board Name	
		FG25 470 MHz 16 dBm Radio Board	
Designed TAB		Page Title	
Size A3		WSTK Connectors & Board ID	
Sheet Modified Date Thursday, August 18, 2022		Board Number	Revision
		BRD4272A	A02
COPYRIGHT SILICON LABORATORIES INC. 2020    CONFIDENTIAL – SUBJECT TO TERMS OF USE			Sheet 5 of 5