




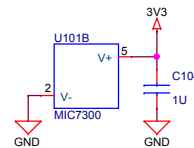
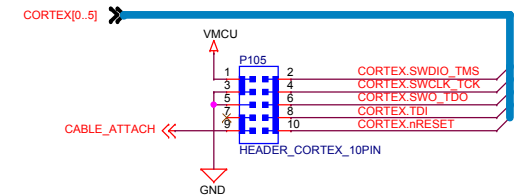
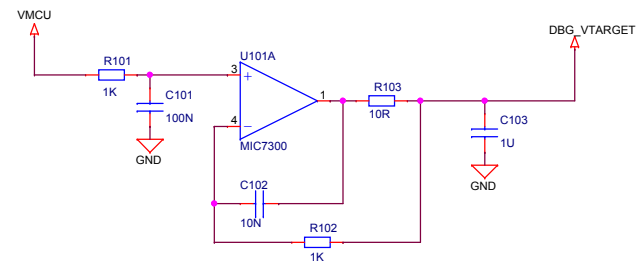
Debug Adapter Board with Simplicity Mini+ Connector	
Board Function	Page
Title Page	1
First Schematic Page	2



LEGAL NOTICE:
SILICON LABORATORIES INC. ("SILICON LABS") AND/OR ITS LICENSORS DO NOT WARRANT THE ACCURACY OR COMPLETENESS OF THIS SCHEMATIC OR ANY INFORMATION CONTAINED WITHIN THIS SCHEMATIC. IT IS PROVIDED "AS-IS" FOR REFERENCE ONLY. SILICON LABS DOES NOT WARRANT THAT THIS DESIGN WILL MEET THE SPECIFICATIONS, BE SUITABLE FOR YOUR APPLICATION OR FIT FOR ANY PARTICULAR PURPOSE, OR WILL OPERATE IN YOUR IMPLEMENTATION. SILICON LABS AND ITS LICENSORS DO NOT WARRANT THAT THE DESIGN IMPLIED IN THIS SCHEMATIC IS PRODUCTION-WORTHY. YOU SHOULD COMPLETELY VALIDATE AND TEST YOUR DESIGN IMPLEMENTATION TO CONFIRM SYSTEM FUNCTIONALITY FOR YOUR APPLICATION.

Revision History	
Rev.	Description
A00	Initial production release.
A01	Fixed P101 and P102 placement, and RP101 to mounted
A02	Updated PCB revision. Removed all components.

 SILICON LABS	Board Name Debug Adapter Board with Simplicity Mini+ Connector	
	Page Title Title Page	
Designed NNN	Approved RGU	Revision A02
Size A3	Sheet Modified Date Monday, March 07, 2022	Board Number BRD8010B
COPYRIGHT SILICON LABORATORIES INC. 2020		CONFIDENTIAL – SUBJECT TO TERMS OF USE
		Sheet 1 of 2



Designed ADS		Approved RGU	First Schematic Page	
Size A3	Sheet Modified Date Monday, March 07, 2022		Board Number BRD8010B	Revision A02
COPYRIGHT SILICON LABORATORIES INC. 2020			CONFIDENTIAL – SUBJECT TO TERMS OF USE	Sheet 2 of 2