
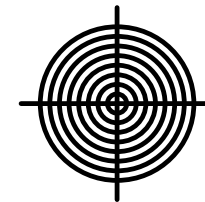
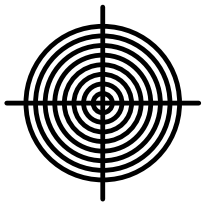


J1

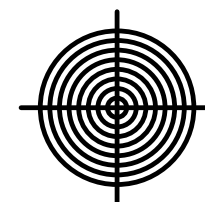
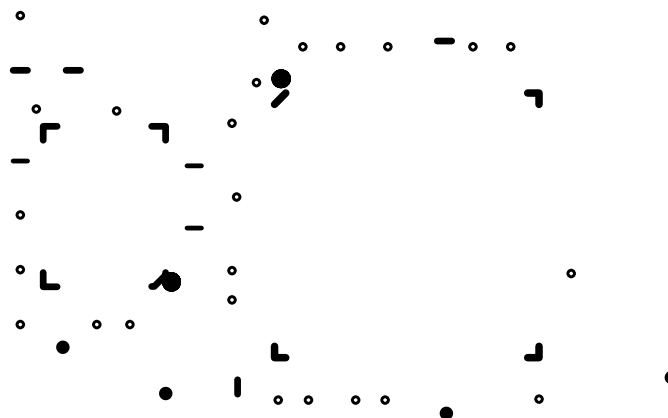
J2

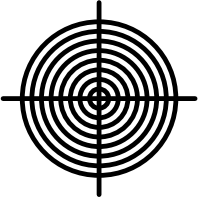
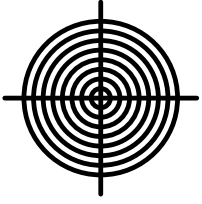


SILICON LABS
SiLabs® IST-A35 REV 1.1

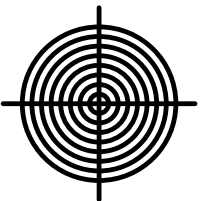
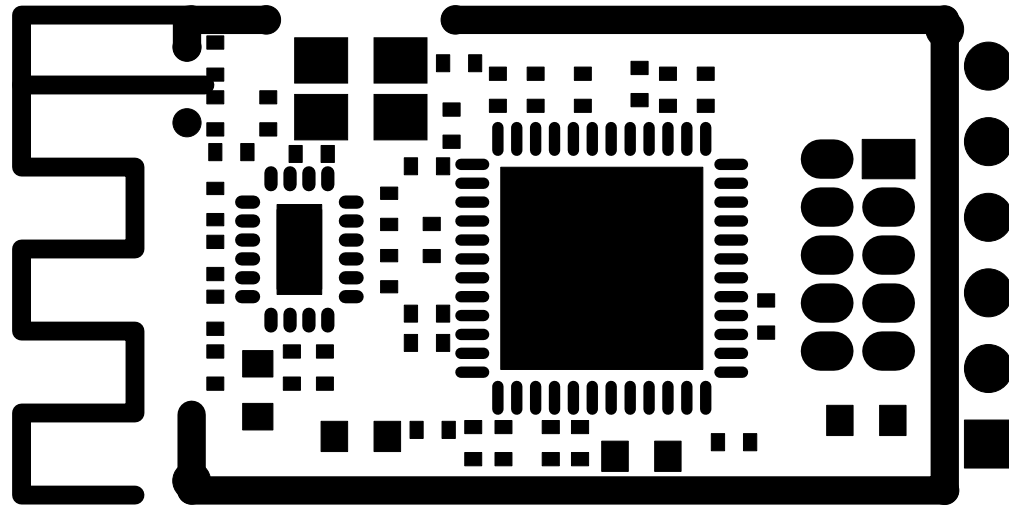


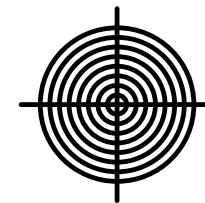
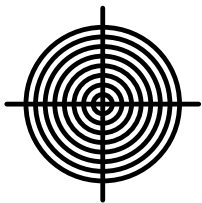
PRIMARY SILKSCREEN



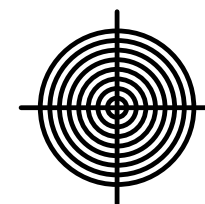
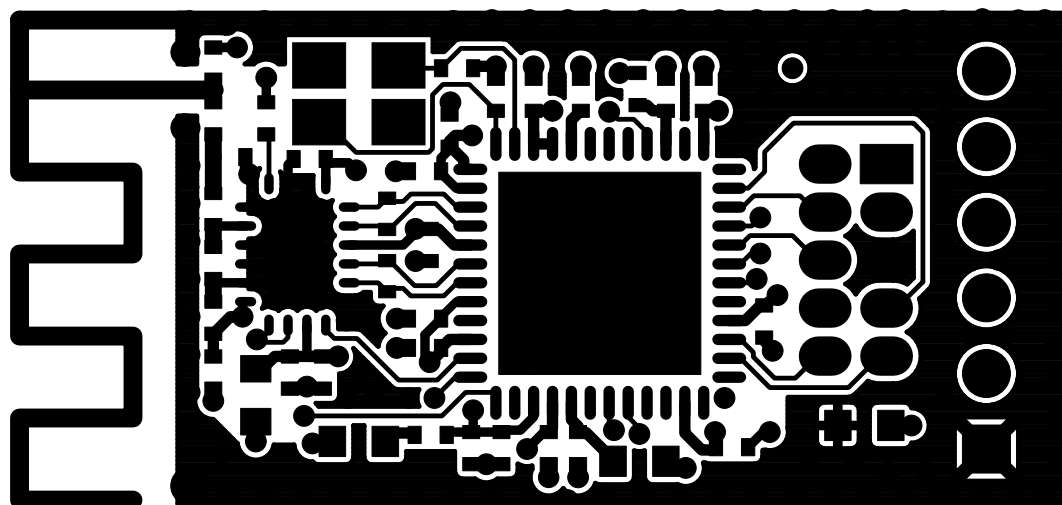


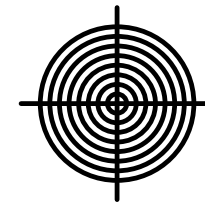
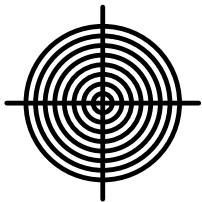
PRIMARY SOLDER MASK



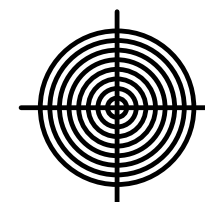
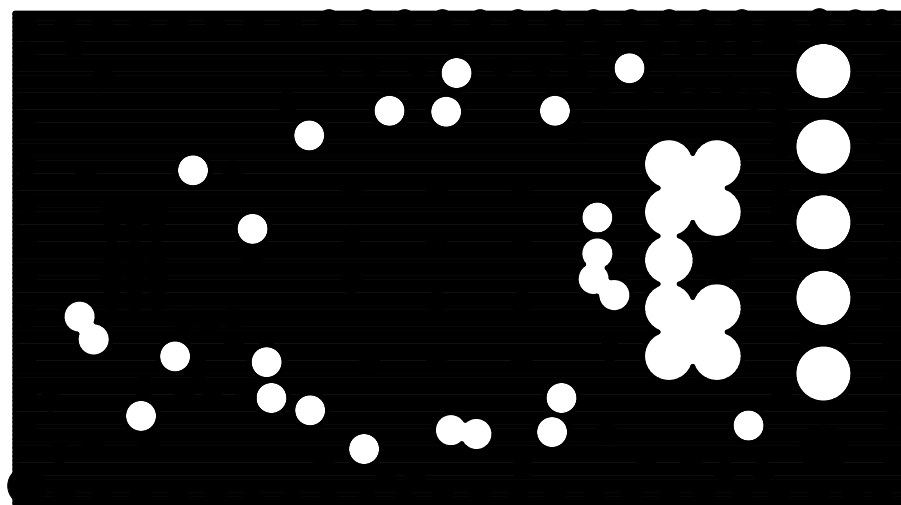


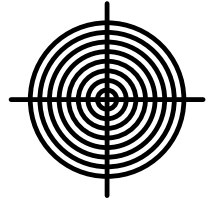
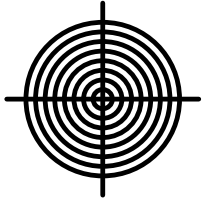
PRIMARY SIDE



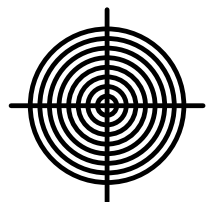
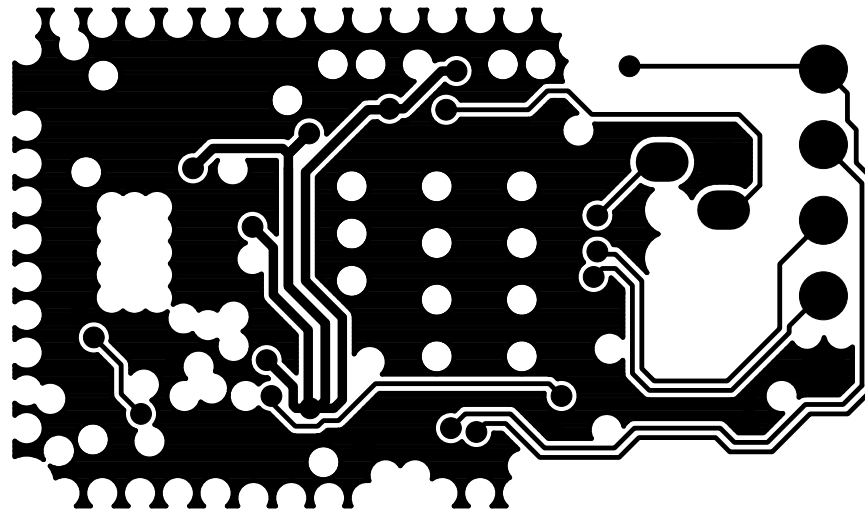


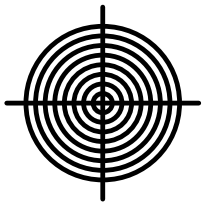
GROUND PLANE



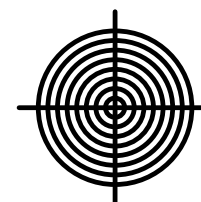
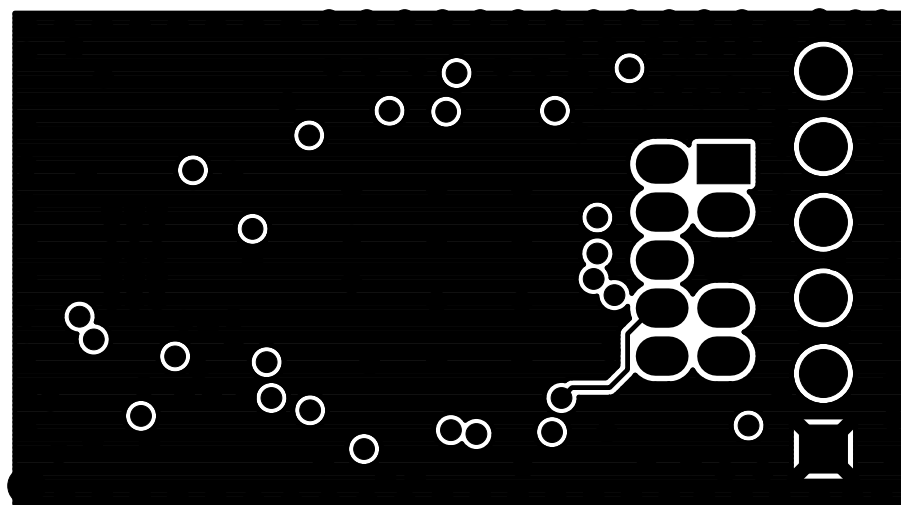
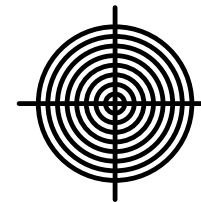


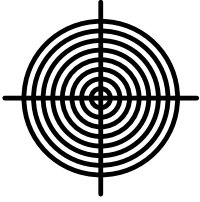
POWER PLANE



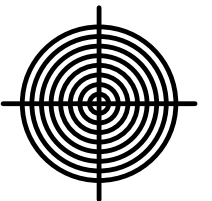
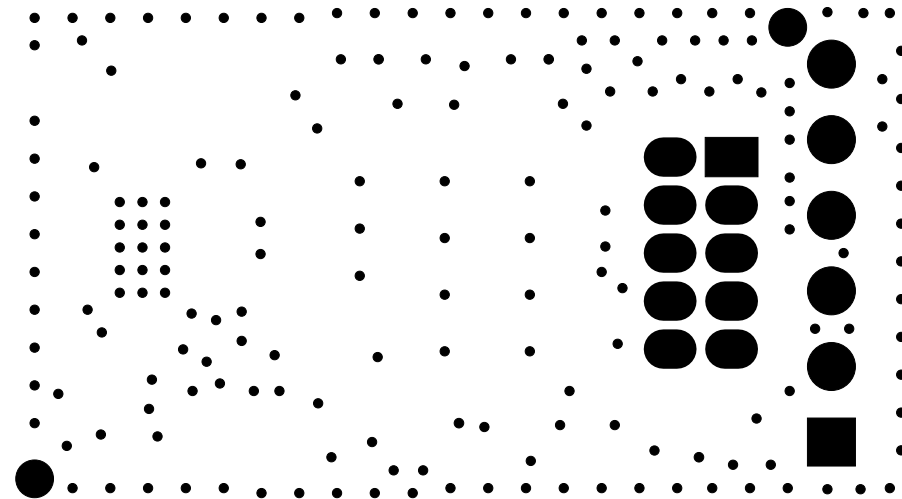
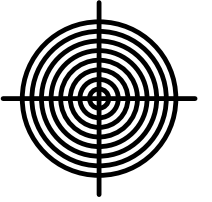


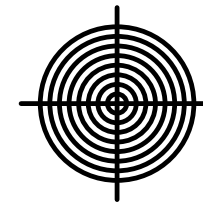
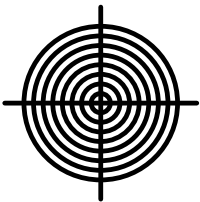
SECONDARY SIDE





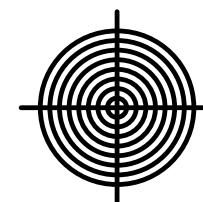
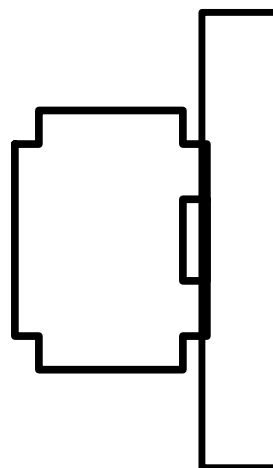
SECONDARY SOLDER MASK

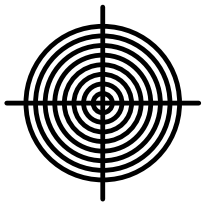




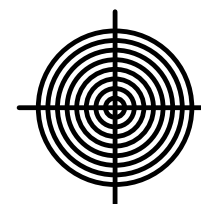
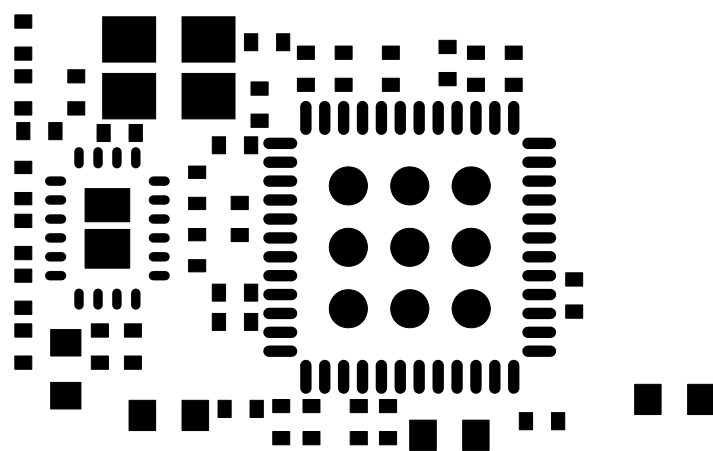
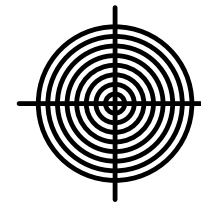
SECONDARY SILKSCREEN

Silabs® I2T-A35 REV 1.1
SILICON LABS

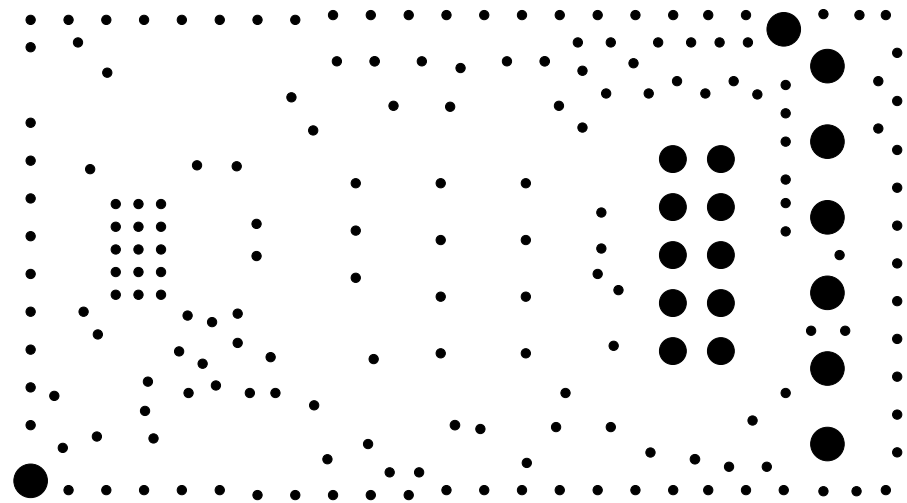


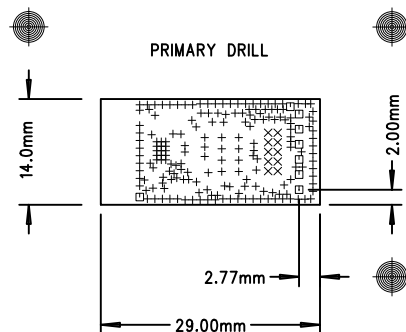


PRIMARY SOLDER PASTE









NOTES : UNLESS OTHERWISE SPECIFIED

1. MANUFACTURE IN ACCORDANCE WITH IPC-6012, TYPE 3, CLASS 2.
2. END PRODUCT FEATURES SHALL NOT VARY MORE THAN 20% FROM ARTWORK ORIGINALS.
3. LAMINATE AND PREPREG SHALL BE AS PER IPC-4101/26,83,98 WITH A DECOMPOSITION TEMPERATURE $\geq 345^{\circ}\text{C}$, COLOR, NATURAL.
4. COPPER WEIGHT SHALL BE 0.5 OZ./SQ. FT. BEFORE PLATING.
5. ALL PLATED THROUGH HOLES SHALL HAVE A MINIMUM OF 0.001" COPPER.
6. DRILL HOLE TOLERANCE AFTER PLATING SHALL BE ± 0.003 ".
7. MINIMUM ANNULAR RING SHALL BE 0.001".
8. MINIMUM ANNULAR RING AT EMERGENT CONDUCTORS SHALL BE 0.003".
9. FINAL PCB THICKNESS SHALL BE 0.031" $\pm 10\%$.
10. WARP/TWIST SHALL NOT EXCEED 1.0%.
11. FINISH SHALL BE LPI, BLACK SMOBC, ENIG BOTH SIDES.
12. SILKSCREEN WITH NONCONDUCTIVE WHITE EPOXY INK.
13. REFERENCE ADDITIONAL FAB NOTES IN FILE README.TXT


LAYER STACKUP

FILE NAMES

PRIMARY SILKSCREEN	A35_PSS.PHO
PRIMARY SOLDERMASK	A35_PSM.PHO
PRIMARY SIDE	A35_PRI.PHO
GROUND PLANE	A35_L02.PHO
POWER PLANE	A35_L03.PHO
SECONDARY SIDE	A35_SEC.PHO
SECONDARY SOLDERMASK	A35_SSM.PHO
SECONDARY SILKSCREEN	A35_SSS.PHO

SCALE: NONE

SIZE	QTY	SYM	PLT	TOOL	TOL
0.25	179	+	P	1	+0/-0.25
0.71	10	X	P	2	+/-0.075
0.89	8	□	P	3	+/-0.075

UNLESS OTHERWISE SPECIFIED			THIS DOCUMENT CONTAINS PROPRIETARY INFORMATION AND SHALL NOT BE DUPLICATED OR USED FOR ANY PURPOSE OTHER THAN THAT FOR WHICH PROVIDED OR DISCLOSED IN WHOLE OR IN PART, WITHOUT THE WRITTEN CONSENT OF SILICON LABORATORIES, INC..			COMPANY:			<div> SILICON LABS 400 W Cesar Chavez AUSTIN, TX 78701 (512)416-8500 www.silabs.com</div>											
DIMENSIONS ARE IN INCHES AND APPLY AFTER FINISH																				
INTERPRET DRAWING PER MIL-D-1000																				
TOLERANCES																				
HOLE TOLERANCES PER 78027						NAME:			IST-A35			REV : 1.1								
DECIMALS .XX +/- .XXX +/-		ANGLES +/-		SURFACES <div><input checked="" type="checkbox"/> MICROINCHES</div>		DESIGN			BK			02NOV2015								
PART TO BE FREE OF BURRS						LAYOUT			CT			03NOV2015								
BREAK EDGES <div>MAX</div>		BEND RADIUS <div>MAX</div>		BEND RELIEF <div>MAX</div>		DO NOT SCALE DRAWING						SCALE 1:1			FABRICATION DRAWING			SHEET 1 OF 1		

REV :
1.1

IST-A35 REV 1.1
Size:
Array: 2.283465 x 3.255906
Part: 1.141732 x 0.551181
Parts On Array:
10 Parts
Matrix:
2 x 5
Spacing:
0.0 x 0.0
Array Borders:
Left: 0.0 Right: 0.0
Top: 0.25 Bottom: 0.25

Notes:

Please add 4, 0.125" NP tooling holes located 0.125" from tab corners and 3, 40/120 fiduials to each side of array located 0.25" from tooling holes.