



EFR32 SubGHz Discrete Wideband Match

780-950 MHz (18-19 dBm)

Board Function	Page
Title Page	1
RF, Antenna & Power	2
EFR32 Signal Assignments	3
WSTK Connectors & Board ID	4

Revision History

Rev.	Description
A00	Release version.



Schematic Title

EFR32 SubGHz Discrete Wideband Match

Page Title

Title Page

Document number

EFR32xG1x\_DISC\_WIDEBAND\_REF\_DES\_A00

Revision

A00

Sheet

1 of 4

Designed:

Approved:

Size

A3

BOM Doc No:

Design Created Date:

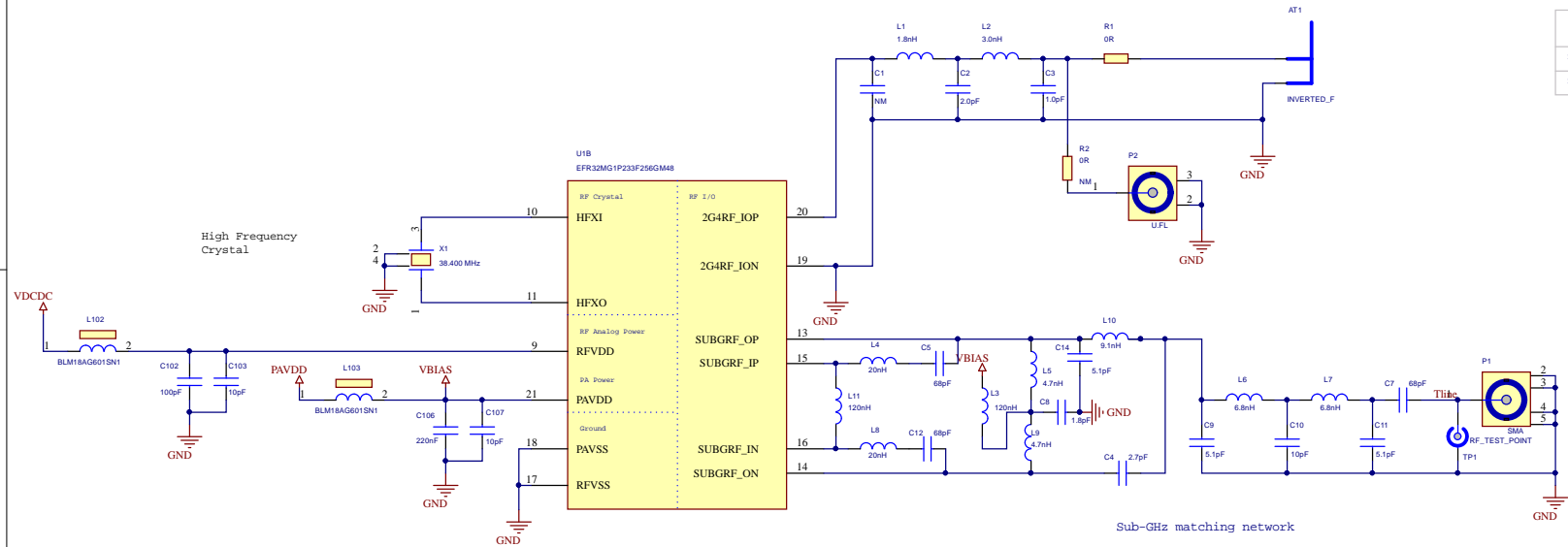
Sheet Created Date:

Sheet Modified Date:

Antenna & Radio Interface

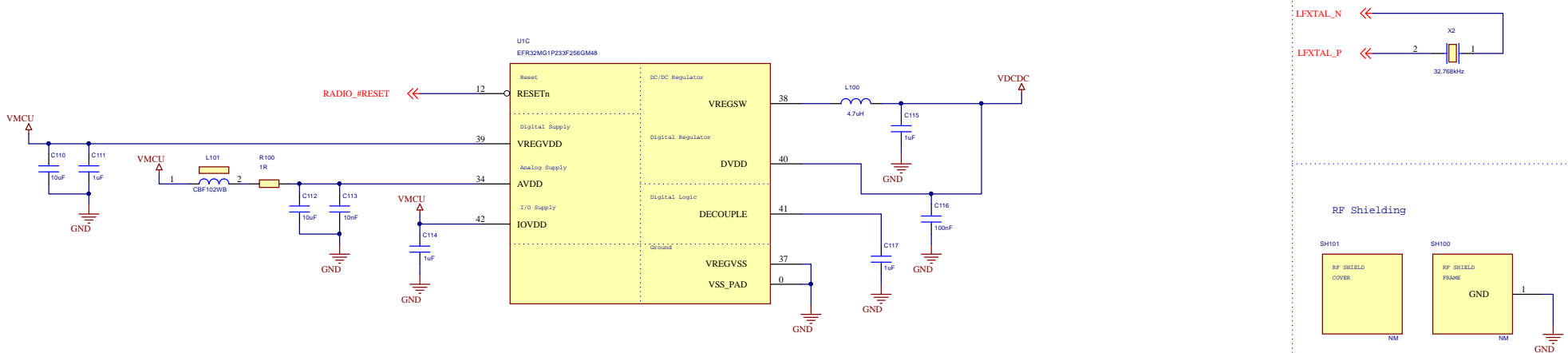
2.4 GHz matching network


PAVDD Configuration



Power & Decoupling

Low Frequency Crystal





**SILICON LABS**

Schematic Title

**EFR32 SubGHz Discrete WB Match - High Band - TN Inductors**

Page Title

**RF, Antenna & Power**

Document number

**EFR32xG1x\_DISC\_WIDEBAND\_REF\_DES\_A00**

Revision

**A00**

Designed:

Approved:

Size

**A3**

BOM Doc No:

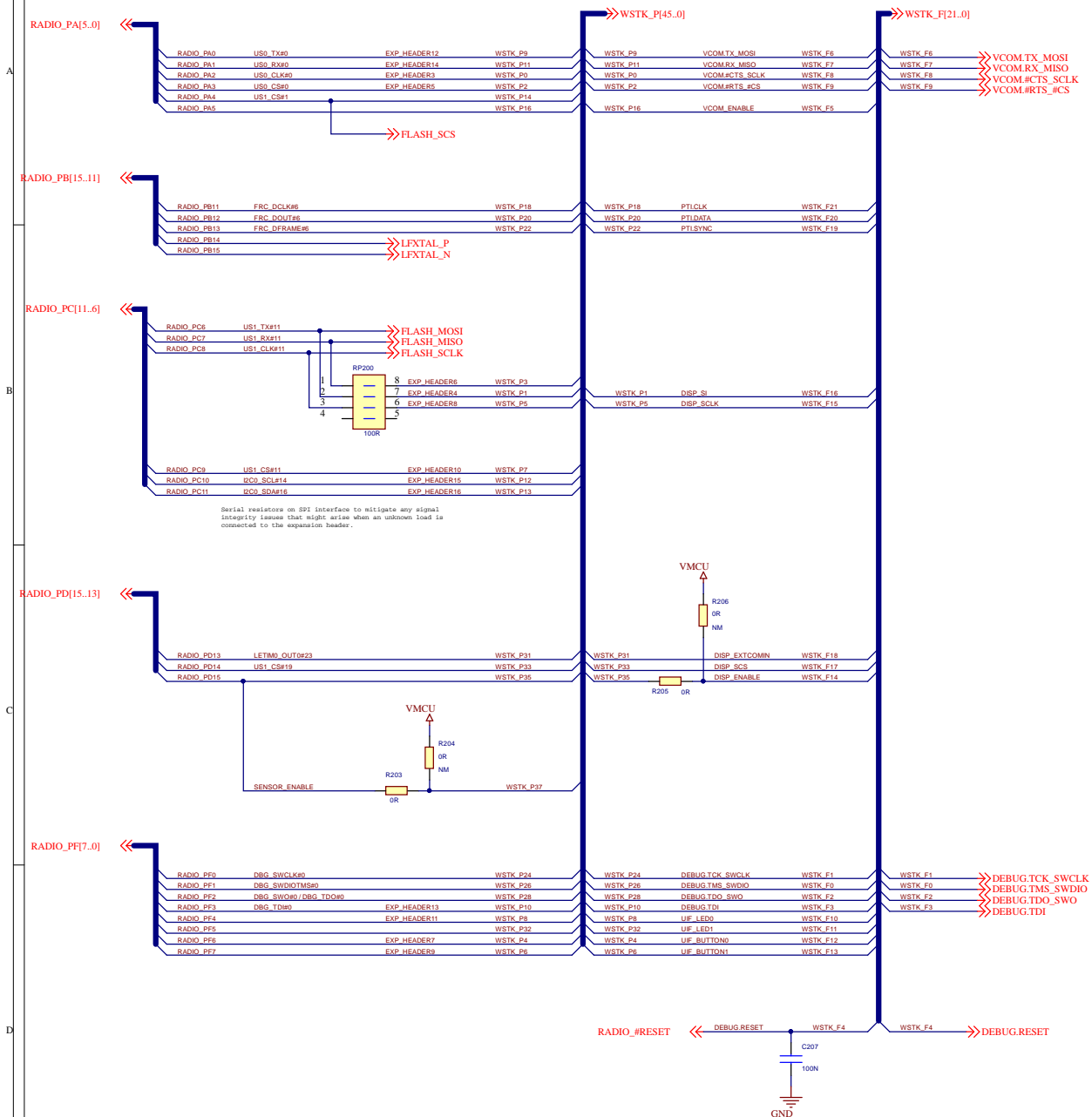
Design Created Date:

Sheet Created Date:

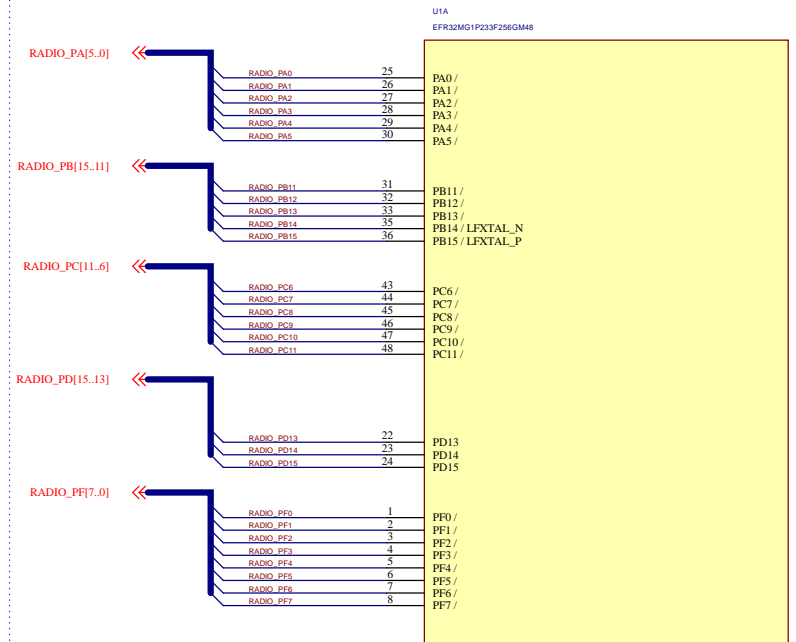
Sheet Modified Date:

Sheet

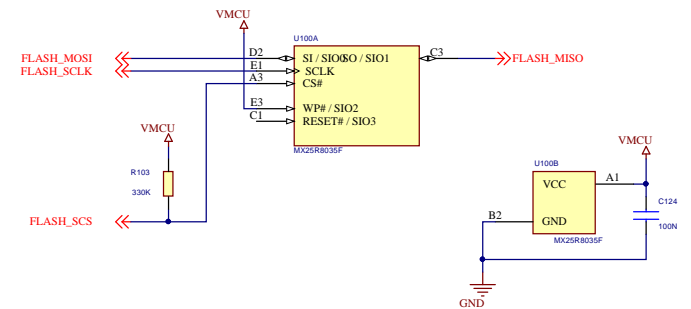
## EFR32 Pin Mapping



## EFR32 I/O Port Pins



## Serial Flash



Schematic Title

### EFR32 SubGHz Discrete WB Match

Page Title

## EFR32 I/O Port Connections

Document number

EFR32xG1x\_DISC\_WIDEBAND\_REF\_DES\_A00

Revision

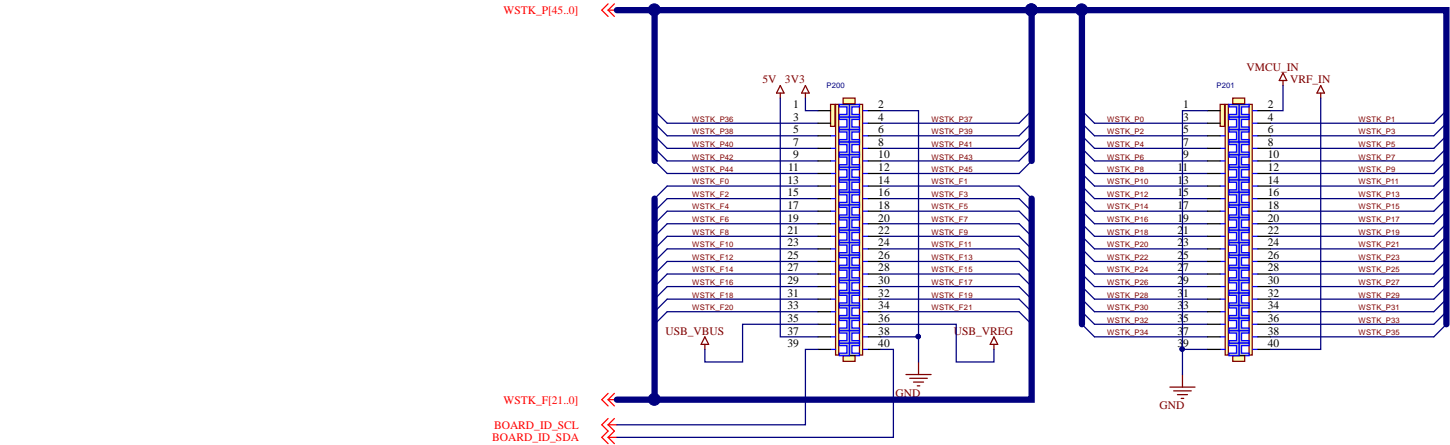
100

Sheet Created Date	
--------------------	--

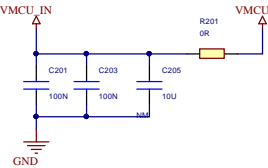
Sheet Modified Date
---------------------

Sheet

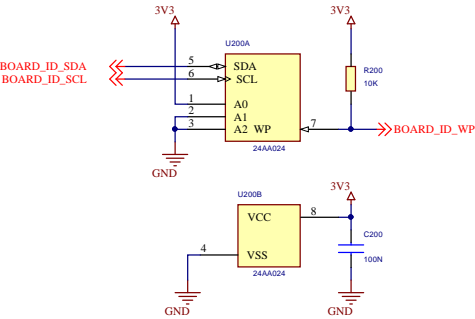
WSTK Connectors



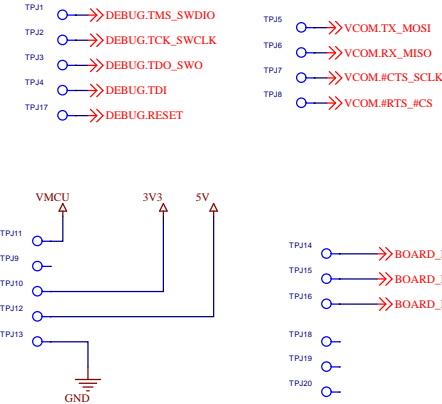
WSTK Power Decoupling



Board Identification



Test Points



 <b>SILICON LABS</b>		Schematic Title	
		<b>EFR32 SubGHz Discrete WB Match</b>	
Designed:		Page Title	
Approved:		<b>WSTK Connectors &amp; Board ID</b>	
Size: A3		Document number	
BOM Doc No:		<b>EFR32xG1x_DISC_WIDEBAND_REF_DES_A00</b>	
Design Created Date:		Revision	
Sheet Created Date:		A00	
Sheet Modified Date:		Sheet	