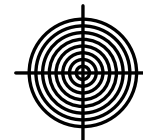
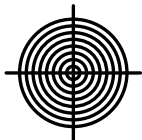
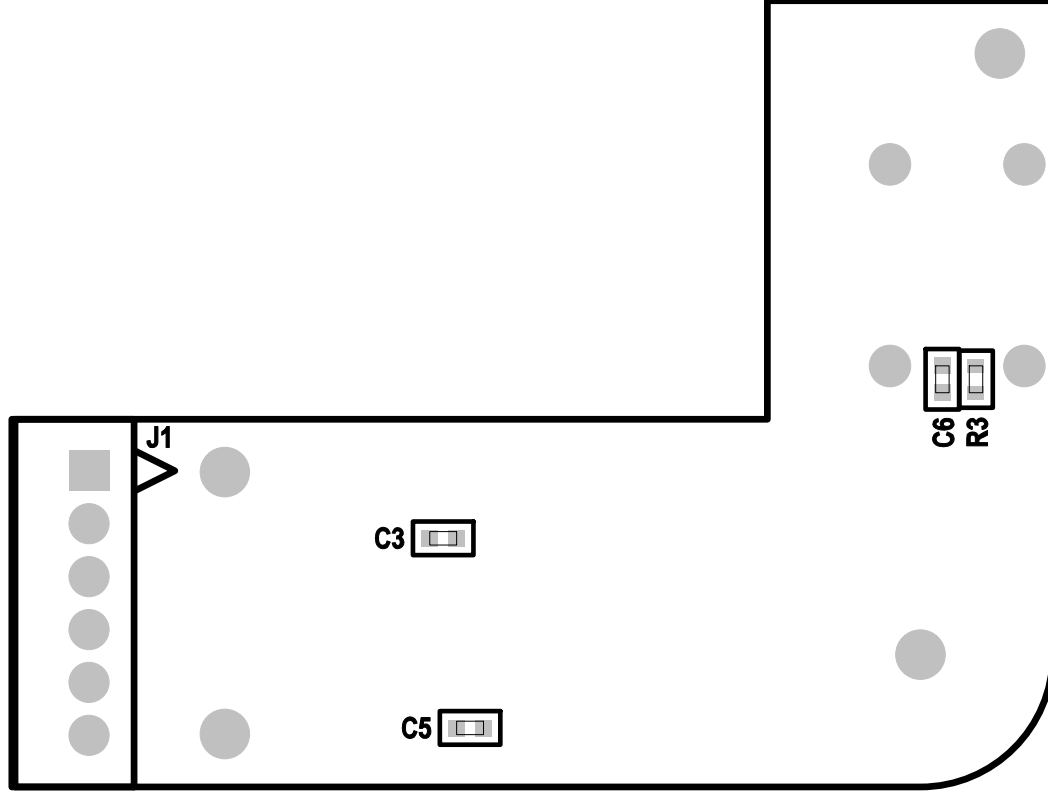
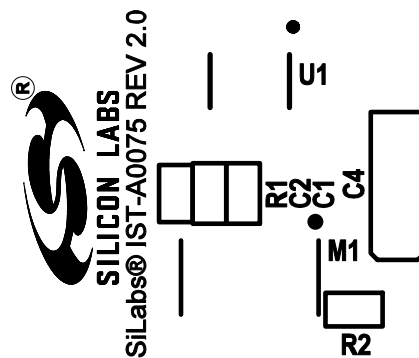
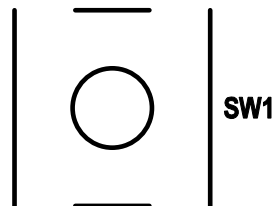
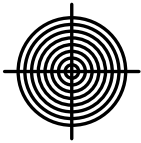


PRIMARY SILKSCREEN

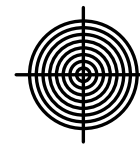
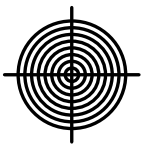


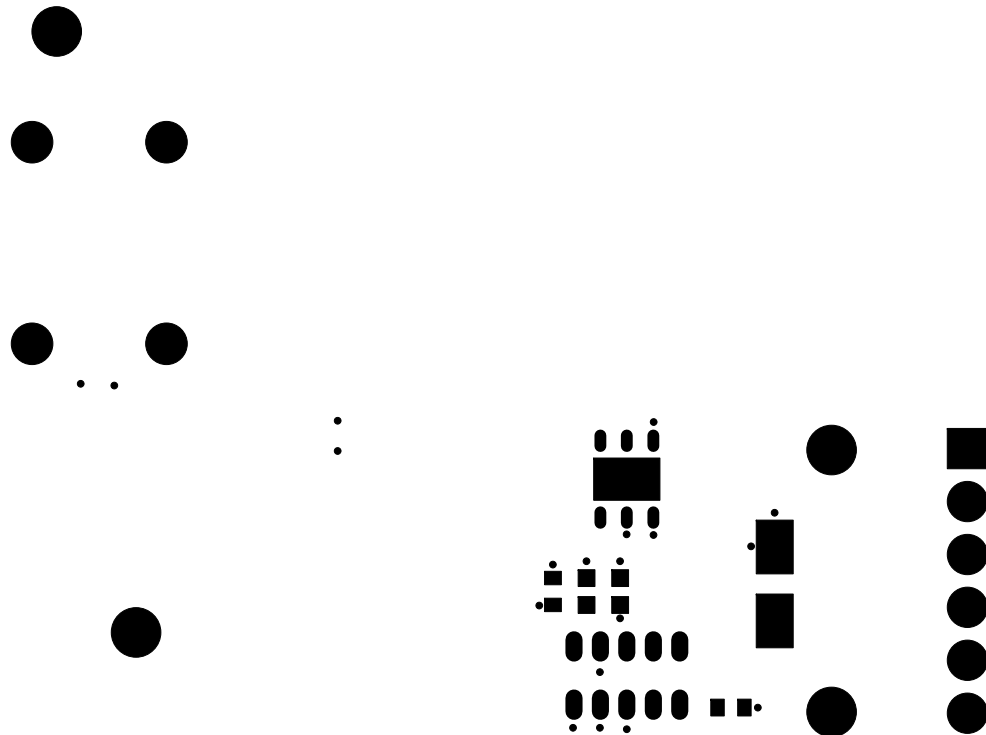
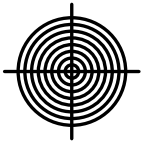
SECONDARY SILKSCREEN



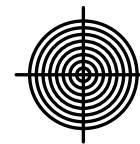
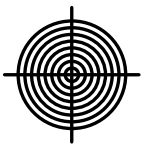


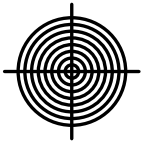
PRIMARY SILKSCREEN



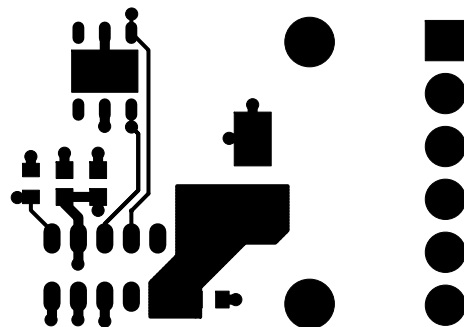


PRIMARY SOLDER MASK

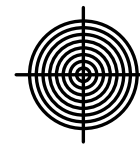
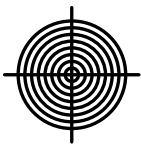


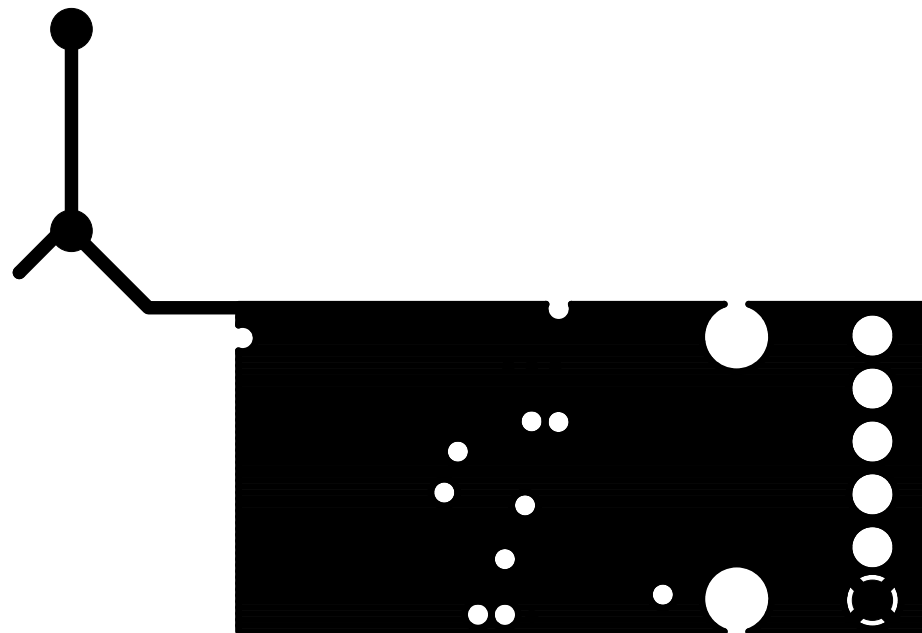
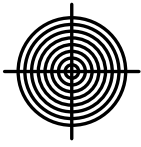


:

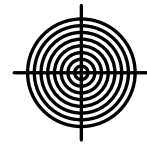
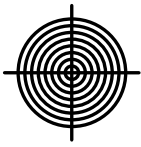


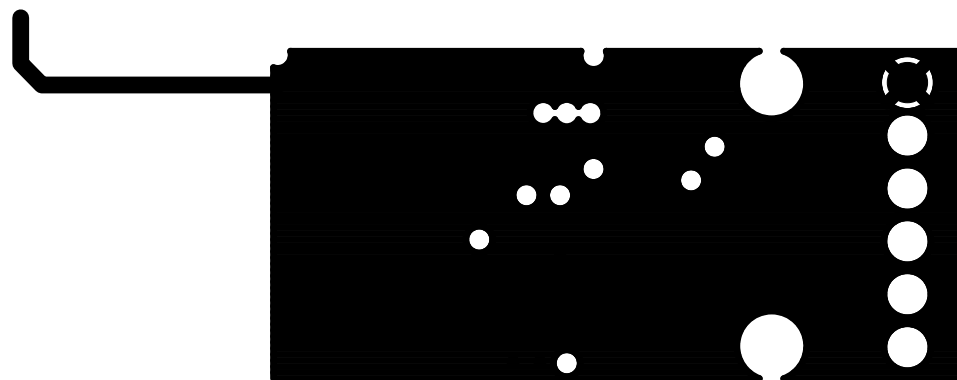
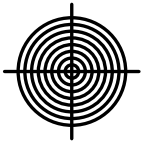
PRIMARY SIDE



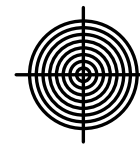
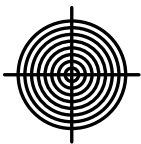


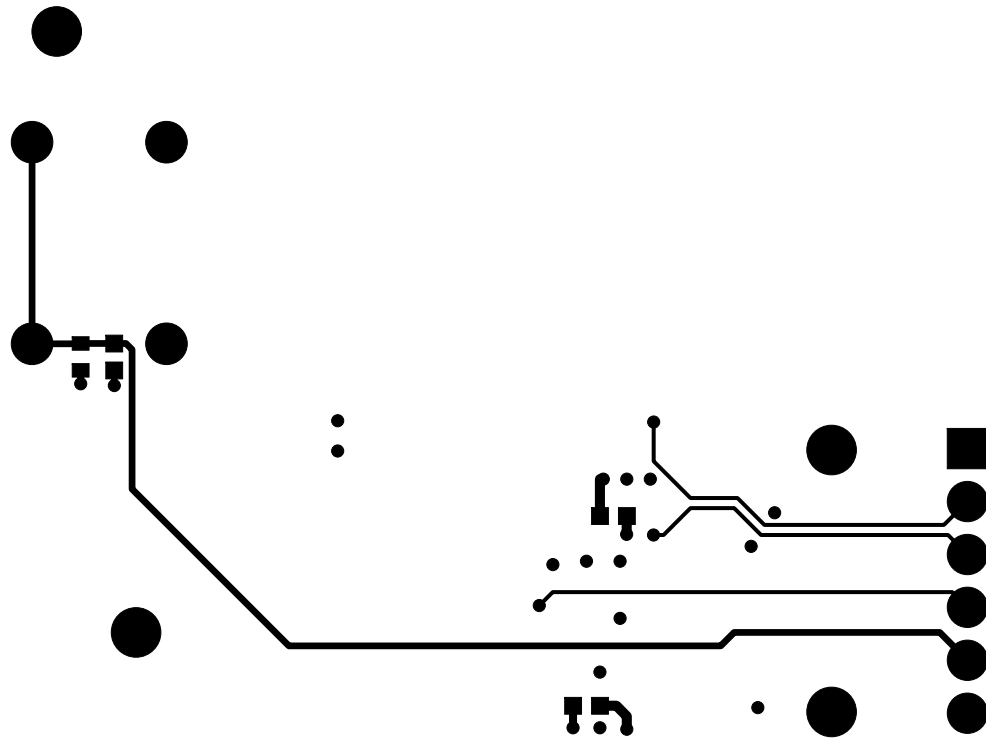
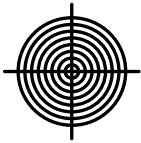
GROUND PLANE



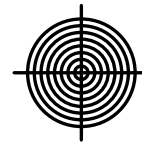
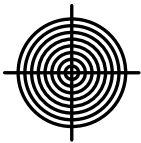


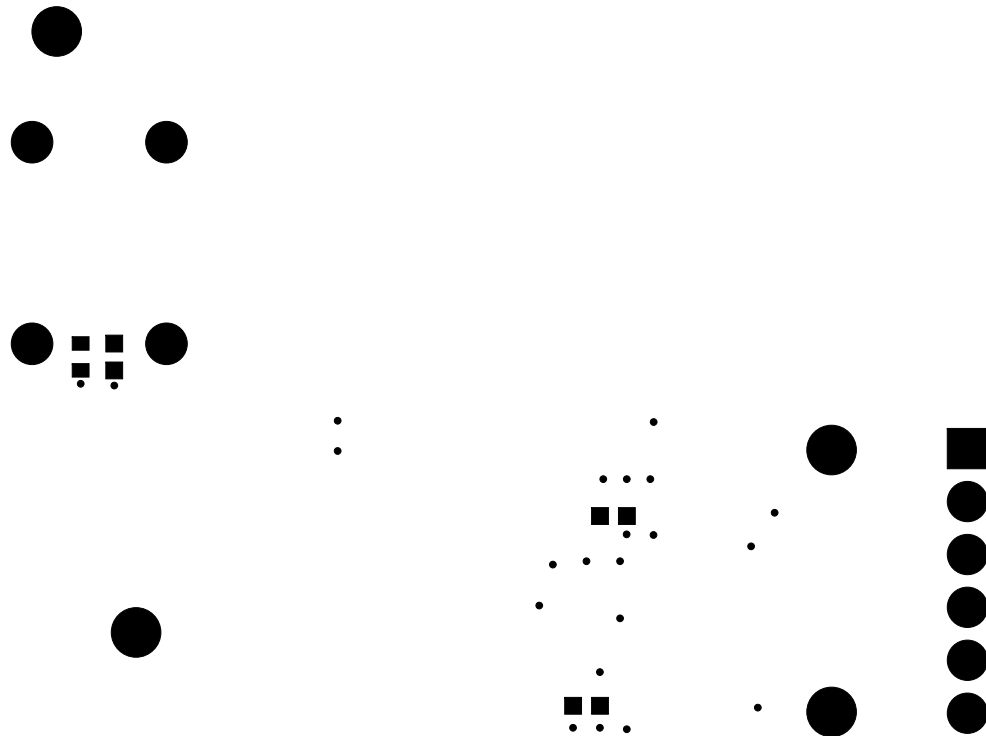
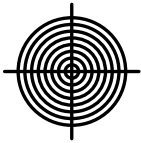
POWER PLANE



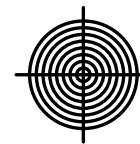
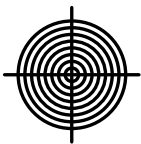


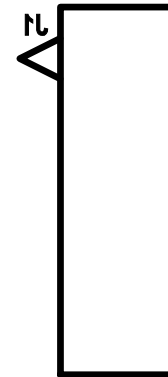
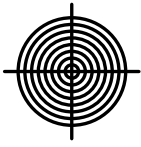
SECONDARY SIDE



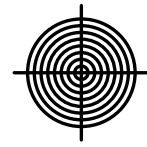
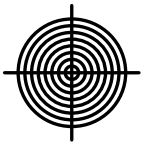


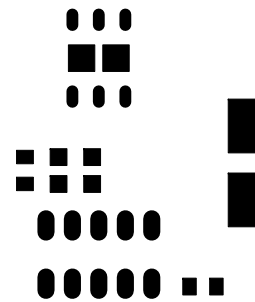
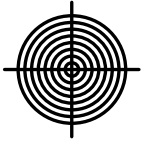
SECONDARY SOLDER MASK



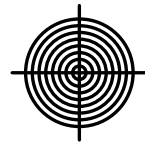
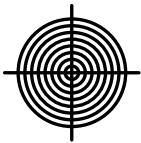


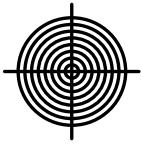
SECONDARY SILKSCREEN



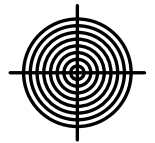
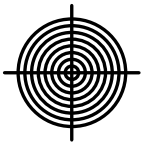


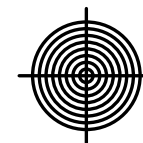
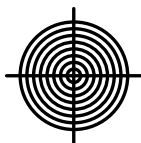
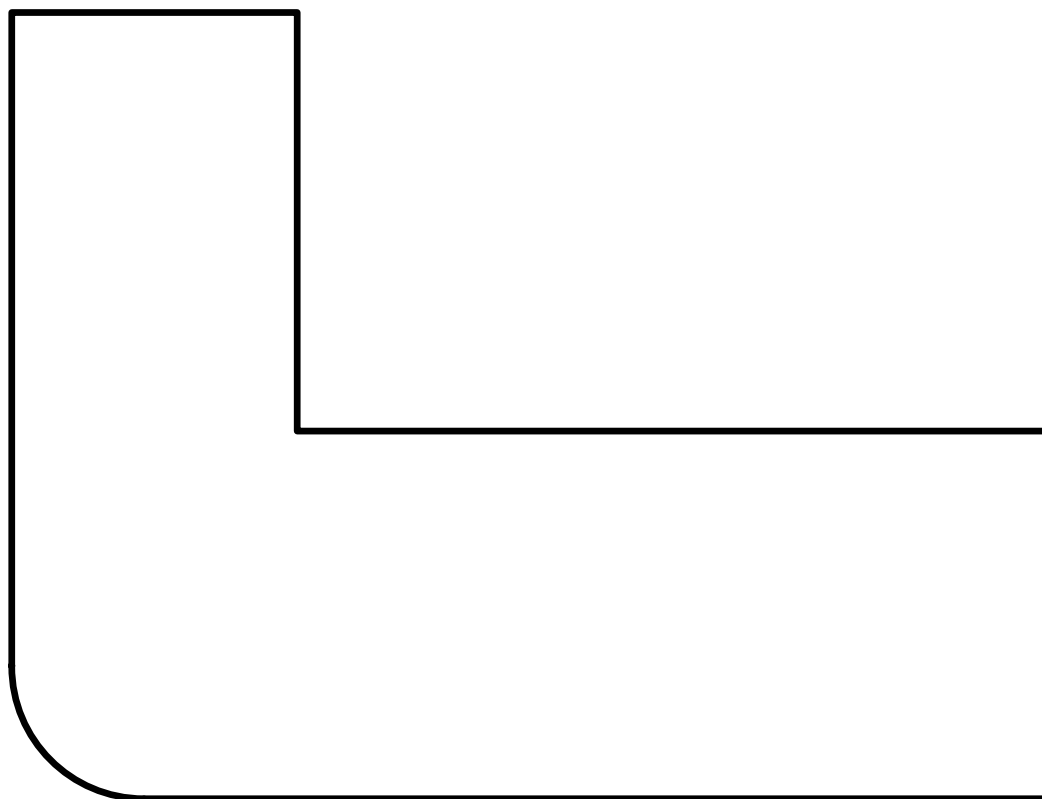
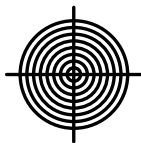
PRIMARY SOLDER PASTE

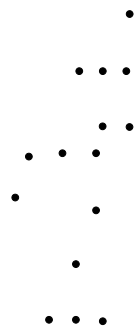
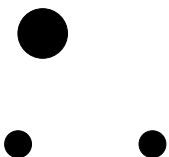


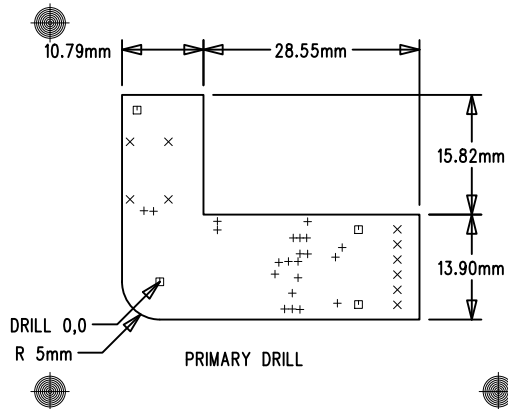


SECONDARY SOLDER PASTE









NOTES : UNLESS OTHERWISE SPECIFIED

1. MANUFACTURE IN ACCORDANCE WITH IPC-6012, TYPE 3, CLASS 2.
2. END PRODUCT FEATURES SHALL NOT VARY MORE THAN 20% FROM ARTWORK ORIGINALS.
3. MATERIAL SHALL BE COPPER CLAD FR-4, NEMA GRADE PER IPC-4101/26, COLOR NATURAL.
4. COPPER WEIGHT SHALL BE 1.0 OZ./SQ. FT. BEFORE PLATING.
5. ALL PLATED THROUGH HOLES SHALL HAVE A MINIMUM OF 0.001" COPPER.
6. DRILL HOLE TOLERANCE AFTER PLATING SHALL BE ± 0.003 ".
7. MINIMUM ANNULAR RING SHALL BE 0.001".
8. MINIMUM ANNULAR RING AT EMERGENT CONDUCTORS SHALL BE 0.003".
9. FINAL PCB THICKNESS SHALL BE 0.062" $\pm 10\%$.
10. WARP/TWIST SHALL NOT EXCEED 1.0%
11. FINISH SHALL BE LPI, BLACK SMOBC, ENIG BOTH SIDES.
12. SILKSCREEN WITH NONCONDUCTIVE WHITE EPOXY INK.
13. REFERENCE ADDITIONAL FAB NOTES IN FILE README.TXT


LAYER STACKUP

FILE NAMES

PRIMARY SILKSCREEN	A75_PSS.PHO
PRIMARY SOLDERMASK	A75_PSM.PHO
PRIMARY SIDE	A75_PRI.PHO
GROUND PLANE	A75_L02.PHO
POWER PLANE	A75_L03.PHO
SECONDARY SIDE	A75_SEC.PHO
SECONDARY SOLDERMASK	A75_SSM.PHO
SECONDARY SILKSCREEN	A75_SSS.PHO

SCALE: NONE

SIZE	QTY	SYM	PLT	TOOL	TOL
0.010	22	+	P	1	+0/-0.010
0.040	10	X	P	2	+/-0.003
0.074	4	□	N	3	+/-0.003

UNLESS OTHERWISE SPECIFIED			THIS DOCUMENT CONTAINS PROPRIETARY INFORMATION AND SHALL NOT BE DUPLICATED OR USED FOR ANY PURPOSE OTHER THAN THAT FOR WHICH PROVIDED OR DISCLOSED IN WHOLE OR IN PART, WITHOUT THE WRITTEN CONSENT OF SILICON LABORATORIES, INC..			COMPANY:  400 W Cesar Chavez AUSTIN, TX 78701 (512)416-8500 www.silabs.com		
DIMENSIONS ARE IN INCHES AND APPLY AFTER FINISH			INTERPRET DRAWING PER MIL-D-1000			NAME: IST-A0075		
TOLERANCES			HOLE TOLERANCES PER 78027			REV : 2.0		
DECIMALS .XX +/- .XXX +/-	ANGLES +/-	SURFACES MICRINCHES	DESIGN	YAS	25APR2016	SIZE	PART NUMBER:	
PART TO BE FREE OF BURRS			LAYOUT	AA	25APR2016	A		
BREAK EDGES MAX	BEND RADIUS MAX	BEND RELIEF MAX	DO NOT SCALE DRAWING			SCALE	1:1	FABRICATION DRAWING
						SHEET 1 OF 1		