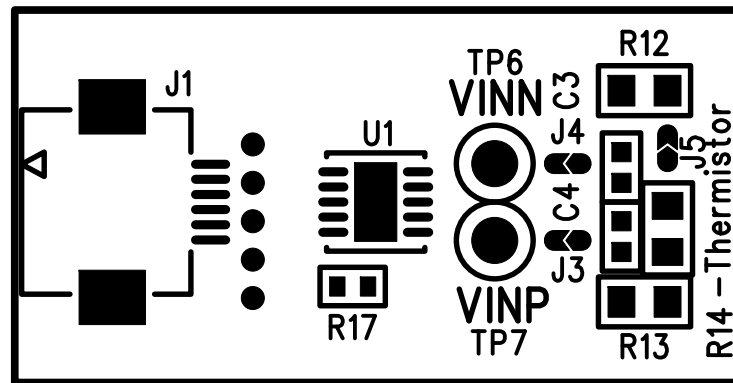
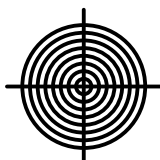
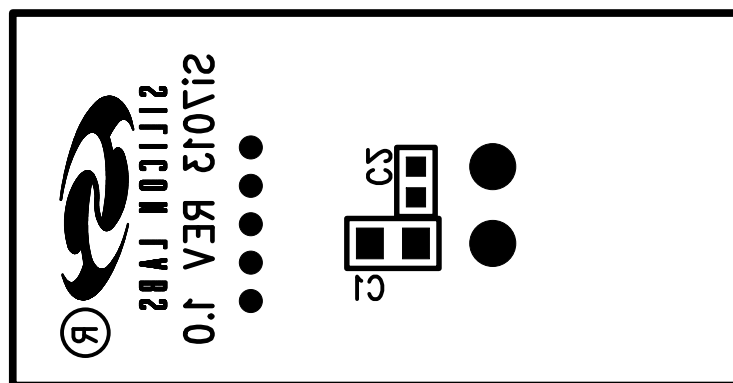
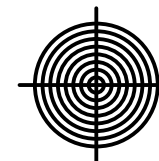
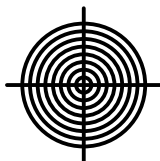


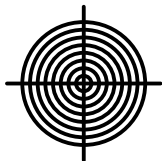
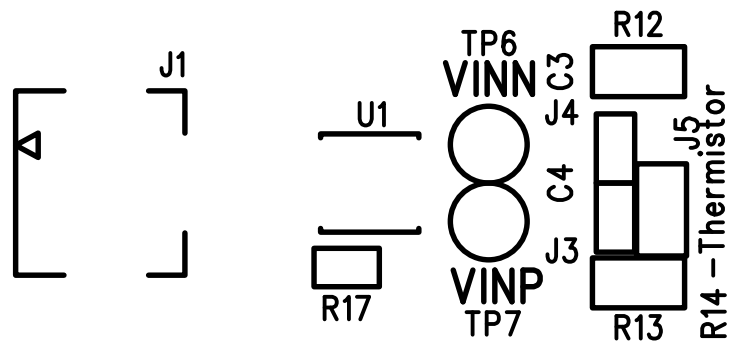
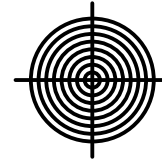
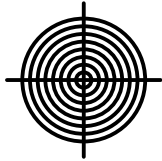
PRIMARY SILKSCREEN



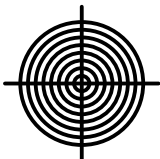
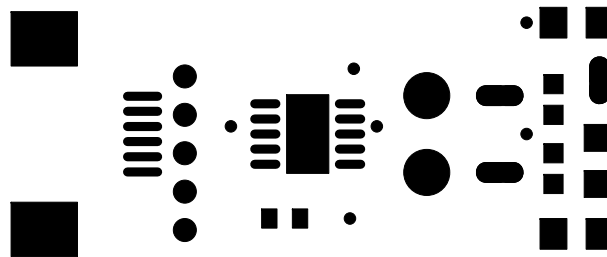
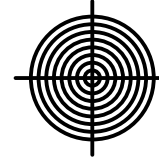
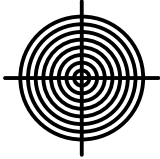
SECONDARY SILKSCREEN



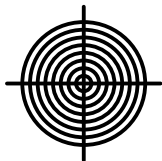
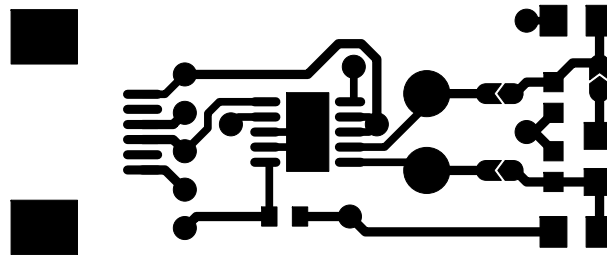
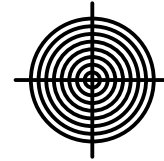
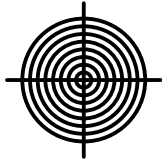
PRIMARY SILKSCREEN



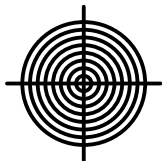
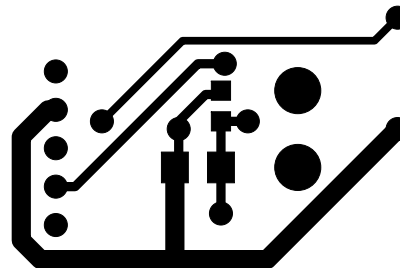
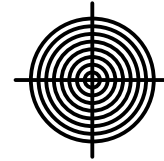
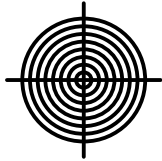
PRIMARY SOLDER MASK



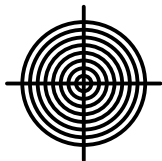
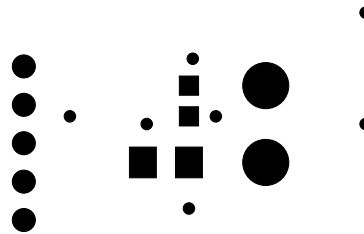
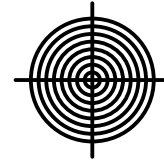
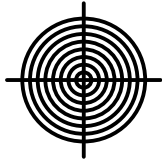
PRIMARY SIDE



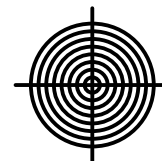
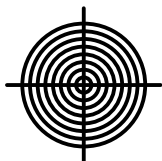
SECONDARY SIDE



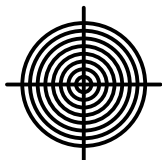
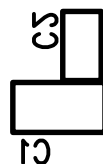
SECONDARY SOLDER MASK



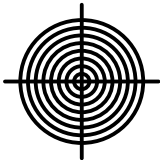
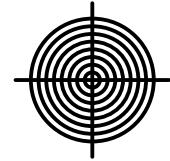
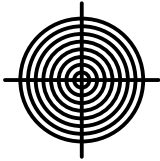
SECONDARY SILKSCREEN



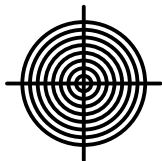
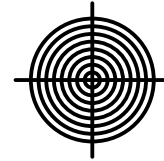
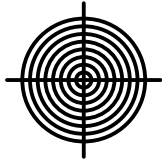
211013 REV 1.0
2111011 TVB2
(R)



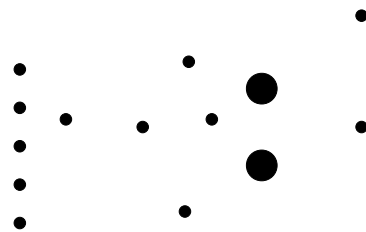
PRIMARY SOLDER PASTE

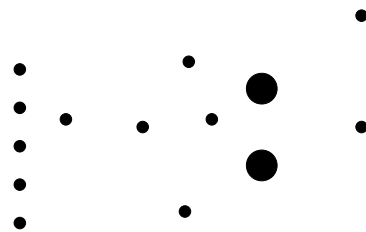


SECONDARY SOLDER PASTE









NOTES : UNLESS OTHERWISE SPECIFIED

1. MANUFACTURE IN ACCORDANCE WITH IPC-6012, TYPE 3, CLASS 2.
2. END PRODUCT FEATURES SHALL NOT VARY MORE THAN 20% FROM ARTWORK ORIGINALS.
3. LAMINATE AND PREPREG SHALL BE AS PER IPC-4101/26,83,98 WITH A DECOMPOSITION TEMPERATURE $\geq 345^{\circ}\text{C}$, COLOR, NATURAL.
4. COPPER WEIGHT SHALL BE 1.0 OZ./SQ. FT. BEFORE PLATING.
5. ALL PLATED THROUGH HOLES SHALL HAVE A MINIMUM OF 0.001" COPPER.
6. DRILL HOLE TOLERANCE AFTER PLATING SHALL BE ± 0.003 ".
7. MINIMUM ANNULAR RING SHALL BE 0.001".
8. MINIMUM ANNULAR RING AT EMERGENT CONDUCTORS SHALL BE 0.003".
9. FINAL PCB THICKNESS SHALL BE 0.062" $\pm 10\%$.
10. WARP/TWIST SHALL NOT EXCEED 1.0%
11. FINISH SHALL BE LPI, GREEN S.M.O.B.C., BALANCE ENIG.
12. SILKSCREEN WITH NONCONDUCTIVE WHITE EPOXY INK.
13. REFERENCE ADDITIONAL FAB NOTES IN FILE README.TXT

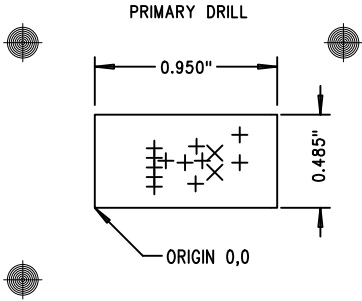
LAYER STACKUP



FILE NAMES

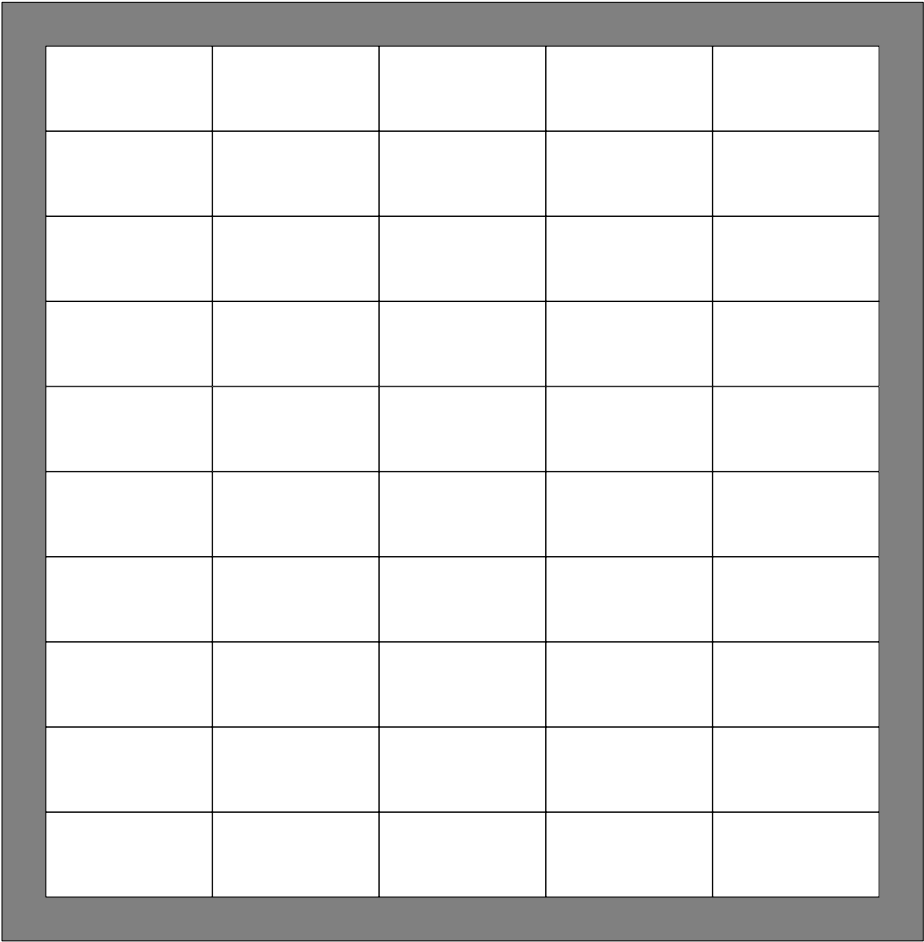
PRIMARY SILKSCREEN	7013-EVB_PSS.PHO
PRIMARY SOLDERMASK	7013-EVB_PSM.PHO
PRIMARY SIDE	7013-EVB_PRI.PHO
SECONDARY SIDE	7013-EVB_SEC.PHO
SECONDARY SOLDERMASK	7013-EVB_SSM.PHO
SECONDARY SILKSCREEN	7013-EVB_SSS.PHO

SCALE: NONE

SIZE	QTY	SYM	PLT	TOOL	TOL
0.015	12	+	P	1	+0/-0.015
0.040	2	X	P	2	+/-0.003



UNLESS OTHERWISE SPECIFIED			THIS DOCUMENT CONTAINS PROPRIETARY INFORMATION AND SHALL NOT BE DUPLICATED OR USED FOR ANY PURPOSE OTHER THAN THAT FOR WHICH PROVIDED OR DISCLOSED IN WHOLE OR IN PART, WITHOUT THE WRITTEN CONSENT OF SILICON LABORATORIES, INC..			COMPANY:  400 W Cesar Chavez AUSTIN, TX 78701 (512)416-8500 www.silabs.com					
DIMENSIONS ARE IN INCHES AND APPLY AFTER FINISH DIMENSIONS IN BRACKETS [] ARE IN MILLIMETERS INTERPRET DRAWING PER MIL-D-1000			DESIGN JG 01MAR2013 LAYOUT CT 11MAR2013			NAME: Si7013-EVB			REV : 1.0		
TOLERANCES HOLE TOLERANCES PER 78027											
DECIMALS .XX +/- .XXX +/-	ANGLES +/-	SURFACES MICROINCHES 									
PART TO BE FREE OF BURRS											
BREAK EDGES MAX	BEND RADIUS MAX	BEND RELIEF MAX	DO NOT SCALE DRAWING			SCALE 1:1			FABRICATION DRAWING		
									SHEET 1 OF 1		



Si7013-EVB REV 1.0

Size:

Array: 5.25 x 5.35

Part: 0.95 x 0.485

Parts On Array:

50 Parts

Matrix:

5 x 10

Spacing:

0.0 x 0.0

Array Borders:

Left: 0.25 Right: 0.25

Top: 0.25 Bottom: 0.25

Notes:

Please add 4, 0.125" NP tooling holes located 0.125" from tab corners and 3, 40/120 fiduials to each side of array located 0.25" from tooling holes.