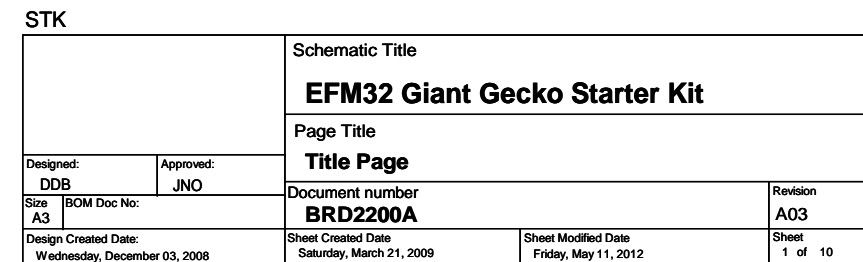




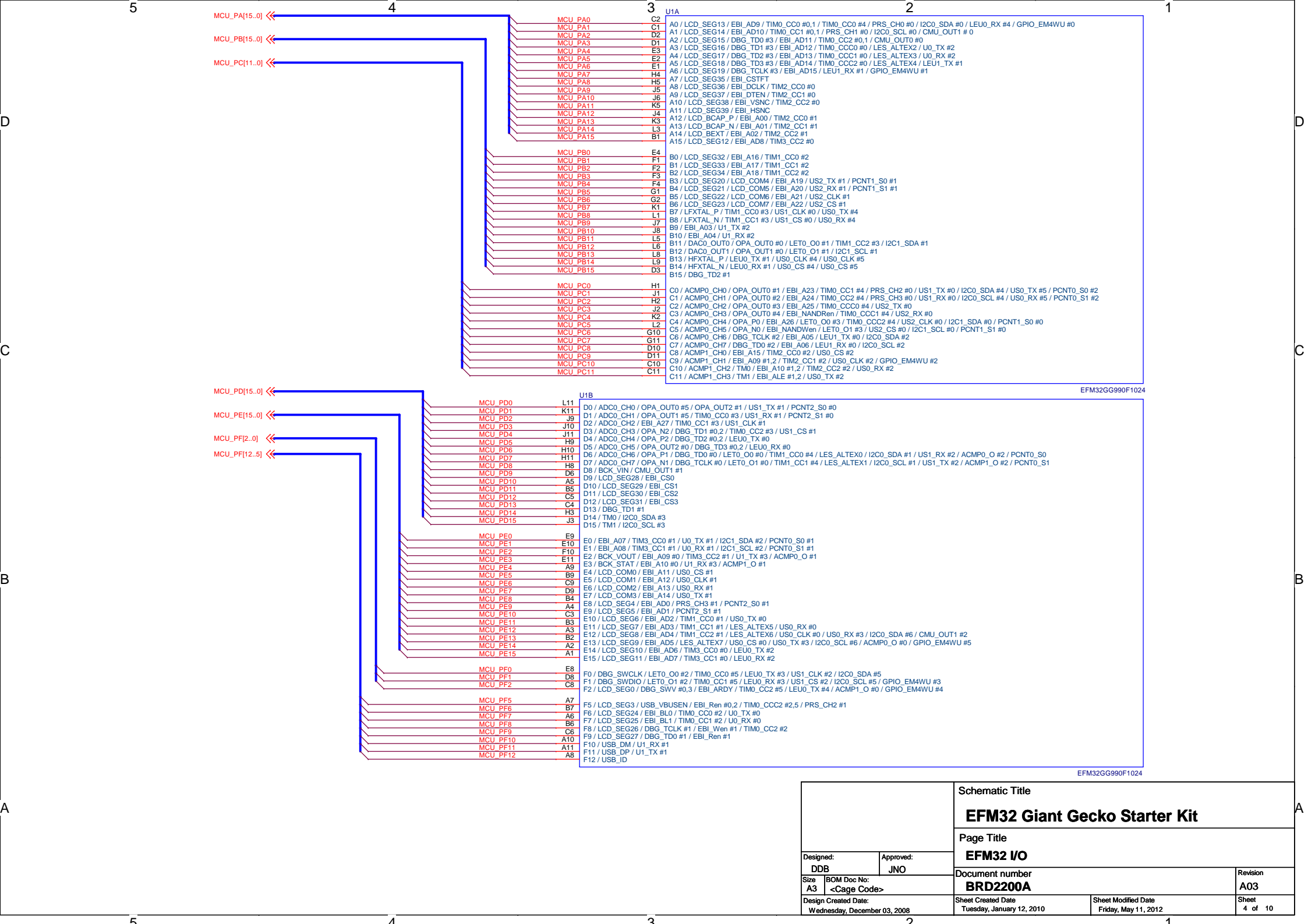
Board Function	Page
Title Page	1
User Interface	2
Signal Assignments	3
EFM32 I/O	4
EFM32 Power	5
LCD	6
Power & Misc	7
Advanced Energy Monitor	8
Debug Interface	9
Control MCU	10

Rev.	Description
A00	Incorporated new AEM solution. Added capacitor for backup power domain.
A01	Cleanup of unused parts. Removed legacy AEM and sense range 3.
A02	Updated EFM32 to Giant Gecko Rev.D
A03	Fixed PCB error. Added test points for EFM32 USB.

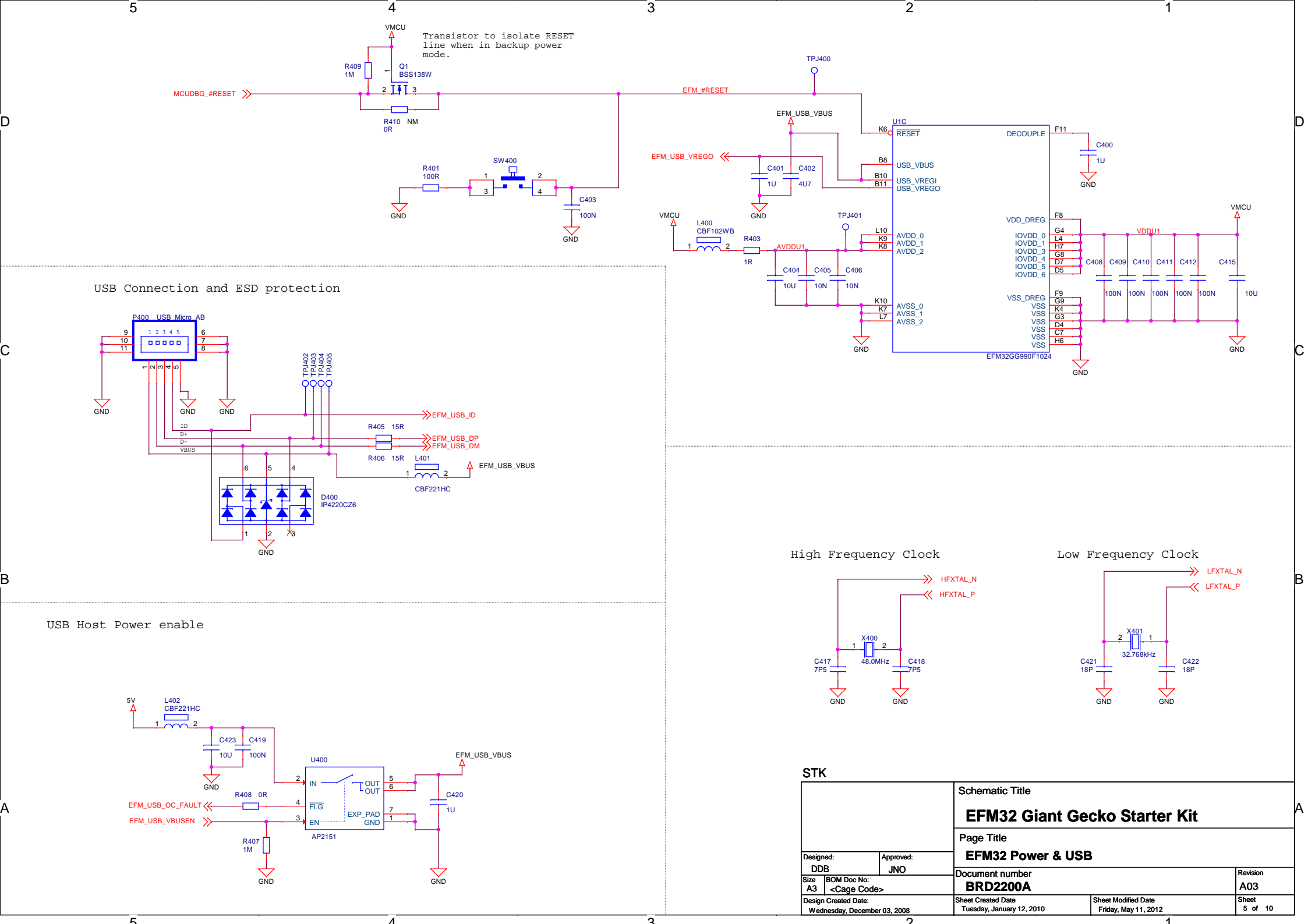




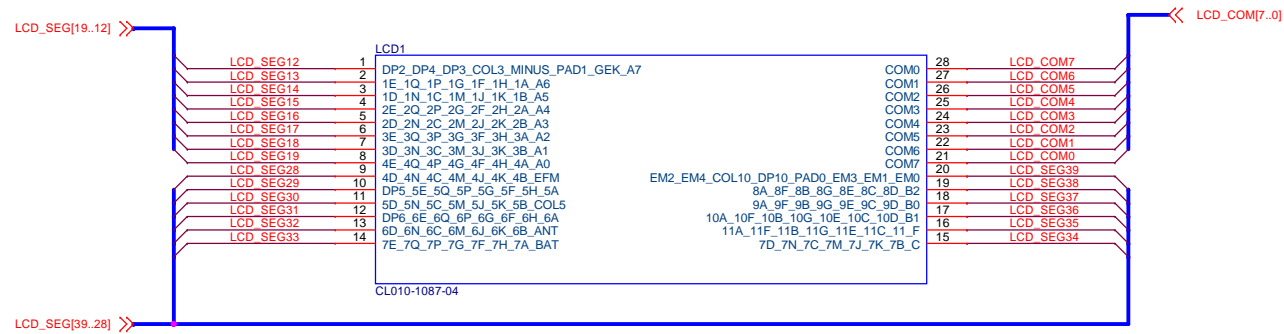




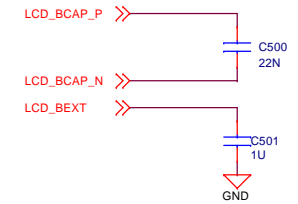
		Schematic Title		
		EFM32 Giant Gecko Starter Kit		
		Page Title		
		EFM32 I/O		
Designed: DDB	Approved: JNO	Document number BRD2200A		
Size A3	BOM Doc No: <Cage Code>			
Design Created Date: Wednesday, December 03, 2008		Sheet Created Date Tuesday, January 12, 2010	Sheet Modified Date Friday, May 11, 2012	Revision A03
				Sheet 4 of 10



## LCD signal connections



## LCD Boost

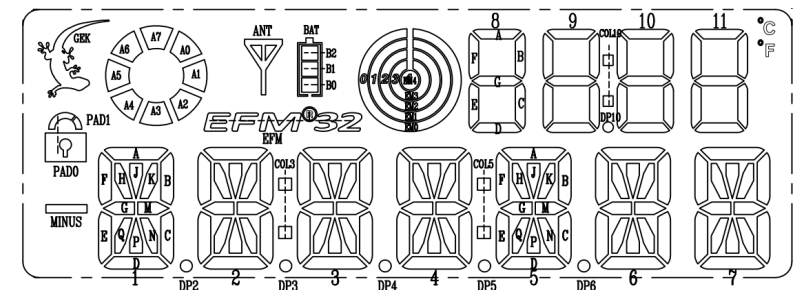


Segment names

PIN	1	2	3	4	5	6	7	8	9	10	11	12	13	14
——	S0	S1	S2	S3	S4	S5	S6	S7	S8	S9	S10	S11	S12	S13
COM0	DP2	1 E	1 D	2 E	2 D	3 E	3 D	4 E	4 D	DP5	5 D	DP6	6 D	7 E
COM1	DP4	1 Q	1 N	2 Q	2 N	3 Q	3 N	4 Q	4 N	5 E	5 N	6 E	6 N	7 Q
COM2	DP3	1 P	1 C	2 P	2 C	3 P	3 C	4 P	4 C	5 Q	5 C	6 Q	6 C	7 P
COM3	COL3	1 G	1 M	2 G	2 M	3 G	3 M	4 G	4 M	5 P	5 M	6 P	6 M	7 G
COM4	MINUS	1 F	1 J	2 F	2 J	3 F	3 J	4 F	4 J	5 G	5 J	6 G	6 J	7 F
COM5	PAD1	1 H	1 K	2 H	2 K	3 H	3 K	4 H	4 K	5 F	5 K	6 F	6 K	7 H
COM6	GEK	1 A	1 B	2 A	2 B	3 A	3 B	4 A	4 B	5 H	5 B	6 H	6 B	7 A
COM7	A7	A6	A5	A4	A3	A2	A1	A0	EFM	5 A	COL5	6 A	ANT	BAT

PIN	15	16	17	18	19	20	21	22	23	24	25	26	27	28
——	S14	S15	S16	S17	S18	S19	COM7	COM6	COM5	COM4	COM3	COM2	COM1	COM0
COM0	7 D	11 A	10 A	9 A	8 A	EM2								COM0
COM1	7 N	11 F	10 F	9 F	8 F	EM4							COM1	
COM2	7 C	11 B	10 B	9 B	8 B	COL10						COM2		
COM3	7 M	11 G	10 G	9 G	8 G	DP10					COM3			
COM4	7 J	11 E	10 E	9 E	8 E	PAD0				COM4				
COM5	7 K	11 C	10 C	9 C	8 C	EM3			COM5					
COM6	7 B	11 D	10 D	9 D	8 D	EM1		COM6						
COM7	°C	°F	B1	B0	B2	EM0	COM7							

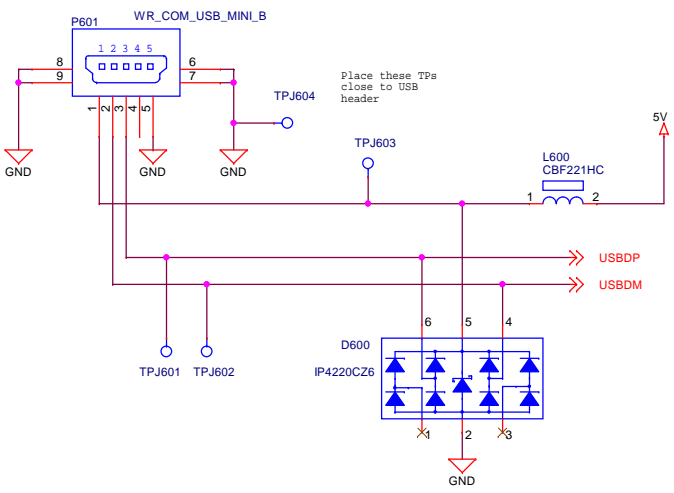
## Segment placement



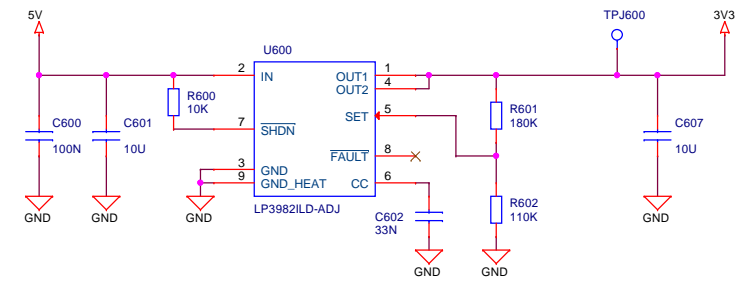
## STK

<div> <div></div> <div></div> </div>		Schematic Title	
		<b>EFM32 Giant Gecko Starter Kit</b>	
		Page Title	
Designed: DDB	Approved: JNO	LCD	
Size A3	BOM Doc No: <Cage Code>	Document number <b>BRD2200A</b>	Revision <b>A03</b>
Design Created Date: Wednesday, December 03, 2008		Sheet Created Date Tuesday, January 12, 2010	Sheet Modified Date Friday, May 11, 2012
			Sheet 6 of 10

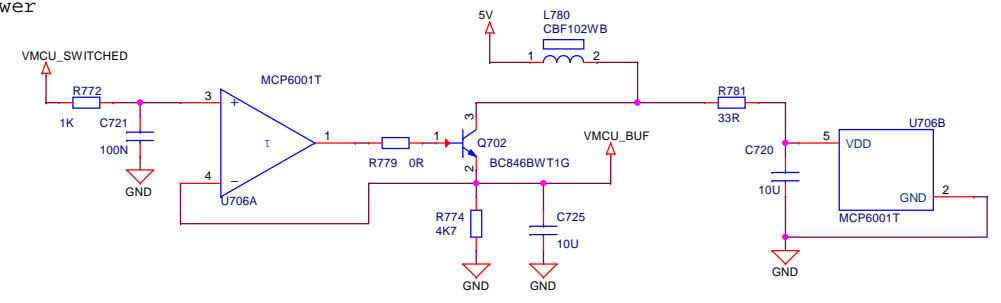
Power input



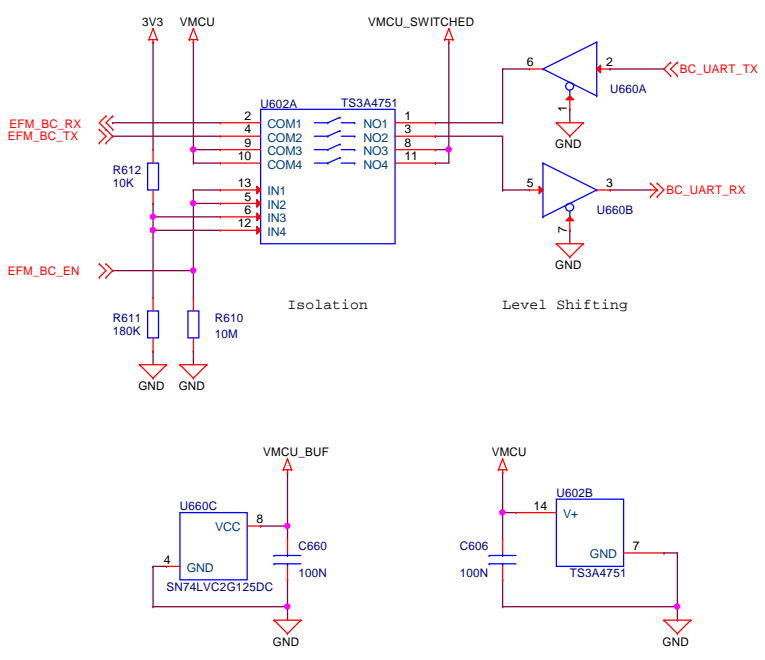
3V3 Regulator



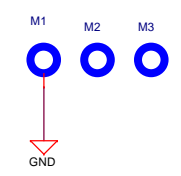
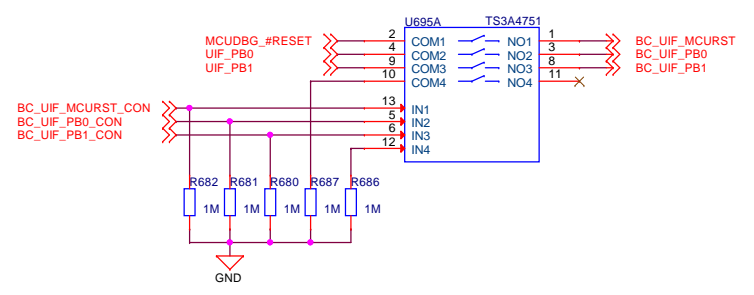
VMCU\_DBG power



VMCU Switch  
Board Controller communication switch



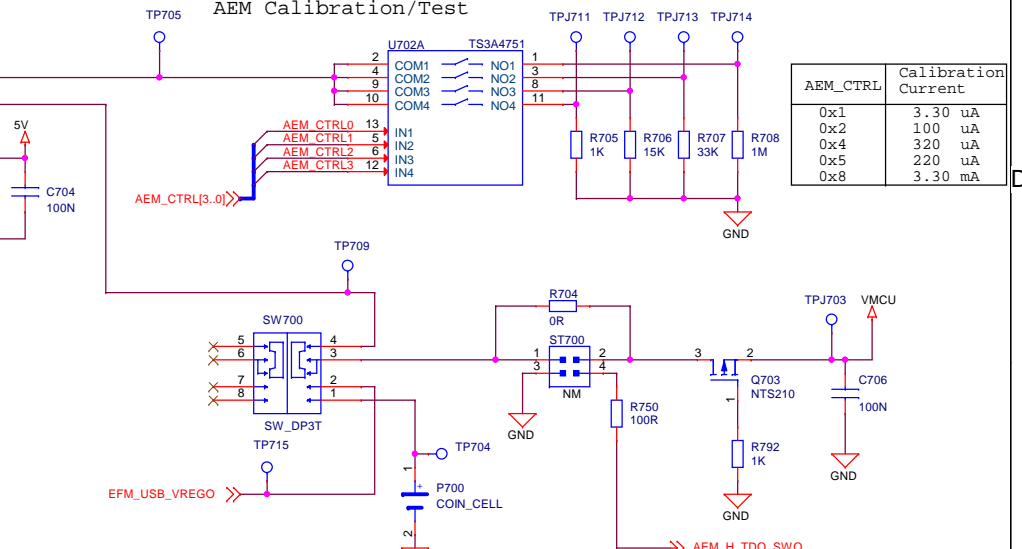
User input to board controller



STK

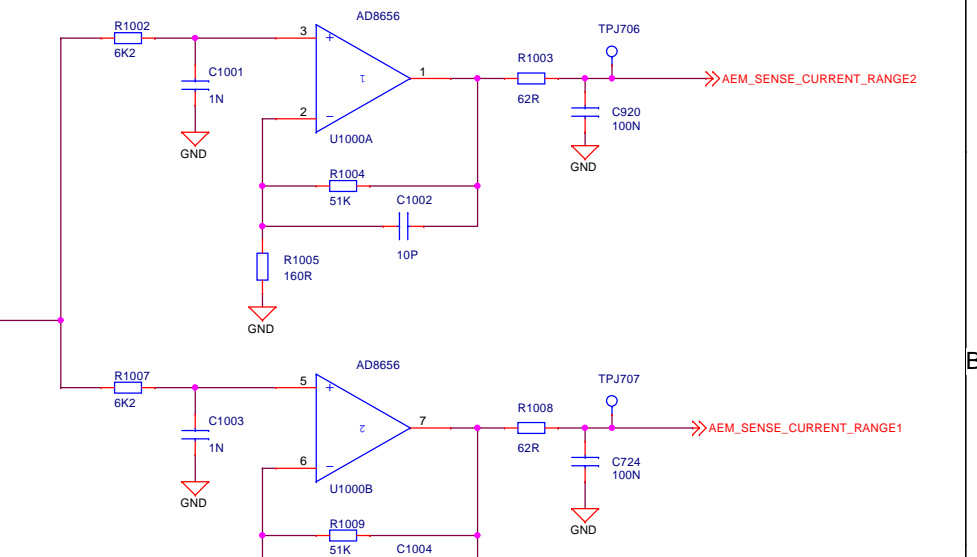
Designed: DDB		Approved: JNO		Schematic Title <b>EFM32 Giant Gecko Starter Kit</b>	
Size A3		BOM Doc No: <Cage Code>		Page Title <b>Power &amp; Misc</b>	
Design Created Date: Wednesday, December 03, 2008		Sheet Created Date Saturday, March 21, 2009		Document number <b>BRD2200A</b>	
		Sheet Modified Date Friday, May 11, 2012		Revision <b>A03</b>	
				Sheet 7 of 10	

## 1

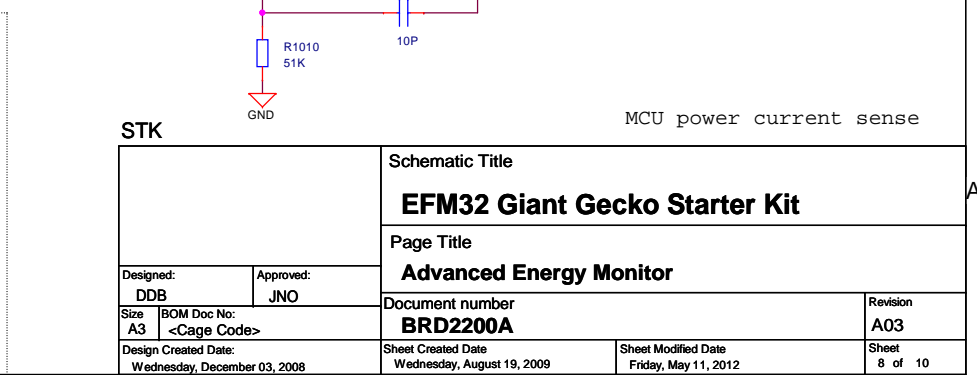


AEM_CTRL	Calibration Current
0x1	3.30 uA
0x2	100 uA
0x4	320 uA
0x5	220 uA
0x8	3.30 mA

## 1



## 1



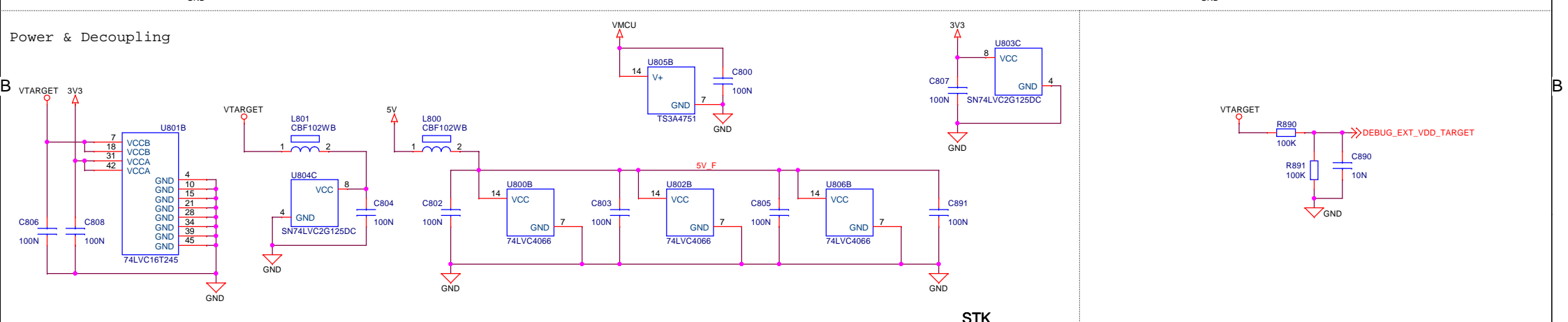
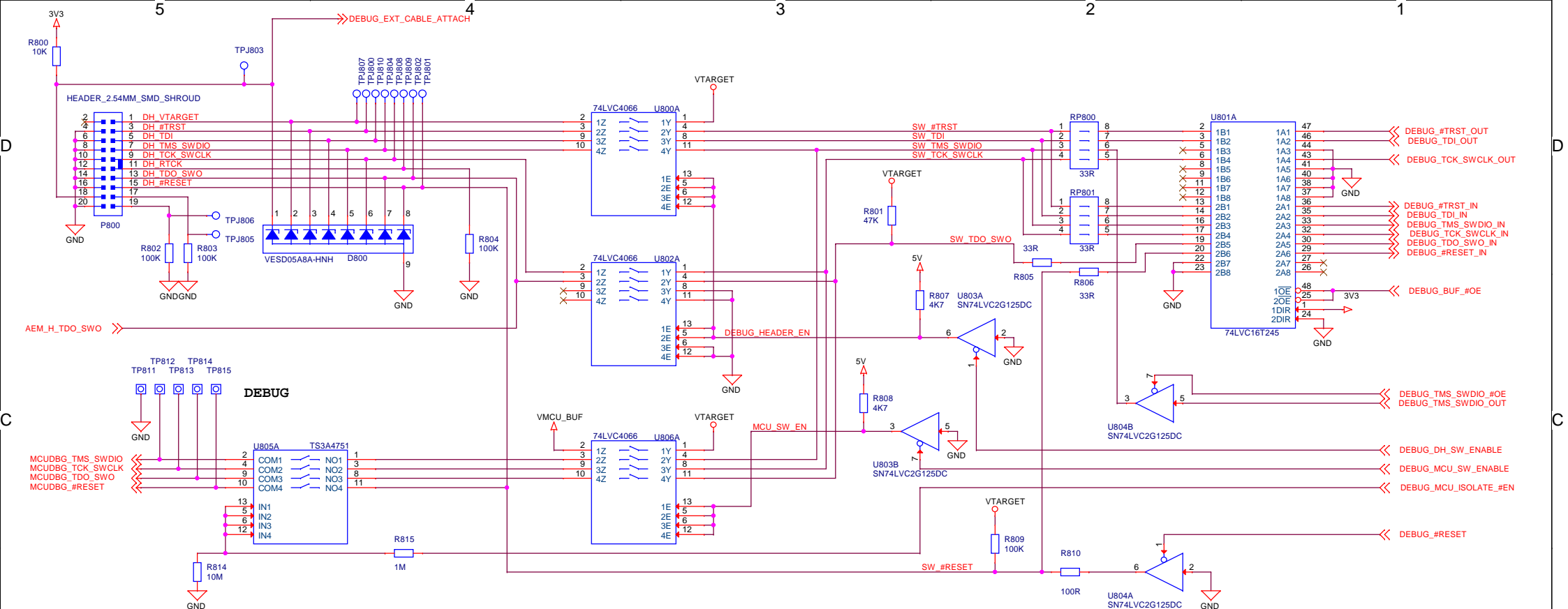
STK

GND

MCU power current sense

		Schematic Title			
		EFM32 Giant Gecko Starter Kit			
		Page Title			
Designed: DDB		Approved: JNO		Advanced Energy Monitor	
Size A3		BOM Doc No: <Cage Code>		Document number BRD2200A	
Design Created Date: Wednesday, December 03, 2008		Sheet Created Date Wednesday, August 19, 2009		Sheet Modified Date Friday, May 11, 2012	
				Revision A03	
				Sheet 8 of 10	





Mode						
Debug Out	0	1	0	0	External voltage	External voltage
MCU Debug	1	0	0	1	Disconnected	VMCU
Debug In	1	1	1	1	VMCU	VMCU
Debug Off	1	1	1	0	-	-

Schematic Title		Page Title	
EFM32 Giant Gecko Starter Kit		Debug Interface	
Document number		Revision	
BRD2200A		A03	
Sheet Created Date		Sheet Modified Date	
Saturday, March 21, 2009		Friday, May 11, 2012	
Sheet Created Date		Sheet Modified Date	
Wednesday, December 03, 2008		Friday, May 11, 2012	

